

# The smart UAV four axis aircraft

## Main character:

- Four-axis structure is applied to make the flying action more flexible, rapid. It has strong wind-resistant performance and can be used indoor or outdoor.
- Built-in Gyro stabilizer is equipped, which helps precise positioning
- Modular design structure is applied, simple assembly and convenient maintenance.
- It can make 360 degree 3D tumbling performance.

## Preface

Dear customers:  
Hello! Thank you for purchasing our aviation model. In order to help you understand how to operate our products more safely and quickly, please read carefully the instruction manual. Please also well keep the original of this instruction manual for future reference.

## Important notes:

1. This product is not a toy but one precise equipment which integrating many professional knowledge in the field of machinery, electronics, aerodynamics, high-frequency emission, etc. It requires correct installation and debugging so as to avoid accident from being happened. The owner of this product should operate and control it in a very safe way as incorrect operation may cause severe wound to the human body and loss of property. We won't be responsible for all as we can not monitor or control the user's operating behavior during the time of assembling, using or operating.
2. This product is suitable for people who have experience in operating the flying model or people who is more than 14 years old.
3. Once the product is sold, we won't take any responsibility for any safety responsibility in the respect of operating, controlling.

## Caution on safety:

This UAV aviation model is one high-dangerous commodity. Therefore, you need to keep it far away from people or crowd when flying. All these behaviors, such as incorrect installation or broken product or faulty electronic control equipment or not familiar with operating, may result in unforeseeable accident happened, such as causing damage to the product surrounded the people. Please pay attention to the flying safety during the time of operating. You are also required to know some accident and responsibility which may be caused by our own negligence.

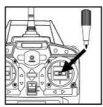
1. Keep it far away from the obstacle or people.
2. Keep it far away from the motion environment.
3. Keep it far away from rotating part and far away from the heat source.
4. Please follow the sequence of power ON and power OFF when switching on this product as incorrect sequence of power ON and power OFF may cause this product out of control, which may result in affecting your own safety or safety of others. Please form a good habit of correct switching on or switching off.
5. Please put it into the packing box when you do not use this aircraft. Propeller and transmitter should be put into the transparent box in level direction.

## Cautions:

1. The remote controlling distance may be affected when there is insufficient power with the transmitter or aircraft.
2. It may fly not enough height or having difficulty in taking off when there is insufficient power with the aircraft.
3. If there is any damage or distortion happened with the aircraft, please repair it in time. For severe phenomenon like rotor breakage or damage, please do not fly it. Otherwise it may cause injury.
4. If you do not use this product for a long time, please remove all the batteries in the transmitter in order to avoid battery leakage which may cause damaged to this product.
5. Please do not let this aircraft crash from the height or severe collision as these behaviors will damage the aircraft or reduce the using life of this product.

## Get to know your transmitter

### Load batteries in the transmitter

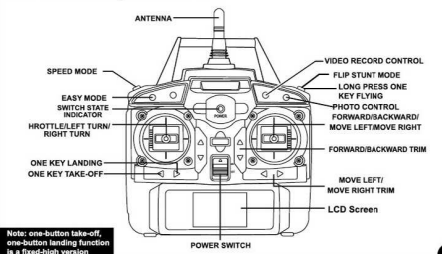


### Load batteries in the transmitter



Open the back cover at the back of the transmitter, please load 4 PCS AA alkaline batteries correctly as the correct polarity shown in the battery compartment (battery needs to buy separately)

## Introduction on the keys on the transmitter



Note: one-button take-off, one-button landing function is a fixed-high version

## Environment before flying

1. Fly indoor: Please select to fly in the spacious area where there is no obstacle or pet or people nearby.
2. Fly outdoor: Please select to fly under the weather of warm, sunny or non-windy or breeze.

Cautions: 1. Please do not fly under extreme weather as too hot or too cold weather will affect the flying effect or even damage the model.  
2. Please do not fly under the strong wind as strong wind may cause limited to your flying action or even hamper your flying control. In the case of flying under the strong wind, your helicopter will be blown away or damaged.

When the flight is not normal, such as flight instability, etc. The aircraft level standing on the ground, keep the plane and remote control in a state the frequency of success. At the same time using gyro self correction program for correction. The operation methods such as this example, the throttle and direction. At the same time, the lower left and lower right lever operation, and maintain the 3 seconds, until the The spacecraft's flashing lights, waiting for the light to restore a long bright, is the school is complete.

1. Push both Joy sticks (left & right) to lower right & left direction (0.5 sec), the drone's blades start rotating and ready to fly.
2. Push the joystick again (0.5 sec), if any emergencies, the drone will stop and land on the ground.

(Note: Fixed High specific function)

Push the throttle to the left or right. Control rods, aircraft will rotate to the left or to the right.

When the 3D mode at high speed/rotate

Push the control lever to the left or to the right, the aircraft will be flying to the left to the right accordingly

### Operating direction

This UAV aviation model is one high-dangerous commodity. Therefore, you need to keep it far away from people or crowd when flying. All these behaviors, such as incorrect installation or broken product or faulty electronic control equipment or not familiar with operating, may result in unforeseeable accident happened, such as causing damage to the product surrounded the people. Please pay attention to the flying safety during the time of operating. You are also required to know some accident and responsibility which may be caused by our own negligence.

Push the throttle lever upward or downward, the aircraft will fly upward or downward correspondingly

Push the direction control lever upward or downward, the aircraft will be flying forward or backward.

### Trimming

In the case that the aircraft is hovering in the air and the aircraft tilt by forward or backward, this time you can correct it by pushing the trimmer upward or downward.

In the case that the aircraft is hovering in the air and the aircraft tilt by to the left or to the right, you can correct it by pushing the trimmer to the right or to the left.

## Flying practice

On-site rotating (direction rotation)

After enough practice, you can try to practice flying as below.

Complete one flying action of "cross" shape.

Fly in a "square" shape.

You can practice some basic actions like on-site taking off, landing, rotating and then try to practice flying into "square" shape "cross" shape.

Make landing on the assigned place (on-site landing)

Note: the aircraft equipped with a camera / camera (camera is required)

## Fixed high model (unique function)

Enter a key take-off mode, then the aircraft will automatically take off, and stabilized at 1.5 meters altitude, up to push the accelerator aircraft up, down Push the vehicle down, the throttle return to the middle position of the aircraft automatically stability. In a key landing mode, the aircraft will slow down automatically. Automatically landed on the ground, the stop stopped turning

One key take off 1.5m One key land

Long press a button to take off Long press a key to land

### A key to return

Enter a key return mode, the remote controller sends a drop of sound, the aircraft began to return.

## Instruction on 3D tumbling action

When you are familiar with all these basic actions, you can play some amazing tumbling action. First of all, fly the four-axis UAV to 3 meters' height, then keep pressing the Stunt Key on the right up corner of the transmitter. Then push the right direction rudder (in any direction) to make tumbling action like forward tumbling, backward tumbling, left-tumbling, right-tumbling.

3 meters

During the process of playing this aircraft or during the course of tumbling, if the aircraft is fallen on the ground, please do not operate the control lever immediately but just wait for 5-10 seconds and the gyro will restore back to the original position automatically.

## Aerial photo / video function:

1. Method is: ①The aerial camera line into the specified socket ②Turn on the power, the camera lights turn green after. Enter the normal working state, when the red light has been shining, green light Do not light, said there is no access to the memory card (SD card).

2. Camera function: when the camera is in the normal working state, press the button, the indicator light flashes, take pictures to complete. Video function: when the camera is in the normal working state, press down, and the indicator light is on, that is the video, and then click, that the end of the video.

Camera

Photo

Can buy

## Cautions on how to use the lithium battery

1. There is certain risk existing when using the lithium battery as it may cause wounded to your body or cause substantial loss to your property. Please note that the user should take all the responsibility by its own. Manufacturer and sales agent won't take any responsibility on the body injury or property loss as we can not monitor or control the user's behavior during the process of using the battery (for example, charging, discharging or storage of the battery, etc.)
2. If there is any battery leakage happened, please try to avoid the leakage fluid being contacted with the skin or eyes. In case that it has reached the skin, please rinse it with soap and clear water. In the case it has reached the eyes, please rinse it with massive cold water and go to see the doctor immediately.
3. If the charger appears suspicious smell, noise or smoke, please unplug it from the power socket immediately.
4. Please strictly follow the following requirement, otherwise it may cause fire disaster, electric shock or explosion.

### Charging

1. Original special-supposed charger should be required when charging the battery. Damaged charger or any other chargers are highly forbidden to be used.
2. Please do not charge the batteries that is swollen, leakage or damaged.
3. Please do not overcharge the battery. When batteries are fully charged, please unplug the charger and finish charging and 4. Please do not charge on the flammable or combustible surface (such as carpet, wooden floor, solid wooden furniture, etc) or on the electric-conductive surface. You are required to watch carefully the battery and the surface where you need to charge. please do not recharge this battery so as to avoid overheating.
5. Please do not charge immediately when the product is just finished using or the battery is still hot enough.
6. The charging temperature of the battery should be between 0-40 Celsius degree.

## Usage and storage

1. Wrapping the broken or damaged battery by plastic is highly forbidden.
2. When starting this equipment, please do not touch or remove the battery.
3. Please do not overexpose the battery and avoid excessive physical collision.
4. Using the battery that is swollen, leakage, broken or even sending out smell is highly forbidden.
5. Children are forbidden to touch the battery.
6. Please do not throw the battery into the fire. Try to avoid the battery being contacted with the liquid. This equipment is forbidden to be put in the rain. Nor does it to be placed in the moisture area. Please do not put the battery into the microwave or pressure tank.
7. Please do not disassemble, drill or transform or cut the battery as the battery or charger can not sustain the heavy object. Striking the battery is highly forbidden.
8. Please do not use any solvents, industrial-purposed alcohol or any other flammable solvents to clean the battery.
9. In order to prevent from being short-circuited, please avoid being contacted by the electrolyte substance in the charger. electrolyte substance and electrolyte steam does great harm to the human body.
10. Please store this equipment under the normal room temperature. Please do not put this equipment under extreme temperature. Try to avoid storing it on the place where temperature has substantial change.
11. Please do not place this product near the heat source.
12. Please remove the batteries if you do not use it.
13. Please be familiar with the method that the local trash is centralized and disposed.

### Recycle

1. Please do not treat this equipment as the daily trash. Battery that is damaged or can not be used should be put into the special-purpose container.

2. This equipment is composed of electronic component and battery. Regarding the electronic trash, please dispose in accordance with special regulation.

3. Please be familiar with the way the local trash is centralized and disposed.

### Battery Repair & Maintenance

1. Battery should be placed in the dried and ventilated place; The temperature for storing should be about 18-25 Celsius degree.
2. In order to improve the using life of the battery, please avoid charging it times and times again or excessive discharge.
3. If you need to store it for a long time, please conduct maintenance by charging the battery before storing, that is to say, charge it till 50%-60% of the total electric volume and then store it.
4. If you do not use it for over 1 month, it is highly recommended that you can check periodically the voltage of the battery every month so as to make sure the battery voltage no less than 3V. Otherwise, please deal with it as per the point (3).

### Battery charging

Charging to the batteries in the aircraft

Remove the USB charging wire, please connect the 2-pin charging socket with the charging port of the aircraft, the USB port of the charging wire should be inserted into the USB port of the computer (or USB power adaptor) to conduct charging to the battery. When charging, the red indicator of the USB wire will be ON. When it is fully charged, the red indicator will be OFF.

Note: 1. when using the computer for charging, please unplug the charging wire before shutting down the computer.  
2. Please pay attention to the battery polarity when connecting the USB wire with the battery.

### Charging time

300mA.H: Charge time 40-50 minutes  
400mA.H: Charge time 60-70 minutes  
600mA.H: Charge time 100-110 minutes  
750mA.H: Charge time 120-130 minutes

OR

Note: Charging time is for reference only, with charge head and Voltage-related

## Maintenance program

Problem	Reason	Solution
There is no reaction with the aircraft.	1. Decoding is not succeeded. 2. Insufficient power with the aircraft or transmitter.	1. Re-decoding, first of all, please switch on the transmitter and then contact the power of the aircraft and then place it on the level ground. Finally push the throttle lever of the transmitter to the highest and then pull it back to the original place. 2. Replace the power of the transmitter or charge the aircraft.
Not smart reaction with the aircraft or no signal.	1. Insufficient power with the transmitter. 2. Antenna of the aircraft is broken.	1. Replace with new battery in the transmitter. 2. Wire needs to be re-welded.
The aircraft can not make hovering or the aircraft keep side-flying to one side.	1. The aircraft is not placed to the level ground when decoding. 2. The trimming key on the transmitter is not reset. 3. Some blade may be damaged.	1. Re-decoding. 2. Reset the trimmer on the transmitter, trim the reset function. 3. Replace the blade.
It can not be reset.	Trimming can not reset to the original state.	Stop putting the aircraft on the level position. Press two reset keys in the same time for 2 seconds and then re-work.

Warning: Changes or modifications to this unit not expressly approved by the party responsible for compliance could void the user's authority to operate the equipment.  
NOTE: This equipment has been tested and found to comply with the limits for Class B digital device, pursuant to Part 15 of the FCC Rules. These limits are designed to provide reasonable protection against harmful interference in a residential installation. This equipment generates, uses and can radiate radio frequency energy and, if not installed and used in accordance with the instructions, may cause harmful interference to radio communications. However, there is no guarantee that interference will not occur in a particular installation. If this equipment does cause harmful interference to radio or television reception, which can be determined by turning the equipment off and on, the user is encouraged to try to correct the interference by one or more of the following measures:

- Reorient or relocate the receiving antenna.
  - Increase the separation between the equipment and receiver.
  - Connect the equipment into an outlet on a circuit different from that to which the receiver is connected.
  - Consult the dealer or an experienced radio/TV technician for help.
- The device must not be co-located or operating in conjunction with any other antenna or transmitter