

Test Plot 1#: GSM 850_Head Left Cheek_Middle

DUT: 2G GSM bar phone; Type: Jeimy; Serial: 19102500105;

Communication System: UID 0, Generic GSM (0); Frequency: 836.6 MHz; Duty Cycle: 1:8

Medium parameters used (interpolated): $f = 836.6 \text{ MHz}$; $\sigma = 0.875 \text{ S/m}$; $\epsilon_r = 42.089$; $\rho = 1000 \text{ kg/m}^3$

Phantom section: Left Section

DASY5 Configuration:

- Probe: EX3DV4 - SN7522; ConvF(9.46, 9.46, 9.46) @ 836.6 MHz;
- Sensor-Surface: 4mm (Mechanical Surface Detection)
- Electronics: DAE4 Sn1562; Calibrated: 11/6/2018
- Phantom: SAM-Twin V8.0 P1aP2a; Type: QD 000 P41 AA ; Serial: 1962
- Measurement SW: DASY52, Version 52.10 (2);

Head Left Cheek/GSM 850 Mid/Area Scan (71x91x1): Interpolated grid: $dx=1.500 \text{ mm}$, $dy=1.500 \text{ mm}$

Maximum value of SAR (interpolated) = 0.437 W/kg

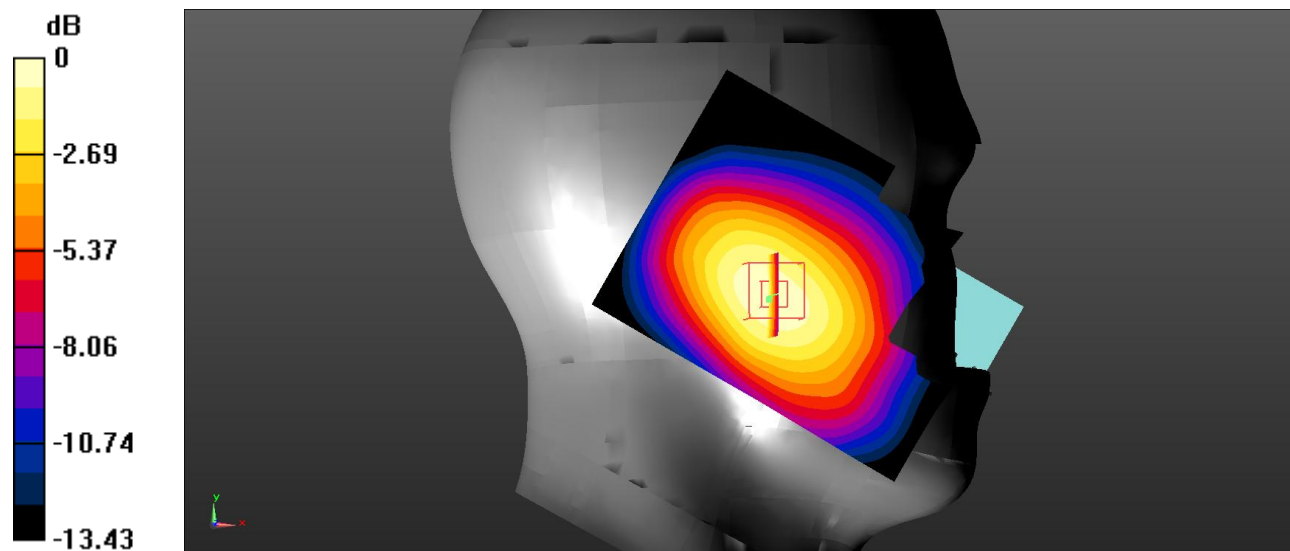
Head Left Cheek/GSM 850 Mid/Zoom Scan (5x5x7)/Cube 0: Measurement grid: $dx=8\text{mm}$, $dy=8\text{mm}$, $dz=5\text{mm}$

Reference Value = 10.03 V/m; Power Drift = 0.21 dB

Peak SAR (extrapolated) = 0.558 W/kg

SAR(1 g) = 0.430 W/kg; SAR(10 g) = 0.306 W/kg (SAR corrected for target medium)

Maximum value of SAR (measured) = 0.451 W/kg



0 dB = 0.451 W/kg = -3.46 dBW/kg

Test Plot 2#: GSM 850_Head Left Tilt_Middle

DUT: 2G GSM bar phone; Type: Jeimy; Serial: 19102500105;

Communication System: UID 0, Generic GSM (0); Frequency: 836.6 MHz; Duty Cycle: 1:8

Medium parameters used (interpolated): $f = 836.6 \text{ MHz}$; $\sigma = 0.875 \text{ S/m}$; $\epsilon_r = 42.089$; $\rho = 1000 \text{ kg/m}^3$

Phantom section: Left Section

DASY5 Configuration:

- Probe: EX3DV4 - SN7522; ConvF(9.46, 9.46, 9.46) @ 836.6 MHz;
- Sensor-Surface: 4mm (Mechanical Surface Detection)
- Electronics: DAE4 Sn1562; Calibrated: 11/6/2018
- Phantom: SAM-Twin V8.0 P1aP2a; Type: QD 000 P41 AA ; Serial: 1962
- Measurement SW: DASY52, Version 52.10 (2);

Head Left Tilt/GSM 850 Mid/Area Scan (71x91x1): Interpolated grid: $dx=1.500 \text{ mm}$, $dy=1.500 \text{ mm}$

Maximum value of SAR (interpolated) = 0.165 W/kg

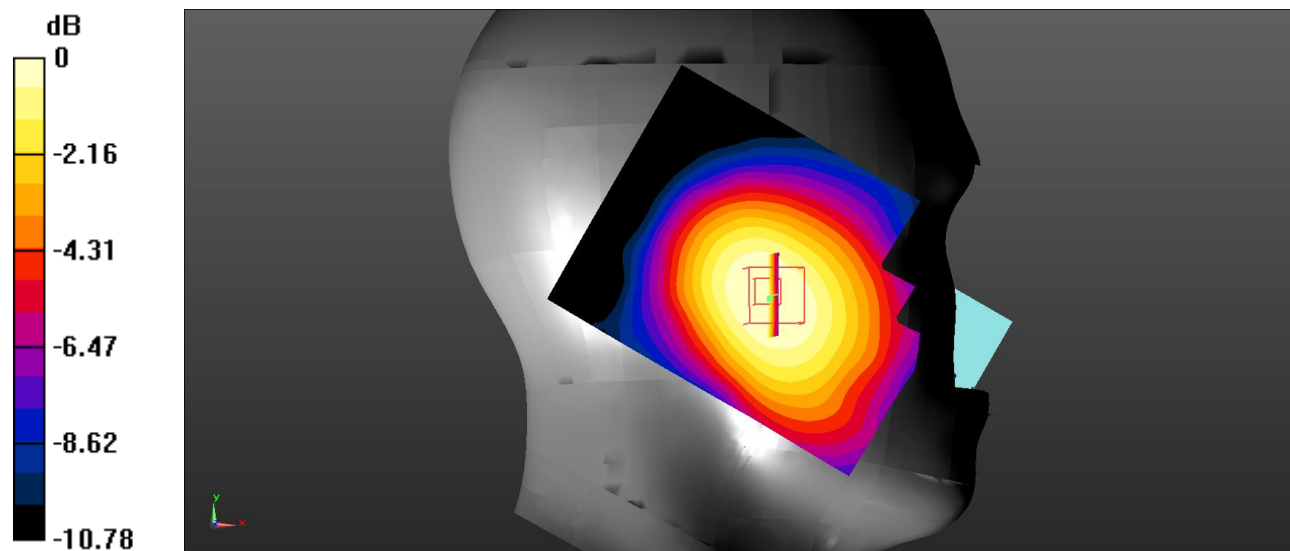
Head Left Tilt/GSM 850 Mid/Zoom Scan (5x5x7)/Cube 0: Measurement grid: $dx=8\text{mm}$, $dy=8\text{mm}$, $dz=5\text{mm}$

Reference Value = 6.654 V/m; Power Drift = 0.15 dB

Peak SAR (extrapolated) = 0.195 W/kg

SAR(1 g) = 0.148 W/kg; SAR(10 g) = 0.109 W/kg (SAR corrected for target medium)

Maximum value of SAR (measured) = 0.154 W/kg



0 dB = 0.154 W/kg = -8.12 dBW/kg

Test Plot 3#: GSM 850_Head Right Cheek_Middle

DUT: 2G GSM bar phone; Type: Jeimy; Serial: 19102500105;

Communication System: UID 0, Generic GSM (0); Frequency: 836.6 MHz;Duty Cycle: 1:8

Medium parameters used (interpolated): $f = 836.6 \text{ MHz}$; $\sigma = 0.875 \text{ S/m}$; $\epsilon_r = 42.089$; $\rho = 1000 \text{ kg/m}^3$

Phantom section: Right Section

DASY5 Configuration:

- Probe: EX3DV4 - SN7522; ConvF(9.46, 9.46, 9.46) @ 836.6 MHz;
- Sensor-Surface: 4mm (Mechanical Surface Detection)
- Electronics: DAE4 Sn1562; Calibrated: 11/6/2018
- Phantom: SAM-Twin V8.0 P1aP2a; Type: QD 000 P41 AA ; Serial: 1962
- Measurement SW: DASY52, Version 52.10 (2);

Head Right Cheek/GSM 850 Mid/Area Scan (71x91x1): Interpolated grid: $dx=1.500 \text{ mm}$, $dy=1.500 \text{ mm}$

Maximum value of SAR (interpolated) = 0.516 W/kg

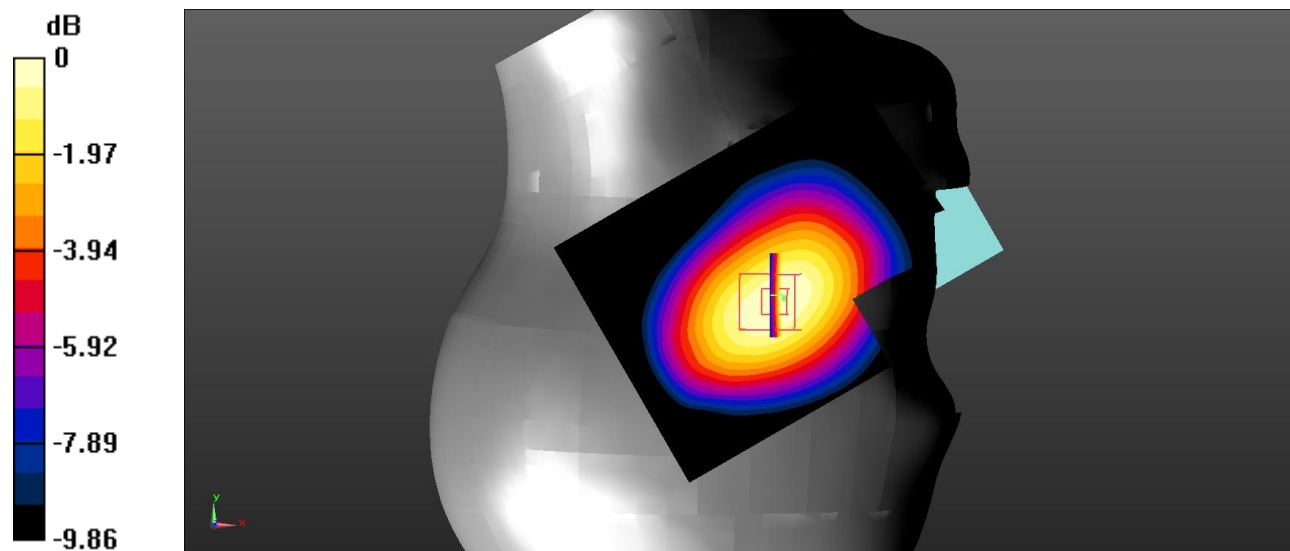
Head Right Cheek/GSM 850 Mid/Zoom Scan (5x5x7)/Cube 0: Measurement grid: $dx=8\text{mm}$, $dy=8\text{mm}$, $dz=5\text{mm}$

Reference Value = 10.66 V/m; Power Drift = -0.21 dB

Peak SAR (extrapolated) = 0.637 W/kg

SAR(1 g) = 0.485 W/kg; SAR(10 g) = 0.341 W/kg (SAR corrected for target medium)

Maximum value of SAR (measured) = 0.510 W/kg



0 dB = 0.510 W/kg = -2.92 dBW/kg

Test Plot 4#: GSM 850_Head Right Tilt_Middle

DUT: 2G GSM bar phone; Type: Jeimy; Serial: 19102500105;

Communication System: UID 0, Generic GSM (0); Frequency: 836.6 MHz; Duty Cycle: 1:8

Medium parameters used (interpolated): $f = 836.6 \text{ MHz}$; $\sigma = 0.875 \text{ S/m}$; $\epsilon_r = 42.089$; $\rho = 1000 \text{ kg/m}^3$

Phantom section: Right Section

DASY5 Configuration:

- Probe: EX3DV4 - SN7522; ConvF(9.46, 9.46, 9.46) @ 836.6 MHz;
- Sensor-Surface: 4mm (Mechanical Surface Detection)
- Electronics: DAE4 Sn1562; Calibrated: 11/6/2018
- Phantom: SAM-Twin V8.0 P1aP2a; Type: QD 000 P41 AA ; Serial: 1962
- Measurement SW: DASY52, Version 52.10 (2);

Head Right Tilt/GSM 850 Mid/Area Scan (71x91x1): Interpolated grid: $dx=1.500 \text{ mm}$, $dy=1.500 \text{ mm}$

Maximum value of SAR (interpolated) = 0.189 W/kg

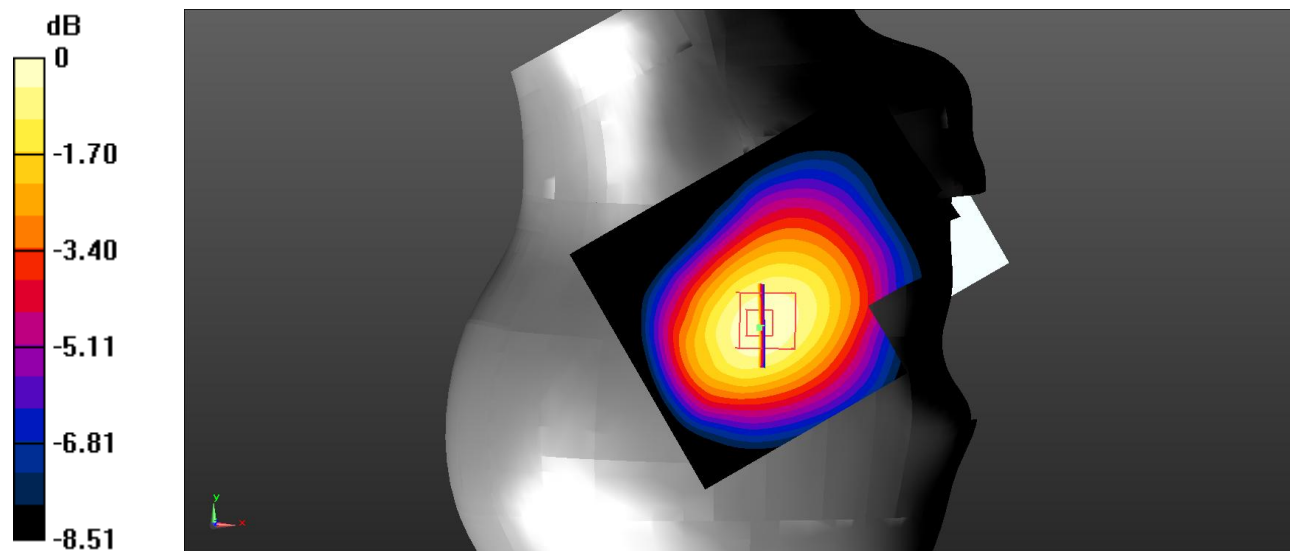
Head Right Tilt/GSM 850 Mid/Zoom Scan (5x5x7)/Cube 0: Measurement grid: $dx=8\text{mm}$, $dy=8\text{mm}$, $dz=5\text{mm}$

Reference Value = 9.116 V/m; Power Drift = 0.04 dB

Peak SAR (extrapolated) = 0.235 W/kg

SAR(1 g) = 0.180 W/kg; SAR(10 g) = 0.132 W/kg (SAR corrected for target medium)

Maximum value of SAR (measured) = 0.190 W/kg



0 dB = 0.190 W/kg = -7.21 dBW/kg

Test Plot 5#: GSM 850_Body Worn Back_Middle

DUT: 2G GSM bar phone; Type: Jeimy; Serial: 19102500105;

Communication System: UID 0, Generic GSM (0); Frequency: 836.6 MHz; Duty Cycle: 1:8

Medium parameters used (interpolated): $f = 836.6$ MHz; $\sigma = 0.875$ S/m; $\epsilon_r = 42.089$; $\rho = 1000$ kg/m³

Phantom section: Flat Section

DASY5 Configuration:

- Probe: EX3DV4 - SN7522; ConvF(9.46, 9.46, 9.46) @ 836.6 MHz;
- Sensor-Surface: 4mm (Mechanical Surface Detection)
- Electronics: DAE4 Sn1562; Calibrated: 11/6/2018
- Phantom: SAM-Twin V8.0 P1aP2a; Type: QD 000 P41 AA ; Serial: 1962
- Measurement SW: DASY52, Version 52.10 (2);

Body Worn Back/GSM 850 Mid/Area Scan (71x91x1): Interpolated grid: dx=1.500 mm, dy=1.500 mm

Maximum value of SAR (interpolated) = 0.654 W/kg

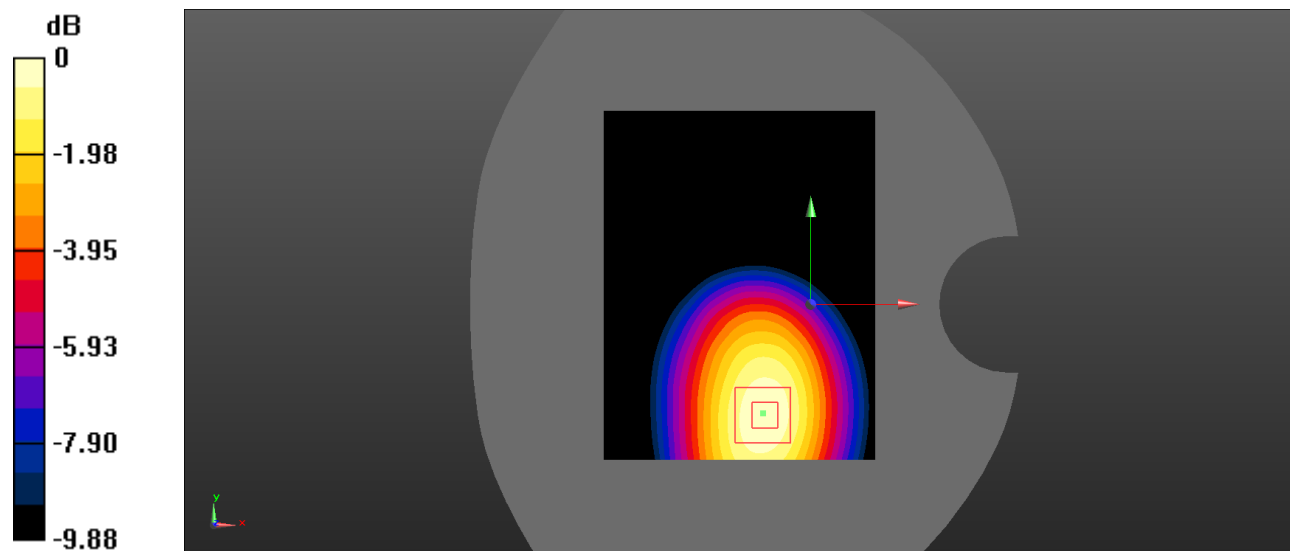
Body Worn Back/GSM 850 Mid/Zoom Scan (5x5x7)/Cube 0: Measurement grid: dx=8mm, dy=8mm, dz=5mm

Reference Value = 16.20 V/m; Power Drift = -0.03 dB

Peak SAR (extrapolated) = 0.876 W/kg

SAR(1 g) = 0.641 W/kg; SAR(10 g) = 0.442 W/kg (SAR corrected for target medium)

Maximum value of SAR (measured) = 0.673 W/kg



0 dB = 0.673 W/kg = -1.72 dBW/kg

Test Plot 6#: GSM 850_Body Back_Middle

DUT: 2G GSM bar phone; Type: Jeimy; Serial: 19102500105;

Communication System: UID 0, Generic GPRS-2 slots (0); Frequency: 836.6 MHz; Duty Cycle: 1:4
 Medium parameters used (interpolated): $f = 836.6 \text{ MHz}$; $\sigma = 0.875 \text{ S/m}$; $\epsilon_r = 42.089$; $\rho = 1000 \text{ kg/m}^3$
 Phantom section: Flat Section

DASY5 Configuration:

- Probe: EX3DV4 - SN7522; ConvF(9.46, 9.46, 9.46) @ 836.6 MHz;
- Sensor-Surface: 4mm (Mechanical Surface Detection)
- Electronics: DAE4 Sn1562; Calibrated: 11/6/2018
- Phantom: SAM-Twin V8.0 P1aP2a; Type: QD 000 P41 AA ; Serial: 1962
- Measurement SW: DASY52, Version 52.10 (2);

Body Back/GSM 850 Mid/Area Scan (71x91x1): Interpolated grid: $dx=1.500 \text{ mm}$, $dy=1.500 \text{ mm}$

Maximum value of SAR (interpolated) = 0.588 W/kg

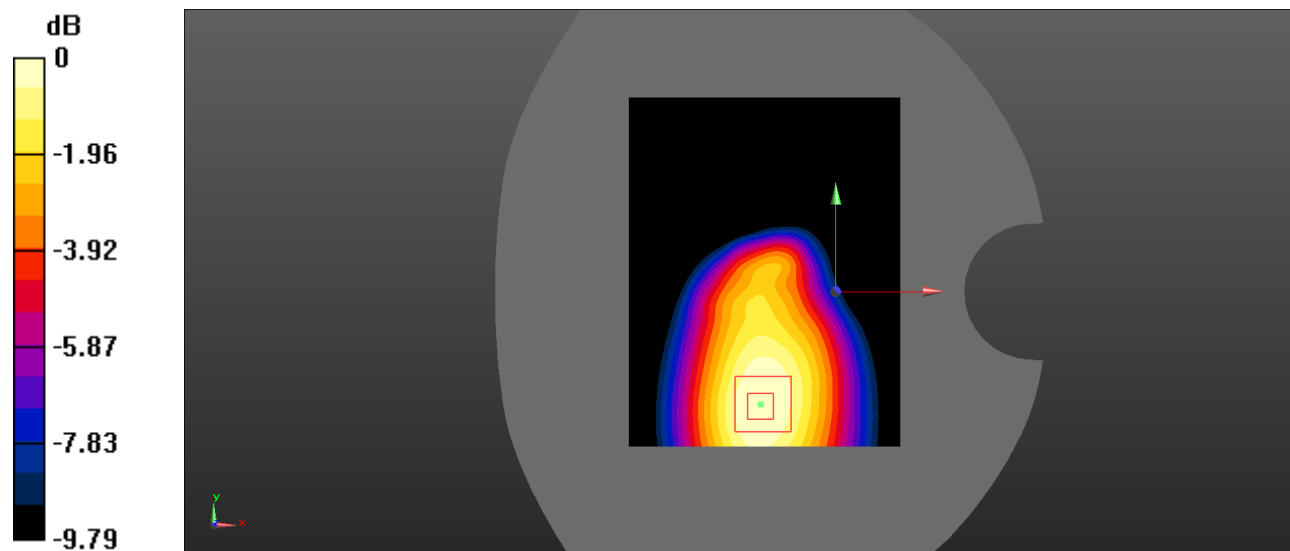
Body Back/GSM 850 Mid/Zoom Scan (5x5x7)/Cube 0: Measurement grid: $dx=8\text{mm}$, $dy=8\text{mm}$, $dz=5\text{mm}$

Reference Value = 20.03 V/m; Power Drift = -0.11 dB

Peak SAR (extrapolated) = 0.735 W/kg

SAR(1 g) = 0.536 W/kg; SAR(10 g) = 0.369 W/kg (SAR corrected for target medium)

Maximum value of SAR (measured) = 0.566 W/kg



0 dB = 0.566 W/kg = -2.47 dBW/kg

Test Plot 7#: PCS 1900_Head Left Cheek_Middle

DUT: 2G GSM bar phone; Type: Jeimy; Serial: 19102500105;

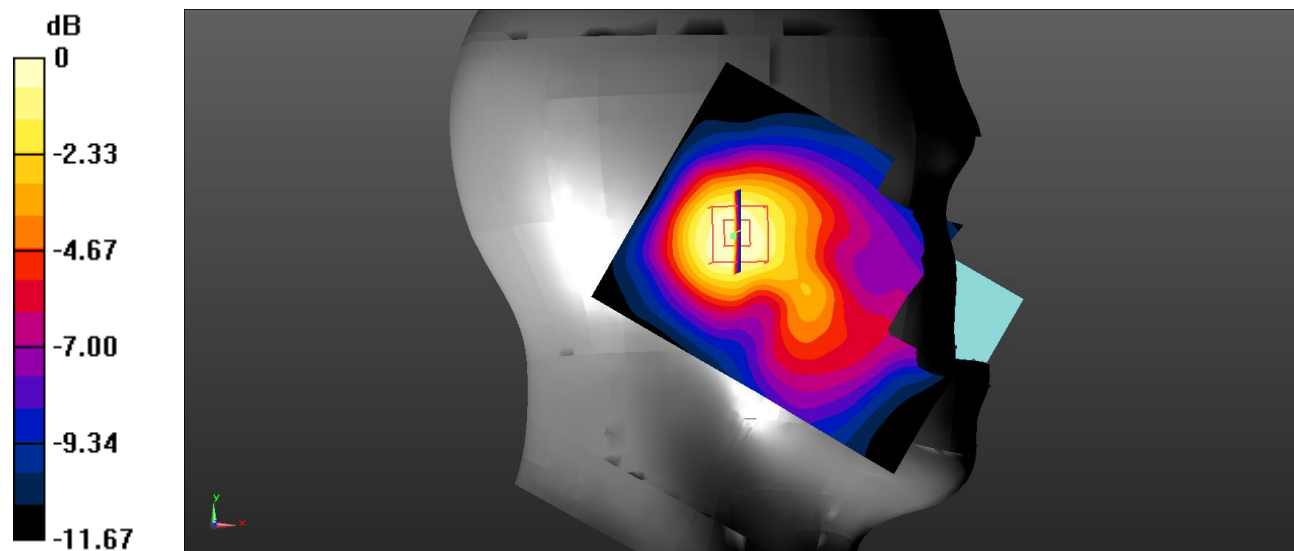
Communication System: UID 0, Generic GSM (0); Frequency: 1880 MHz;Duty Cycle: 1:8
 Medium parameters used (interpolated): f = 1880 MHz; $\sigma = 1.374$ S/m; $\epsilon_r = 40.987$; $\rho = 1000$ kg/m³
 Phantom section: Left Section

DASY5 Configuration:

- Probe: EX3DV4 - SN7522; ConvF(7.91, 7.91, 7.91) @ 1880 MHz;
- Sensor-Surface: 4mm (Mechanical Surface Detection)
- Electronics: DAE4 Sn1562; Calibrated: 11/6/2018
- Phantom: SAM-Twin V8.0 P1aP2a; Type: QD 000 P41 AA ; Serial: 1962
- Measurement SW: DASY52, Version 52.10 (2);

Head Left Cheek/GSM 1900 Mid/Area Scan (71x91x1): Interpolated grid: dx=1.500 mm, dy=1.500 mm
 Maximum value of SAR (interpolated) = 0.269 W/kg

Head Left Cheek/GSM 1900 Mid/Zoom Scan (5x5x7)/Cube 0: Measurement grid: dx=8mm, dy=8mm, dz=5mm
 Reference Value = 6.199 V/m; Power Drift = 0.10 dB
 Peak SAR (extrapolated) = 0.340 W/kg
SAR(1 g) = 0.229 W/kg; SAR(10 g) = 0.145 W/kg (SAR corrected for target medium)
 Maximum value of SAR (measured) = 0.247 W/kg



0 dB = 0.247 W/kg = -6.07 dBW/kg

Test Plot 8#: PCS 1900_ Head Left Tilt_Middle

DUT: 2G GSM bar phone; Type: Jeimy; Serial: 19102500105;

Communication System: UID 0, Generic GSM (0); Frequency: 1880 MHz;Duty Cycle: 1:8
 Medium parameters used (interpolated): $f = 1880$ MHz; $\sigma = 1.374$ S/m; $\epsilon_r = 40.987$; $\rho = 1000$ kg/m³
 Phantom section: Left Section

DASY5 Configuration:

- Probe: EX3DV4 - SN7522; ConvF(7.91, 7.91, 7.91) @ 1880 MHz;
- Sensor-Surface: 4mm (Mechanical Surface Detection)
- Electronics: DAE4 Sn1562; Calibrated: 11/6/2018
- Phantom: SAM-Twin V8.0 P1aP2a; Type: QD 000 P41 AA ; Serial: 1962
- Measurement SW: DASY52, Version 52.10 (2);

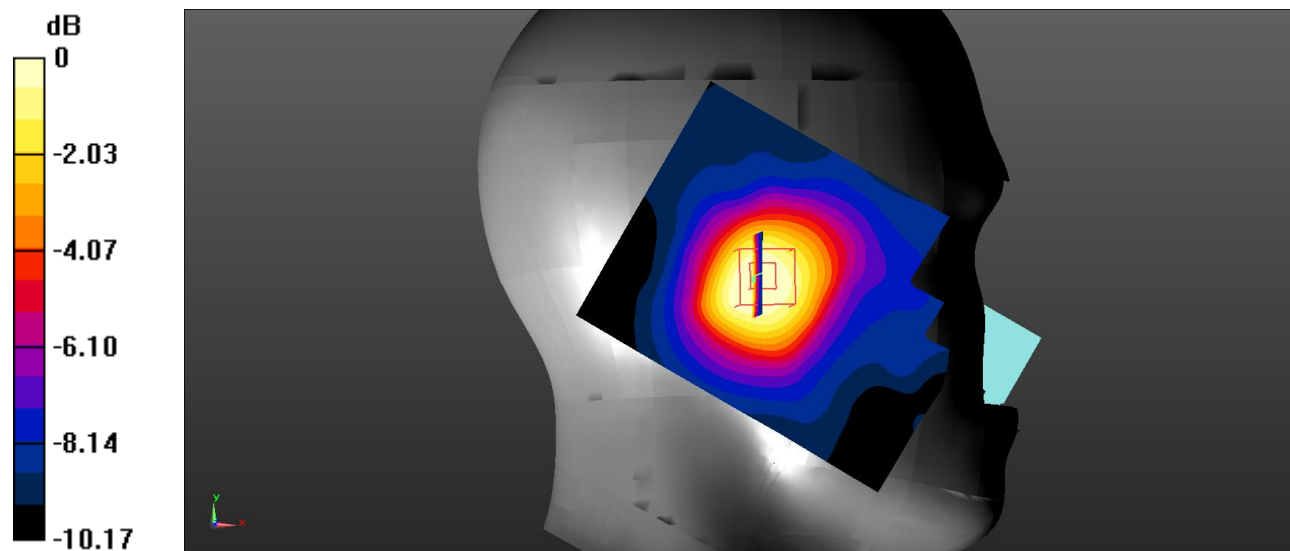
Head Left Tilt/GSM 1900 Mid/Area Scan (71x91x1): Interpolated grid: dx=1.500 mm, dy=1.500 mm
 Maximum value of SAR (interpolated) = 0.178 W/kg

Head Left Tilt/GSM 1900 Mid/Zoom Scan (5x5x7)/Cube 0: Measurement grid: dx=8mm, dy=8mm, dz=5mm
 Reference Value = 5.440 V/m; Power Drift = 0.16 dB

Peak SAR (extrapolated) = 0.231 W/kg

SAR(1 g) = 0.155 W/kg; SAR(10 g) = 0.099 W/kg (SAR corrected for target medium)

Maximum value of SAR (measured) = 0.164 W/kg



0 dB = 0.164 W/kg = -7.85 dBW/kg

Test Plot 9#: PCS 1900_Head Right Cheek_Middle

DUT: 2G GSM bar phone; Type: Jeimy; Serial: 19102500105;

Communication System: UID 0, Generic GSM (0); Frequency: 1880 MHz; Duty Cycle: 1:8

Medium parameters used (interpolated): $f = 1880$ MHz; $\sigma = 1.374$ S/m; $\epsilon_r = 40.987$; $\rho = 1000$ kg/m³

Phantom section: Right Section

DASY5 Configuration:

- Probe: EX3DV4 - SN7522; ConvF(7.91, 7.91, 7.91) @ 1880 MHz;
- Sensor-Surface: 4mm (Mechanical Surface Detection)
- Electronics: DAE4 Sn1562; Calibrated: 11/6/2018
- Phantom: SAM-Twin V8.0 P1aP2a; Type: QD 000 P41 AA ; Serial: 1962
- Measurement SW: DASY52, Version 52.10 (2);

Head Right Cheek/GSM 1900 Mid/Area Scan (71x91x1): Interpolated grid: dx=1.500 mm, dy=1.500 mm

Maximum value of SAR (interpolated) = 0.323 W/kg

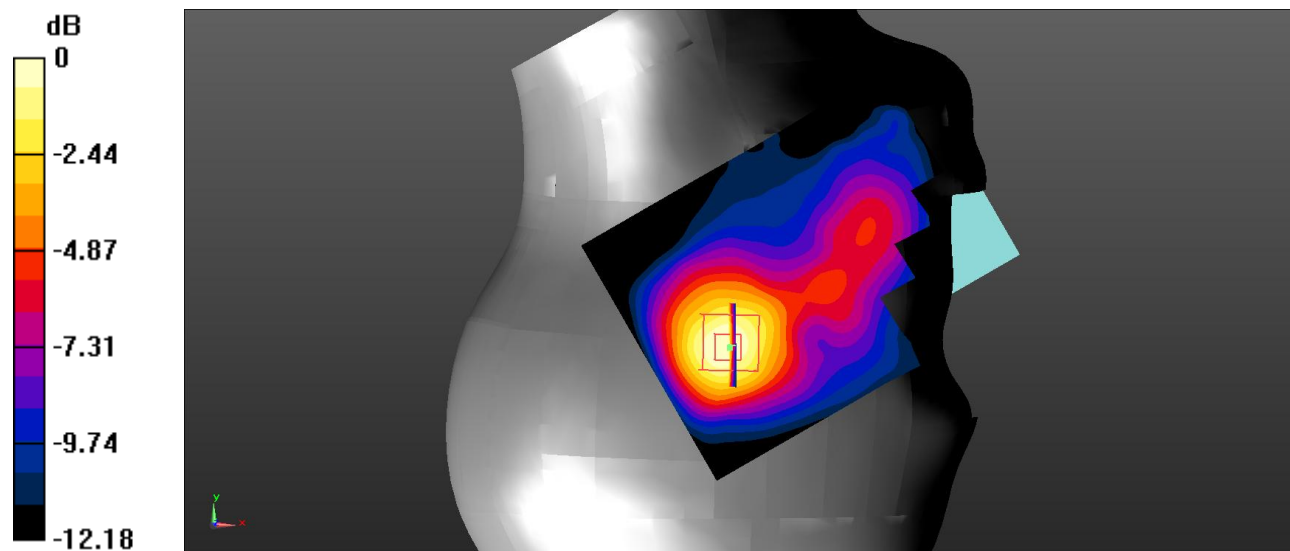
Head Right Cheek/GSM 1900 Mid/Zoom Scan (5x5x7)/Cube 0: Measurement grid: dx=8mm, dy=8mm, dz=5mm

Reference Value = 9.516 V/m; Power Drift = 0.15 dB

Peak SAR (extrapolated) = 0.482 W/kg

SAR(1 g) = 0.310 W/kg; SAR(10 g) = 0.188 W/kg (SAR corrected for target medium)

Maximum value of SAR (measured) = 0.337 W/kg



0 dB = 0.337 W/kg = -4.72 dBW/kg

Test Plot 10#: PCS 1900_ Head Right Tilt_Middle

DUT: 2G GSM bar phone; Type: Jeimy; Serial: 19102500105;

Communication System: UID 0, Generic GSM (0); Frequency: 1880 MHz; Duty Cycle: 1:8
 Medium parameters used (interpolated): $f = 1880 \text{ MHz}$; $\sigma = 1.374 \text{ S/m}$; $\epsilon_r = 40.987$; $\rho = 1000 \text{ kg/m}^3$
 Phantom section: Right Section

DASY5 Configuration:

- Probe: EX3DV4 - SN7522; ConvF(7.91, 7.91, 7.91) @ 1880 MHz;
- Sensor-Surface: 4mm (Mechanical Surface Detection)
- Electronics: DAE4 Sn1562; Calibrated: 11/6/2018
- Phantom: SAM-Twin V8.0 P1aP2a; Type: QD 000 P41 AA ; Serial: 1962
- Measurement SW: DASY52, Version 52.10 (2);

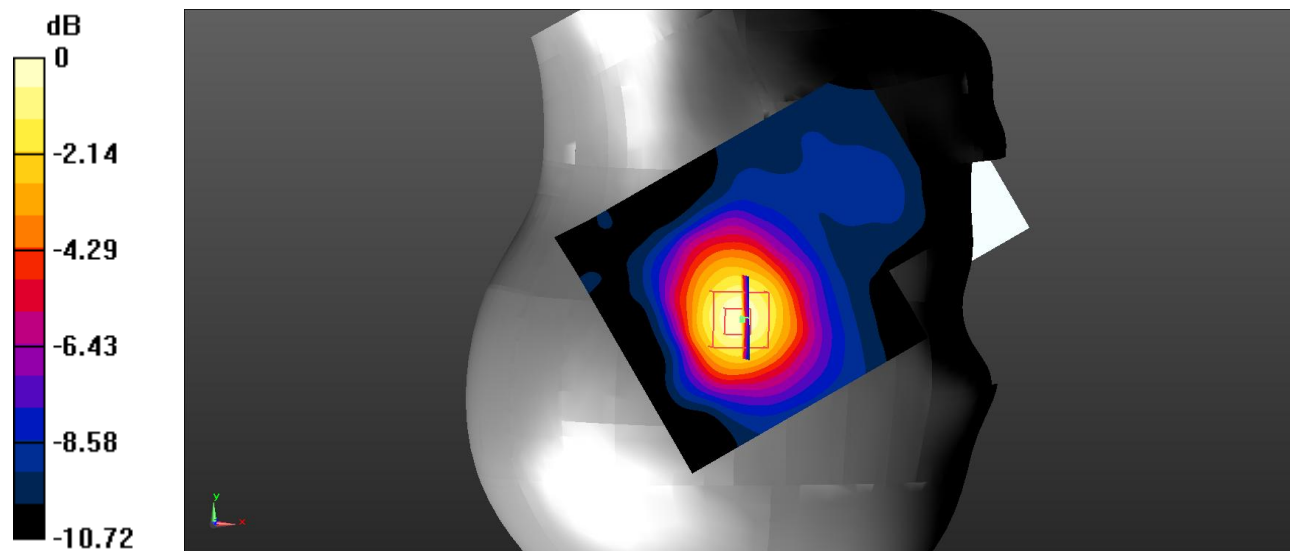
Head Right Tilt/GSM 1900 Mid/Area Scan (71x91x1): Interpolated grid: $dx=1.500 \text{ mm}$, $dy=1.500 \text{ mm}$
 Maximum value of SAR (interpolated) = 0.195 W/kg

Head Right Tilt/GSM 1900 Mid/Zoom Scan (5x5x7)/Cube 0: Measurement grid: $dx=8\text{mm}$, $dy=8\text{mm}$, $dz=5\text{mm}$
 Reference Value = 9.175 V/m ; Power Drift = 0.13 dB

Peak SAR (extrapolated) = 0.296 W/kg

SAR(1 g) = 0.196 W/kg; SAR(10 g) = 0.124 W/kg (SAR corrected for target medium)

Maximum value of SAR (measured) = 0.209 W/kg



0 dB = $0.209 \text{ W/kg} = -6.80 \text{ dBW/kg}$

Test Plot 11#: PCS 1900_ Body Worn Back _Middle

DUT: 2G GSM bar phone; Type: Jeimy; Serial: 19102500105;

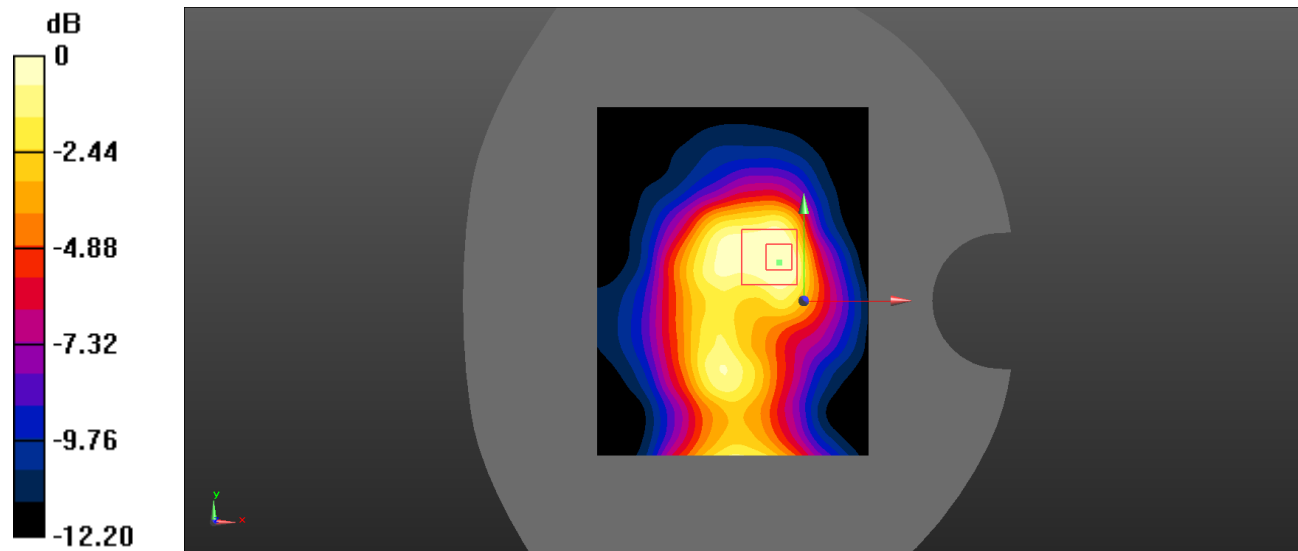
Communication System: UID 0, Generic GSM (0); Frequency: 1880 MHz; Duty Cycle: 1:8
 Medium parameters used (interpolated): $f = 1880 \text{ MHz}$; $\sigma = 1.374 \text{ S/m}$; $\epsilon_r = 40.987$; $\rho = 1000 \text{ kg/m}^3$
 Phantom section: Flat Section

DASY5 Configuration:

- Probe: EX3DV4 - SN7522; ConvF(7.91, 7.91, 7.91) @ 1880 MHz;
- Sensor-Surface: 4mm (Mechanical Surface Detection)
- Electronics: DAE4 Sn1562; Calibrated: 11/6/2018
- Phantom: SAM-Twin V8.0 P1aP2a; Type: QD 000 P41 AA ; Serial: 1962
- Measurement SW: DASY52, Version 52.10 (2);

Body Worn Back/GSM 1900 Mid/Area Scan (71x91x1): Interpolated grid: $dx=1.500 \text{ mm}$, $dy=1.500 \text{ mm}$
 Maximum value of SAR (interpolated) = 0.406 W/kg

Body Worn Back/GSM 1900 Mid/Zoom Scan (5x5x7)/Cube 0: Measurement grid: $dx=8\text{mm}$, $dy=8\text{mm}$, $dz=5\text{mm}$
 Reference Value = 10.91 V/m ; Power Drift = 0.09 dB
 Peak SAR (extrapolated) = 0.561 W/kg
SAR(1 g) = 0.301 W/kg; SAR(10 g) = 0.170 W/kg (SAR corrected for target medium)
 Maximum value of SAR (measured) = 0.318 W/kg



$0 \text{ dB} = 0.318 \text{ W/kg} = -4.98 \text{ dBW/kg}$

Test Plot 12#: PCS 1900_Body Back_Middle

DUT: 2G GSM bar phone; Type: Jeimy; Serial: 19102500105;

Communication System: UID 0, Generic GPRS-4 slots (0); Frequency: 1880 MHz; Duty Cycle: 1:2
 Medium parameters used (interpolated): $f = 1880 \text{ MHz}$; $\sigma = 1.374 \text{ S/m}$; $\epsilon_r = 40.987$; $\rho = 1000 \text{ kg/m}^3$
 Phantom section: Flat Section

DASY5 Configuration:

- Probe: EX3DV4 - SN7522; ConvF(7.91, 7.91, 7.91) @ 1880 MHz;
- Sensor-Surface: 4mm (Mechanical Surface Detection)
- Electronics: DAE4 Sn1562; Calibrated: 11/6/2018
- Phantom: SAM-Twin V8.0 P1aP2a; Type: QD 000 P41 AA ; Serial: 1962
- Measurement SW: DASY52, Version 52.10 (2);

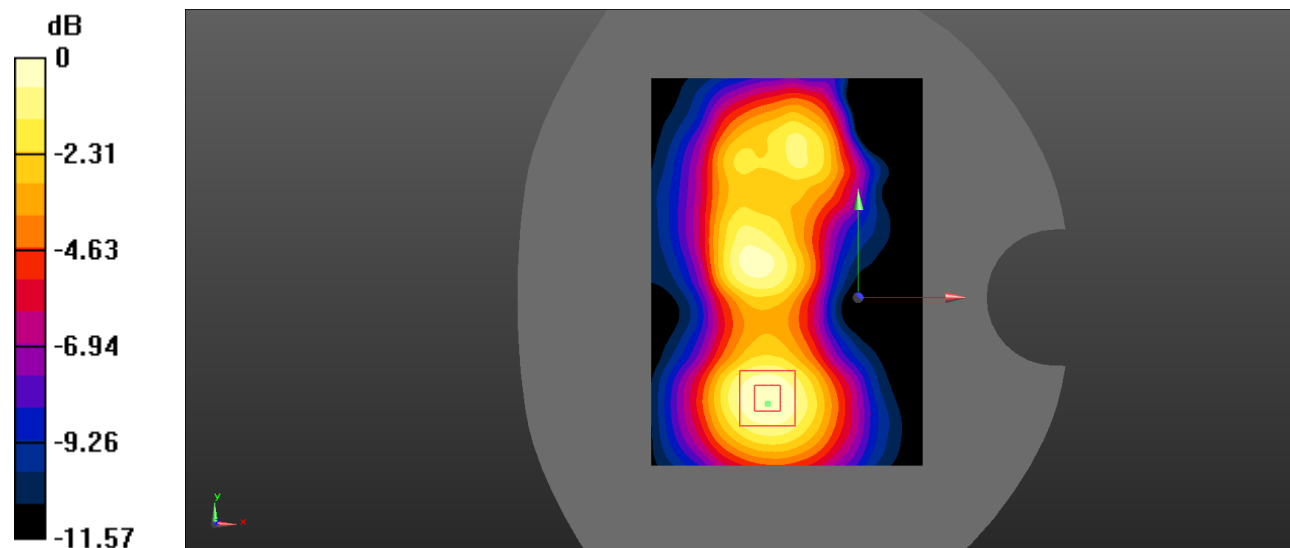
Body Back/GSM 1900 Mid/Area Scan (71x101x1): Interpolated grid: $dx=1.500 \text{ mm}$, $dy=1.500 \text{ mm}$
 Maximum value of SAR (interpolated) = 0.282 W/kg

Body Back/GSM 1900 Mid/Zoom Scan (5x5x7)/Cube 0: Measurement grid: $dx=8\text{mm}$, $dy=8\text{mm}$, $dz=5\text{mm}$
 Reference Value = 9.604 V/m ; Power Drift = 0.11 dB

Peak SAR (extrapolated) = 0.386 W/kg

SAR(1 g) = 0.255 W/kg; SAR(10 g) = 0.158 W/kg (SAR corrected for target medium)

Maximum value of SAR (measured) = 0.275 W/kg



0 dB = $0.275 \text{ W/kg} = -5.61 \text{ dBW/kg}$