

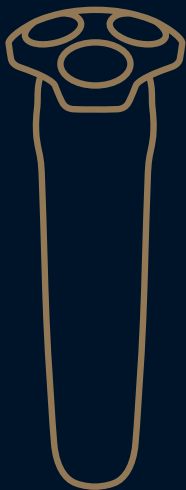
PHILIPS







NORELCO

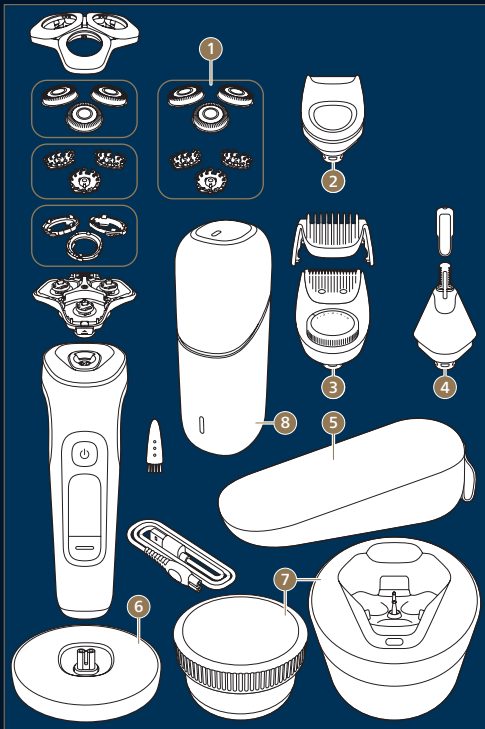
Shaver

i9000

Prestige Ultra



	Initial setup Configuración inicial	5	 	5+1 Precision Beard Styler Recortadora de barba con precisión 5+1	19
	Important to know Aspectos importantes a saber	6	  	Nose and ear trimmer Cortador de vello de nariz y oreja	20
	Charging your shaver Cargar su afeitadora	7	 	Thorough cleaning Limpieza a fondo	21
	Shaving modes Selección de modos	8		Installing Cleaning cartridge Instalar el cartucho de limpieza	23
	Light guidance Guía de luz	12		How to clean with cleaning station Cómo limpiar con la estación de limpieza	24
 	Dry shaving Afeitado seco	16	 	Cleaning cartridge replacement Reemplazar el cartucho de limpieza	25
  	Wet shaving Afeitado húmedo	17	 	Blade replacement (SH91) Reemplazar la cuchilla (SH91)	26
 	Changing click-on attachments Cambiar los accesorios de ajuste de clic	18			
 	Precision trimmer Cortadora de precisión	18			



Accessories included

Accesorios incluidos

	1	2	3	4	5	6	7	8
XP9401/83	✓		✓		✓			
XP9405/84		✓			✓	✓		
XP9402/86		✓			✓	✓	✓	
XP9403/88			✓	✓	✓	✓	✓	
XP9400/89	✓							✓



GET STARTED
Cómo empezar

www.philips.com/MyShaver19000PrestigeUltra



Initial setup

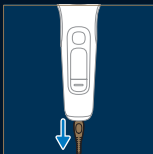
Configuración inicial





Important to know

Aspectos importantes a saber



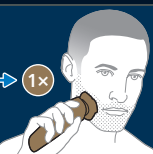
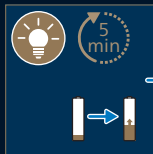
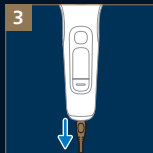
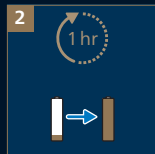
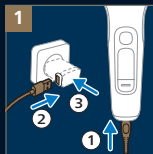
Important to know

Aspectos importantes a saber








Charging your shaver

Cargar su afeitadora




Shaving modes

During your shave you can select your preferred shaving mode. Each mode has its own characteristics.

 Sensitive	For a shave that is softer on the skin.
 Regular	A great all-rounder for daily shaving.
 Intense	Higher power for heavy beards.
 Foam	Optimized for shaving with foam or gel.
 Custom	Shave your way with customized settings. (Only configurable in the app)

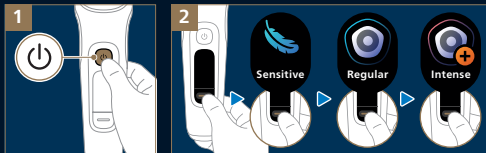
Modos de afeitado

Mientras se afeita, puede elegir su modo de afeitado preferido. Cada modo tiene sus propias características.

 Sensitive	Para un afeitado más gentil con su piel.
 Regular	Ideal para el afeitado diario.
 Intense	Mayor potencia para barbas gruesas.
 Foam	Optimizado para afeitarse con espuma o gel.
 Custom	Aféitese a su manera con configuraciones personalizadas. (Solo configurable en la aplicación)

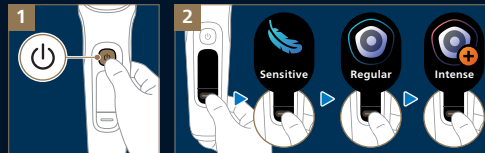
Selecting modes

You can toggle between modes by pressing the mode button when the shaver is switched on. Your last selected mode will be stored for your next shave.



Selección de modos

Cuando la afeitadora está encendida, puede cambiar el modo presionando el botón de modo. El último modo seleccionado se guardará para su próximo afeitado.



Light guidance

The light ring on your shaver can assist you in improving your shaving performance.

The light ring at the top of your shaver can provide you:

Pressure feedback

Providing guidance in applying the right amount of pressure



Too little pressure

Perfect pressure

Too much pressure

Motion feedback

Providing guidance in making the right rotational motions.



Guía de luz

El anillo de luz en su afeitadora puede ayudarlo a mejorar su rendimiento al afeitarse.

El anillo de luz en la parte superior de su afeitadora puede proporcionarle:

Retroalimentación de presión

Le ofrece orientación para aplicar la cantidad correcta de presión



Muy poca presión

Presión ideal

Demasiada presión

Retroalimentación de movimiento

Le ofrece orientación para realizar los movimientos de rotación correctos.



Combined feedback

Providing guidance both applying the right pressure and making the right rotational motions.



Wrong motions:
Purple light ring



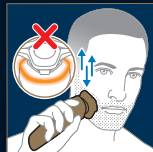
Too much
pressure: Orange
light ring

Retroalimentación combinada

Le ofrece orientación tanto para aplicar la cantidad de presión ideal como para realizar los movimientos de rotación correctos.



Movimientos
incorrectos:
Anillo de luz
púrpura

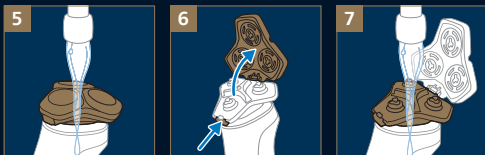
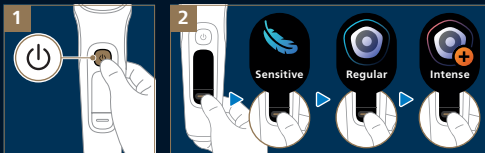


Demasiada
presión: Anillo
de luz naranja



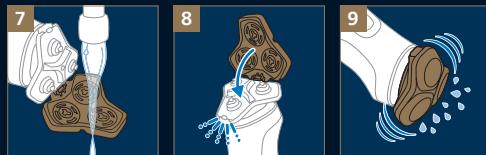
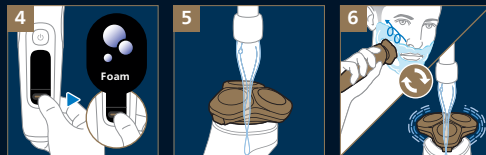
Dry shaving

Afeitado seco



Wet shaving

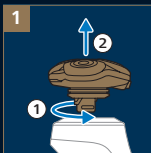
Afeitado húmedo





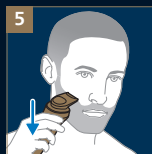
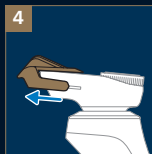
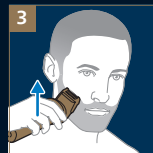
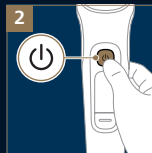
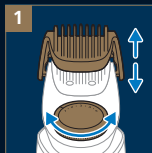
Changing click-on attachments

Cambiar los accesorios de ajuste de clic



5+1 Precision Beard Styler

Recortadora de barba con precisión 5+1



Precision trimmer

Cortadora de precisión

