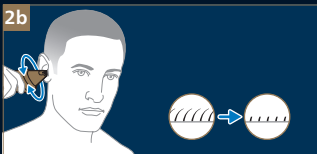
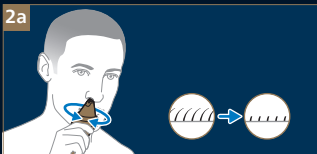
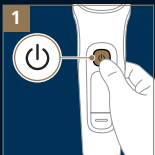




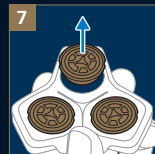
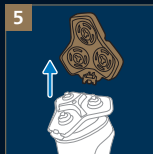
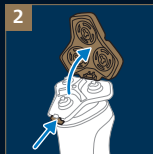
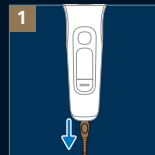
Nose and ear trimmer

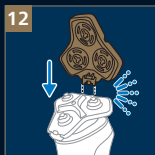
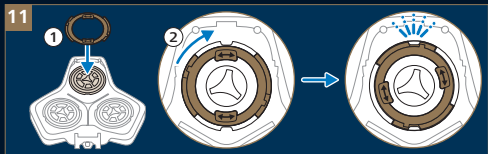
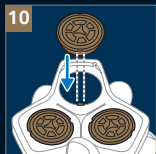
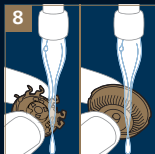
Cortador de vello de nariz y oreja



Thorough cleaning

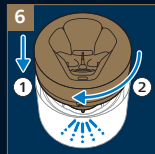
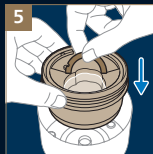
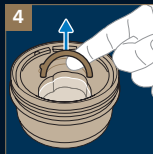
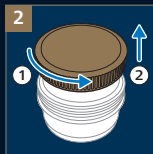
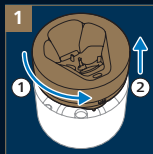
Limpeza a fundo





Installing cleaning cartridge

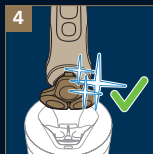
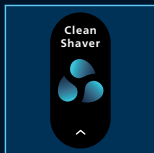
Instalar el cartucho de limpieza





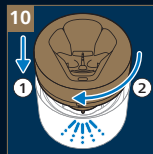
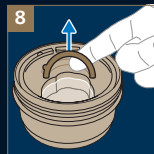
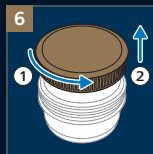
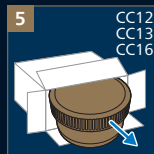
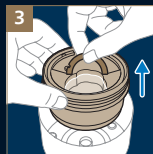
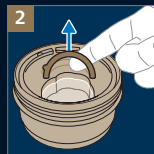
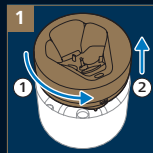
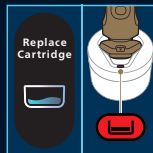
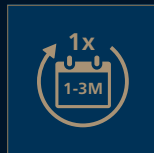
How to clean with cleaning station

Cómo limpiar con la estación de limpieza



Cleaning cartridge replacement

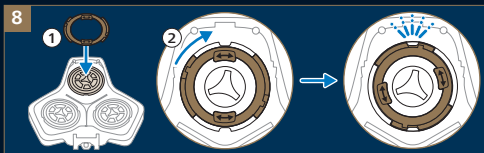
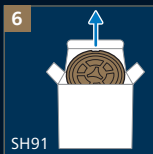
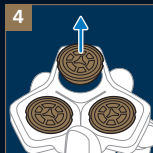
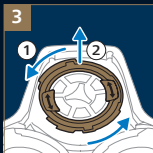
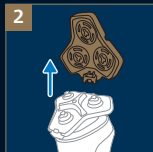
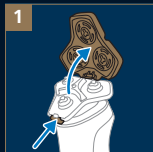
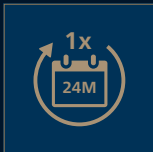
Reemplazar el cartucho de limpieza





Blade replacement (SH91)

Reemplazar la cuchilla (SH91)





Manufactured for:
Philips Personal Health
a division of Philips North America LLC
P.O. Box 10313, Stamford, CT 06904



This symbol on the product's nameplate
means it is listed by
Underwriters' Laboratories, Inc.

3000.129.4700.1



>75% recycled paper
>75% papier recyclé