

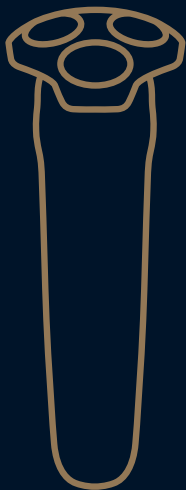
PHILIPS



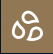






NORELCO

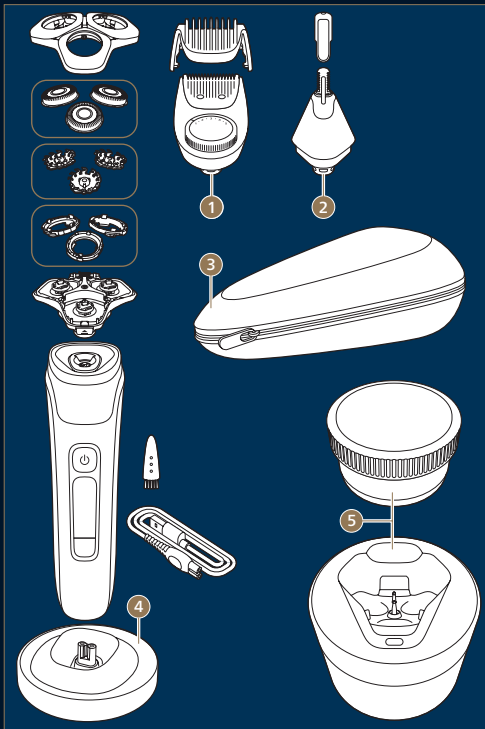
Shaver

i9000

Prestige



| | | | | | | |
|--|---|---|---|---|---|--|
|  | Initial setup Configuración inicial | 5 |  |  |  | Nose and ear trimmer 15 Cortador de vello de nariz y oreja |
|  | Important to know Aspectos importantes a saber | 6 |  |  | | Thorough cleaning 16 Limpieza a fondo |
|  | Charging your shaver Cargar su afeitadora | 7 |  | | | Installing Cleaning cartridge 18 Instalar el cartucho de limpieza |
| | Light guidance Guía de luz | 8 |  | | | How to clean with cleaning station 19 Cómo limpiar con la estación de limpieza |
|  |  | Dry shaving Afeitado seco | 10 | | | |
|  |  |  | Wet shaving Afeitado húmedo | 11 | | |
|  | Changing click-on attachments Cambiar los accesorios de ajuste de clic | 12 |  |  | | Cleaning cartridge replacement 20 Reemplazar el cartucho de limpieza |
|  |  | Precision trimmer Cortadora de precisión | 13 |  |  | Blade replacement (SH91) 21 Reemplazar la cuchilla (SH91) |
|  |  | 5+1 Precision Beard Styler Recortadora de barba con precisión 5+1 | 14 | | | |



Accessories included

Accesorios incluidos



| | 1 | 2 | 3 | 4 | 5 |
|-----------|---|---|---|---|---|
| XP9200/82 | | | ✓ | | ✓ |
| XP9201/88 | ✓ | ✓ | ✓ | ✓ | ✓ |
| XP9203/81 | | | ✓ | | ✓ |
| XP9204/85 | | | ✓ | | ✓ |



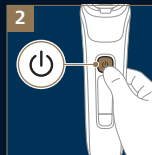
GET STARTED
Cómo empezar

www.philips.com/MyShaveri9000Prestige



Initial setup

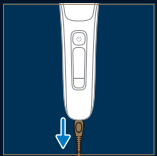
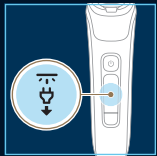
Configuración inicial





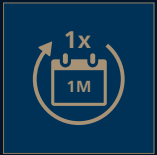
Important to know

Aspectos importantes a saber



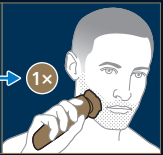
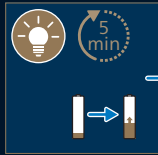
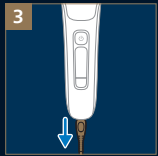
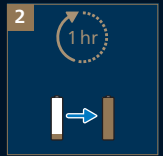
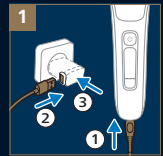
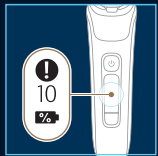
Important to know

Aspectos importantes a saber



Charging your shaver

Cargar su afeitadora



Light guidance

The light ring on your shaver can assist you in improving your shaving performance.

The light ring at the top of your shaver can provide you:

Pressure feedback

Providing guidance in applying the right amount of pressure.



Too little pressure

Perfect pressure

Too much pressure

Guía de luz

El anillo de luz en su afeitadora puede ayudarlo a mejorar su rendimiento al afeitarse.

El anillo de luz en la parte superior de su afeitadora puede proporcionarle:

Retroalimentación de presión

Le ofrece orientación para aplicar la cantidad correcta de presión.



Muy poca presión

Presión ideal

Demasiada presión



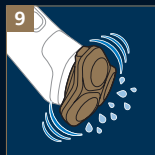
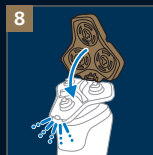
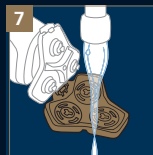
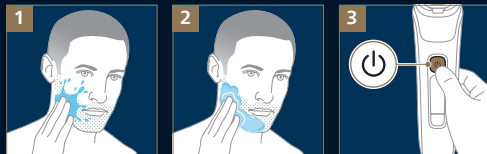
Dry shaving

Afeitado seco



Wet shaving

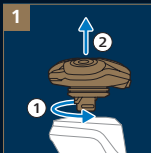
Afeitado húmedo





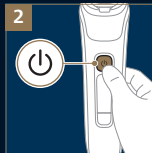
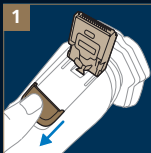
Changing click-on attachments

Cambiar los accesorios de ajuste de clic



Precision trimmer

Cortadora de precisión





5+1 Precision Beard Styler

Recortadora de barba con precisión 5+1



Nose and ear trimmer

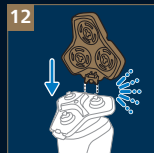
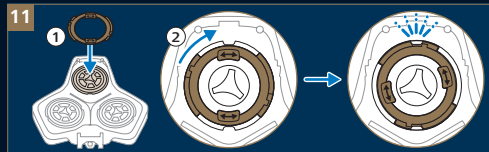
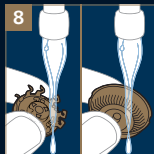
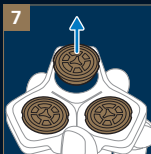
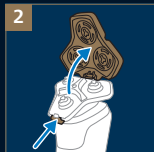
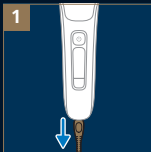
Cortador de vello de nariz y oreja





Thorough cleaning

Limpezia a fondo





Installing cleaning cartridge

Instalar el cartucho de limpieza



How to clean with cleaning station

Cómo limpiar con la estación de limpieza

