



NEED HELP?

Chat with our support agent if you have any questions or comments.

Or email us at support@furbo.com



FEDERAL COMMUNICATIONS COMMISSION INTERFERENCE STATEMENT

This equipment has been tested and found to comply with the limits for a Class B digital device, pursuant to Part 15 of the FCC Rules. These limits are designed to provide reasonable protection against harmful interference in a residential installation. This equipment generates, uses and can radiate radio frequency energy and, if not installed and used in accordance with the instructions, may cause harmful interference to radio communications. However, there is no guarantee that interference will not occur in a particular installation. If this equipment does cause harmful interference to radio or television reception, which can be determined by turning the equipment off and on, the user is encouraged to try to correct the interference by one or more of the following measures: Reorient or relocate the receiving antenna. Increase the separation between the equipment and receiver. Connect the equipment into an outlet on a circuit different from that to which the receiver is connected. Consult the dealer or an experienced radio/TV technician for help. CAUTION: Any changes or modifications not expressly approved by the party responsible for compliance could void the user's authority to operate the equipment. This device complies with part 15 of the FCC Rules. Operation is subject to the following two conditions: (1) This device may not cause harmful interference, and (2) this device must accept any interference received, including interference that may cause undesired operation. This Transmitter must not be co-located or operating in conjunction with any other antenna or transmitter.

FCC RF Radiation Exposure Statement: This equipment complies with FCC RF radiation exposure limits set forth for an uncontrolled environment. This equipment should be installed and operated with a minimum distance of 20 centimeters between the radiator and your body.

QUICK START GUIDE

Furbo at a Glance



White : Starting up



Blue : Furbo is in use



Green : Ready for setup



Purple : No WiFi connection



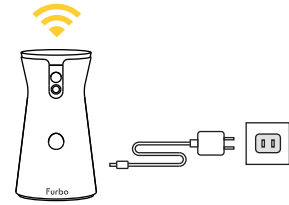
Yellow : Standby mode



Getting Started

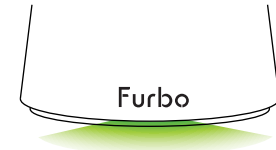
1.

Pick a spot with strong WiFi signal and plug in Furbo.



2.

Wait for the status light to turn green, this may take up to a minute.



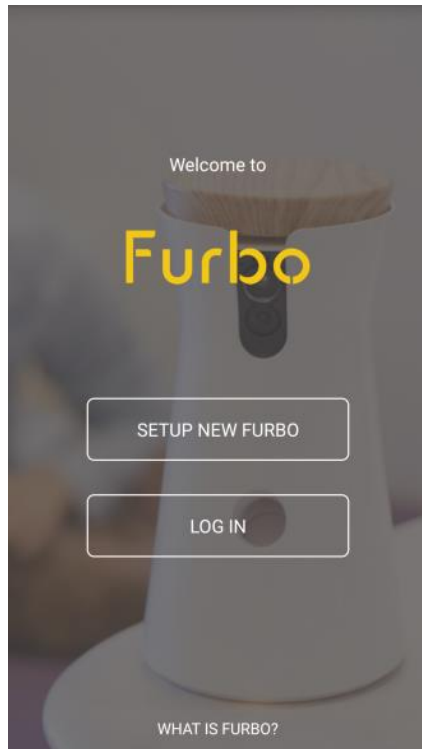
3.

Download the **Furbo** app and follow the simple setup instructions.

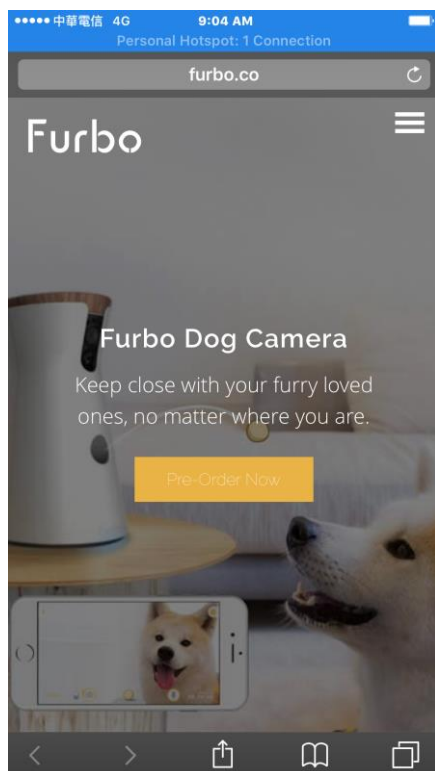


The user guide will lead users to install Furbo app. Furbo app provide all the information to guide users to finish the setup and teach how to use Furbo.

Step 1: Create account



Step 2-1: Click 'What is Furbo' then show Furbo website. www.furbo.co



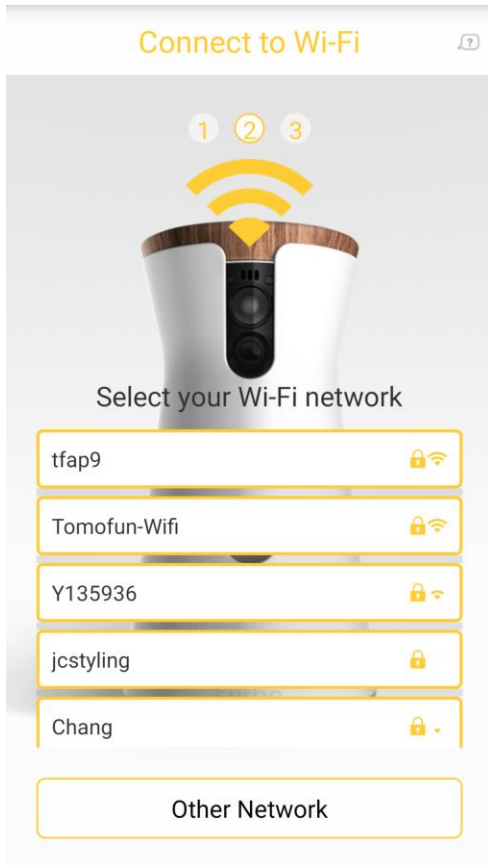
Step 2-2: Setup new Furbo



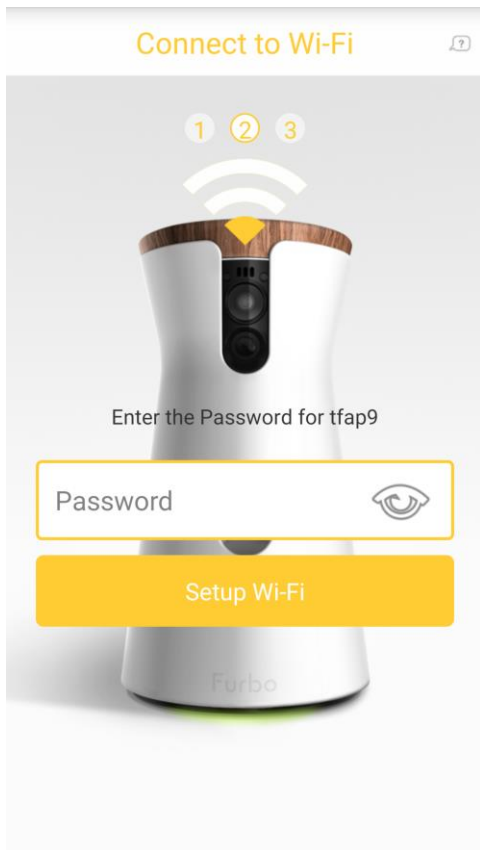
Step 3: Ready to setup wifi



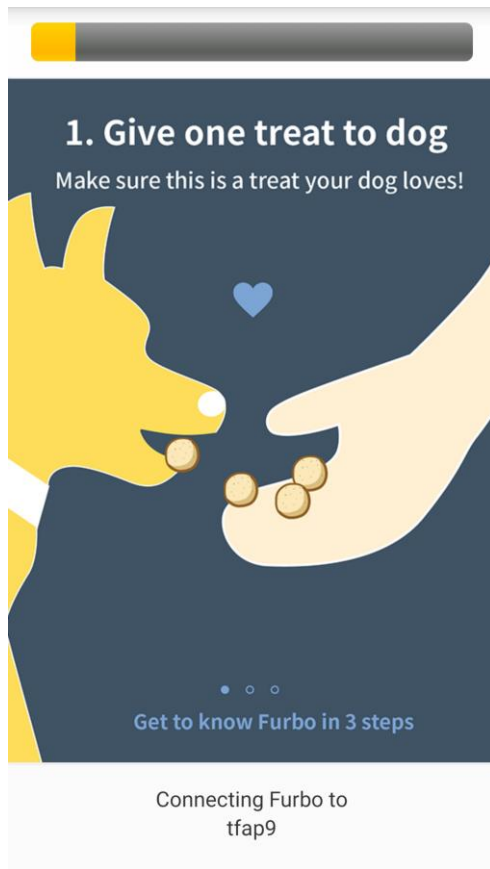
Step 4: Select home wifi



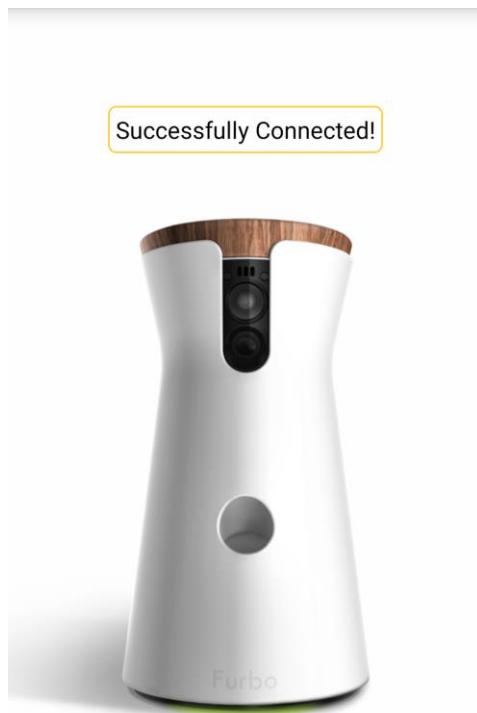
Step 5: Enter home wifi password



Step 6: Waiting for setup result



Step 7: Setup done



Step 8: Play with your dog

