

SMART INDOOR BIKE

Owner's Manual for Smart Indoor Bike

Model : CVB-001

This manual contains important safety, assembly, operation and maintenance information.

Please read and fully understand this manual before operation.

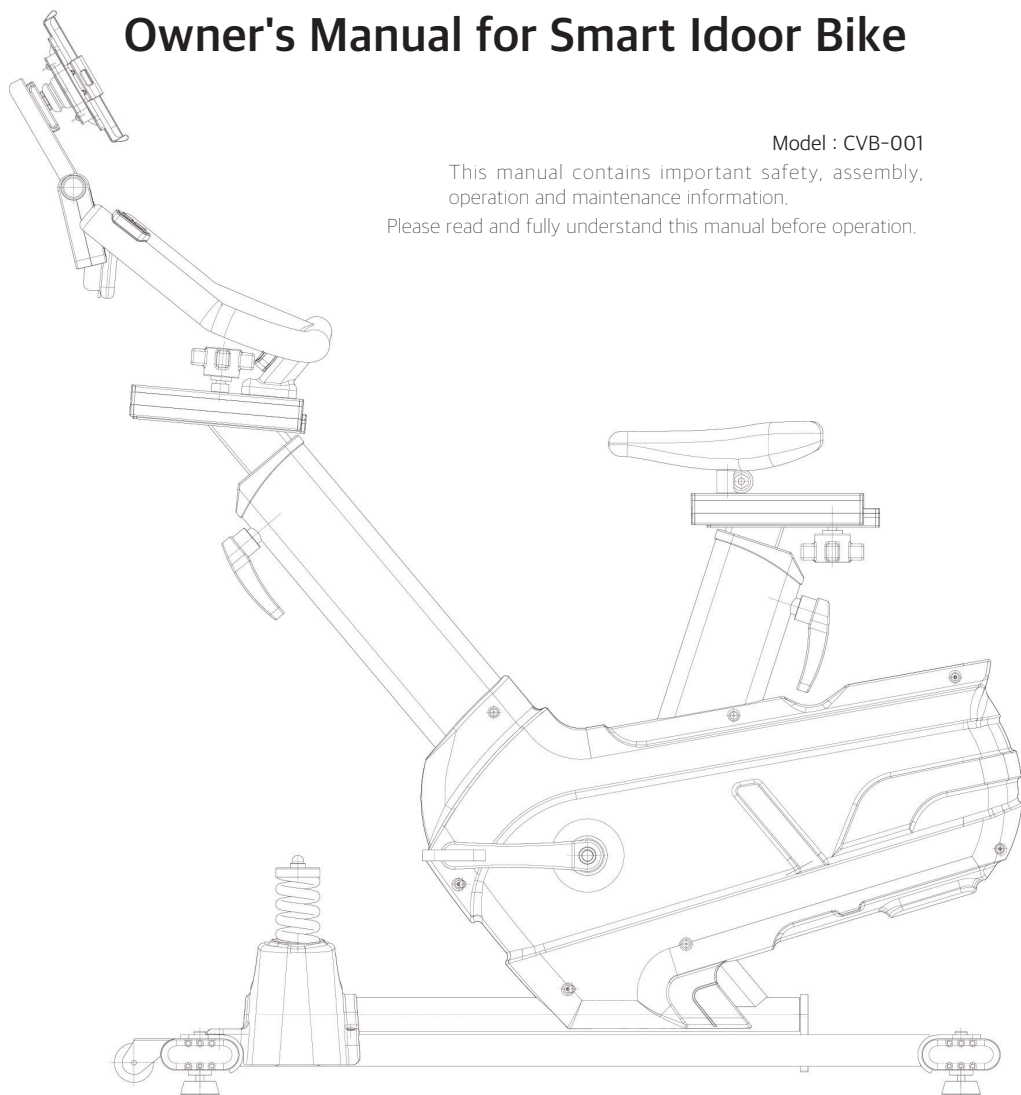


TABLE OF CONTENTS

- Safety Precautions
 - Important Safety Instructions..... 3
 - Safety Warning Labels..... 4
- Features..... 6
- Specifications..... 7
- Operation..... 8
- Maintenance..... 9
- Warranty..... 10
- Contact Information..... 11

IMPORTANT SAFETY INSTRUCTIONS



This symbol is important. See the word “CAUTION” or “WARNING” which follows it.

The word “CAUTION” is before mechanical instructions. If you do not obey these instructions, mechanical damage or failure of a part of the equipment can occur.

The word a “WARNING” is before personal safety instructions. If you do not obey these instructions, injury to the user or to others can occur.



PRIOR TO USING THIS EQUIPMENT, OBSERVE THE FOLLOWING WARNINGS:

- Read and understand the complete Owner's Manual.
- Read and understand all CAUTIONS and WARNINGS on this machine.
- Keep children away from this machine and/or supervise them closely if they are near the machine or present during its operation. This machine is not suitable as a children's toy. There is a natural tendency for children to want to play on exercise equipment, and parents and others in charge of children should be aware of their respective responsibilities. Moving parts that may appear to present obvious hazards to adults may not appear to do so to children.
- Consult a physician prior to commencing an exercise program. If, at any time, you feel faint or dizzy, or experience pain, stop and consult your physician.
- Inspect this machine for loose parts or signs of wear. Pay special attention to the seat, pedals, and crank arms. Do not use if found in this condition. Contact ConsiderC Customer Service.
- Set up and operate this exercise machine on a solid level surface.



PRIOR TO USING THIS EQUIPMENT, OBSERVE THE FOLLOWING WARNINGS: (Cont'd)

- This machine is designed for a user weight limit of 150kg (330.6lbs). Do not use if you are over this weight.
- Do not shake the machine hard. The machine has sway function to simulate natural movement of bicycle but intentionally swaying the machine may result in falling of the machine.
- Set up the machine so that there is a free area of 19.7 inches (0.5 m) on all sides of the machine. Keep third parties out of this area when the machine is in use.
- Operate the machine in the manner described in this manual. It can be hazardous to over exert yourself during exercise.
- Make sure that all positional adjustment devices are securely engaged.

FEATURES

- Smart indoor bike is a VR-based indoor exercise bike that will let you have effective, realistic, and fun indoor cycling experience.
- Various tests in the Virchy App will let you know more about yourself. How fit you are, your strength and weakness, and so on.
- The Virchy App is your guide to improve your cycling skills. The app will help you to set up your goal, recommend routes, and teach you how to improve your pedaling.
- Routes from around the world will be waiting for you. Short, long, flat, steep, you can ride with other people in the Virchy Community.
- Video riding is GPS-based. When you start climbing the hill, you will be able feel it. Gear shift buttons will help you to go over steep hills.

SPECIFICATIONS

Program	Virchy Bike Application
Compatible Device	Android/iOS that supports Bluetooth 4.0
Compatible OS	IOS6, Android 4.3 or Above
Resistance Unit	Eddy Current Brake. (Max. Power 1400W)
Display	Power, Cadence, Speed, Time, Inclune, Declune, Vertical Feet, Calorie Burned, Calories/Hour, Heartrate, etc.
Charging Station	USB Charger
Heartrate Measurement	Bluetooth 4.0 HRM(wrist-worn or chest-worn)
VR Wind System	Optional (up to 148 CFM)
Machine Size (WxLxH)	70cm x 110cm x 100cm / 28inches x 43inches x 39inches
Machine Weight	70Kg / 154lbs
Max User Weight	130Kg / 330.6lbs
Materials	Steel, aluminum, and ABS
Electricity Consumption	Max. 90W/h (Standby – less than 1W/h)
Power Supply	24V 5A Adapter

OPERATION

Assembly

You will need a standard-sized driver

- ① Assemble the base frame.
- ② Put the sit post assembly into the hole in the center and adjust properly
- ③ Put the handlebar assembly into the front hole and adjust properly
 - When you plug in the power unit , the LED lights up in the front Bluetooth button.

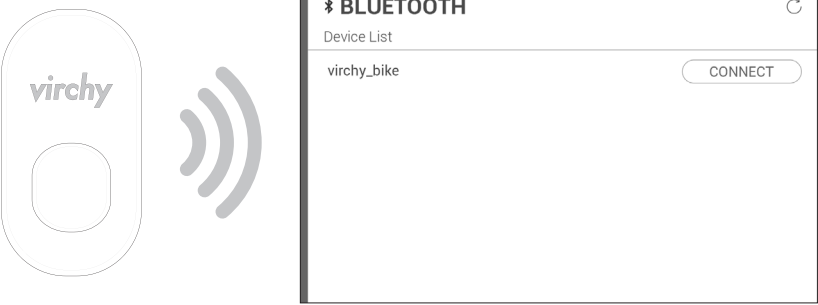


Android Play Store app, downloaded from Birch bike

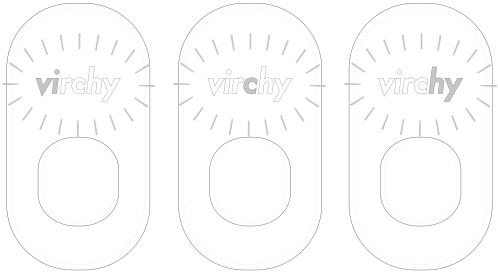
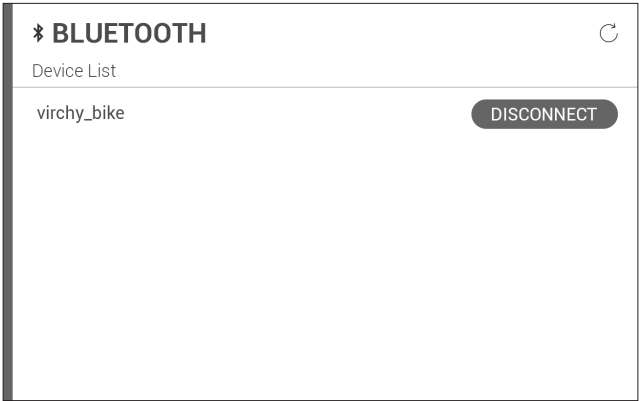
- ① Starting
- ② Pairing
- ③ Using the app

PAIRING

①



②



MAINTENANCE

• CLEANING

- Clean with soap and water cleaners only. Never use solvents on plastic parts.
- Cleanliness of your bike and its operating environment will keep maintenance problems and service calls to a minimum. For this reason, ConsiderC recommends that the following preventive maintenance schedule be followed.

• AFTER EACH USE (DAILY)

- Turn off the bike by unplugging the power cord from the wall outlet.
- Wipe down the bike with a damp cloth. Never use solvents, as they can cause damage to the bike.
- Inspect the power cord. If the power cord is damaged, contact ConsiderC.
- Make sure the power cord is not underneath the bike or in any other area where it can become pinched or cut.

• WEEKLY

- Clean underneath the bike, following these steps:
 - Turn off the bike.
 - Move the bike to a remote location.
 - Wipe or vacuum any dust particles or other objects that may have accumulated underneath the bike.
 - Return the bike to its previous position.

• EVERY MONTH

- Inspect all assembly bolts and pedals on the machine for proper tightness.
- The safety level of the equipment can be maintained only if it is examined regularly for damage and wear, e.g. connection parts. If any deterioration is observed, immediately replace all faulty parts and do not use until it is repaired.

WARRANTY

Smart indoor bike is warranted to the retail purchaser to be free from defects in materials and workmanship. Warranty coverage valid to the original purchaser only and proof of purchase will be required. Any product sold or placed in an application not recommended by ConsiderC will void any warranty coverage set forth hereinafter.

TIME PERIOD

5 years on frame; 2 years on bike parts; 1 year on wear items and labor This warranty excludes wear items that need to be replaced due to normal wear and tear.

THIS WARRANTY DOES NOT COVER

- ① Any component on original equipment which carries a separate consumer warranty of the parts supplier.
- ② Normal wear and tear.
- ③ Any damage, failure or loss caused by accident, misuse, neglect, abuse, improper assembly, improper maintenance, or failure to follow instructions or warnings in the Owner's Manual.
- ④ Use of products in a manner or environment for which they were not designed.

WARRANTY

LIMITATIONS

The foregoing warranties are in lieu of and exclude all other warranties not expressly set forth herein, whether express or implied by operation of law or otherwise, including, but not limited to, warranties of merchantability or fitness for a particular purpose. ConsiderC shall in no event be liable for incidental or consequential losses, damages or expenses in connection with its exercise products. ConsiderC's liability hereunder is expressly limited to the replacement of goods not complying with this warranty or, at ConsiderC's election, to the repayment of an amount of the purchase price of the exercise product in question. Some states do not permit the exclusion or limitation of implied warranties or incidental or consequential damages, so the preceding limitations and exclusions may not apply to you.

PROCEDURES

Warranty service will be performed by ConsiderC or an authorized dealer. The original purchaser must provide proof of purchase. Service calls and/or transportation to and from the authorized dealer is the responsibility of the purchaser.

- ① ConsiderC will have the option to repair or replace any exercise product(s), which require warranty service.
- ② ConsiderC will replace any equipment frame that is structurally defective with a new frame or replace the unit with a unit of equal value. ConsiderC is not responsible for labor charges in replacing defective frames.
- ③ In the event a product cannot be repaired, ConsiderC will conduct a limited refund.
- ④ ConsiderC is not responsible for dealer labor charges for component changeovers completed after the labor-related warranty period(s) stated herein.
- ⑤ If you elect to repair an exercise product or part yourself, using the services of someone other than an authorized Dealer, or use a replacement part not supplied by ConsiderC, ConsiderC shall not be liable for any cost, damage, failure or loss caused by the use of such unauthorized service or parts.

FCC Information to User

This equipment has been tested and found to comply with the limits for a Class B digital device, pursuant to Part 15 of the FCC Rules. These limits are designed to provide reasonable protection against harmful interference in a residential installation. This equipment generates, uses and can radiate radio frequency energy and, if not installed and used in accordance with the instructions, may cause harmful interference to radio communications. However, there is no guarantee that interference will not occur in a particular installation. If this equipment does cause harmful interference to radio or television reception, which can be determined by turning the equipment off and on, the user is encouraged to try to correct the interference by one of the following measures:

- Reorient or relocate the receiving antenna.
- Increase the separation between the equipment and receiver.
- Connect the equipment into an outlet on a circuit different from that to which the receiver is connected.
- Consult the dealer or an experienced radio/TV technician for help.

Caution

Modifications not expressly approved by the party responsible for compliance could void the user's authority to operate the equipment.

FCC Compliance Information : This device complies with Part 15 of the FCC Rules. Operation is subject to the following two conditions: (1) This device may not cause harmful interference, and (2) this device must accept any interference received, including interference that may cause undesired operation

IMPORTANT NOTE:

FCC RF Radiation Exposure Statement:

This equipment complies with FCC RF radiation exposure limits set forth for an uncontrolled environment.

The antennas used for this transmitter must be installed to provide a separation distance of at least 20Cm from all persons and must not be co-located or operating in conjunction with any other antenna or transmitter.

CAUTION

To reduce the risk of electric shock, do not remove the top cover (or the rear section).
No user serviceable parts inside, refer servicing to qualified personnel.



This symbol, wherever it appears, alerts you to the presence of uninsulated dangerous voltage inside the enclosure-voltage that may be sufficient to constitute a risk of shock.



This symbol, wherever it appears, alerts you to the important operating and maintenance instructions in the accompanying literature. Please read the manual.

- 1) Read these instructions.
- 2) Keep these instructions.
- 3) Heed all warnings.
- 4) Follow all instructions.
- 5) Do not use this equipment near water.
- 6) Do not use near any heat sources such as radiators, heat resistors, stove, or other equipment that produce heat.

CAUTION

**RISK OF EXPLOSION IF BATTERY IS REPLACED
BY AN INCORRECT TYPE.
DISPOSE OF USED BATTERIES ACCORDING
TO THE INSTRUCTIONS**

European CE notice to users and product statements

This product is CE marked according to the provisions of the R&TTE Directive(99/5/EC). Hereby, ConsiderC Inc. declares that this product is in compliance with the essential requirements and other relevant provisions of Directive 1999/5/EC.

For further information, please contact [http:// www.considerc.com](http://www.considerc.com)

CE1177

ConsiderC Inc.

Mapo Biz.Center #511, 18 Maebongsanro, Mapo-gu, Seoul City, Korea

Tel: +82-70-4651-6908

Fax: +82-70-8610-6909

URL: www.considerc.com

CONTACT INFORMATION

Manufacturer Address : Mapo Biz.Center #511, 18 Maebongsanro, Mapo-gu, Seoul City, Korea

To locate in-country ConsiderC Inc., distributors of the SMART INDOOR BIKE please refer to the ConsiderC Inc. Website [http:// www.considerc.com](http://www.considerc.com)

These distributor(s) represent local contacts for this product.

CORPORATE HEADQUARTERS:

ConsiderC Inc.

Mapo Biz.Center #511, 18 Maebongsanro, Mapo-gu, Seoul City, Korea

Tel: +82-70-4651-6908

Fax: +82-70-8610-6909

Web: [http:// www.considerc.com](http://www.considerc.com)

This device complies with Industry Canada license-exempt RSS standard(s).

Operation is Subject to the following two condition: (1) this device may not cause interference ,and (2) this device must accept any interference, including interference that may cause undesired operation of the device.

EUROPEAN UNION “DECLARATION OF CONFORMITY”

DECLARATION OF CONFORMITY

ConsiderC Inc.

Mapo Biz.Center #511, 18 Maebongsanro, Mapo-gu, Seoul City, Korea

declare under our sole responsibility that the product(s)

SMART INDOOR BIKE – CVB-001

to which this declaration relate(s) is in conformance with the following standards:

EN 301 489-1 V1.9.2:2011

EN 301 489-17 V2.2.1:2012

EN 60950-1:2006/A2:2013

EN 300 328 V1.9.1:2015

following the provisions of the 1999/5/EC Directives.



C O N S I D E R C

18 Maebongsan-ro #511, Mapo-gu, seoul 03911 Korea
considerC Inc.

Tel +82) 70-4651-6908

Fax +82) 70-8610-6909

www.virchybike.com

info@considerc.com