

Basic:

Data transmission:1Mbps
Frequency: 2402-2480
Channel: 16
Engine:Optical
Distance:15m
Voltage:3V
Current:4mA
Mouse key life:500W Above
Size:115*78*38mm
weight:95g

Tracking performance:

Resolution:1000-1500-2000DPI
Mouse rate of return:250HZ
Max.acceleration:20G

Step current:

Working current = 4mA
Standby current = 1.3mA
Dormancy current = 50uA
No receiver state = 10-25uA

System requirement:

System supported:windows 2000/XP/Vista/ Windows 7/ Windows 8/
windows10/MAC/Linux



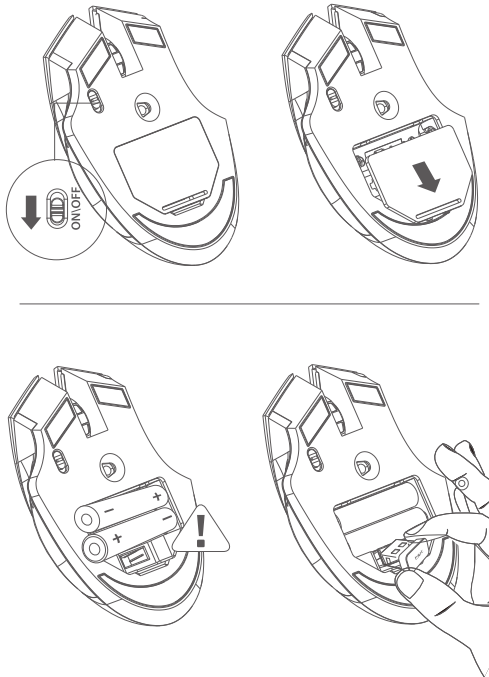
WWW.HAVIT.HK MADE IN P.R.C



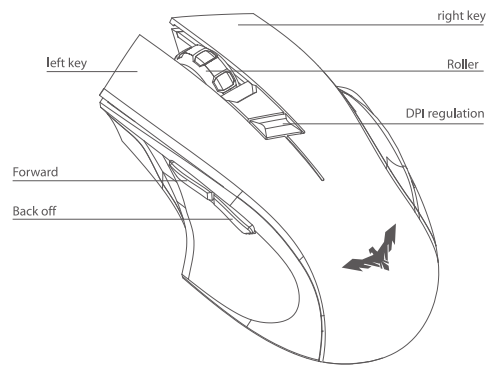
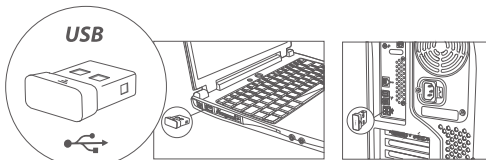
Model: HV-MS976GT



QUICK START GUIDE



QUICK START GUIDE



Three DPI transmission
The primary game player design, switch freely change among 1000-1500-2000.Quick side buttons design make you turn the page up and down, forward and backward quickly.

FCC NOTE

This device complies with Part 15 of the FCC Rules.

Operation is subject to the following two conditions: (1) this device may not cause harmful interference, and (2) this device must accept any interference received, including interference that may cause undesired operation.

THE MANUFACTURER IS NOT RESPONSIBLE FOR ANY RADIO OR TV INTERFERENCE CAUSED BY UNAUTHORIZED MODIFICATIONS OR CHANGE TO THIS EQUIPMENT. SUCH MODIFICATIONS OR CHANGE COULD VOID THE USER'S AUTHORITY TO OPERATE THE EQUIPMENT.

This equipment has been tested and found to comply with the limits for a Class B digital device, pursuant to part 15 of the FCC Rules. These limits are designed to provide reasonable protection against harmful interference in a residential installation. This equipment generates, uses and can radiate radio frequency energy and, if not installed and used in accordance with the instructions, may cause harmful interference to radio communications.

However, there is no guarantee that interference will not occur in a particular installation. If this equipment does cause harmful interference to radio or television reception, which can be determined by turning the equipment off and on, the user is encouraged to try to correct the interference by one or more of the following measures:

- Reorient or relocate the receiving antenna.
- Increase the separation between the equipment and receiver.
- Connect the equipment into an outlet on a circuit different from that to which the receiver is connected. -- Consult the dealer or an experienced radio/TV technician for help.