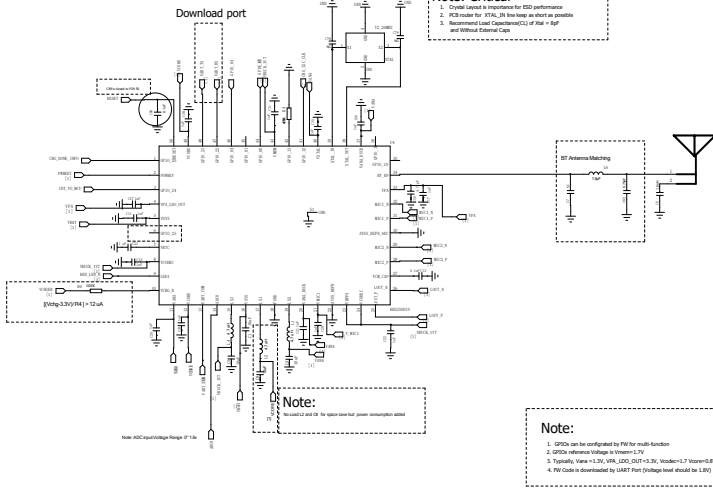


BES2500IU

Download port



Note: Critical

- Critical signal is recommended for ESD performance
- PCB route for XTAL_26 line loop as short as possible
- Recommended load Capacitor(C2) of 20pF is 80pF and Without External Caps

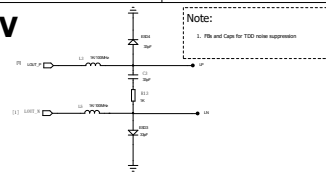
Note:

Resistor R2 and R3 for open-drain bus power consumption added

Note:

- GPIO0 can be configured to Pin for multi-function
- GPIO0 reference voltage is VDDIO=1.7V
- Typically, VDDIO = 1.2V, VDD_VDD2_GND = 0.2V, VDDIO=1.7 VDDIO=0.5V
- GPIO Config is described by UART Pinout (Pinage level) added in 1.0.0

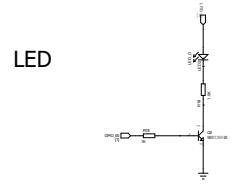
RCV



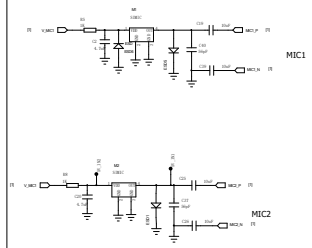
Note:

- 10k and Caps for TDD noise suppression

LED



Talk MIC

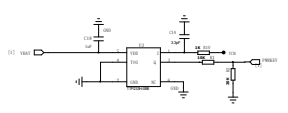


MIC MODE 1 : MEMS MIC MODE

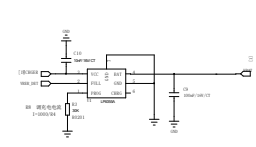
Download And BAT PAD



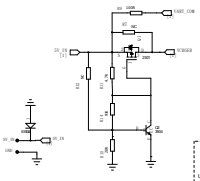
KEY



Charger



Pogo Pin & 1-wire Uart



Note:

UART_CSM input is GND can support 1.8V, 3V voltage level

REV	REV DATE	DESCRIPTION	DATE

BES technic					
BES2500IU Referen Design					
DATE	REV	DATE	REV	DESCRIPTION	REV
	2021.04				
				SCH_2500IU	1.0