

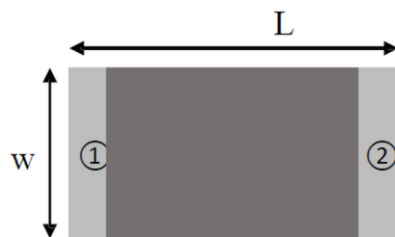
## ● Features

1. Surface Mounted Devices with a small dimension of 1.6 x 0.8 x 0.8mm meet future miniaturization trend.
2. Embedded and LTCC (low temperature co-fired ceramic) technology is able to integrate with system design as well as beautifying the housing of final product.
3. High stability and low tolerance.

## ● Applications

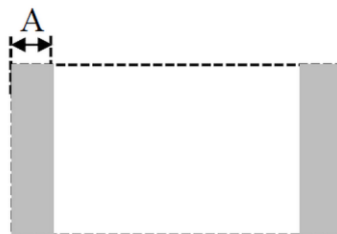
1. Bluetooth and Wireless LAN
2. ISM 2.4GHz in smart phone
3. PDA and other handheld devices.
4. ISM band 2.4GHz applications

## ● Dimensions (Unit: mm)



( Top View )

Number	Terminal Name
①	INPUT
②	NC



( Bottom View )



( Side View )

Symbols	L	W	T	A
Dimensions	1.60±0.20	0.80±0.20	0.80±0.10	0.30±0.10

SBR Communication has possession of proprietary information provided in this report and this proprietary information shall be kept in strict confidence and not disclosed to any person or firm without the prior written consent of SBR Communication Technology.

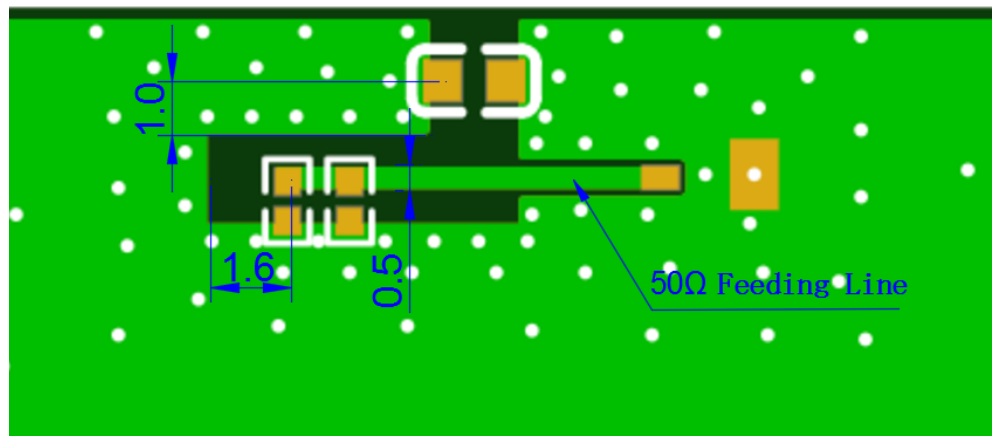
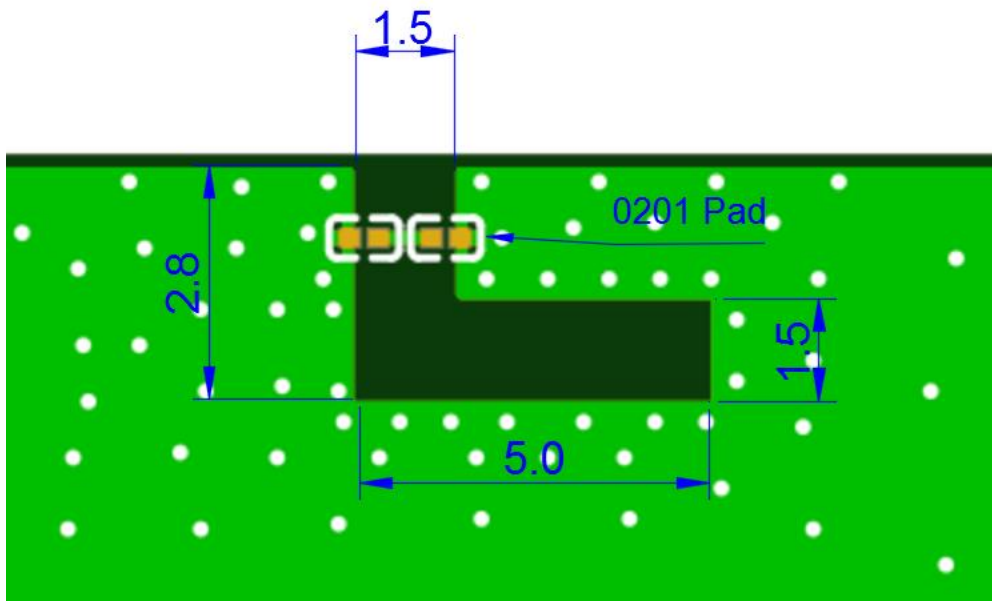
ADD: 2nd Floor, Building B25, Hengfeng Industrial City, Hezhou Community, Xixiang Street, Bao'an District, Shenzhen

TEL: 0755-82790675, FAX: 0755-82809726

[www.surbaner.com.cn](http://www.surbaner.com.cn)

1 / 6

● Evaluation Board and Matching Circuits



SBR Communication has possession of proprietary information provided in this report and this proprietary information shall be kept in strict confidence and not disclosed to any person or firm without the prior written consent of SBR Communication Technology.

ADD: 2nd Floor, Building B25, Hengfeng Industrial City, Hezhou Community, Xixiang Street, Bao'an District, Shenzhen

TEL: 0755-82790675, FAX: 0755-82809726

[www.surbaner.com.cn](http://www.surbaner.com.cn)

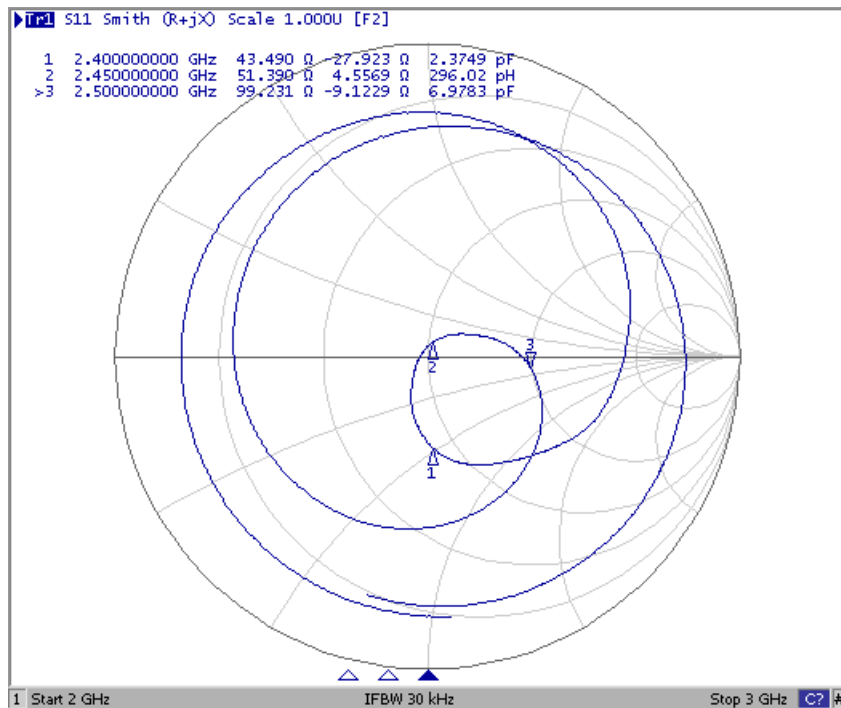
2 / 6

## ● Electrical Characteristics

Item	Feature	Specification
1	Central frequency	2445MHz
2	Bandwidth	>100MHz
3	Peak gain	2.6dBi
4	VSWR	<2
5	Polarization	Linear
6	Azimuth beamwidth	Omnidirectional
7	Impedance	50 Ω

NOTE: The specification is defined based on the test board dimension.

### (1) Smith Chart



SBR Communication has possession of proprietary information provided in this report and this proprietary information shall be kept in strict confidence and not disclosed to any person or firm without the prior written consent of SBR Communication Technology.

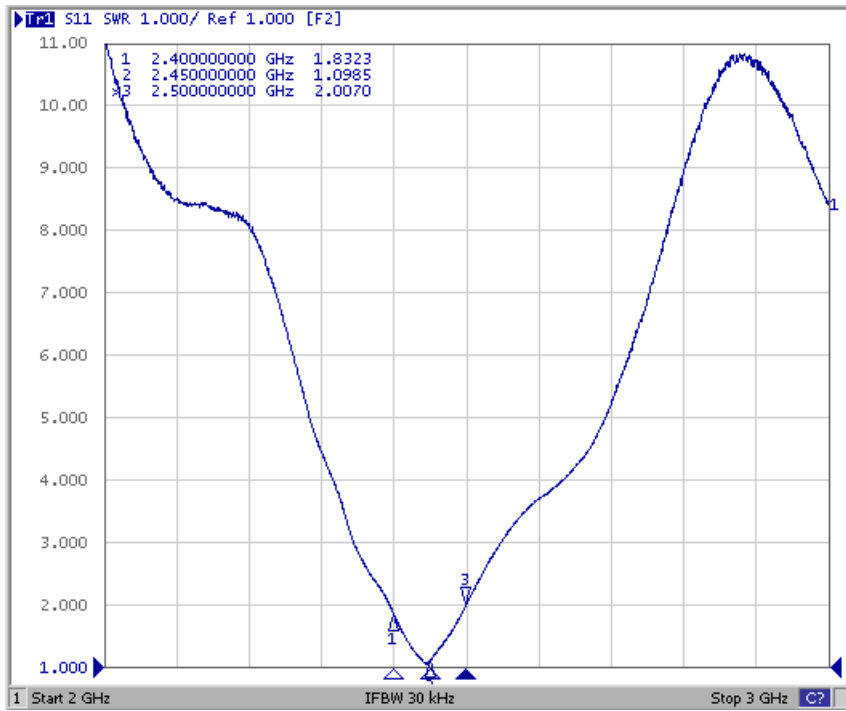
ADD: 2nd Floor, Building B25, Hengfeng Industrial City, Hezhou Community, Xixiang Street, Bao'an District, Shenzhen

TEL: 0755-82790675, FAX: 0755-82809726

[www.surbaner.com.cn](http://www.surbaner.com.cn)

3 / 6

### (2) S-Parameter



### (3) Radiation Pattern

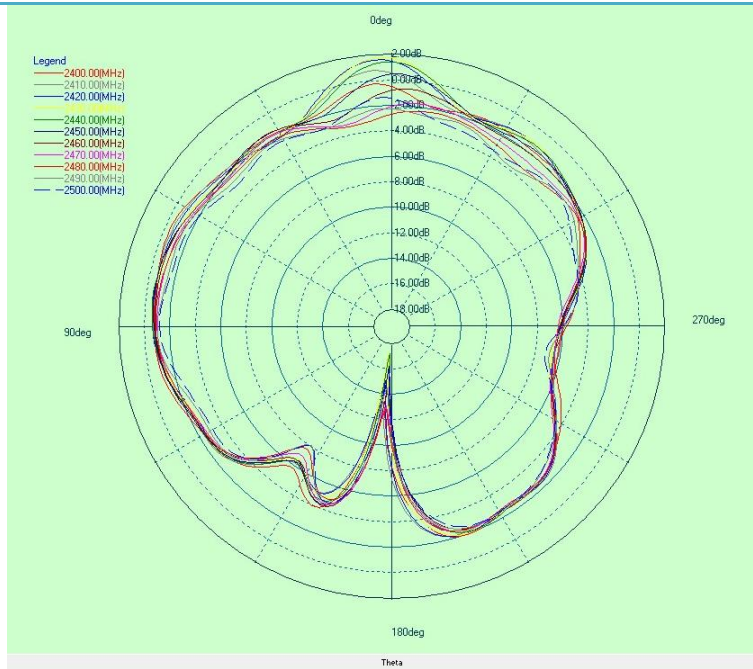


SBR Communication has possession of proprietary information provided in this report and this proprietary information shall be kept in strict confidence and not disclosed to any person or firm without the prior written consent of SBR Communication Technology.

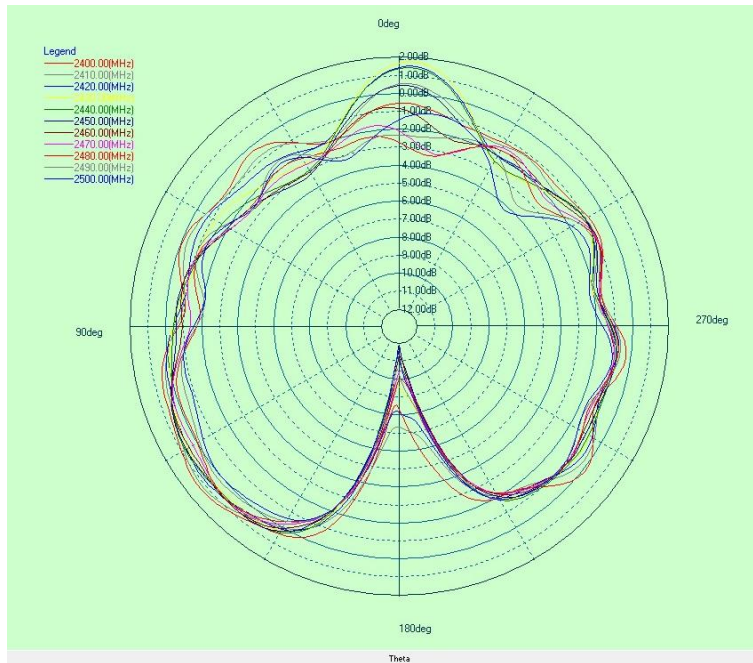
ADD: 2nd Floor, Building B25, Hengfeng Industrial City, Hezhou Community, Xixiang Street, Bao'an District, Shenzhen

TEL: 0755-82790675, FAX: 0755-82809726

[www.surbaner.com.cn](http://www.surbaner.com.cn)



Y-Z Plane



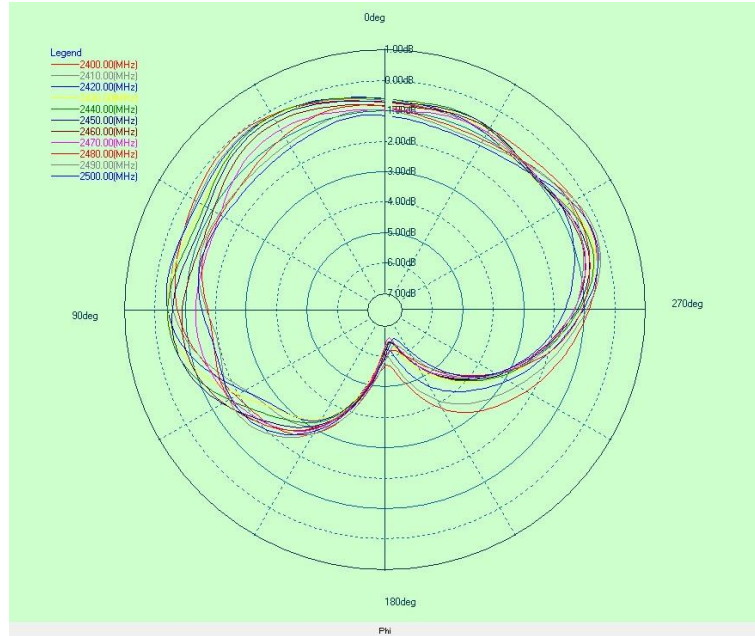
X-Z Plane

SBR Communication has possession of proprietary information provided in this report and this proprietary information shall be kept in strict confidence and not disclosed to any person or firm without the prior written consent of SBR Communication Technology.

ADD: 2nd Floor, Building B25, Hengfeng Industrial City, Hezhou Community, Xixiang Street, Bao'an District, Shenzhen

TEL: 0755-82790675, FAX: 0755-82809726

[www.surbaner.com.cn](http://www.surbaner.com.cn)



X-Y Plane

Frequency	2400MHz	2450MHz	2490MHz
Avg. gain	1.20	0.90	0.35
Peak gain	2.6	2.6	2.4
Efficiency	62%	55%	52%

● Dependability Test

Test Temperature	25°C±3°C
Operating Temperature	-25°C~+85°C
Temperature	5~+40°C
Relative Humidity	20~70%HR

SBR Communication has possession of proprietary information provided in this report and this proprietary information shall be kept in strict confidence and not disclosed to any person or firm without the prior written consent of SBR Communication Technology.

ADD: 2nd Floor, Building B25, Hengfeng Industrial City, Hezhou Community, Xixiang Street, Bao'an District, Shenzhen

TEL: 0755-82790675, FAX: 0755-82809726

[www.surbaner.com.cn](http://www.surbaner.com.cn)