

HAVIT

Dual Mode Wireless Mouse
MS61WB

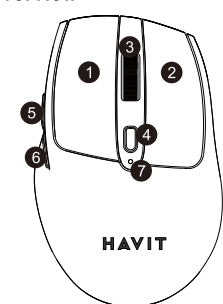
USER'S MANUAL

Product parameters

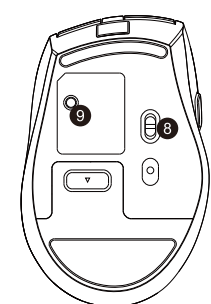
Size: 108*69*34mm
Key number: 6
Resolution: 1200-2000-3200DPI
Key life: 3,000,000 times
Power supply: 1*AA(Alkaline batteries are recommended)

01

Overview



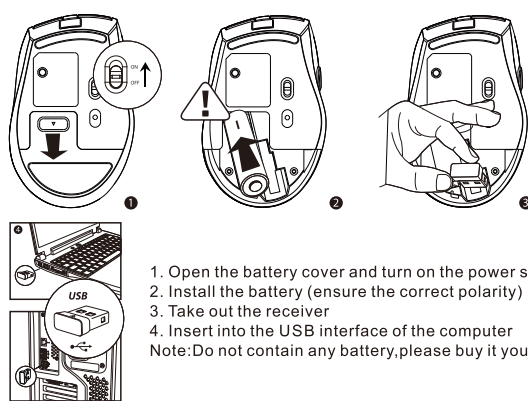
- 1. Left button
- 2. Right button
- 3. Scroll wheel
- 4. DPI button
- 5. Forward button
- 6. Back button
- 7. Indicator light



- 8. Power switch
- 9. Mode switch button & Bluetooth key

02

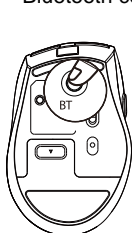
Set up



1. Open the battery cover and turn on the power supply
 2. Install the battery (ensure the correct polarity)
 3. Take out the receiver
 4. Insert into the USB interface of the computer
- Note: Do not contain any battery, please buy it yourself.

03

Bluetooth connection



1. First press the bottom mode switch button to switch to Bluetooth mode, the indicator light blue, and then long press the 3 seconds indicator light blue slow flash into the pairing state
2. Click "Bluetooth device" of the computer
3. Click "Adding or deleting Bluetooth devices"
4. The Bluetooth will search and find "MS61WB", click "matching"
5. "MS61WB" is "connected", and it's ready to use.

04

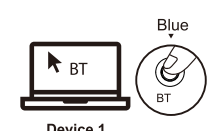
HAVIT

Mac OS system

1. Please operate the Bluetooth mode installation steps ① and ② before matching
2. Click "System preference setting" of the Mac computer.
3. Click "Bluetooth" in "System preference setting"
4. The Bluetooth will search and find "MS61WB", click "matching" and finish installation, then the mouse would be ready to use.

05

Dual mode switching



Click the bottom mode switch button, when the light is blue, the mouse into the Bluetooth mode

Trouble Shooting

If your dual mode wireless mouse can not connect to you computer or android tablet after complete the previous steps, please try the following steps to fix the issue:

1. Make sure the computer and android tablet is on
2. Press the Mode switch button to enter into the right mode
3. Reorient or relocate the receiving antenna.
4. Increase the separation between the equipment and receiver.

06

FCC Warning:

This device complies with part 15 of the FCC Rules. Operation is subject to the following two conditions: (1) This device may not cause harmful interference, and (2) this device must accept any interference received, including interference that may cause undesired operation.

Any changes or modifications not expressly approved by the party responsible for compliance could void the user's authority to operate the equipment.

This equipment has been tested and found to comply with the limits for a Class B digital device, pursuant to part 15 of the FCC Rules. These limits are designed to provide reasonable protection against harmful interference in a residential installation. This equipment generates, uses and can radiate radio frequency energy and, if not installed and used in accordance with the instructions, may cause harmful interference to radio communications. However, there is no guarantee that interference will not occur in a particular installation. If this equipment does cause harmful interference to radio or television reception, which can be determined by turning the equipment off and on, the user is encouraged to try to correct the interference by one or more of the following measures:

- Reorient or relocate the receiving antenna.
- Increase the separation between the equipment and receiver
- Connect the equipment into an outlet on a circuit different from that to which the receiver is connected.
- Consult the dealer or an experienced radio/TV technician for help.

This equipment complies with FCC radiation exposure limits set forth for an uncontrolled environment. This transmitter must not be co-located or operating in conjunction with any other antenna or transmitter.

07

08