

**HAVIT LIGHT 快速操作指南**  
 制作工艺: 风琴折, 四色印刷, 80g双铜纸过哑油  
 成品尺寸: 100x60mm, 展开尺寸: 100x660mm

正面

背面

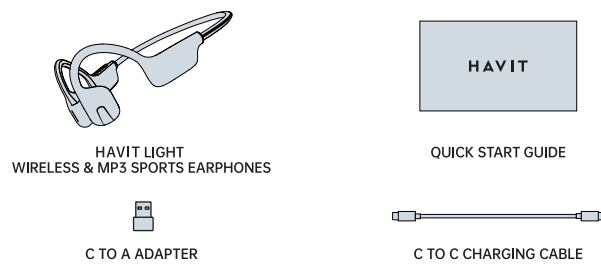
虚线折叠线

# HAVIT LIGHT

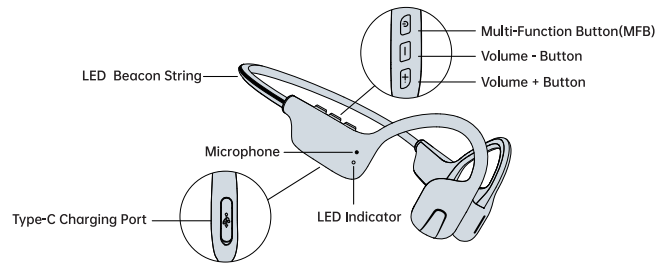
WIRELESS & MP3 SPORTS EARPHONES

QUICK START GUIDE

## 01 WHAT'S IN THE BOX



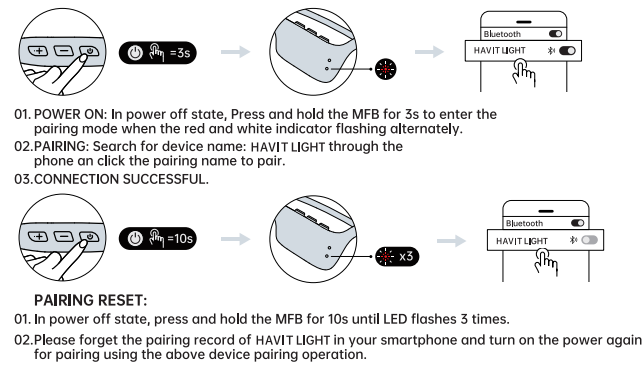
## 02 OVERVIEW



## 03 HOW TO WEAR

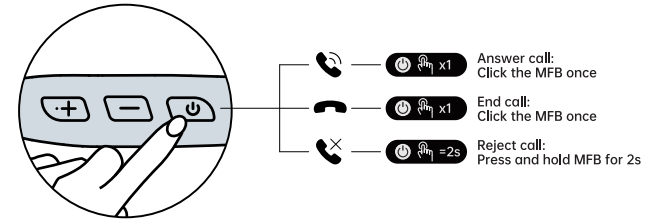


## 04 START UP AND PAIRING CONNECTION

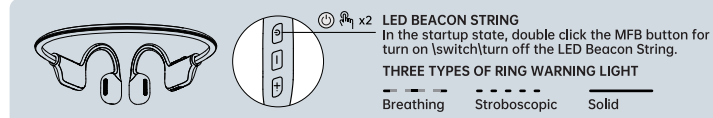
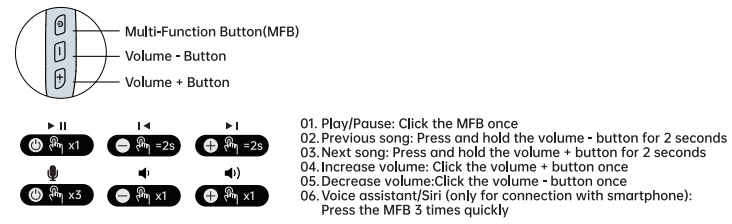


**HAVIT**

## 05 HANDS-FREE PHONE CALL

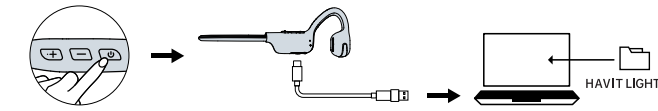


## 06 AUDIO CONTROL



## 07 TRANSFERRING CONTENT

01. Turn On HAVIT LIGHT, connect it to your computer.  
 02. HAVIT LIGHT will become a drive named "HAVIT LIGHT". Open "HAVIT LIGHT" on your computer.  
 03. Drag-and-drop audio files or folders into the "HAVIT LIGHT" drive.  
 04. You may disconnect from the USB Port once file transfer is complete.  
 The LED indicator will flash red while HAVIT LIGHT is organizing the files, during this period the buttons on HAVIT LIGHT will not be functional temporarily.  
 \* HAVIT LIGHT supports MP3, WAV, AAC, WMA, FLAC, APE, MIDI, ALAC, PCM formats.



## 08 LOCAL MUSIC FUNCTION

01. Switch between local music mode (MP3) & wireless mode: Press and hold the volume - and MFB button at the same time for 2s and then release them.  
 02. Play mode: Click MFB Button 3 times quickly to switch Loop/Shuffle playback.

## 09 SPECIFICATION

Model: HAVIT L1  
 Wireless Version: 5.3  
 Waterproof: IPX5  
 Codescs: SBC, AAC  
 Dynamic driver: ϕ16mm  
 Frequency response: 20 Hz - 20 kHz  
 Battery capacity: 150mAh (est)  
 Battery life: Up to 12 hours in 50% volume in wireless mode  
 Support format: MP3, WAV, AAC, WMA, FLAC, APE, MIDI, ALAC, PCM

## 10 IMPORTANT SAFETY INSTRUCTIONS

- Contains small parts which may be a choking hazard. Not suitable for children under age 3.
- This product contains magnetic material. Consult your physician on whether this might affect your implantable medical device.
- Do NOT make unauthorized alterations to this product.
- Use this product only with an agency approved power supply which meets local regulatory requirements (e.g., UL, CSA, VDE, CCC).
- Do not expose products containing batteries to excessive heat (e.g. from storage in direct sunlight, fire or the like).
- Wipe off sweat from the earbuds and the charging case before charging.
- IPX5 is not a permanent condition, and resistance might decrease as a result of normal wear.

NOTE: This equipment has been tested and found to comply with the limits for a Class B digital device, pursuant to Part 15 of the FCC Rules. These limits are designed to provide reasonable protection against harmful interference in a residential installation. This equipment generates, uses and can radiate radio frequency energy and, if not installed and used in accordance with the instructions, may cause harmful interference to radio communications. However, there is no guarantee that interference will not occur in a particular installation. If this equipment does cause harmful interference to radio or television reception, which can be determined by turning the equipment off and on, the user is encouraged to try to correct the interference by one or more of the following measures:

- Reorient or relocate the receiving antenna.
- Increase the separation between the equipment and receiver.
- Connect the equipment into an outlet on a circuit different from that to which the receiver is connected.
- Consult the dealer or an experienced radio/TV technician for help. Changes or modifications not expressly approved by HAVIT could void the user's authority to operate this equipment.

This device complies with part 15 of the FCC Rules and with Industry Canada license-exempt RSS standard(s). Operation is subject to the following two conditions: (1) This device may not cause harmful interference, and (2) this device must accept any interference received, including interference that may cause undesired operation.

This device complies with FCC and Industry Canada radiation exposure limits set forth for general population. It must not be co-located or be operating in conjunction with any other antennas or transmitters. Any Changes or modifications not expressly approved by the party responsible for compliance could void the user's authority to operate the equipment.

CE HAVIT hereby declares that this product is in compliance with the essential requirements and other relevant provisions of Directive 2014/53/EU 2014/53/EU and other applicable EU directive requirements.

For Europe:  
 Frequency band of operation 2400 to 2483.5 MHz:  
 - Bluetooth: Maximum transmit power less than 20 dBm ERP.  
 - Bluetooth Low Energy: Maximum power spectral density less than 10 dBm/MHz ERP.  
 DONT attempt to remove the rechargeable Lithium-ion battery from this product. Contact your local HAVIT retailer or other qualified professional for removal.  
 Please dispose of used batteries properly, following local regulations. Do not incinerate.

This symbol means the product must not be discarded as household waste, and should be delivered to an appropriate collection facility for recycling. Proper disposal and recycling helps protect natural resources, human health and the environment. For more information on disposal and recycling of this product, contact your local municipality, disposal service, or the shop where you bought this product.



www.havitsmart.com