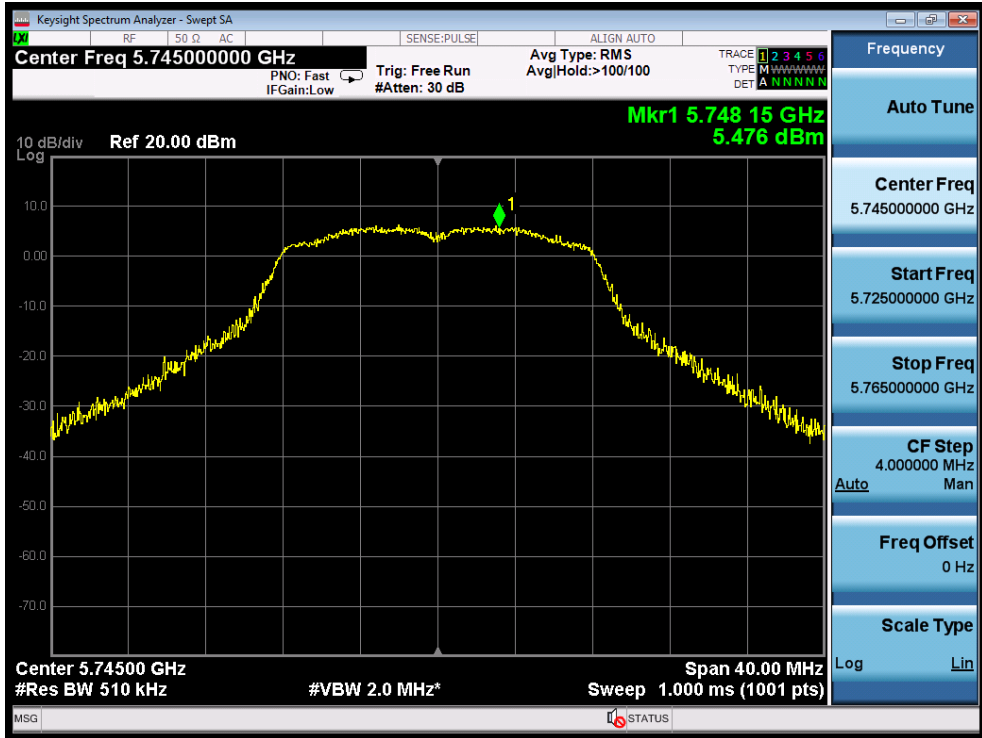
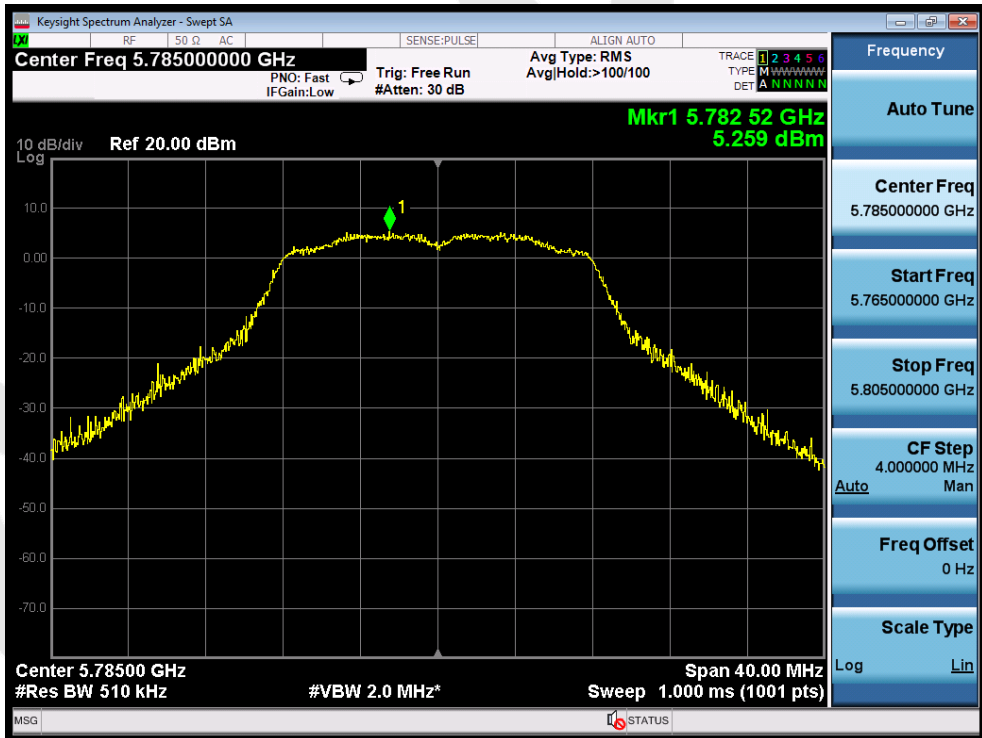


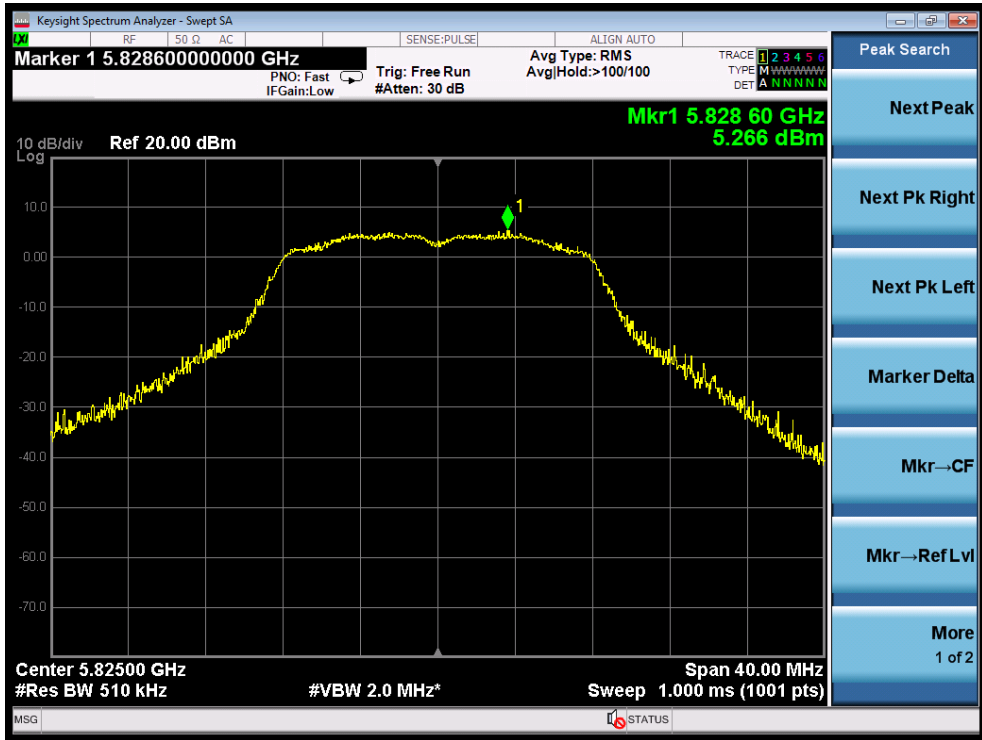
ANT 2



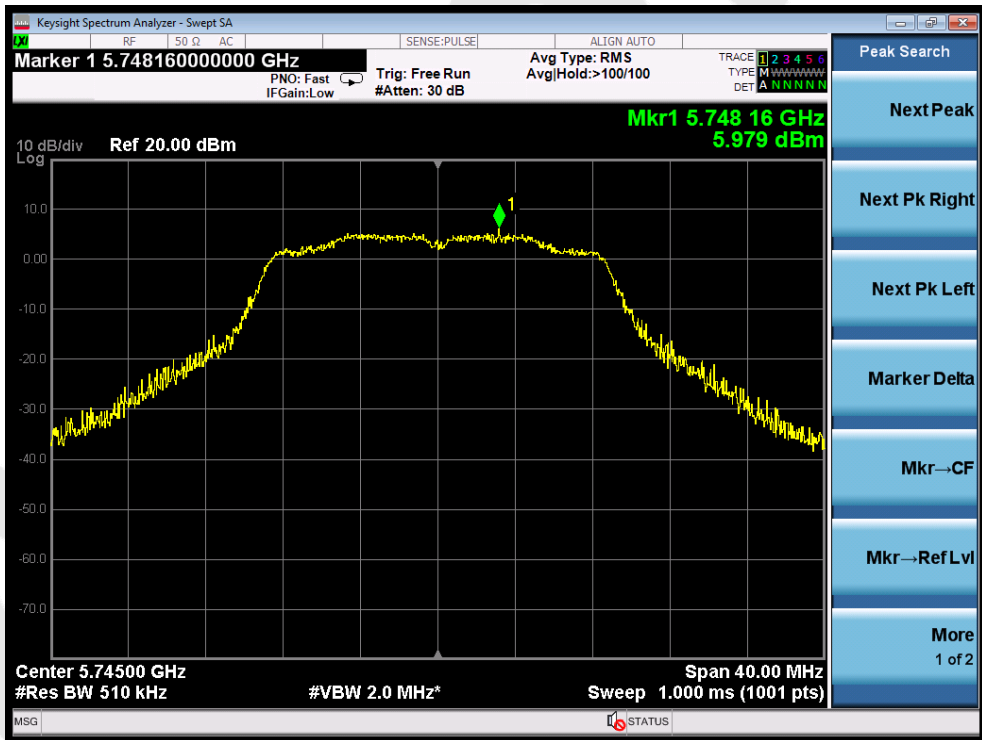
Test Mode: 802.11a--Low



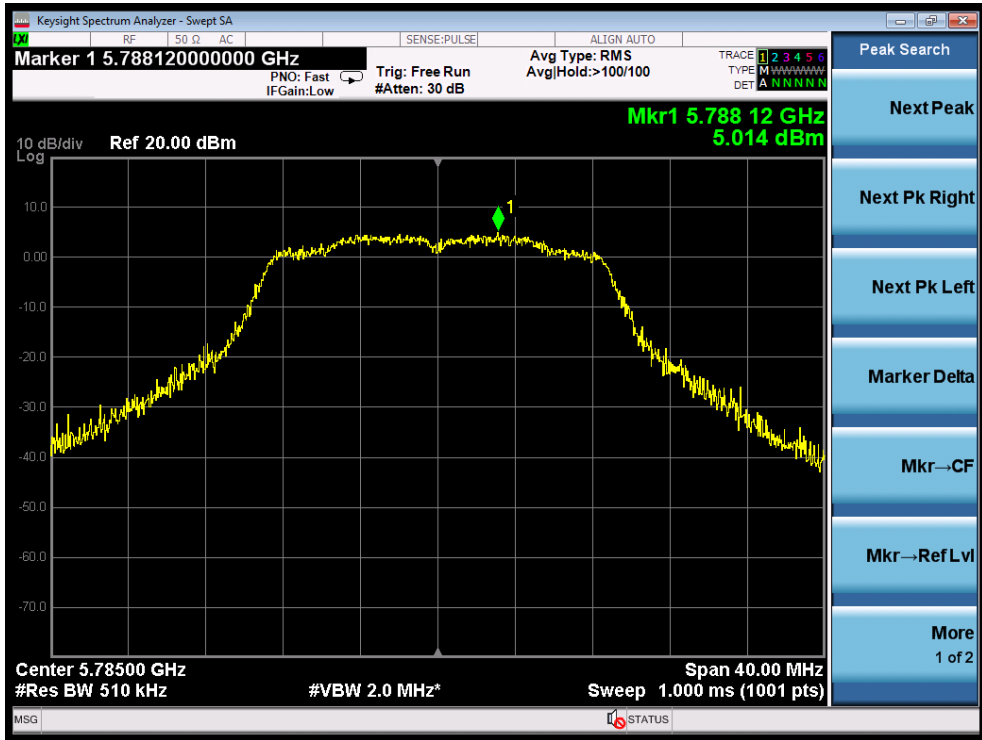
Test Mode: 802.11a---Middle



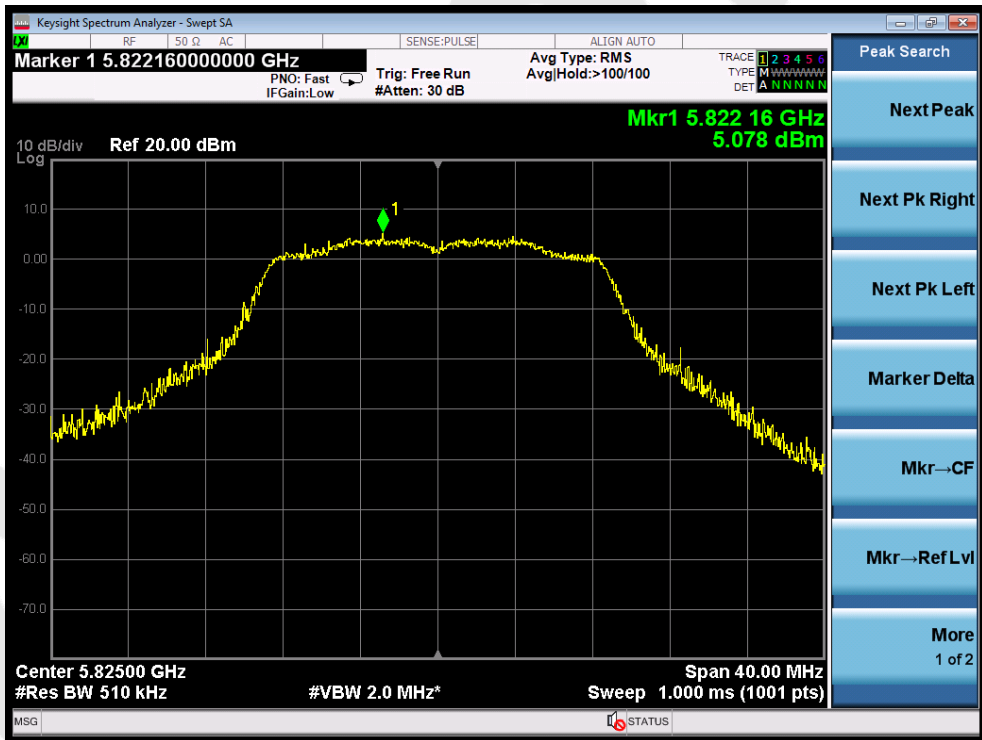
Test Mode: 802.11a---High



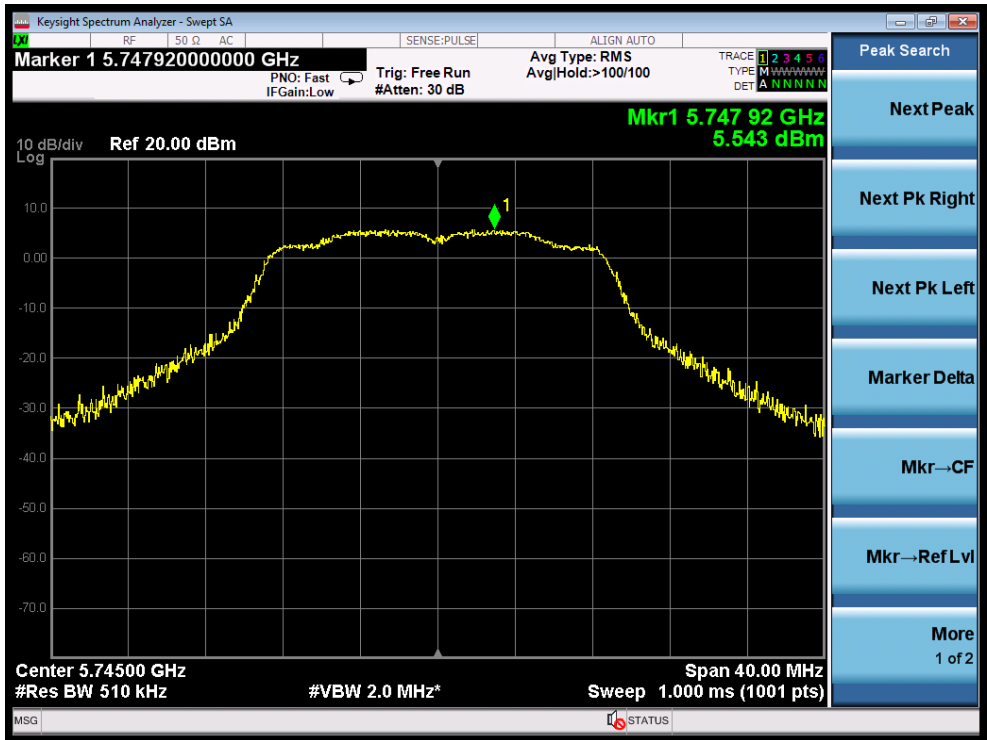
Test Mode: 802.11n20---Low



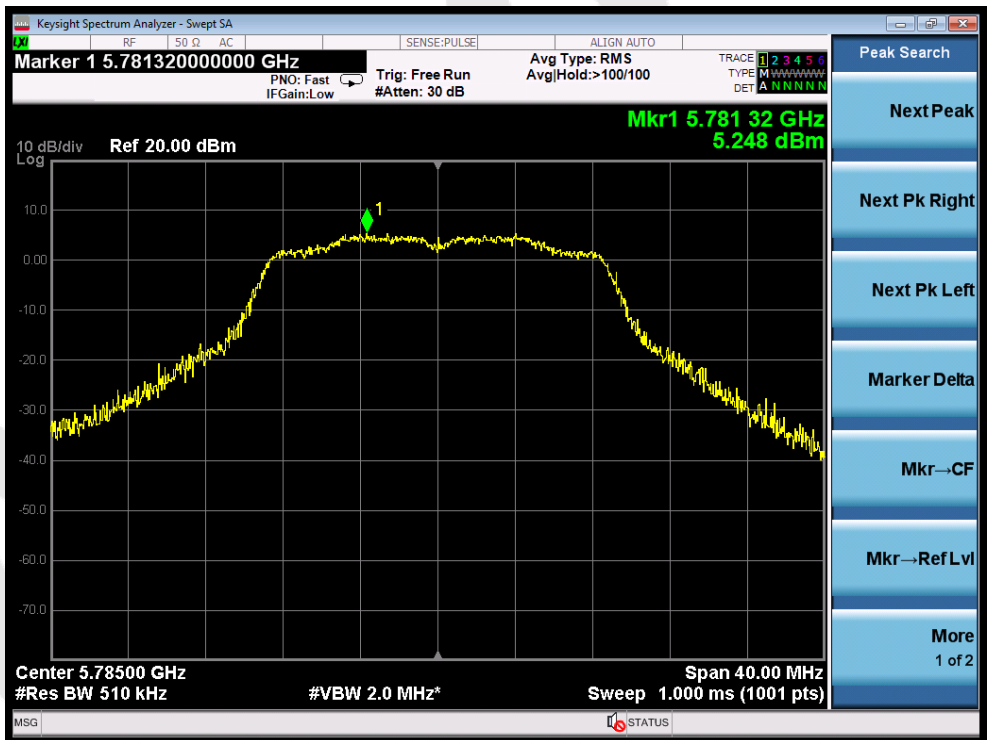
Test Mode: 802.11n20---Middle



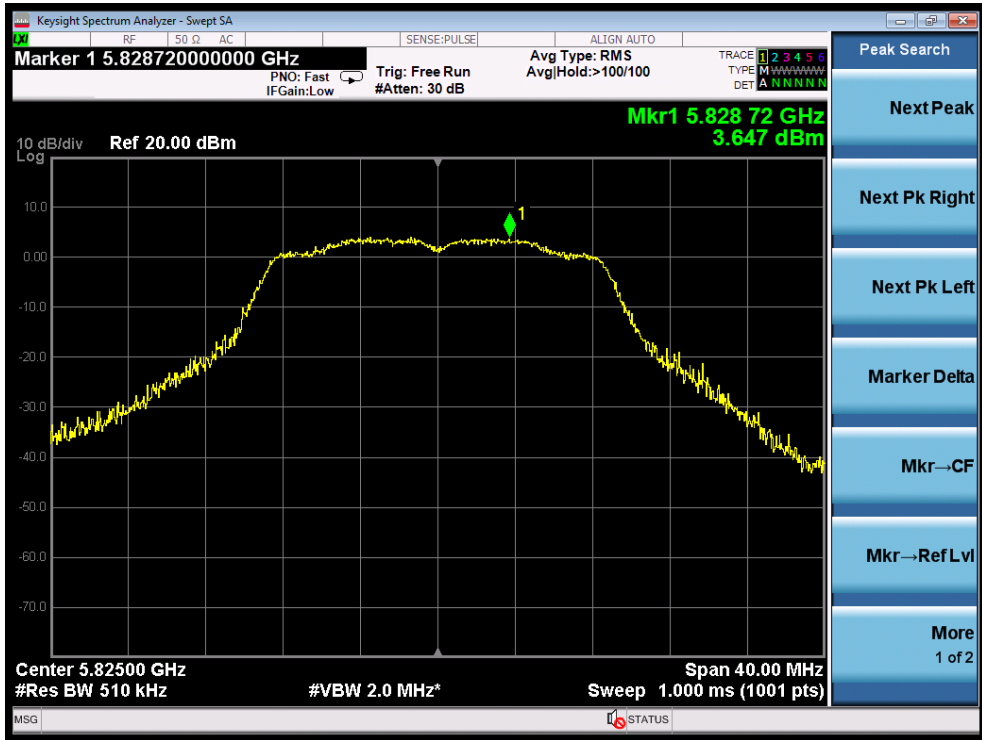
Test Mode: 802.11n20---High



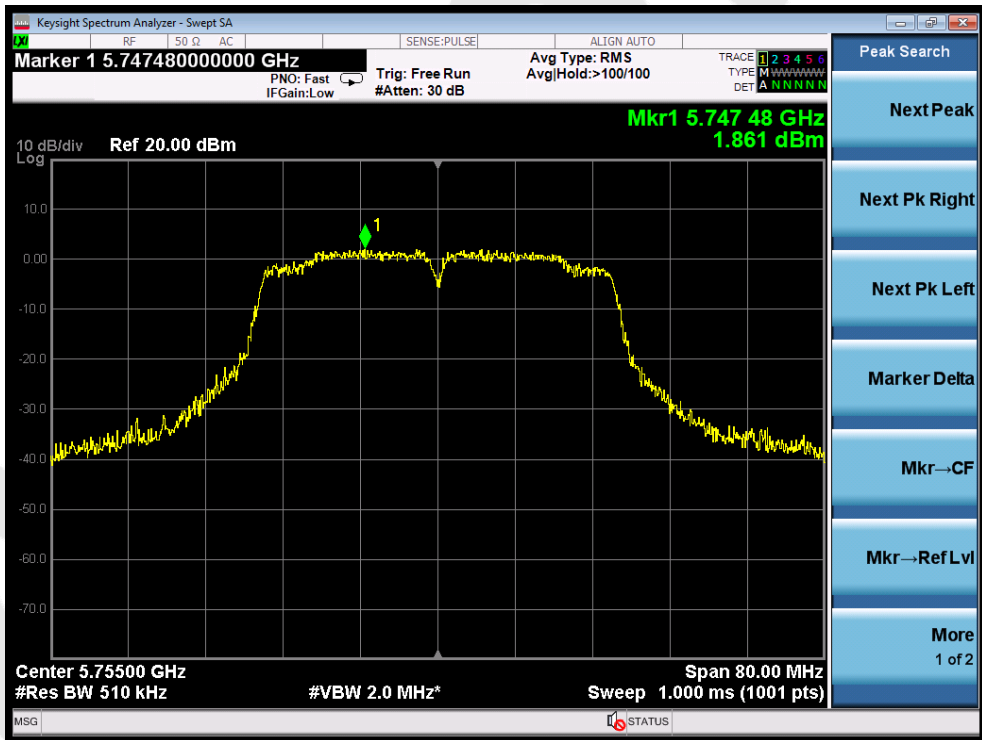
Test Mode: 802.11ac20--Low



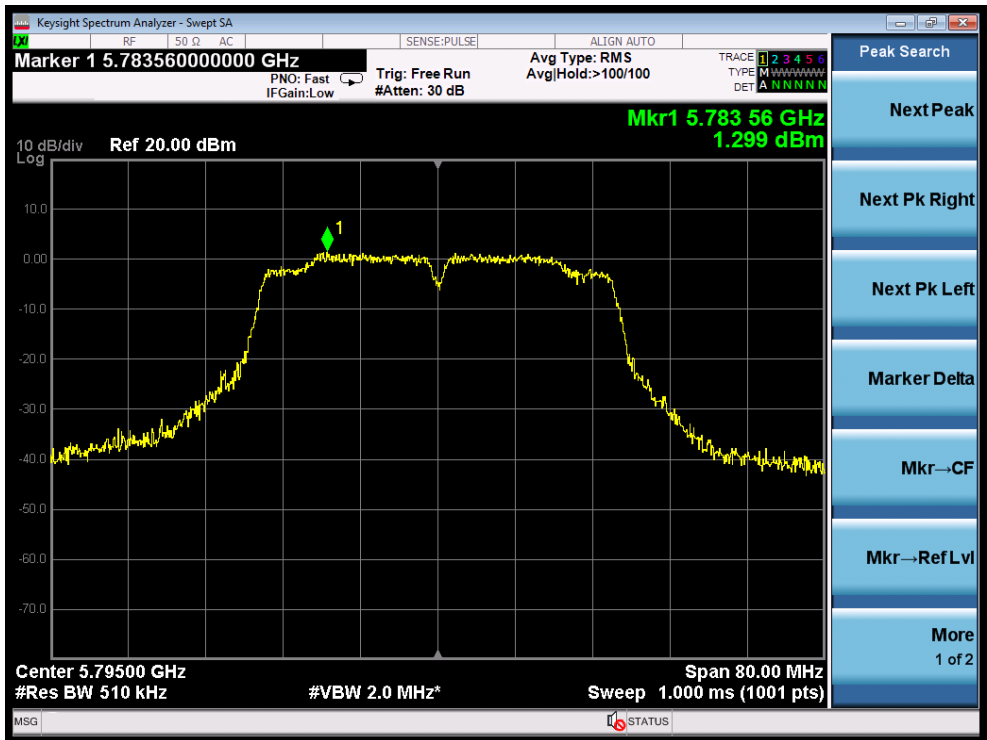
Test Mode: 802.11ac20--Middle



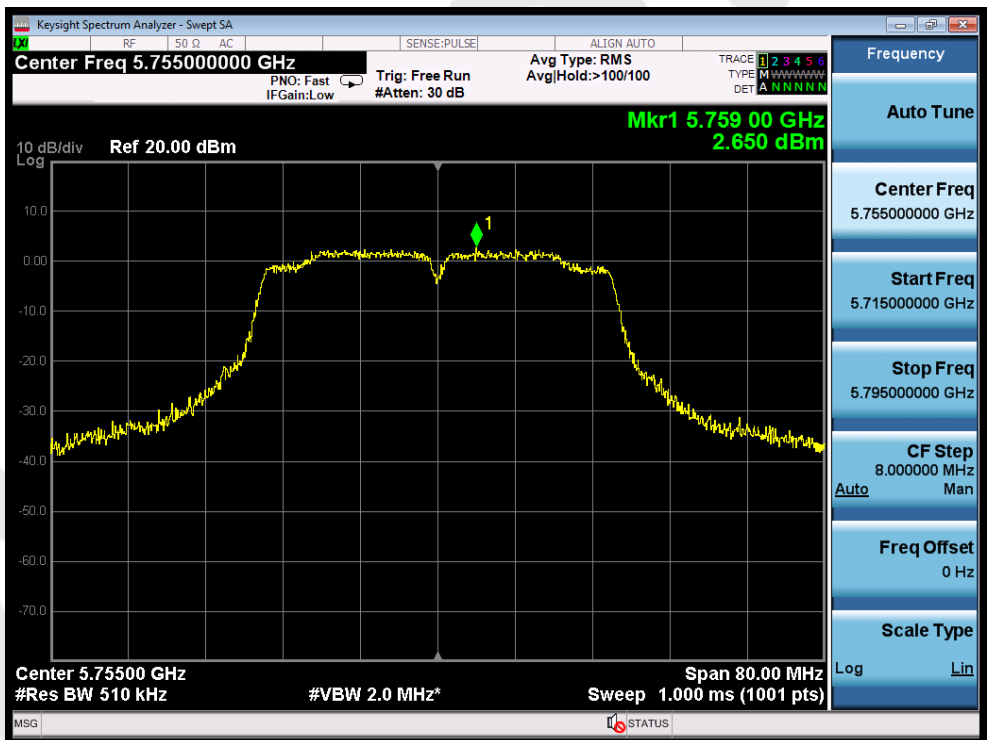
Test Mode: 802.11ac20---High



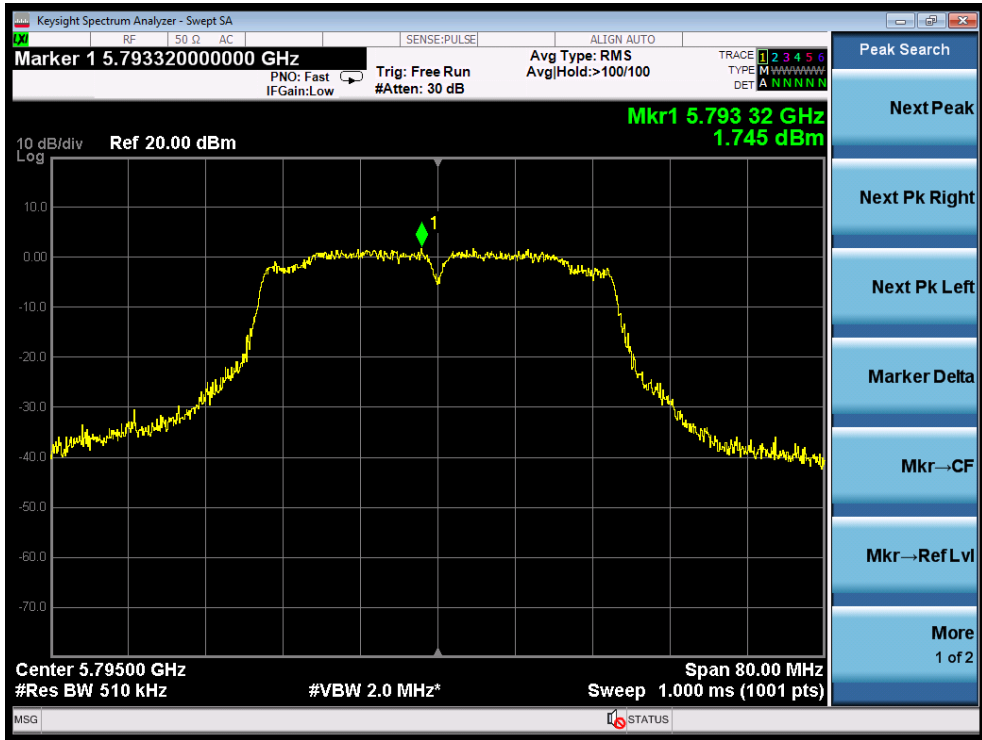
Test Mode: 802.11n40---Low



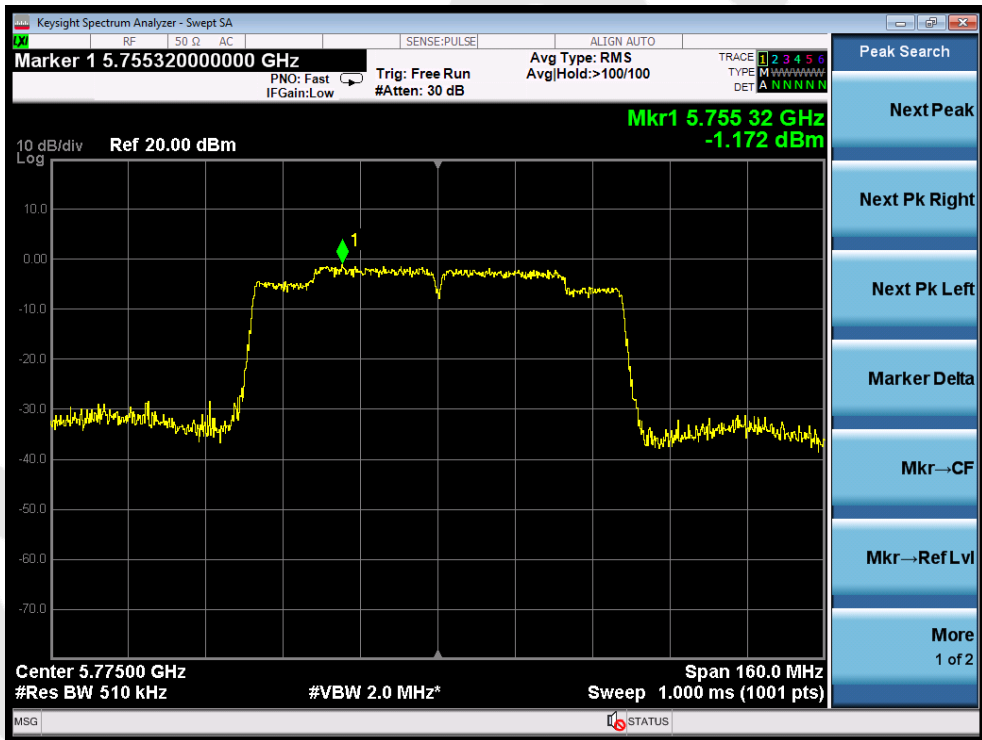
Test Mode: 802.11n40---High



Test Mode: 802.11ac40---Low



Test Mode: 802.11ac40---High



Test Mode: 802.11ac80

8. Antenna Requirement

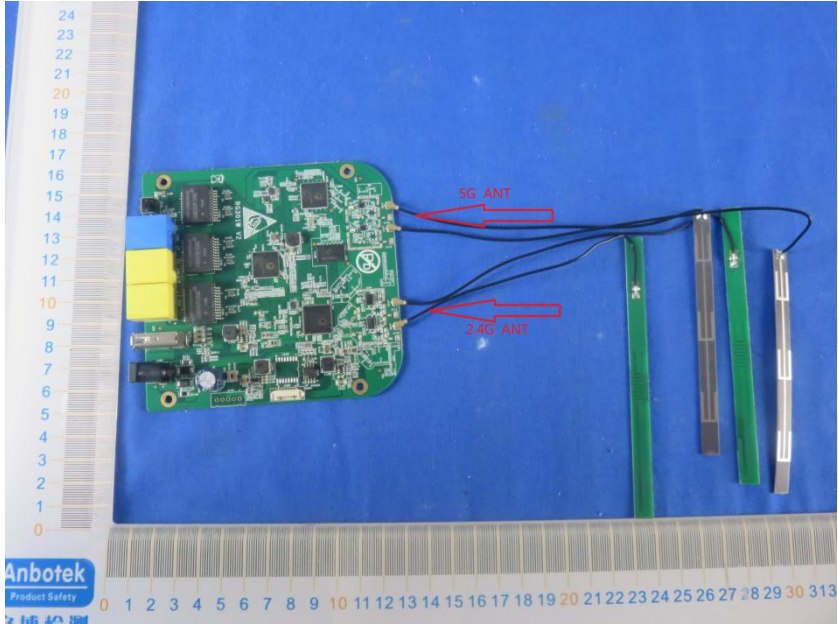
8.1. Test Standard and Requirement

Test Standard	FCC Part15 Section 15.203 /15.407
Requirement	<p>1) 15.203 requirement: An intentional radiator shall be designed to ensure that no antenna other than that furnished by the responsible party shall be used with the device. The use of a permanently attached antenna or of an antenna that uses a unique coupling to the intentional radiator, the manufacturer may design the unit so that a broken antenna can be replaced by the user, but the use of a standard antenna jack or electrical connector is prohibited.</p> <p>2) 15.407 requirement: An intentional radiator shall be designed to ensure that no antenna other than that furnished by the responsible party shall be used with the device. The use of a permanently attached antenna or of an antenna that uses a unique coupling to the intentional radiator shall be considered sufficient to comply with the provisions of this section. The manufacturer may design the unit so that a broken antenna can be replaced by the user, but the use of a standard antenna jack or electrical connector is prohibited. This requirement does not apply to carrier current devices or to devices operated under the provisions of §15.211, §15.213, §15.217, §15.219, or §15.221. Further, this requirement does not apply to intentional radiators that must be professionally installed, such as perimeter protection systems and some field disturbance sensors, or to other intentional radiators which, in accordance with §15.31(d), must be measured at the installation site. However, the installer shall be responsible for ensuring that the proper antenna is employed so that the limits in this part are not exceeded.</p>

8.2. Antenna Connected Construction

The WIFI antenna is an Internal antenna (2X2 MIMO) which permanently attached, and the best case gain of the antenna is 7dBi each antenna (It is reduced power treatment). It complies with the standard requirement.

WIFI Antenna



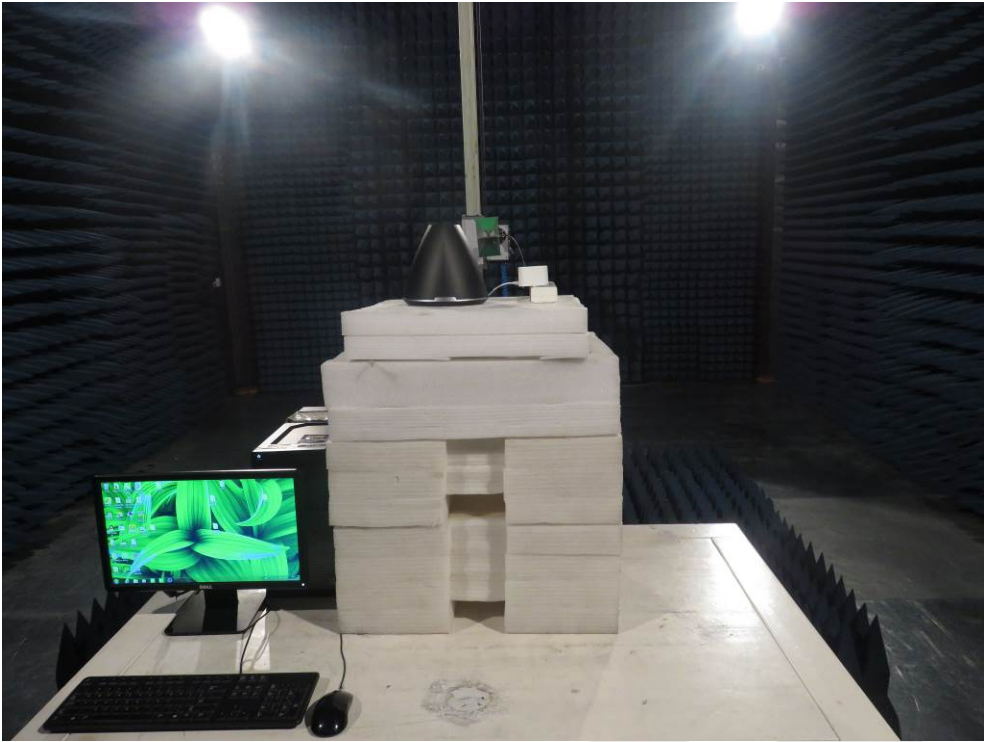
APPENDIX I -- TEST SETUP PHOTOGRAPH

Photo of Conducted Emission Measurement



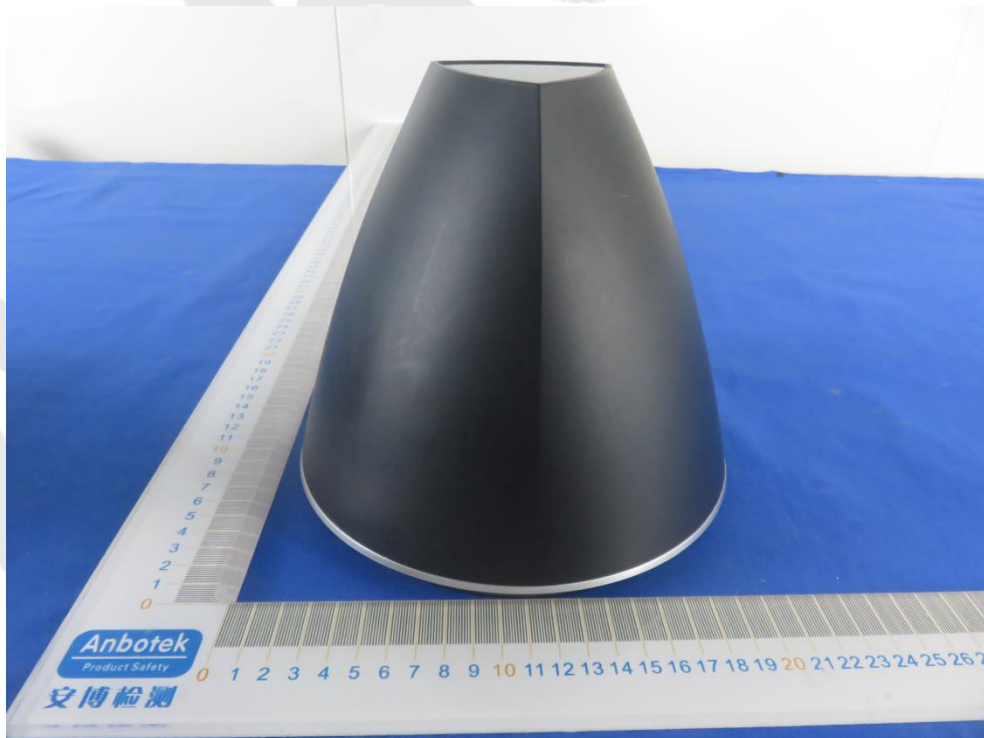
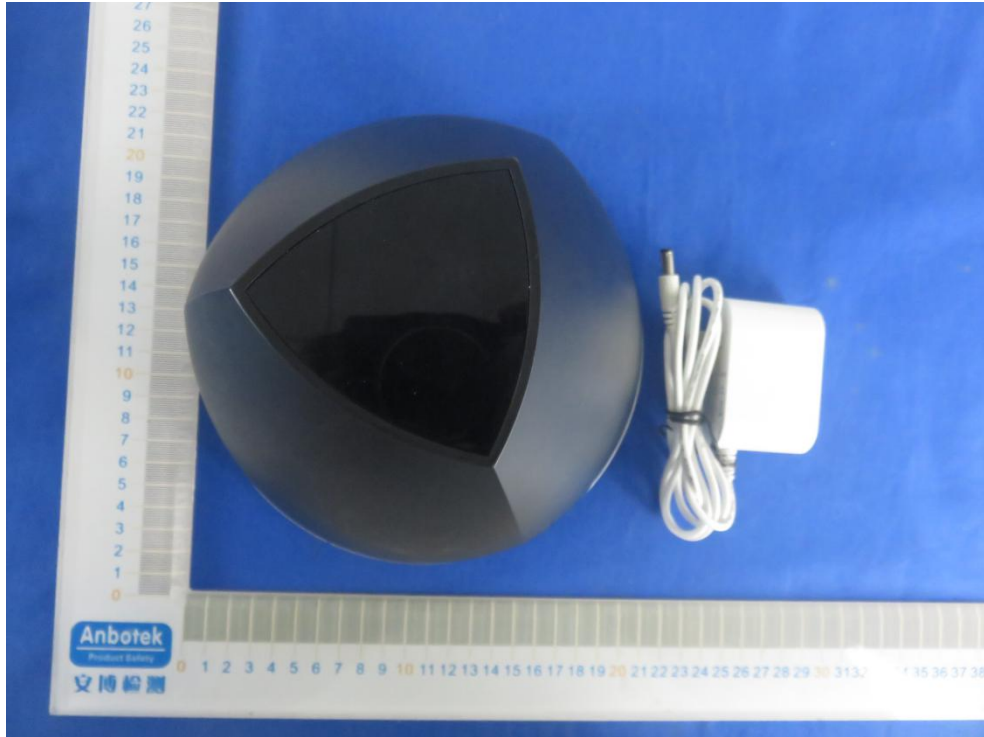
Photo of Radiation Emission Test

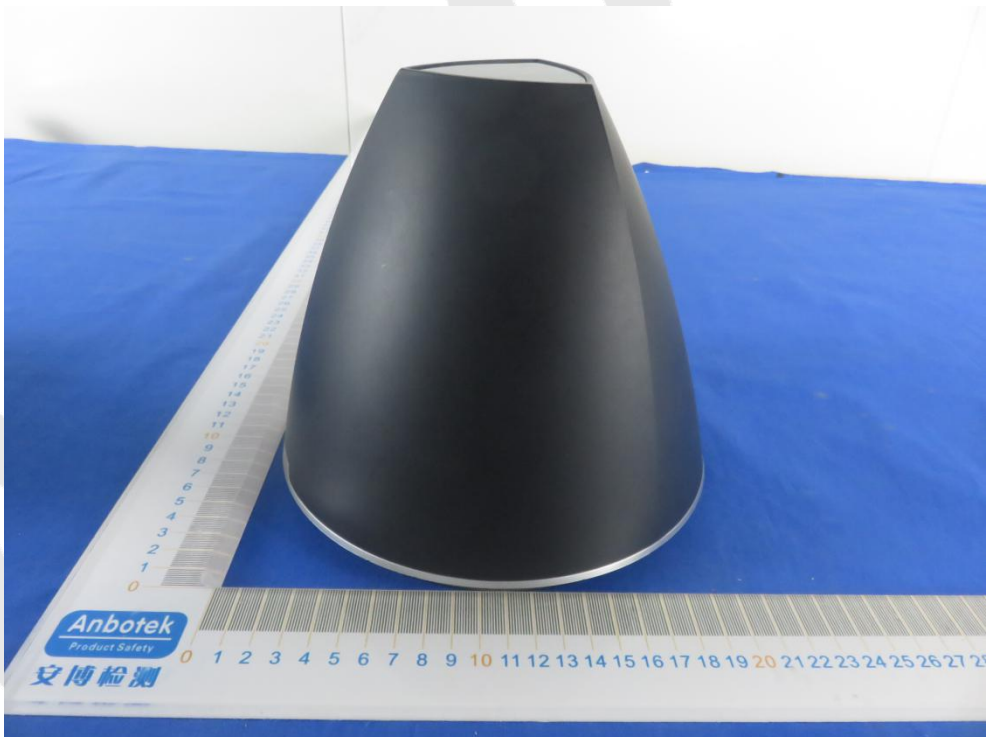
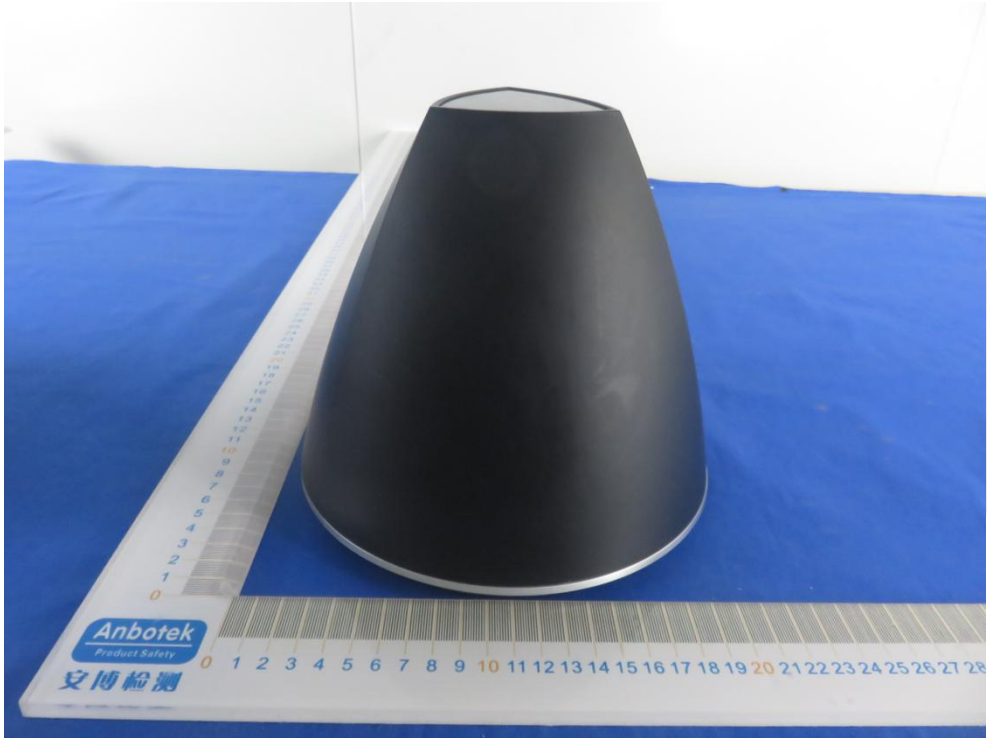


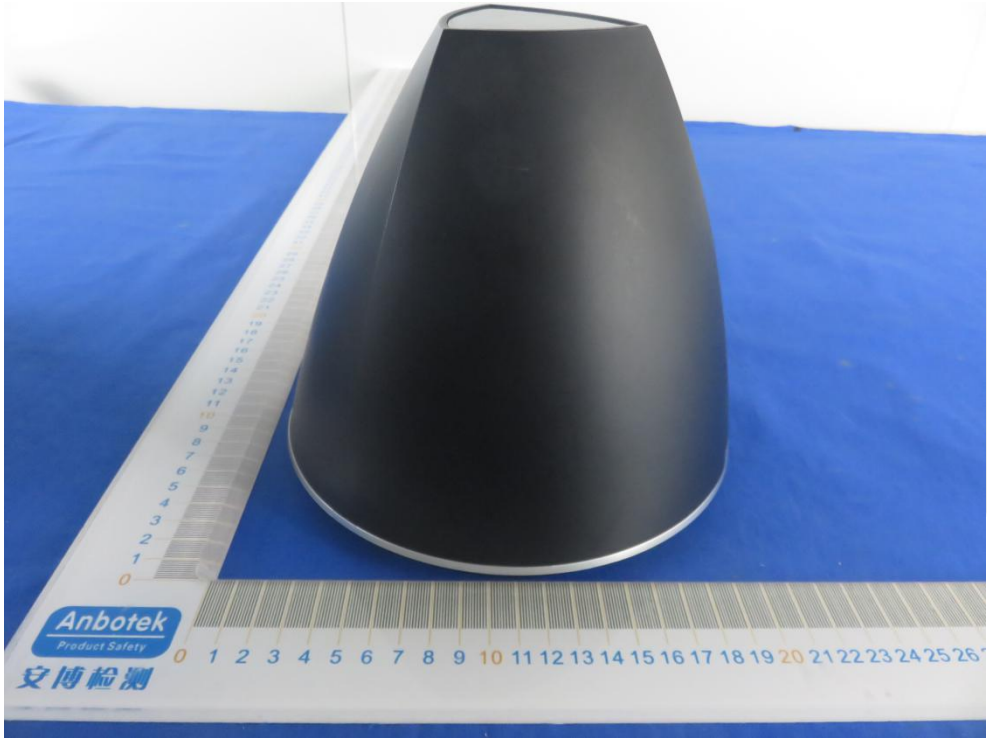


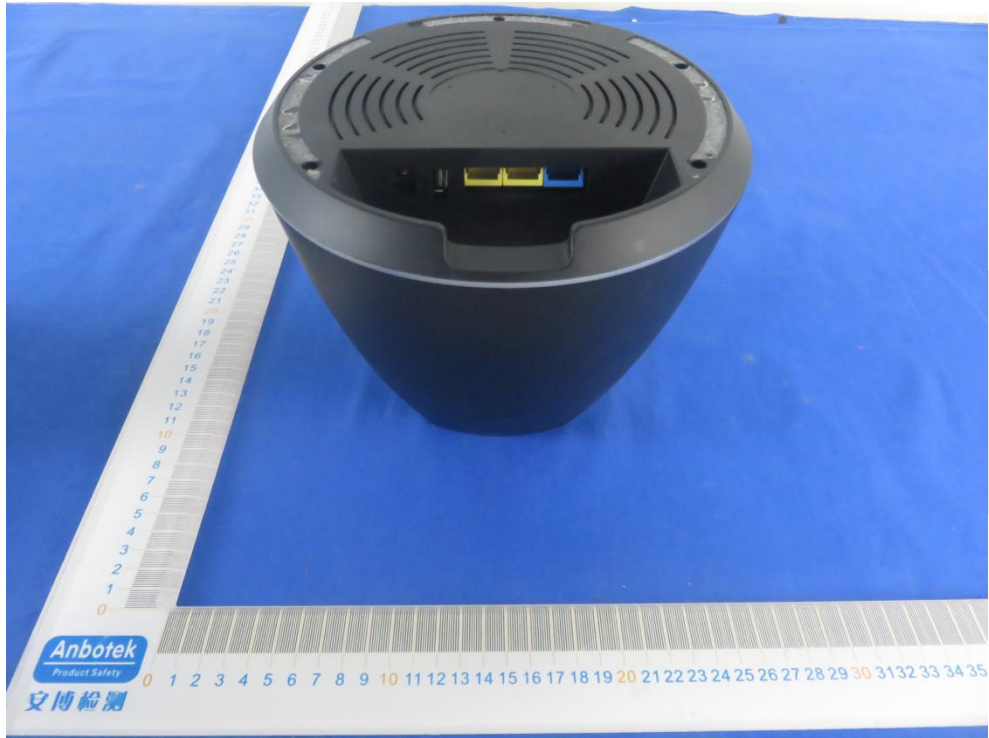
Anbotek

APPENDIX II -- EXTERNAL PHOTOGRAPH

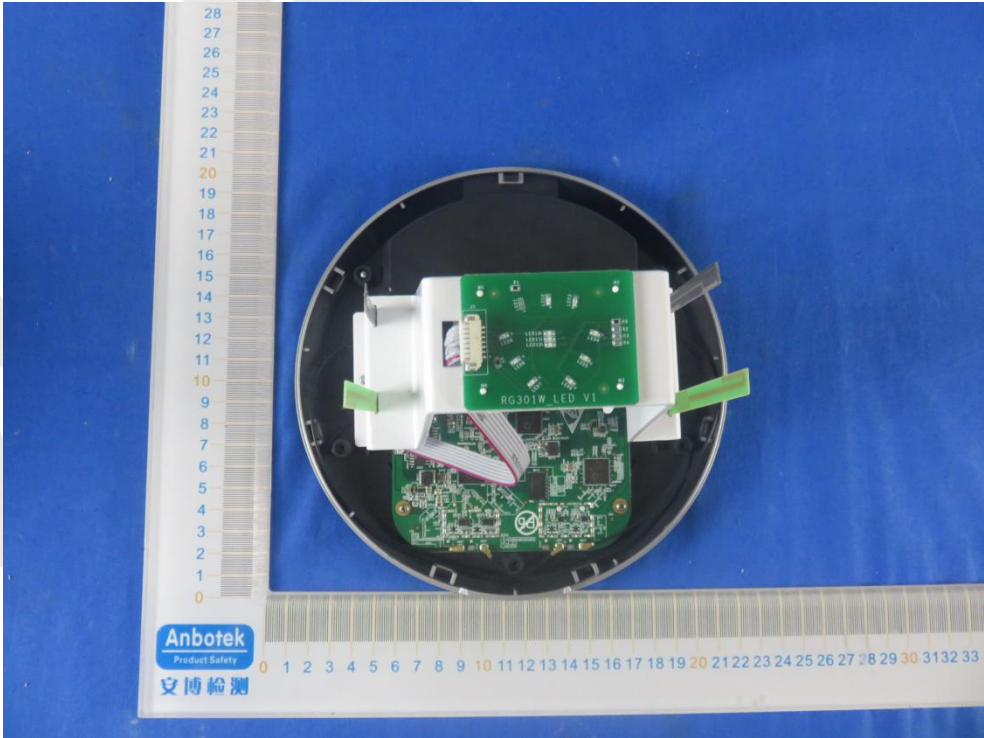


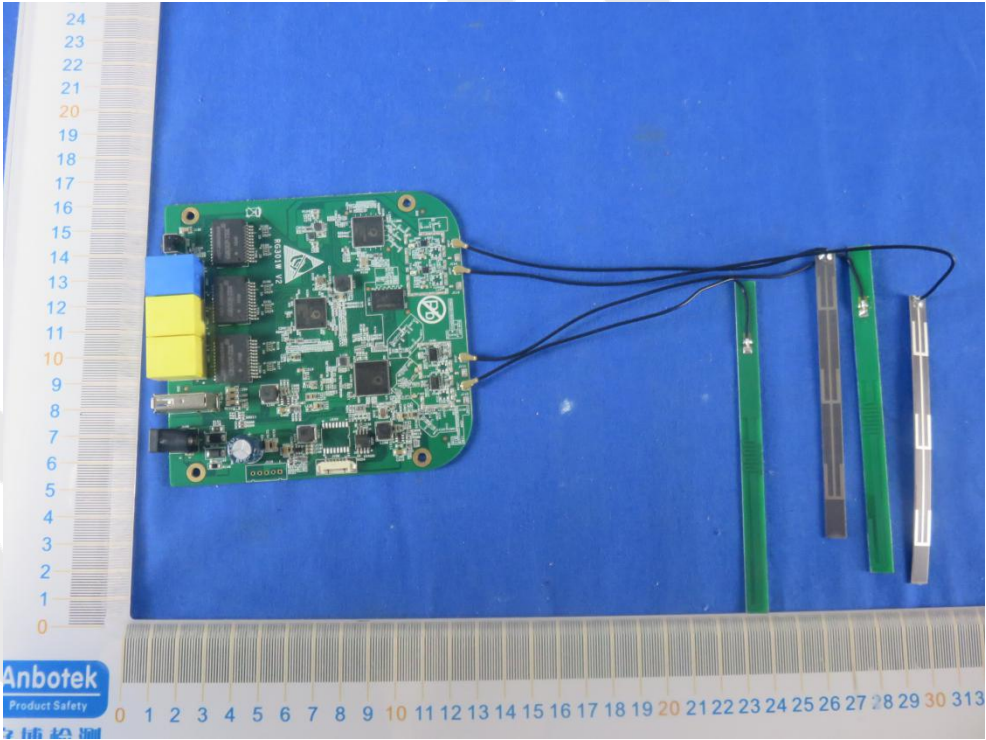
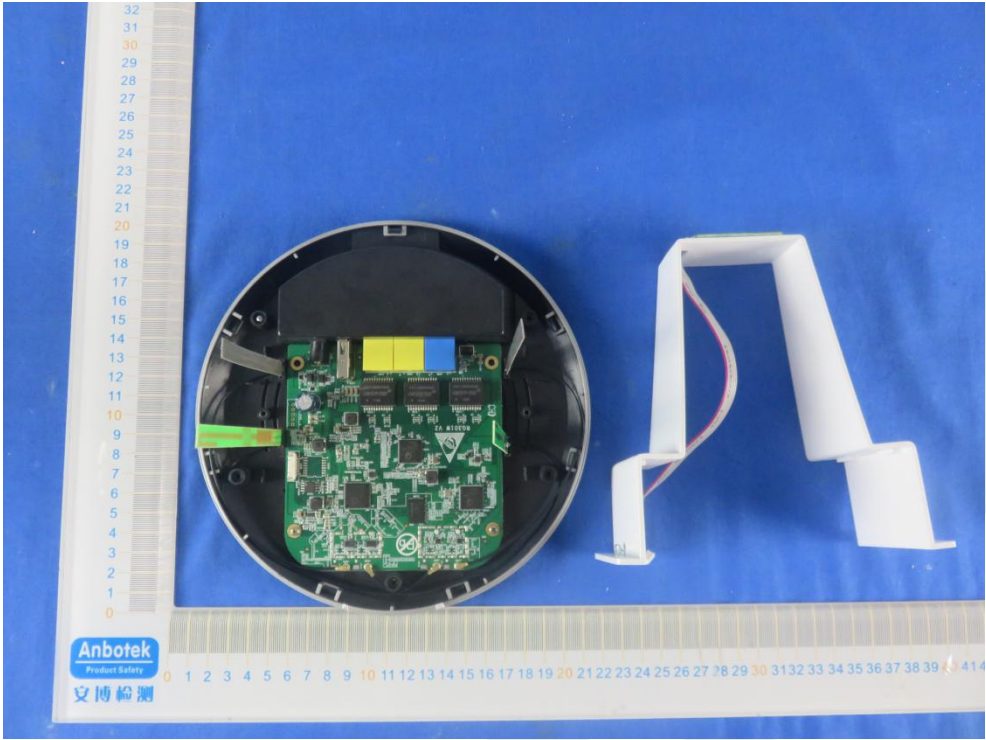


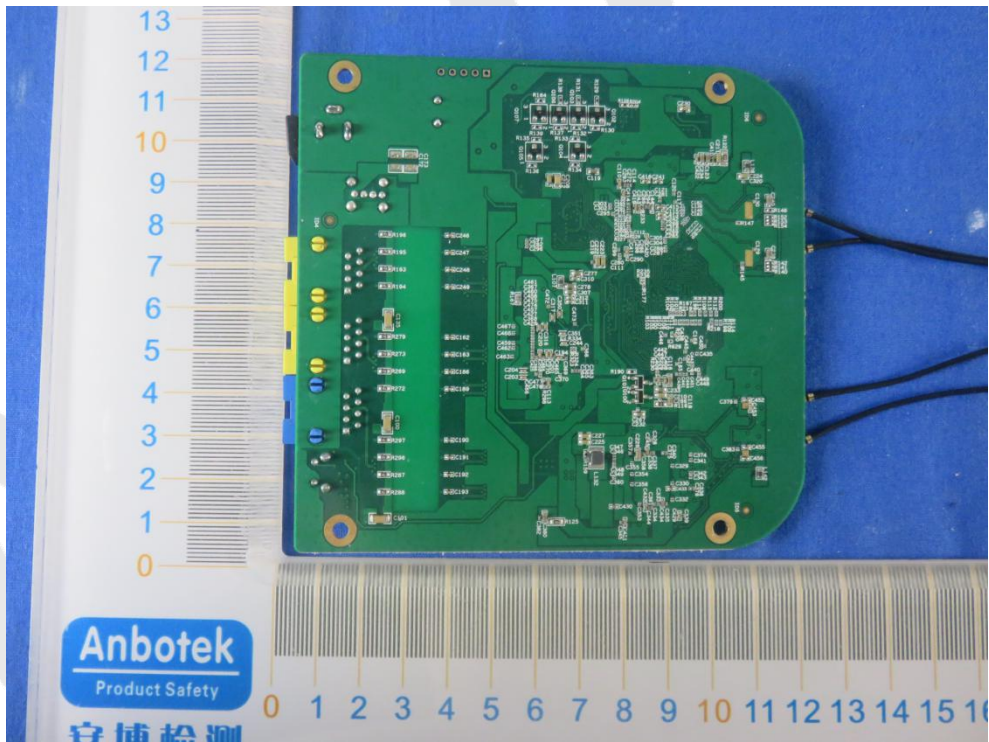
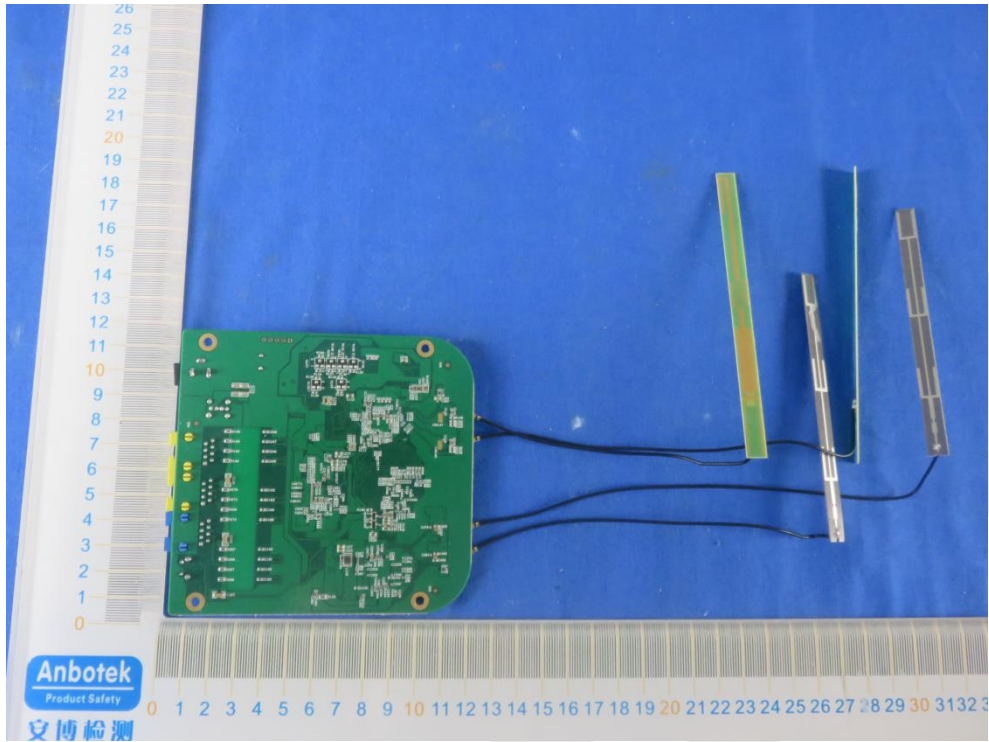


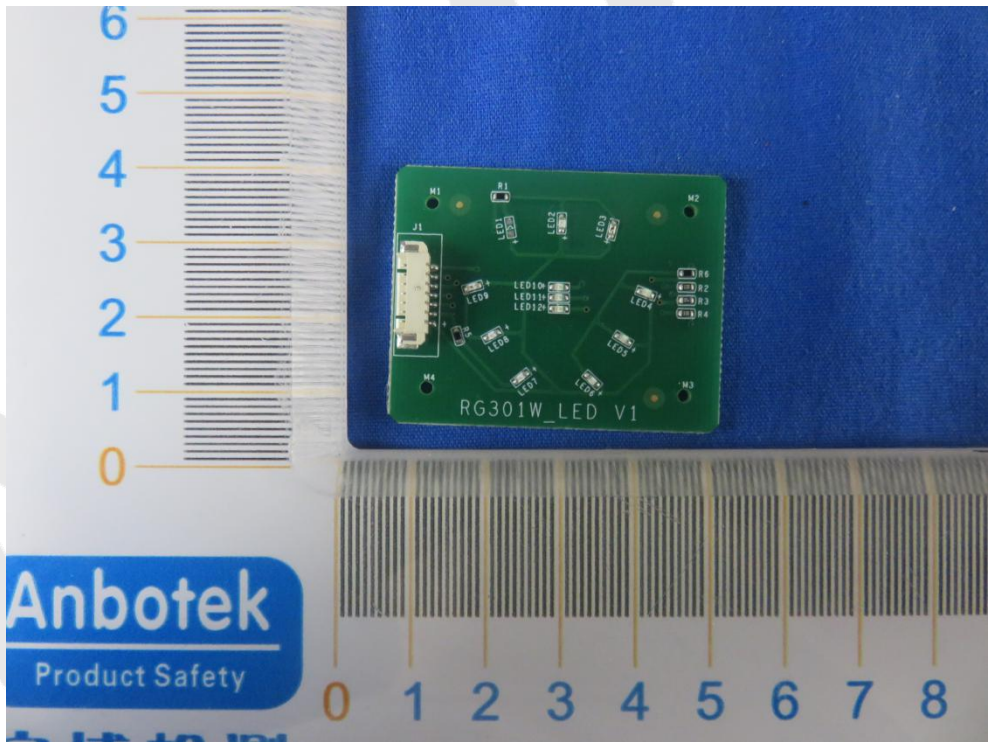
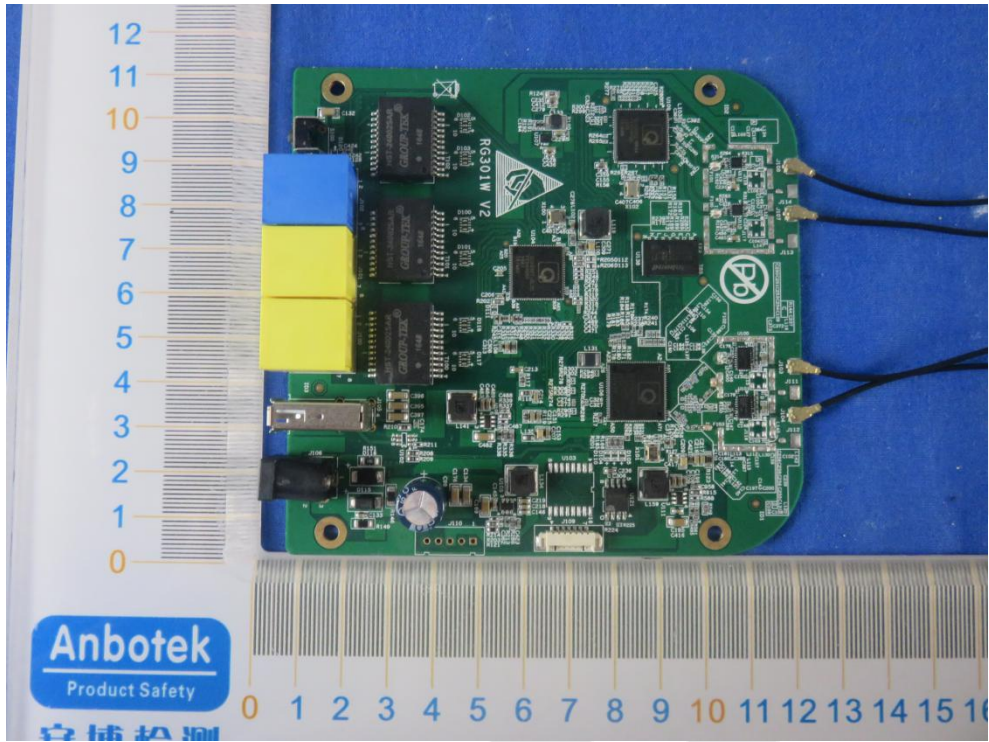


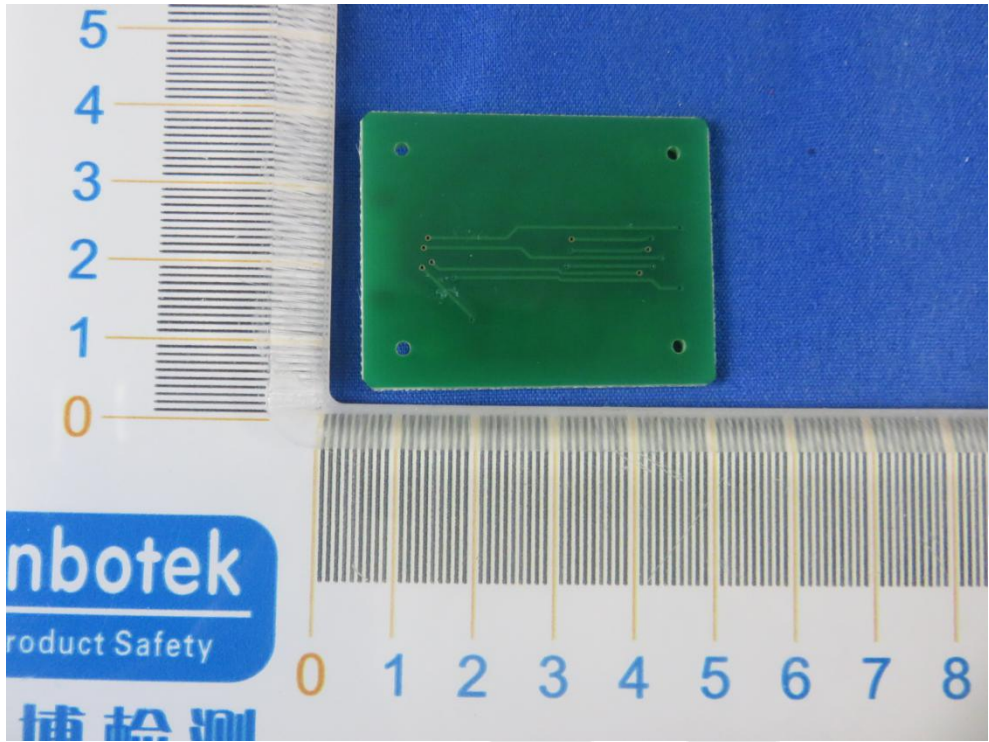
APPENDIX III -- INTERNAL PHOTOGRAPH











Anbotek