

Smart String Light User Manual



English

Smart LED RGBCW String light User manual

Thank you for choosing us. To optimize users' experience, please use the string light according to the following instruction.

Warning

- (1) Please check if the string light is intact before installation.
- (2) Make sure to cut off power before installation.
- (3) Please do not place this light in corrosive conditions.
- (4) If there is any damage on the cord, please cut off the power and stop using it immediately.
- (5) Please do not retrofit the light within the warranty period.
- (6) To ensure the light works properly, please use the voltage indicated on the packing.
- (7) Please do not use chemical solvent during routine maintenance.

1.Package List

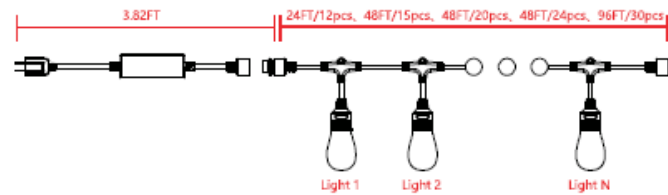
Led string Light	1pcs
User manual	1pcs
Cable ties	A few

2.Specification

Color	RGBCW
Input Voltage	AC100-240V 50/60Hz
Waterproof Level	IP65
Controlled By	Alexa, Google Assistant
Lifespan	50000H
Working Temperature	-20°--40°

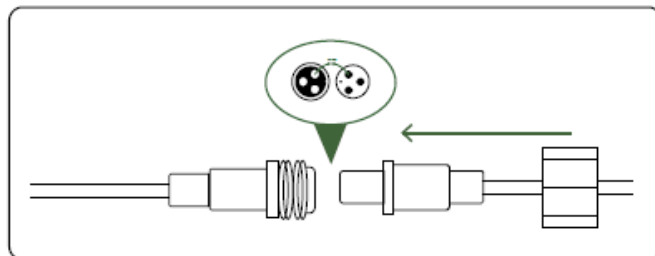
English

3.Size



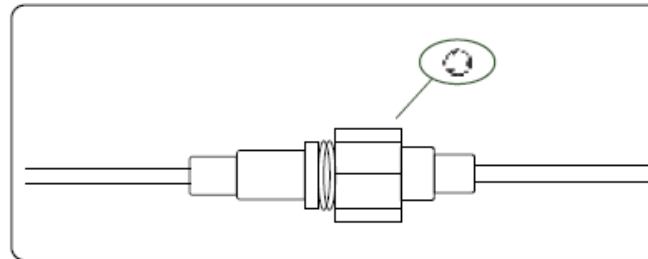
4.Initial Setup

Step 1: Connect string lights as indicated in the picture.



English

Step 2: Firmly screw the wire nut.



Step 3: Power on.



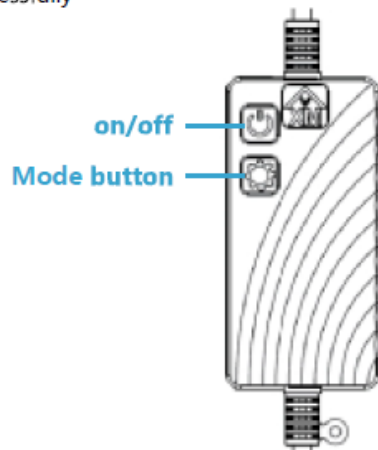
Before installing, plug the smart string lights into an outlet to check if all lights work properly.

Before hanging up, please test to confirm the smart string lights can be connect to the APP.

Note: Please unplug the smart string lights before mounting.

5. Touch button operation instructions:

1. Switch button: short press the switch and long press the network for more than 5S
2. Mode button: Press to switch mode, including red, green, blue, yellow, purple, white, warm seven colors, flashing seven colors, gradual change seven colors, breathing three colors, flowing water In static color mode, changan adjusts brightness. For dynamic magic mode, hold down to adjust speed
3. Lock and unlock:
Lock: If there is no operation after 180S, touch button automatically lock, touch failure;
Unlock: Hold down the mode button for 5S, and the red light will blink once. Then hold down the switch button for 5S, and the red light will blink twice, and unlock. Any interruption of long pressing or disordering of touches will require a re-operation to unlock. The device is unlocked each time it is powered on or configured successfully



Smart String Light User Manual

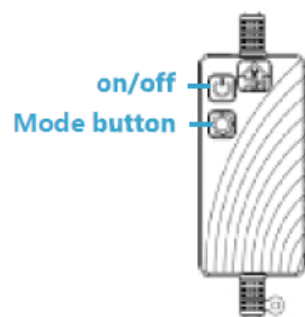
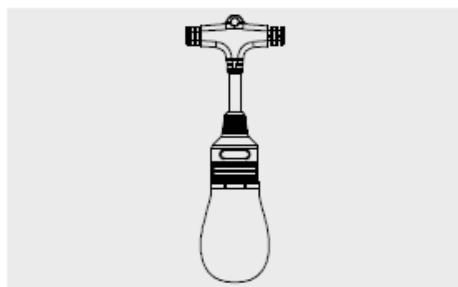


Please read this manual carefully before using

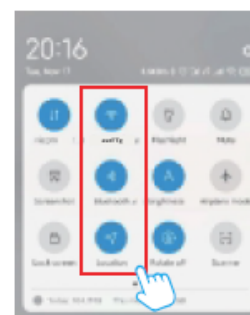
Before going to next steps, please download the APP by scanning above code or simply search keywords: " Smart Life" in the APP Store or Google Play

I -Add devices in Smart Life APP

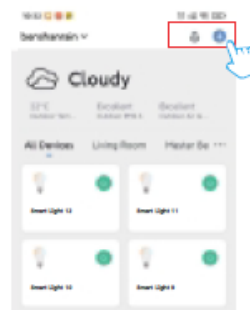
1. Turn the switch ON/OFF/ON/OFF/ON, or press the on/off button for more than 8 s before the lights work for 3 minutes. The device will blink to get ready for network connection.



1. Make sure your mobile device is connected to your home WiFi(2.4 Ghz only).
3. Enable Location setting on the mobile device.



4. Go to "Smart Life" APP and login with your account, click+ on the upper right corner.



English

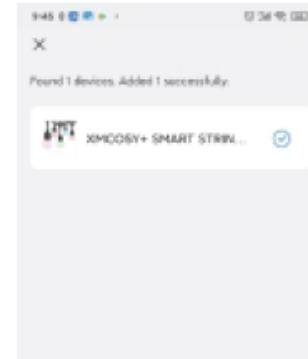
5. A window will pop up and click "Go to add", if no pop-up window, please click "Auto Scan" on the top middle screen.



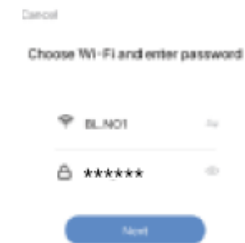
8

English

6. Select the device in the list you want to connect and click "+" (select to connect one by one, not support on multi-device selected).



7. Input the "Password" of your home wifi and click "Confirm" on pop up window.



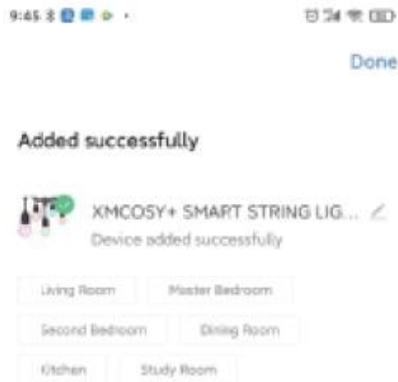
9

English

8. Wait till the pairing process complete and click "Done" on the right top corner, it will go to the manage page of this device (If there are multi devices which are ready for network connection, it will go back to the device list when you click "Done" .)

Tips:

- The name you gave to the device will be used again when pair to Amazon Alexa & Google home for voice control please do keep it in mind.
- The device name is suggested to be consist of English word and Arabic numerals, please do not use special characters.



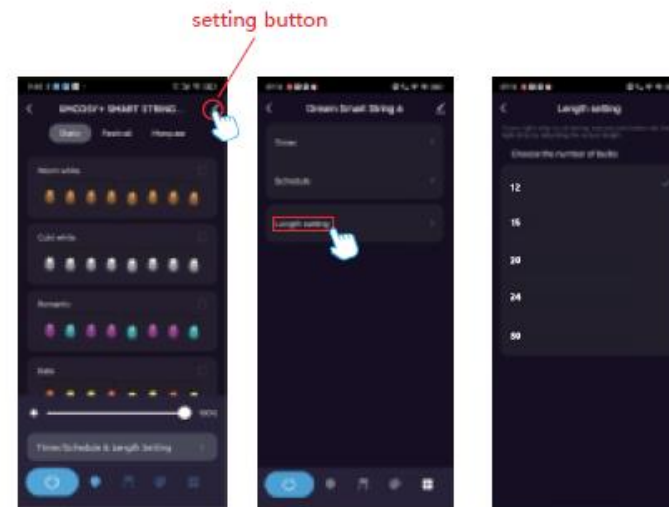
10

English

II-Control the device in Smart APP

1. Length setting

Click the "setting button" on the upper right corner and click the "Length setting" button. Choose the number of bulbs what you have purchased. Here we choose "15" .

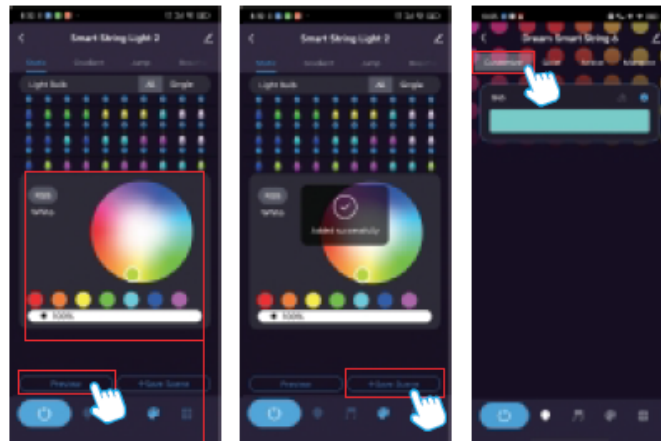


11

English

2. Color adjustment

- Choose the color what you like, then click the "Preview" button to see the effect you have set.
- If you click the "Save Scene", the scene you have chose will be saved on the Customize page as shown in the picture.



adjust color

12

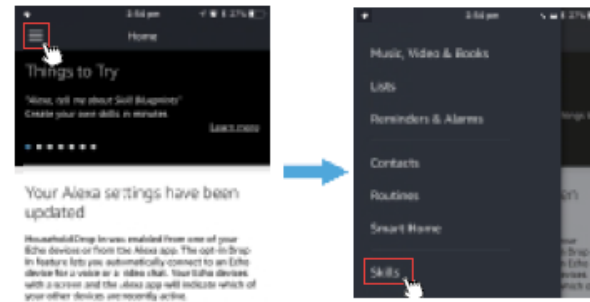
English

III-How to control the light with Amazon Alexa?

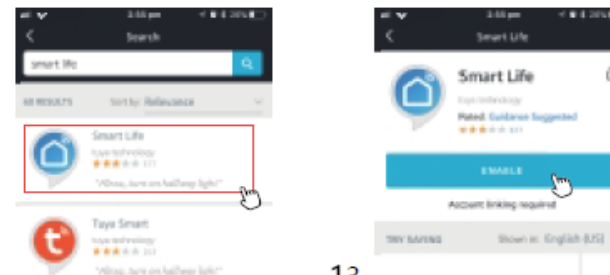


Please make sure that your Alexa app is connected to Echo, and both work well under your WiFi network.

Step A: Log in your Alexa App, tap top left corner, and tap "Skills".



Step B: Type "Smart Life", find "Smart Life" from the search result and tap it to enable the skill.

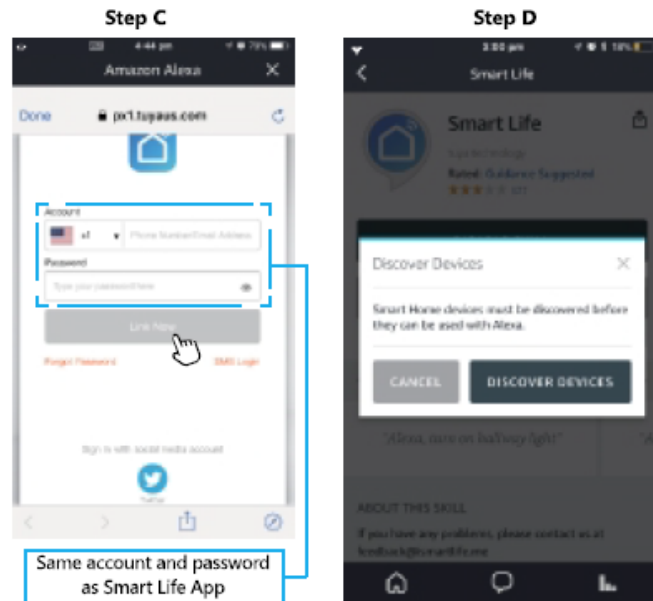


13

English

Step C: Enter your Smart Life App account and password. Tap “Link Now”, then tap “Authorize” on the next page to bind Smart Life account to Alexa.

Step D: When your Smart Life account is bound to Alexa, tap “DISCOVER DEVICES” to detect the light.

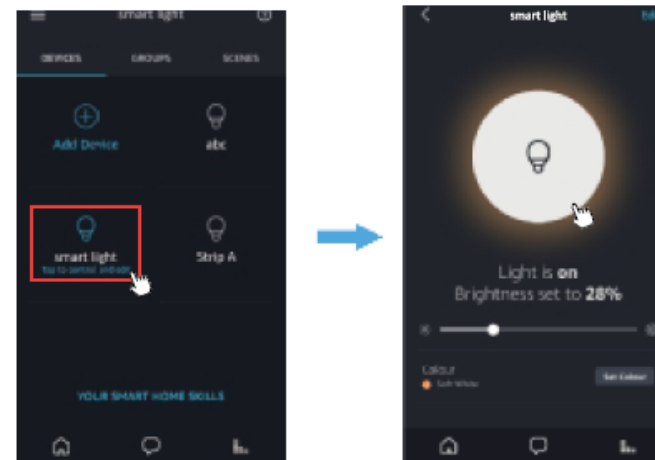


Step E: When the named light is paired to Alexa from Smart Life, it will show on the device page (see the “smart light” example).

English

Step F: Now you can control the light with Alexa App on the setting page. To turn on or off the light, simply tap the bulb icon.

Step G: You can also voice control the light with Alexa by giving these com-mands: “Alexa, turn on ‘device name’”, “Alexa, set ‘device name’ to ‘color’”, “Alexa, set ‘device name’ to ‘number’”. Device name is the one you give to the light, The light is named ‘smart light’ in this user guide. For example, “Alexa, turn on ‘smart light’”, “Alexa, set smart light’ to ‘blue’” etc.



Note: To control the light with Google Assistant, please continue to read Part Four.

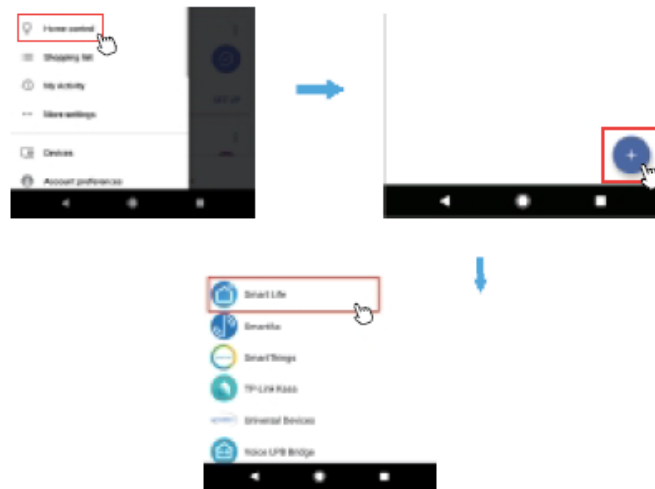
IV-How to control the light with Google Assistant?



Step A: Login Google Assistant App, tap "Home Control" on the left side bar page.

Step B: Tap "+" button on the bottom right to enter next page.

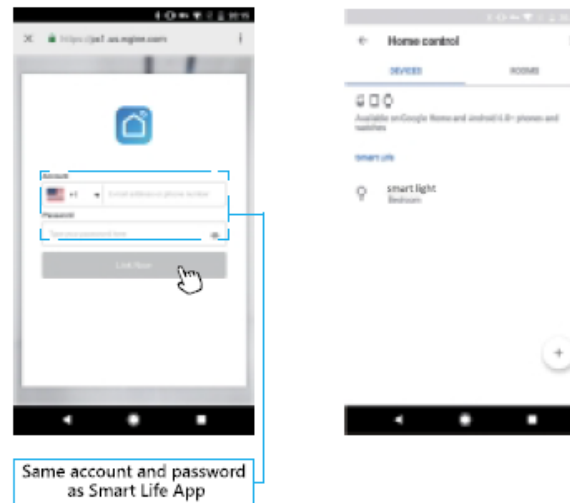
Step C: Find "Smart Life" form side bar list.



Step D: Enter your Smart Life App account and password to bind Smart Life account to Google Assistant.

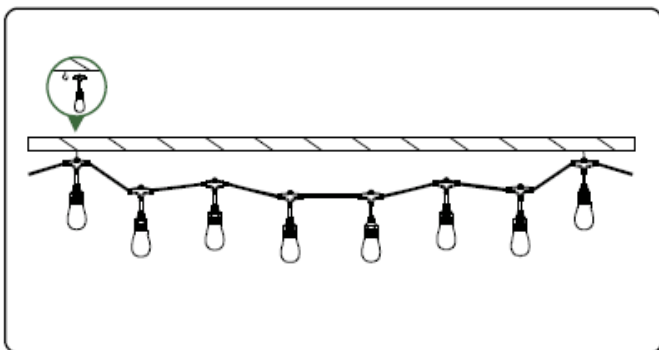
Step E: You will find the named light shows on the Home Control page. Now you can control the light on Google Assistant App, or voice control it by giving these commands: "Ok Google, turn on 'device name'"; "Ok Google, set 'device name' to 'color' "; "Ok Google, set 'device name' to 'number' ".

Device name is the one you give to the light. The light is named 'smart light' in this user guide. For example, "Ok Google, turn on 'smart light' "; "Ok Google, set 'smart light' to 'blue' " etc.



English

When hanging the light string, it is recommended to use S-hooks, zip ties, cable ties or etc. to hang the hole on the top of each bulb. When you hang the string lights, please do not pull the wires too tight. Keep the wires loose to avoid breaking the signal line inside.



Troubleshooting

I. Fail to connect the smart life App

- Ensure the string lights are powered on.
- Confirm Bluetooth and 2.4ghz WIFI network on your smart phone is enabled.
- Ensure the string lights are flashing to get ready for network connection.
- Ensure your wifi password is correct.
- If WIFI signal is too weak, reset your wifi router and try again. Or position your smartphone close to the control box, then try again.

English

II Fail to control the string light with remote controller

- Power on again.
- Please press the button for more times.
- Please press the Lock /Unlock buttons to check whether the button is locked.
- Press the "1H" and "W" buttons before the string light works for 3 minutes, the lights will flash with blue, then the remote controller can work again.

FCC Statement

This equipment has been tested and found to comply with the limits for a Class B digital device, pursuant to part 15 of the FCC Rules. These limits are designed to provide reasonable protection against harmful interference in a residential installation. This equipment generates, uses and can radiate radio frequency energy and, if not installed and used in accordance with the instructions, may cause harmful interference to radio communications. However, there is no guarantee that interference will not occur in a particular installation. If this equipment does cause harmful interference to radio or television reception, which can be determined by turning the equipment off and on, the user is encouraged to try to correct the interference by one or more of the following measures:

- Reorient or relocate the receiving antenna.
- Increase the separation between the equipment and receiver.
- Connect the equipment into an outlet on a circuit different from that to which the receiver is connected.
- Consult the dealer or an experienced radio/TV technician for help.

Caution: Any changes or modifications to this device not explicitly approved by manufacturer could void your authority to operate this equipment. This device complies with part 15 of the FCC Rules. Operation is subject to the following two conditions: (1) This device may not cause harmful interference, and (2) this device must accept any interference received, including interference that may cause undesired operation.

RF Exposure Information

This equipment complies with FCC radiation exposure limits set forth for an uncontrolled environment. This equipment should be installed and operated with minimum distance 20cm between the radiator and your body.