
Specification of LED Down light

I. Product introduction

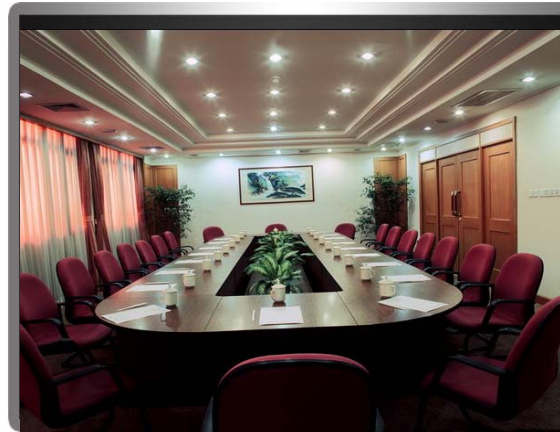
Our LED Down light is made by Special different view angles mixing lighting design, inner high efficiency constant current driver, with less light degradation and 35000hour lifespan replacing traditional down light, better than most similar product.

II. NEUsmart LED Down lights Features :

- a. Mood lighting - Create ambience with different colors
- b. Dimmable - Allow user to select the perfect shade and brightness
- c. Vacation mode - Gives the impression that someone is at home even when the user is away.
- d. Sunrise & Sunset mode - Rise or sleep naturally with a scheduled sunrise/sunset to start/end the day
- e. Music - Pulse the light to our favorite music beats
- f. Shake - Shake your phone to change the colors of your lights

III. Application:

Available for City、Buildings、Plaza、Hotel、Offices. etc



IV Product basic details.



Specifications of Smart Downlight	
Input voltage	AC100-240V
Power Factor	>0.8
Beam angle	140°
Working environment	-40° ~ 65°
Type of LED	Cool White: SMD 5730/40pcs
	Warm White: SMD 5730/40pcs
	RGB: SMD 5730/6pcs
Wattage (Normal)	20W
Total Operating Current	300MA
Color Temperature	2800-6500K/RGB
LED Qty	86PCS
Luminous Flux	1600-1800LM
CRI	80Ra
Life Span	More than 30,000 Hours
IP Grade	IP40

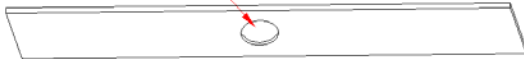
VI. Instruction before installation.

1. We are here to introduce u to the NEUsmart app which is used to program, schedule and control your NEUsmart lights
2. First of all, take out the smart Downlight, connect & switch on and off the lights 5 times in order to restore the smart light to default setting. The downlight is reset when the color changes from red, green to blue and then to yellow and white.
3. Next download the app and tap on it to open the app
4. To being pairing and control the devices, simply click on "Operations" and then "Search for New Devices"
5. The app will start scanning for any available NEUsmart devices and once devices are found, all u have it do is tap on the device to connect it.
6. After the device is connected, u can begin to control the light such as turning on and off the light, changing to different colors and dimming the lights.
7. The NEUsmart apps also has other features such as vacation setting, sunrise and sunset settings, music settings.
8. Application: Residential, Hospitality Commercial and Industrial Premises

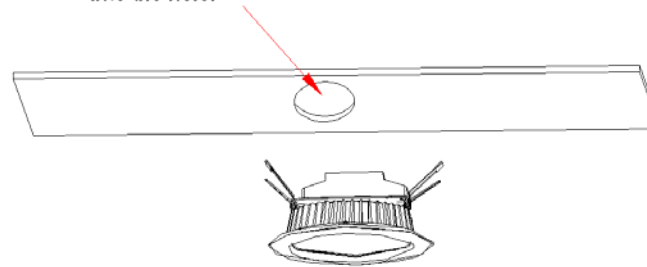
VII. Installation:

Replace traditional canister light wiring diagram and installation

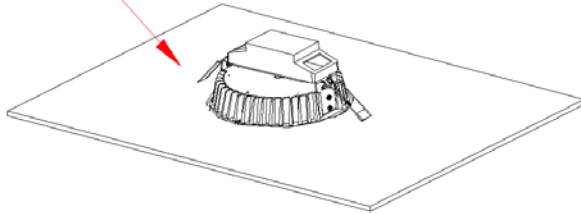
Step1: Drill a right hole where to need to install downlight.



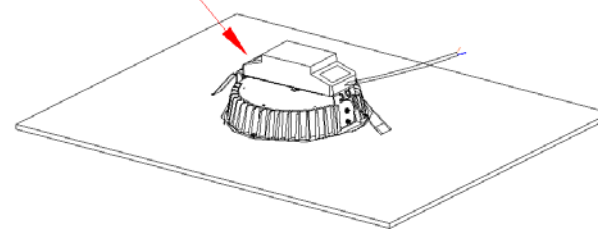
Step2: Pull up spring clamp before putting the downlight into the hole.



Step3:Fasten downlight and the spring clamp will be automatically back to the wooden partition..



Step4:Connect operating voltage AC100V-240V to L/N terminals.
(Only press the L/N Shrapnel when wiring and wier off from the terminal)



§ 15.19 Labelling requirements.

This device complies with part 15 of the FCC Rules. Operation is subject to the following two conditions: (1) This device may not cause harmful interference, and (2) this device must accept any interference received, including interference that may cause undesired operation.

§ 15.21 Information to user.

Any Changes or modifications not expressly approved by the party responsible for compliance could void the user's authority to operate the equipment.

§ 15.105 Information to the user.

Note: This equipment has been tested and found to comply with the limits for a Class B digital device, pursuant to part 15 of the FCC Rules. These limits are designed to provide reasonable protection against harmful interference in a residential installation. This equipment generates uses and can radiate radio frequency energy and, if not installed and used in accordance with the instructions, may cause harmful interference to radio communications. However, there is no guarantee that interference will not occur in a particular installation. If this equipment does cause harmful interference to radio or television reception, which can be determined by turning the equipment off and on, the user is encouraged to try to correct the interference by one or more of the following measures:

- Reorient or relocate the receiving antenna.
- Increase the separation between the equipment and receiver.
- Connect the equipment into an outlet on a circuit different from that to which the receiver is connected.
- Consult the dealer or an experienced radio/TV technician for help.

* RF warning for Portable device:

The device has been evaluated to meet general RF exposure requirement. The device can be used in portable exposure condition without restriction.