

## Overview

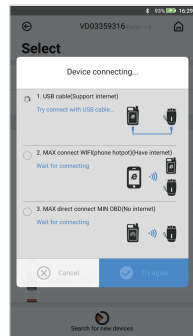
MINI OBD TOOL is a multi-function vehicle programming tool with vehicle diagnosis, Immo Programming, Throttle program, Tire pressure light reset, maintenance light reset and etc.

MINI OBD TOOL can connect with specific software or hardware by WIFI, WLAN or interface.

## 1. Device Connection Success

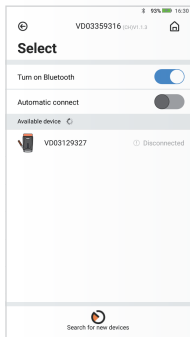
### ① Connect To Device

Turn on KEY TOOL MAX, switch to MINI OBD TOOL interface, click [Select], available device will be shown on the screen, select correct device.



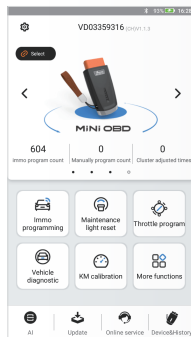
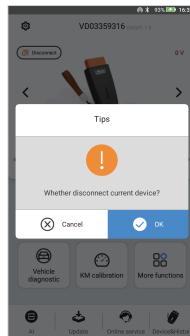
### ② Check Connection Status

Software will detect current device with software interface connection status, WLAN connection status and WIFI connection status



### ③ Device Connection Success

When KEY TOOL MAX success to connect to MINI OBD TOOL, Serial Number will be shown on the top of the screen.



### ④ Disconnect Device

When MINI OBD TOOL finish the job, disconnect MINI OBD TOOL.

## 2. Main Functions





Xhorse APP

Xhorse |

DOWNLOADABLE FROM **GOOGLE PLAY** STORE AND **APP STORE**.



### | 3. More Functions



Battery  
Programming



Mileage  
Correction



Steering Angle  
Calibration



Key Code  
Learning



EABS  
Programming



Remote Manual  
Programming

### | 4. Warranty And After-Sale Instructions

MINI OBD TOOL with one year warranty, and it is based on the date on the transaction voucher; If do not have transaction voucher or lost it, the factory date recorded by the manufacturer will prevail.

※ Situations on the below can not get free repairment

- Damage caused by not following the use instructions.
- Damage caused by repairing or retrofitting in private.
- Damage caused by fall, crash or inappropriate voltage.
- Damage caused by inevitable force.
- Damage caused by using in harsh environment or on the vehicle and ship for a long time; Get main body dirty and worn due to use.

Please get in contact with dealer or scan the QR code behind the instruction, download Xhorse official APP to get after-sale and technical support.

All rights reserved. Any individual or organization is forbidden to copy or spread in any form from this manual without permission.

Due to product improvements, the contents of this manual may change without notice.

**Notes:** Support OBD port 12V/1A, 24V/0.5A, USB 5V/0.5A

Xhorse®

# MINI OBD TOOL

## User Manual

FCC ID: 2AI4T-XDMO00



FCC statements:

This device complies with part 15 of the FCC rules. Operation is subject to the following two conditions: (1) this device may not cause harmful interference, and (2) this device must accept any interference received, including interference that may cause undesired operation.

NOTE: The manufacturer is not responsible for any radio or TV interference caused by unauthorized modifications or changes to this equipment. Such modifications or changes could void the user's authority to operate the equipment.

NOTE: This equipment has been tested and found to comply with the limits for a Class B digital device, pursuant to part 15 of the FCC Rules. These limits are designed to provide reasonable protection against harmful interference in a residential installation. This equipment generates uses and can radiate radio frequency energy and, if not installed and used in accordance with the instructions, may cause harmful interference to radio communications. However, there is no guarantee that interference will not occur in a particular installation. If this equipment does cause harmful interference to radio or television reception, which can be determined by turning the equipment off and on, the user is encouraged to try to correct the interference by one or more of the following measures:

- Reorient or relocate the receiving antenna.
- Increase the separation between the equipment and receiver.
- Connect the equipment into an outlet on a circuit different from that to which the receiver is connected.
- Consult the dealer or an experienced radio/TV technician for help.

Federal Communication Commission (FCC) Radiation Exposure Statement

When using the product, maintain a distance of 20cm from the body to ensure compliance with RF exposure requirements.