



KEY READER

User Manual

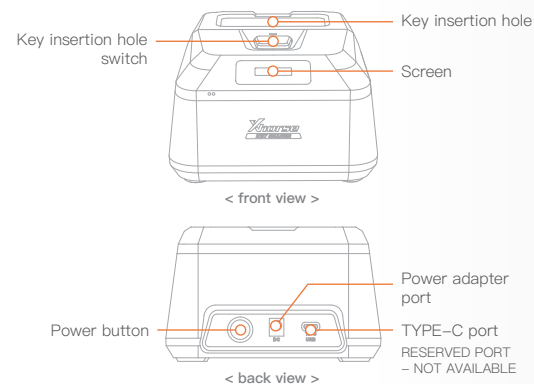


Overview

KEY READER is a professional and portable key recognition device that is able to recognize almost all car and motorcycle keys (including plastic keys and aluminum keys) quickly and accurately on the market. The recognition result is marked with key points intelligently. The device can be connected to Xhorse CNC machines or controlled by smartphone with Xhorse APP. It's very easy to use with great stability and accurate identification result.



1. Structure diagram

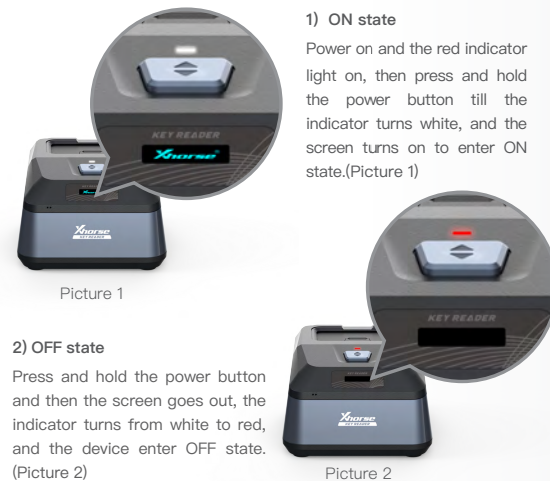


2. Performance parameter

- Screen size: 0.91" OLED
- Camera resolution: 13MP
- Voltage: 12V

3. Button instruction

① **Power button:** press and hold the power button for 5 seconds to turn on the device. And press and hold for 5 seconds to turn off the device.



② Keyhole switch button:



4. Screen display instruction

After turning on the device, the screen will display the words "Xhorse", the device Ver and the Bluetooth icon and the device SN in succession. When your phone connects to the device by Bluetooth successfully, the screen will display Bluetooth connection status icon and the device SN.



5. Connect to phone

Click on [Cut by Bitting] on the APP homepage and select the type of key blank, then click on [Optical Identification] to enter the bitting recognition interface. The KEY READER will connect to the mobile phone via Bluetooth by default. (If you want to connect with WIFI, you can select WIFI connection in the identification interface)



① Bluetooth connection

Click on [Connect] and the interface displays the connectable devices, then select the device to connect according to the device SN. If it's connected successfully, the device screen will display Bluetooth icon, and the APP will display Bluetooth connected and corresponding device SN.

*Android phones need to set Bluetooth pairing when connecting to the device via APP for the first time.

② WiFi connection

1) Select WiFi connection, click on [Connect] and the interface displays the connectable devices, then select the device to connect according to the device SN.

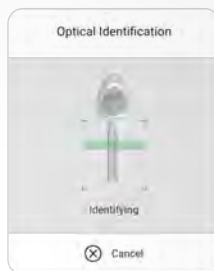
2) Enter WiFi name and password that mobile phone connecting (or turn on the mobile hotspot and enter the name and password of the hotspot), and the APP will connect automatically and then display WiFi connected and corresponding device SN.



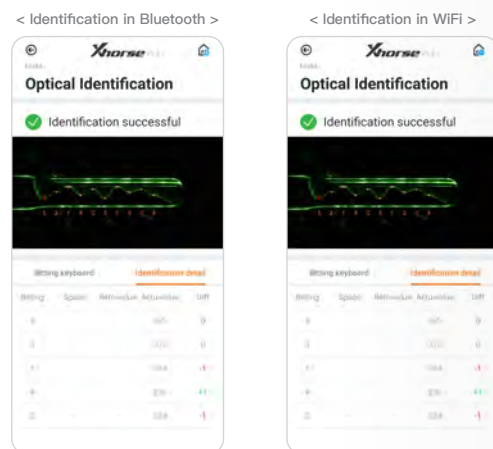
6. Operation instruction

① After successful connection, click on [Identification].

② Place the key according to the figure and click on [Identification], then the APP interface will display [Identifying], and the device screen will display [Identifying].



③ The device screen will display [Complete] and the APP will display the bitting data after successful identification.



7. Maintenance

- Do not violently hit, shake or throw the device.
- Do not directly rinse the device with water or other liquids, and do not wipe the device with a damp cloth.
- Do not place the device in high temperature, high humidity or dusty environment.
- Do not disassemble or modify the device privately, otherwise it may cause accidents such as damage to the main board or battery fire.
- Please protect the key components (screen e.g.) to prevent sharp objects from damaging them.



8. Warranty and after-sale description

KEY READER has a warranty of 1 year. The warranty starts from the date on invoice. If there is no invoice or the invoice is missing, purchase records from factory is used as reference.

- Within Warranty, free maintenance and repairing is not provided if the machine becomes dysfunctional due to the following reasons:
 - Operation without referring to or violating the user manual
 - Modifications or repairs to the machine by individuals
 - Falling, knocking or wrong voltage
 - Force majeure
 - Use of the machine in places such as ships that are bad for the machine for a long time
 - Damaged or worn-out plastic case due to frequent use

Regarding to customer service and technical support, please contact distributors or Xhorse online customer service team by scanning the QR code on the back and downloading Xhorse official APP.

The picture is for reference only, the product is subject to the actual product. All the information and illustrations in this document are for guidance only. Xhorse reserves the right to alter products designs, dimensions or info to improve the products quality. The contents of this document are fully protected by Copyright and may not be copied or reproduced in any form (e.g. mechanical, electronic, printing or video recording), without permission from Xhorse.

FCC statements:

This device complies with part 15 of the FCC rules. Operation is subject to the following two conditions:

- this device may not cause harmful interference, and
- this device must accept any interference received, including interference that may cause undesired operation.

NOTE: The manufacturer is not responsible for any radio or TV interference caused by unauthorized modifications or changes to this equipment. Such modifications or changes could void the user's authority to operate the equipment.

NOTE: This equipment has been tested and found to comply with the limits for a Class B digital device, pursuant to part 15 of the FCC Rules. These limits are designed to provide reasonable protection against harmful interference in a residential installation. This equipment generates uses and can radiate radio frequency energy and, if not installed and used in accordance with the instructions, may cause harmful interference to radio communications. However, there is no guarantee that interference will not occur in a particular installation. If this equipment does cause harmful interference to radio or television reception, which can be determined by turning the equipment off and on, the user is encouraged to try to correct the interference by one or more of the following measures:

- Reorient or relocate the receiving antenna.
- Increase the separation between the equipment and receiver.
- Connect the equipment into an outlet on a circuit different from that to which the receiver is connected.
- Consult the dealer or an experienced radio/TV technician for help.

Federal Communication Commission (FCC) Radiation Exposure Statement

When using the product, maintain a distance of 20cm from the body to ensure compliance with RF exposure requirements.

The device for operation in the band 5150-5250 MHz is only for indoor use to reduce the potential for harmful interference to co-channel mobile satellite systems.



CE/UKCA Statements:

Do not use the device in the environment at too high or too low temperature, never expose the mobile phone under strong sunshine or too wet environment.

The suitable temperature for the product and accessories is -20°C-50°C.

RF exposure information:

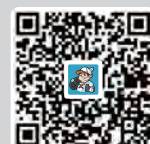
The Maximum Permissible Exposure (MPE) level has been calculated based on a distance of d=20cm between the device and the human body. To maintain compliance with RF exposure requirement, use product that maintain a 20cm distance between the device and human body.

The device for operation in the band 5150-5250 MHz is only for indoor use to reduce the potential for harmful interference to co-channel mobile satellite systems.

| Operation Frequency | Max. EIRP |
|--------------------------------|-----------|
| Bluetooth: 2402 MHz - 2480 MHz | 8.23 dBm |
| WLAN 2.4G: 2412 MHz - 2472 MHz | 19.79 dBm |
| WLAN 5G: 5180 MHz - 5240 MHz | 17.92 dBm |
| 5745 MHz - 5825 MHz | 13.71 dBm |

This charger is for indoor use only. These charger type are SAW24A-120-2000G, SAW24A-120-2000B, output voltage/current is DC 12V,2A. The plug considered as disconnect device of adapter.

This product can be used across EU/UK member states.



Xhorse APP

Xhorse |

DOWNLOADABLE FROM GOOGLE PLAY STORE AND APP STORE.



FCC ID:2A14T-XDKR00