



REPORT No. : SZ19120007S01

Annex D Plots of Maximum SAR Test Results

WLAN 2.4GHz_802.11b 1Mbps_Right Side_0mm_Ch11

Communication System: UID 0, WLAN 2.4GHz 802.11b (0); Frequency: 2462 MHz; Duty Cycle: 1:1
Medium: HSL_2450 Medium parameters used: $f = 2462$ MHz; $\sigma = 1.88$ S/m; $\epsilon_r = 37.925$; $\rho = 1000$

kg/m³

Ambient Temperature : 23.2 °C; Liquid Temperature : 22.1 °C

DASY5 Configuration:

- Probe: EX3DV4 - SN3823; ConvF(7.3, 7.3, 7.3); Calibrated: 2020.01.03;
- Sensor-Surface: 4mm (Mechanical Surface Detection)
- Electronics: DAE4 Sn871; Calibrated: 2019.06.27
- Phantom: SAM 2; Type: QD000P40CC; Serial: TP:1464
- Measurement SW: DASY52, Version 52.8 (8); SEMCAD X Version 14.6.10 (7331)

Ch11/Area Scan (51x141x1): Interpolated grid: dx=1.200 mm, dy=1.200 mm

Maximum value of SAR (interpolated) = 0.313 W/kg

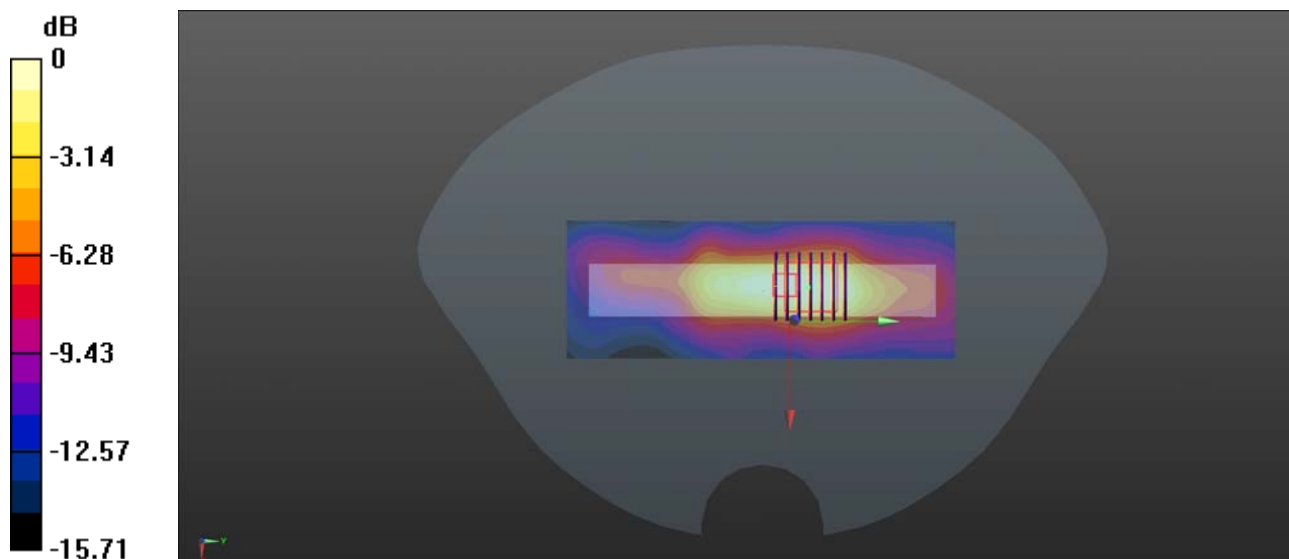
Ch11/Zoom Scan (7x7x7)/Cube 0: Measurement grid: dx=5mm, dy=5mm, dz=5mm

Reference Value = 12.34 V/m; Power Drift = 0.02 dB

Peak SAR (extrapolated) = 0.597 W/kg

SAR(1 g) = 0.272 W/kg; SAR(10 g) = 0.138 W/kg

Maximum value of SAR (measured) = 0.309 W/kg



0 dB = 0.309 W/kg