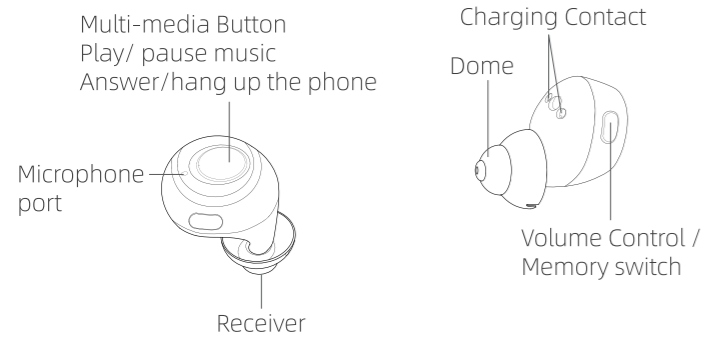
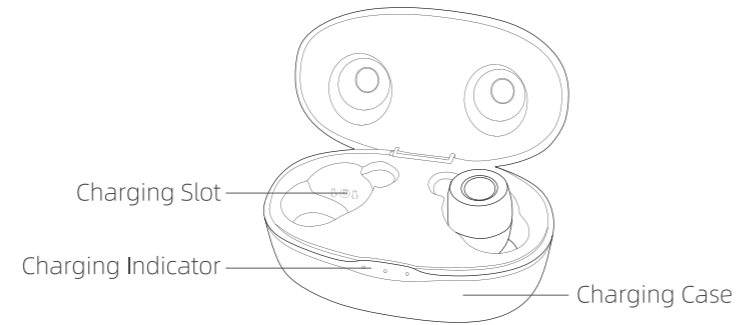


Know about the hearing device and accessories

1. Hearing devices



2. Charging case

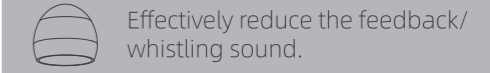


3. About the dome

Magic II dome



Round top dome



Notice:
The quantity may differ from different configuration.

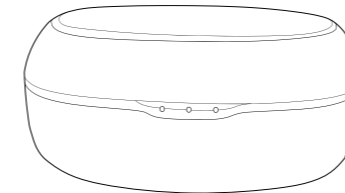
Tips: The devices have In-ear detection, you can activate the function in the SOUNDWEAR App.

How to charge the devices

4. With external 5V power connection



	Charging time	Using time
Hearing devices	3 hours	8 hours
Charging case	2 hours	4 times recharge for both devices



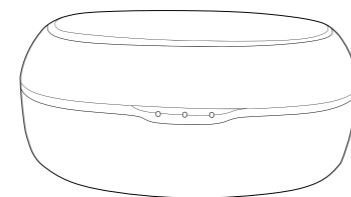
- Three indicators will flash white lights one by one according to the amount of charge.
- When they are fully charged, the three indicators will shine solid white light.
- It needs about 2 hours to fully charge the case.
- The charging case will provide 4 times recharge cycle for both devices.

Notice:
1) Always put your hearing device into the charging case without a dome attached.
2) Always put your hearing device into the charging case when you do not use them.
3) We strongly recommend you fully charge the devices when you first time received.

How to charge the devices

5. Without external power connection

Open the charging case, the numbers of lights turned on white will show you the available battery. One white light indicates you can recharge the devices for one time. When the device is placed into the corresponding charging port, the indicator light will send out the corresponding indicator light to indicate the charging status.

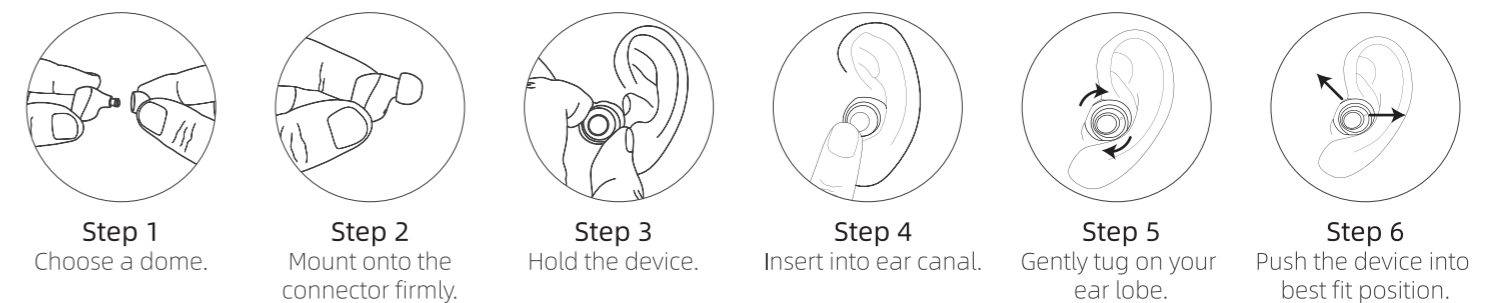


Charging: The indicator shine white light 5 times and then turn off.
Fully charged: Solid white light for 30 seconds and then turn off.

Notice:
Due to the different battery levels of the left and right devices, there will be a time difference in individual states of lights flashing.

How to assemble and wear the devices

6. How to assemble and wear the devices

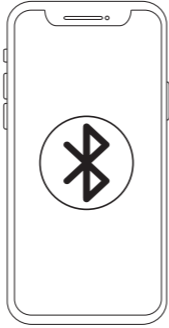


Notice:
The devices come with pre-assembled domes. You can replace one to fit your special needs.
TIPS: Correct position: Microphone port facing the auricle. Do not touch the microphone port during wearing to prevent howling. Whistling may happen if not placed into place, keep patience and try again.

How to use the devices

7. Connect with cellphone

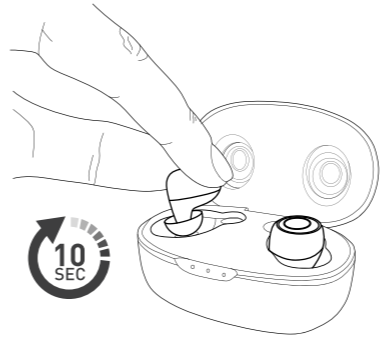
- Step 1:** Take out the device from charging case.
- Step 2:** Wear on the devices.
- Step 3:** Enable the Bluetooth on your cellphone.
- Step 4:** Search the device name of "Poco MU".
- Step 5:** Tap on the "Pococ MU803" to connect your device with your cellphone. Once connected, you will hear the voice indicator "Connected".



! Notice:
After the first pairing, the devices will automatically connect to the cellphone when the Bluetooth turned on. If you finds two devices ID, it means the left and right ear devices lost sync pairing. Please restart pairing and then follow the steps above to reconnect.

8. ON-OFF switch

- To turn on:** Just take the devices out of the charging case, they will be automatically turned on. You will hear voice indicator " power on".
- To turn off:** Place the devices into corresponding port of the charging case.



! Notice:
The devices are designed with In-ear detection, so the hearing enhancement function will be turned on when you wear the devices into place. When the devices are in low battery, they will emit voice indicator "battery low". Please recharge in time.

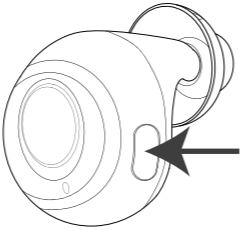
How to use the devices

9. Hearing enhancement

If not connect to the Bluetooth, the devices will automatically in the mode of hearing enhancement. The Volume control/Memory switch button are used to change volume and listening programs. There are totally 4 listening programs.

Memory switch
To change the listening programs, please long press the Volume control/ Memory switch button for 2-3 seconds. You will hear voice indicator like "program 1" and so no.

Volume control
To change the volume, please short press the volume control/ memory switch.
When you reach the highest volume, you will hear voice indicator " maximum volume".



Program	Suit for
Program 1	General
Program 2	Restaurant
Program 3	TV watching
Program 4	Outdoor

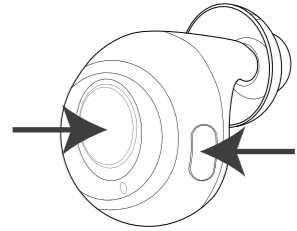
10. Other functions

Phone Call
when there comes a phone call, you will hear voice indicator " incoming call", please press the multi-media button to answer phone call, and long press for 2 seconds to hang up phone call. Please adjust the volume on your smartphone.

Music Streaming
Please adjust the volume on your smartphone or through the music App.

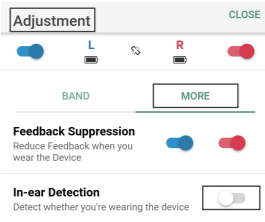
Activate Virtual Assistant/Siri
Long press Multi-media button for 1 second.

Restart pairing
Long press the Multi-media button and the Volume control/ Memory switch button together for 3 seconds at the same time to clear all the pairing devices and restart pairing status.



How to use the App

- Step 1: Wear on your device and turn on it.
- Step 2: Enable the Bluetooth on your phone.
- Step 3: Search the device.
- Step 4: Tap to connect your device with your phone.
- Step 5: You can adjust the volume, switch listening program and many customized adjustment through the APP. Kindly refer to the APP manual for better using.



Tips: To activate the In-Ear detection function, please follow the path: SOUNDWEAR APP > Adjustment > More

! Notice:
Only Available on iOS 9 or later, iPhone 5 or above; Android 6 or later, screen size 4" or above.

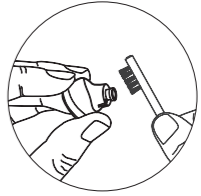
Maintenance

11. Care (You should inspect and clean your hearing devices everyday)

1) Clean the exterior & charging contact
To clean, gently wipe the surface with a soft, dry cloth. Use the brush to clean the receiver port. Do keep the charging contact and charging port clean and dry. It is recommended to use dry or electronic dry box for drying every day to reduce moisture and wax buildup.



2) Clean the dome
Use the brush to clean the dome. It's recommended that replace with new dome every 2-3 months.



! Notice:
The hearing instruments and charger must be clean and dry in any case.

FCC Statement (FCC ID: 2A14QPOCOMU-L , FCC ID: 2A14QPOCOMU-R)

Changes or modifications not expressly approved by the party responsible for compliance could void the user's authority to operate the equipment.

This equipment has been tested and found to comply with the limits for a Class B digital device, pursuant to Part 15 of the FCC Rules. These limits are designed to provide reasonable protection against harmful interference in a residential installation.

This equipment generates uses and can radiate radio frequency energy and, if not installed and used in accordance with the instructions, may cause harmful interference to radio communications. However, there is no guarantee that interference will not occur in a particular installation. If this equipment does cause harmful interference to radio or television reception, which can be determined by turning the equipment off and on, the user is encouraged to try to correct the interference by one or more of the following measures:

- Reorient or relocate the receiving antenna.
- Increase the separation between the equipment and receiver.
- Connect the equipment into an outlet on a circuit different from that to which the receiver is connected.
- Consult the dealer or an experienced radio/TV technician for help.

This device complies with part 15 of the FCC rules. Operation is subject to the following two conditions (1) this device may not cause harmful interference, and (2) this device must accept any interference received, including interference that may cause undesired operation.

RF warning for Portable device:

The device has been evaluated to meet general RF exposure requirement. The device can be used in portable exposure condition without restriction.