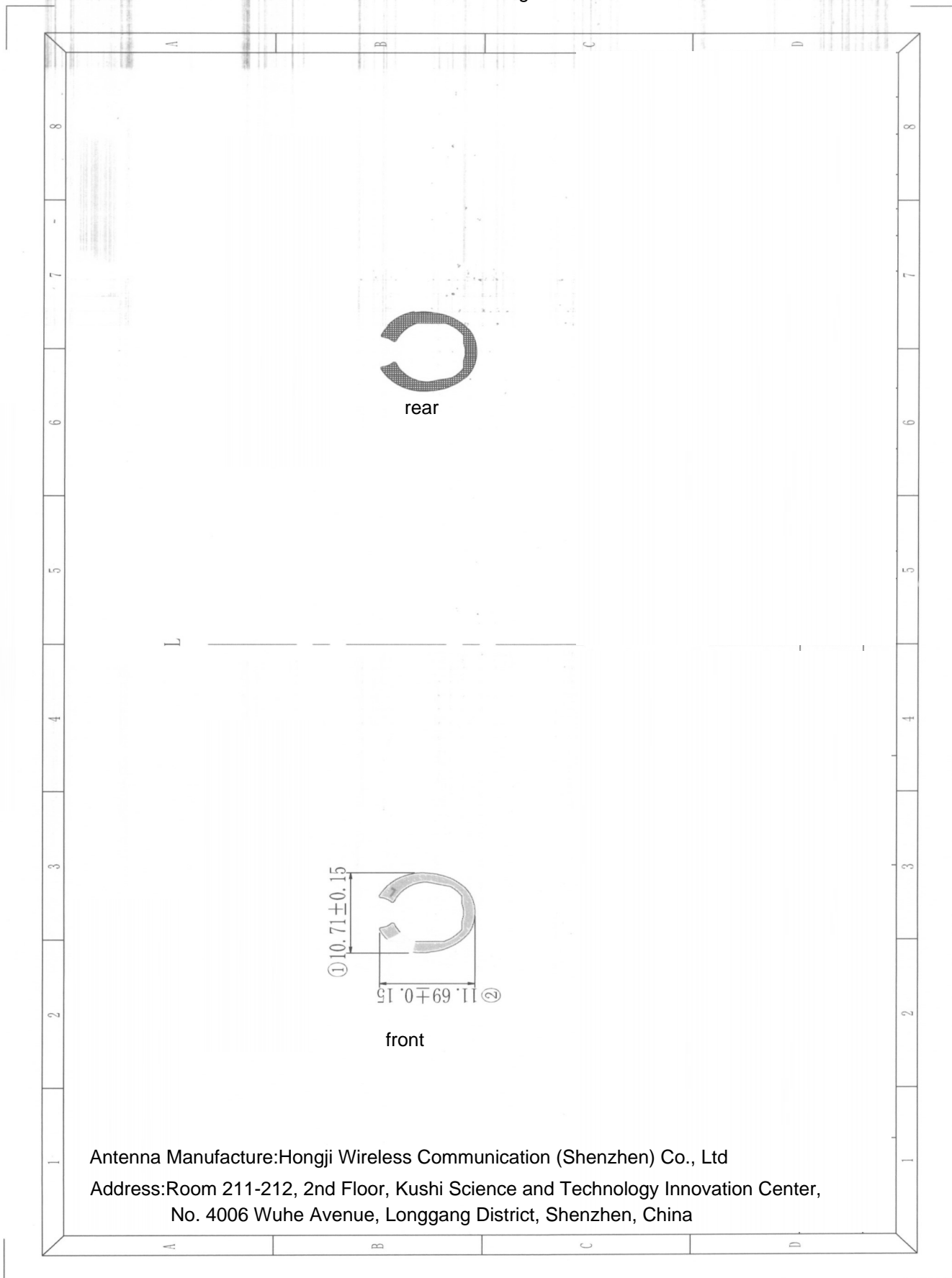


# Antenna Drawing



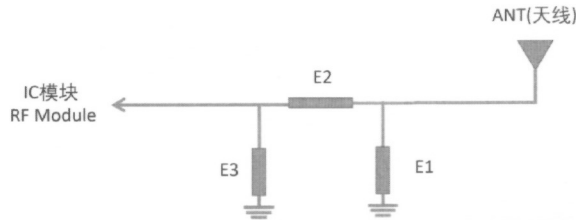
Antenna Manufacture: Hongji Wireless Communication (Shenzhen) Co., Ltd  
Address: Room 211-212, 2nd Floor, Kushi Science and Technology Innovation Center,  
No. 4006 Wuhe Avenue, Longgang District, Shenzhen, China

# 电气、机械性能说明

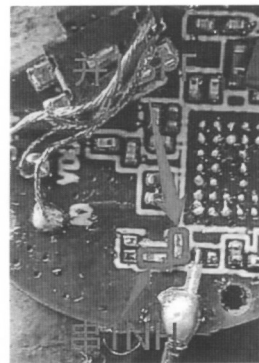
## Electrical and mechanical performance specifications

### 1、匹配电路图 Matching circuit diagram

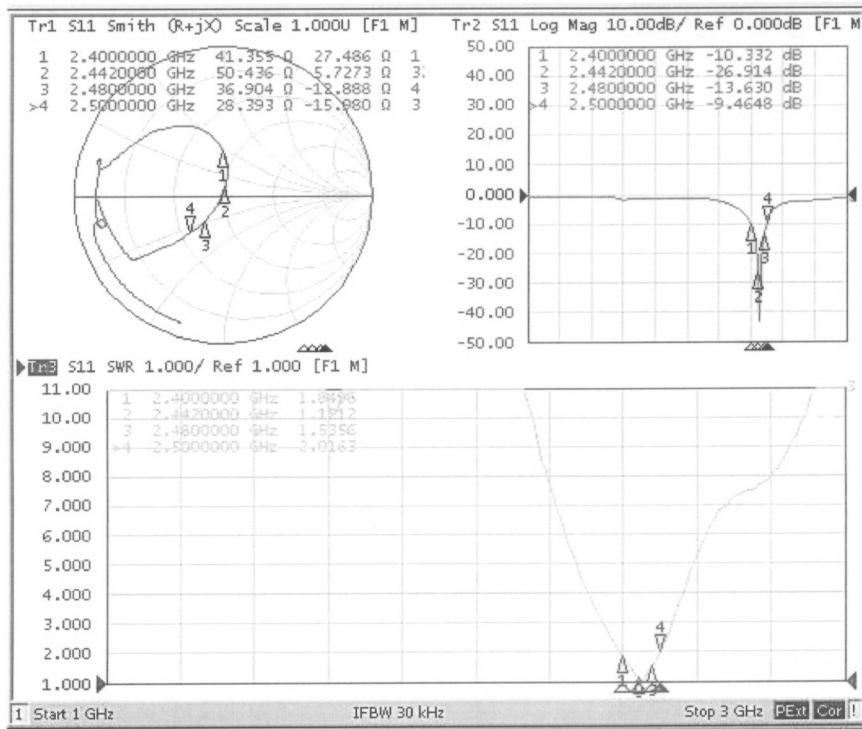
天线匹配电路说明 Antenna circuit matching description



| Element | Value |
|---------|-------|
| E1      | N/A   |
| E2      | 1NH   |
| E3      | 1.5PF |

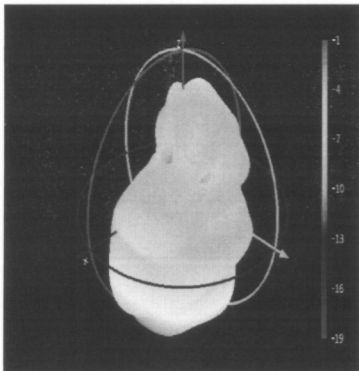


### 2、S11参数 parameter

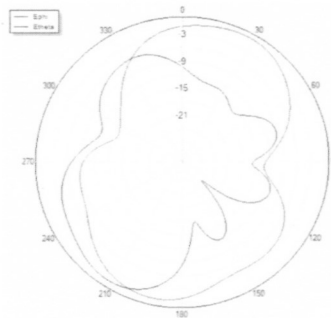


### 3、无源效率 Passive efficiency

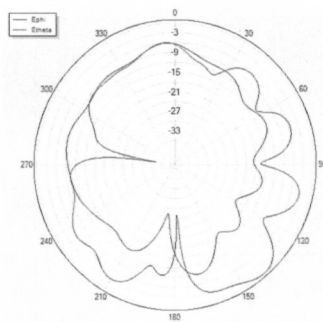
| Freq[MHz] | Efficiency(%) | Gain(dBi)  |
|-----------|---------------|------------|
|           | free space    | free space |
| 2400      | 19.73         | -1.33      |
| 2410      | 19.82         | -1.23      |
| 2420      | 19.73         | -1.17      |
| 2430      | 19.53         | -1.15      |
| 2440      | 19.28         | -1.14      |
| 2450      | 19.05         | -1.06      |
| 2460      | 18.8          | -0.98      |
| 2470      | 18.52         | -0.93      |
| 2480      | 18.21         | -0.96      |



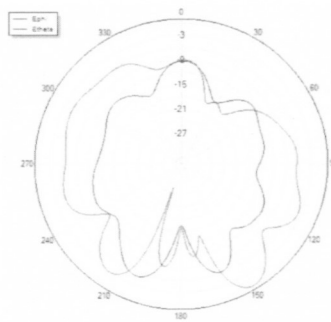
Theta=90 freq=2450MHz



Phi=90 freq=2450MHz



Phi=0 freq=2450MHz



#### 4、有源OTA数据 Active OTA data

| L                  | 信道(CH) | TRP (dBm) | TIS (dBm) |
|--------------------|--------|-----------|-----------|
| 自由空间<br>free space | 0      | -0.57     | -86.79    |
|                    | 39     | -0.72     | -87.03    |
|                    | 78     | -0.79     | -86.28    |

