

# IRIS20 User Manual

## ◎ Model : IRIS20

## ◎ Preface

- IRIS20 is a Bluetooth enabled products connected with the smart-phone control through the application
- This product is an electronic device that amplifies the voice of the surrounding, It will assist listening skills of hearing who people with hearing problems

## ◎ Product composition

- IRIS20(1EA), Case, User Manual, Ear dome, Cleaning tool

## ◎ Safety instruction

- Wireless device that has the potential interference of radio waves operate.
- This wireless device may cause propagation interference, and so life-saving services are not available.
- For patients with otitis media, please refer to the Notice, please follow the advice of your doctor about the use of the product.

## ◎ Feature

Power	1.4V Type 312 x 1ea
Frequency	2.402 ~ 2.480 (GHz)
Modulation	GFSK
Num. of channel	40 channel
Power of Antenna	0mW
Type of Antenna	Chip

## ◎ Origin & AS information

- Development / Vendors : Microtech System,Inc Tel.+82 31 303 5800 Fax. +82 31 303 5822  
Address : A-1102, Digital Empire Building, 980-3, Yeongtong-dong, Yeongtong-gu, Suwon-si  
Gyeonggi-do, South Korea
- Manufacture : NewSound Technology Co., Ltd
- AS : Microtech System,Inc Tel.+82 31 303 5800 Fax. +82 31 303 5822

## © FCC Warning

This device complies with part 15 of the FCC Rules. Operation is subject to the following two conditions:

- (1) This device may not cause harmful interference, and
- (2) this device must accept any interference received, including interference that may cause undesired operation.

**Note:** This equipment has been tested and found to comply with the limits for a Class B digital device, pursuant to part 15 of the FCC Rules. These limits are designed to provide reasonable protection against harmful interference in a residential installation. This equipment generates uses and can radiate radio frequency energy and, if not installed and used in accordance with the instructions, may cause harmful interference to radio communications. However, there is no guarantee that interference will not occur in a particular installation. If this equipment does cause harmful interference to radio or television reception, which can be determined by turning the equipment off and on, the user is encouraged to try to correct the interference by one or more of the following measures:

- Reorient or relocate the receiving antenna.
- Increase the separation between the equipment and receiver.
- Connect the equipment into an outlet on a circuit different from that to which the receiver is connected.
- Consult the dealer or an experienced radio/TV technician for help.

Any Changes or modifications not expressly approved by the party responsible for compliance could void the user's authority to operate the equipment.

The device has been evaluated to meet general RF exposure requirement. The device can be used in portable exposure condition without restriction.

## © How to use

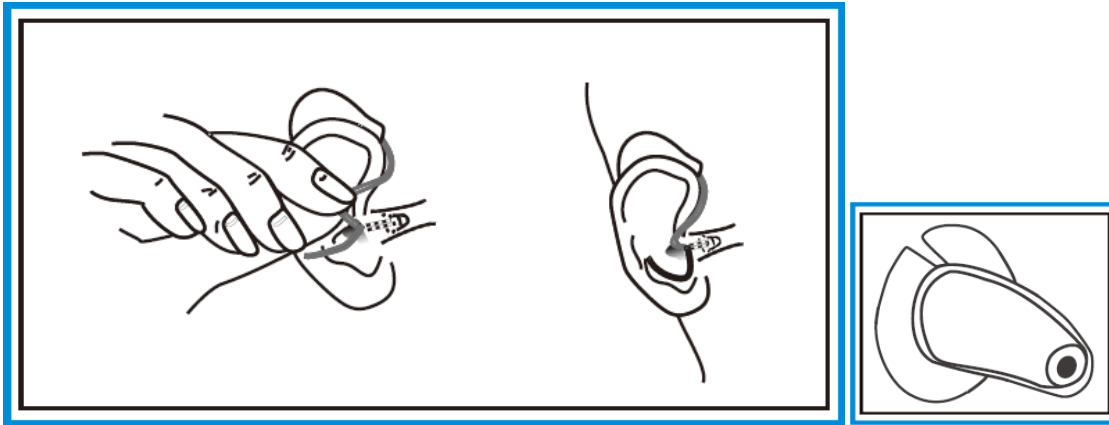
### 1. How to wear your hearing instrument

- Before insertion, please clean your ear and make sure the battery door is closed properly.

Follow the steps:

step 1 : Gently insert the amplifier into your ear canal to the most comfortable place;

step 2 : Place the other parts over the top of your ear.



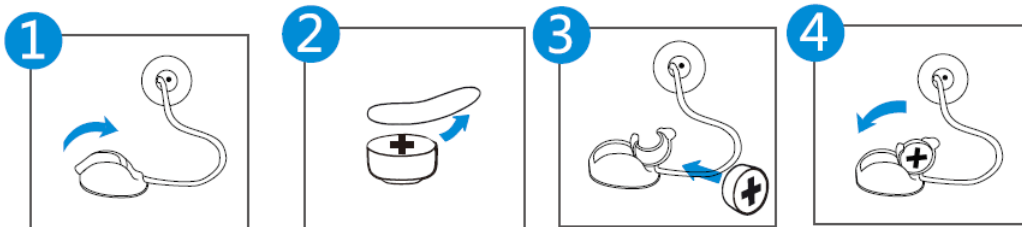
### 2. Replacing the battery

(1) Open the battery door and remove the old battery.

(2) Remove the adhesive label from the new battery.

(3) Insert the new battery, and ensure that the plus(+) sign up.

(4) Close the battery door.



### 3. Cleaning the instrument

Clean your instrument with a soft, dry cloth and a small brush.

Do the cleaning on a soft table to avoid damage or scratch in case the instrument falls.

Do not use water or other fluid.

