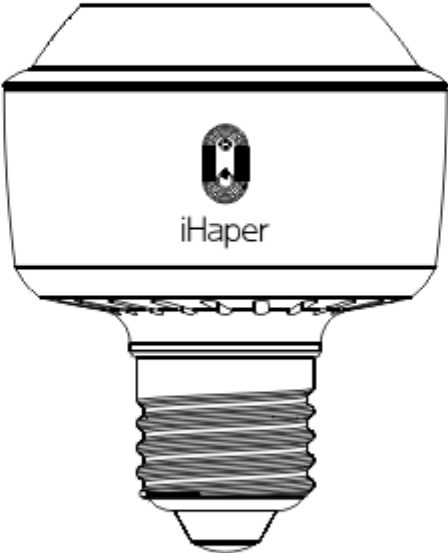


# Light Socket User Manual

# iHaper

User Manual

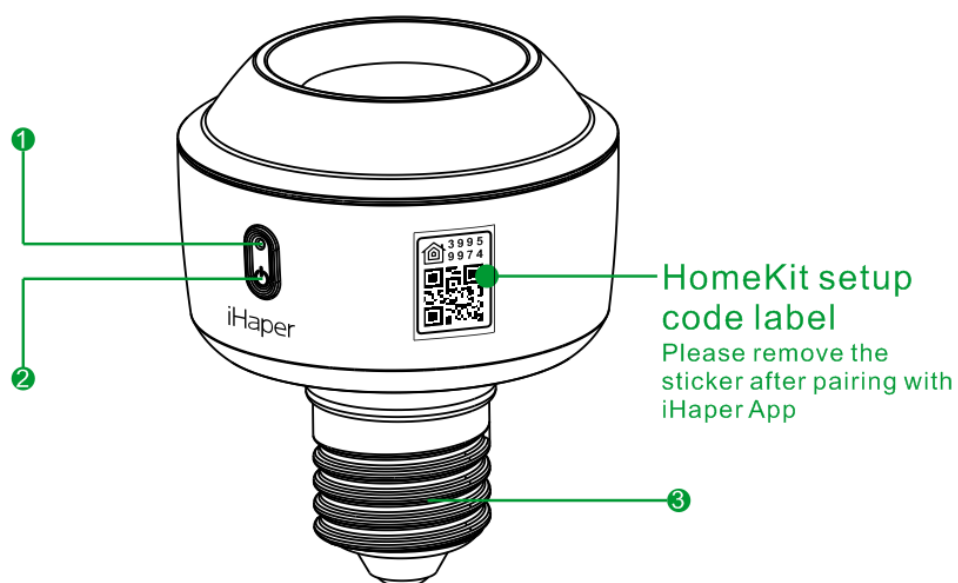
Light Socket



S1

Shenzhen Globalegrow E-Commerce Co., Ltd.

## Overview



- ① Power / Wi-Fi connection indicator
- ② Power Button
- ③ E26/E27 BASE

- ① Power / Wi-Fi connection indicator
- ② Power button
- ③ E26 / E27 base

HomeKit setup code label

Please remove the sticker after pairing with iHaper app

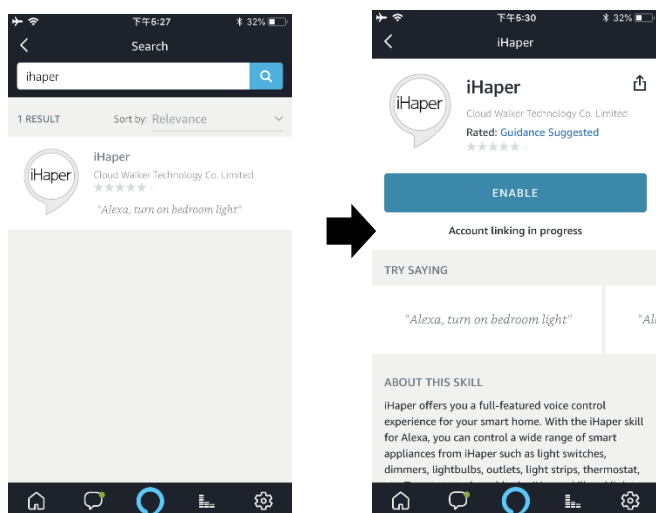
## Quick Start Guide

1. Please turn off power before twisting a light bulb into the light socket. Make sure the light socket is connected correctly and turn on the power. The blue LED light will flash when it is ready for network setup.
2. Make sure your iPhone or iPad (iOS 10.0 or later) is connected to a 2.4GHz Wi-Fi network. (This product does not support 5GHz Wi-Fi Networks.)

3. Make sure you have at least 2 bars of Wi-Fi signal there.
4. Download the free iHaper app from the App store and log in.
5. Tap “+” and scan the QR code. Then follow the steps to add the device to the Home and Room. Please keep the QR code for future use.
6. Name this product to help you identify it in the Home app and to control it with Siri. For example, you can name the product ”Room Light”, then launch Siri and speak “Turn on the Room Light”.
7. Create a scene which controls multiple accessories at the same time. Tap the scene to turn it on or off, or just ask Siri. For example, if you assign the “Good Night” command to the scene of turning off room light and turning on the living room light, when you speak “Good night” to Siri, everything is done.

## Enabling Alexa

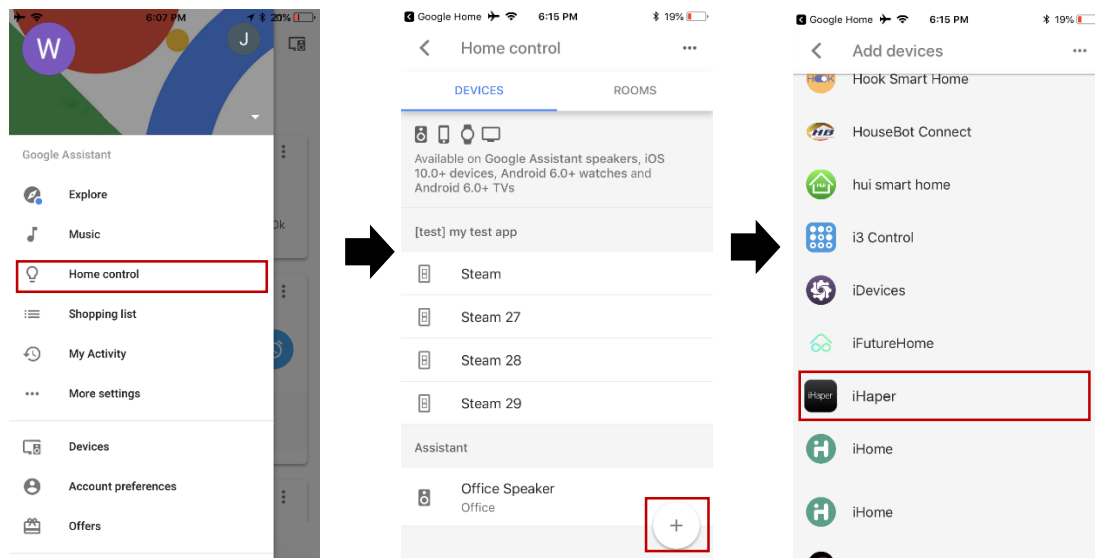
1. Create an account in iHaper App ( username and password are case sensitive) and login to your account.
2. Go to iHaper App > long press device icon to enter the detail.
3. Enable Cloud registration.
4. Open Alexa App and enable iHaper Alexa skills using the same account info.



5. Discover light socket in the Alexa App, and then follow the steps to complete setup.

## Enabling Google Home

1. Open Google Home App and go to home control.
2. Tap “+” to select iHaper device.
3. Enter iHaper account info and enable.



4. Discover light socket in the Google App, and then follow the steps to complete setup.

## Note

1. The use of a HomeKit - enabled accessory need the following permissions:

Setting > iCloud > iCloud Drive > Turn On

Setting > iCloud > Keychain > Turn On

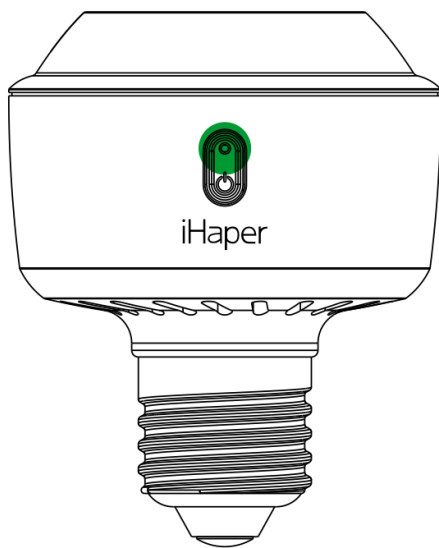
Setting > Privacy > HomeKit > iHaper > Turn On

2. Controlling this HomeKit-enabled accessory automatically and away from home requires an Apple TV with tvOS 10.1 or later or an iPad with iOS 10.1 or later set up as a home hub.

## Restore Factory Settings

Press and hold the power button of the light socket for about 5 seconds.  
When the blue LED light flashes slowly, it indicates that you have restored the device to factory settings.

## Status of power / Wi-Fi connection indicator



- Blue LED flashes slowly: Light Socket is waiting for a Wi-Fi network configuration.
- Blue LED flashes quickly: Light Socket is connecting a Wi-Fi network.
- Blue LED stays: Light Socket is ON.
- Blue LED is off: Light Socket is OFF.

## Specification

Model: S1

Max load: 25W LED / CFL only

Input: 100-240V AC, 50/60Hz

Base type: E26 (US) / E27 (EU)

Operating temperature: 5 ° C ~ 45 ° C

Wi-Fi: 802.11b/g/n, 2.4GHz ONLY

General Indoor use

## Safety Warning

Turn off power before inspection, installation and removal

For indoor use only

Screw directly into a light fixture

Keep children away from the light socket

Remove Light socket from the light fixture before cleaning

Avoid dropping

DO NOT disassemble

DO NOT clean with liquid

DO NOT use abrasives or solvents

DO NOT use in wet or damp areas

DO NOT use in enclosed environments

DO NOT exceed the recommended electrical ratings

## Legal

Use of the Works with Apple HomeKit logo means that an electronic accessory has been designed to connect specifically to iPod touch, iPhone, or iPad, respectively, and has been certified by the developer to meet Apple performance standards. Apple is not responsible for the operation of this device or its compliance with safety and regulatory standards.

## Disclaimer

**1. To protect your legal rights, please read the instructions provided in manual with this product carefully before using. By using this product, you agree that you have read, understood, approved and accepted the Terms and Conditions Agreement within this instruction manual.**

**2. When using this product, it is advised that you please, strictly follow the requirements within this instruction manual. iHapXer assumes no responsibility for all accidents, property damage, personal injury, legal disputes, or all other adverse events that cause conflicts of interest due to violations of the required use.**

## FCC Compliance Notice

This device complies with Part 15 of the FCC Rules. Operation is subject to the following two conditions: (1) This device may not cause harmful interference, and (2) this device must accept any interference received, including interference that may cause undesired operation. NOTE 1: This equipment has been tested and found to comply with the limits for a Class B digital device, pursuant to part 15 of the FCC Rules. These limits are designed to provide reasonable protection against harmful interference in a residential installation. This equipment generates, uses and can radiate radio frequency energy and, if not installed and used in accordance with the instructions, may cause harmful interference to radio communications. However, there is no guarantee that interference will not occur in a particular installation. If this equipment does cause harmful interference to radio or television reception, which can be determined by turning the equipment off and on, the user is encouraged to try to correct the interference by one or more of the following measures:- Reorient or relocate the receiving antenna.- Increase the separation between the equipment and receiver.-Connect the equipment into an outlet on a circuit different from that to which the receiver is connected.-Consult the dealer or an experienced radio/TV technician for help. NOTE 2: Any changes or modifications to this unit not expressly approved by the party responsible for compliance could void the user's authority to operate the equipment.

This equipment complies with FCC radiation exposure limits set forth for an uncontrolled environment. This equipment should be installed and operated with minimum distance 20cm between the radiator & your body.