



FCC TEST REPORT

FCC ID: 2AI3Z-C7028

On Behalf of

Video Plus Print Company Ltd.

Video Brochure

Model No.: C7028, C7014, C7021, C7006

Prepared for : Video Plus Print Company Ltd.
Address : #1005, 10/F1, Hermes Commercial Centre, 4-4A Hillwood
Road, TST, Kowloon, HongKong

Prepared By : Shenzhen Alpha Product Testing Co., Ltd.
Address : Building B, East Area of Nanchang Second Industrial Zone,
Gushu 2nd Road, Bao'an District, Shenzhen 518126, P.R. China

Report Number : T1861207 01
Date of Receipt : July 02, 2016
Date of Test : July 02-07, 2016
Date of Report : July 08, 2016
Version Number : REV0

TABLE OF CONTENTS

Description	Page
1. Summary of standards and results	4
1.1. Description of Standards and Results	4
2. GENERAL INFORMATION	5
2.1. Description of Device (EUT).....	5
2.2. Tested Supporting System Details	6
2.3. Block Diagram of connection between EUT and simulators	6
2.4. Test mode Description	7
2.5. Test Facility	7
2.6. Measurement Uncertainty	7
3. POWER LINE CONDUCTED Emission test.....	8
3.1. Test Equipment	8
3.2. Block Diagram of Test Setup.....	8
3.3. Power Line Conducted Emission Test Limits	8
3.4. Configuration of EUT on Test	9
3.5. Operating Condition of EUT	9
3.6. Test Procedure	9
3.7. Conducted Disturbance at Mains Terminals Test Results	10
4. Radiated emission Test	13
4.1. Test Equipment	13
4.2. Block Diagram of Test Setup.....	13
4.3. Radiated Emission Limit	14
4.4. Configuration of EUT on Test	16
4.5. Operating Condition of EUT	16
4.6. Test Procedure	16
4.7. Radiated Disturbance Test Results	17
5. Photograph.....	22
5.1. Photos of Radiated Emission Test (In Semi Anechoic Chamber).....	22
5.2. Photos of Power Line Conducted Emission Test	23
6. Photos of the EUT	24

1. SUMMARY OF STANDARDS AND RESULTS

1.1. Description of Standards and Results

The EUT have been tested according to the applicable standards as referenced below:

EMISSION			
Description of Test Item	Standard	Limits	Results
Power Line Conducted Emission Test	FCC Part 15:2016 ANSI C63.4:2014	Class B	P
Radiated Emission Test	FCC Part 15:2016 ANSI C63.4:2014	Class B	P
Note: 1. P is an abbreviation for Pass. 2. F is an abbreviation for Fail. 3. N/A is an abbreviation for Not Applicable.			

2. GENERAL INFORMATION

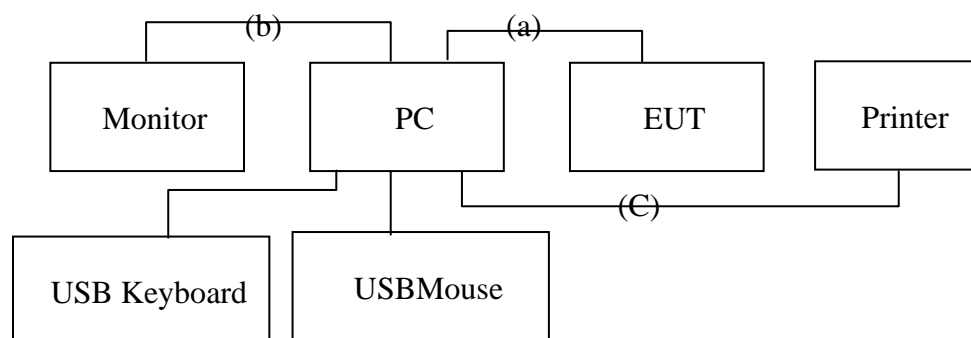
2.1. Description of Device (EUT)

Description	: Video Brochure
Model Number	: C7028, C7014, C7021, C7006
Diff	: There is no difference between all the models, except the appearance color and model name, so this report performs the model C7028
Test Voltage	: DC 5V from USB port, DC 3.7V from battery
AC Adapter	: N/A
Highest frequency	: 369MHz
Software version	: 1.11.7.20160505_release
Hardware version	: ATJ2273_For_Disney_V3_20160523
Trademark	: N/A
Applicant	: Video Plus Print Company Ltd.
Address	: #1005, 10/F1, Hermes Commercial Centre, 4-4A Hillwood Road, TST, Kowloon, HongKong
Manufacturer	: Video Plus Print Company Ltd.
Address	: #1005, 10/F1, Hermes Commercial Centre, 4-4A Hillwood Road, TST, Kowloon, HongKong
Sample Type	: Prototype production

2.2. Tested Supporting System Details

No.	Description	Manufacturer	Model	Serial Number	Certification or DOC
1	Personal Computer	DELL	D11M	CN-0LV772-C0887-378-H8UR	DOC
2	Monitor	DELL	E2014Hf	CN-011HFV-72872-397-CHEM	DOC
3	USB Keyboard	ACER	SK-9625	KBUSB1580500037E0100	DOC
4	USB Mouse	ACER	MS.11200.014	M-UAY-ACR2	DOC
5.	Printer	HP	HP1020	CNCJ410726	DOC

2.3. Block Diagram of connection between EUT and simulators



Signal Cable Description of the above Support Units					
No.	Port Name	Cable	Length	Shielded (Yes or No)	Detachable (Yes or No)
(a)	USB Port	USB Cable	150CM	Yes(Shielding and foil shields)	Yes
(b)	VGA Port	VGA Cable	120CM	Yes(Shielding)	Yes
(C)	Serial Port	Serial Cable	150CM	Yes(Shielding)	Yes

EUT: Video Brochure

2.4. Test mode Description

No.	Test Mode
※1.	Exchange data with PC
2.	Playing
3.	/
Note: ※ is worst case mode for, so this report only reflected the worst mode.	

2.5. Test Facility

Shenzhen Alpha Product Testing Co., Ltd.

Building B, East Area of Nanchang Second, Industrial Zone, Gushu 2nd Road,
Bao'an, Shenzhen, China

March 25, 2015 File on Federal Communication Commission

Registration Number: 203110

July 18, 2014 Certificated by IC

Registration Number: 12135A

2.6. Measurement Uncertainty

(95% confidence levels, k=2)

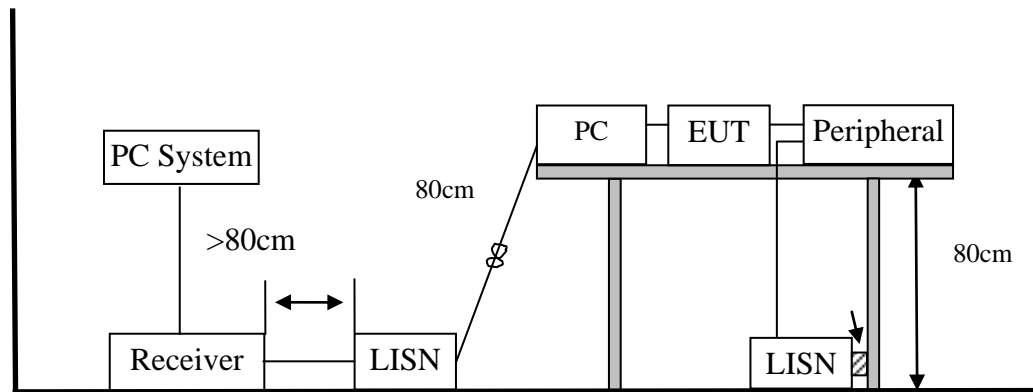
Test Item	Uncertainty
Uncertainty for Conduction emission test	2.71dB
Uncertainty for Radiation Emission test (<1G)	3.90 dB (Distance: 3m Polarize: V)
	3.92 dB (Distance: 3m Polarize: H)
Uncertainty for Radiation Emission test (>1G)	4.26 dB (Distance: 3m Polarize: V)
	4.28 dB (Distance: 3m Polarize: H)

3. POWER LINE CONDUCTED EMISSION TEST

3.1. Test Equipment

Item	Equipment	Manufacturer	Model No.	Serial No.	Last Cal.	Cal. Interval
1.	Test Receiver	Rohde & Schwarz	ESCI	101165	2016.01.17	1 Year
2.	L.I.S.N.#1	Schwarzbeck	NSLK8126	8126466	2016.01.17	1 Year
3.	L.I.S.N.#2	ROHDE&SCHWARZ	ENV216	101043	2016.01.17	1 Year
4.	Pulse Limiter	Schwarzbeck	9516F	9618	2016.01.17	1 Year
5	Cable	Resenberger	SUCOFLEX 104	MY6562/4	2016.01.17	1 Year

3.2. Block Diagram of Test Setup



3.3. Power Line Conducted Emission Test Limits

Frequency	Maximum RF Line Voltage	
	Quasi-Peak Level dB(μ V)	Average Level dB(μ V)
150kHz ~ 500kHz	66 ~ 56*	56 ~ 46*
500kHz ~ 5MHz	56	46
5MHz ~ 30MHz	60	50

- Notes:
1. Emission level=Read level + LISN factor-Preamplifier factor + Cable loss
 2. * Decreasing linearly with logarithm of frequency.
 3. The lower limit shall apply at the transition frequencies.

3.4.Configuration of EUT on Test

The following equipment are installed on Power Line Conducted Emission Test to meet the commission requirement and operating regulations in a manner which tends to maximize its emission characteristics in a normal application.

3.5.Operating Condition of EUT

- (1) Setup the EUT as shown as Section 3.2.
- (2) Turn on the power of all equipment.
- (3) Let the EUT work in test mode and 15 minutes before taking the test.

3.6.Test Procedure

- (1) The EUT was placed on a non-metallic table, 80cm above the ground plane. The EUT Power connected to the power mains through a line impedance stabilization network (L.I.S.N. 1#). This provided a 50-ohm coupling impedance for the EUT (Please refer to the block diagram of the test setup and photographs). The other peripheral devices power cord connected to the power mains through a line impedance stabilization network (L.I.S.N.#2). Both sides of power line were checked for maximum conducted interference. In order to find the maximum emission, the relative positions of equipments and all of the interface cables were changed according to ANSI C63.4:2014 on conducted Emission test.
- (2) The frequency range from 150kHz to 30MHz is checked, the bandwidth of test receiver (R&S TEST RECEIVER ESCI) is set at 9kHz.
- (3) The frequency range from 30MHz to 1000MHz was pre-scanned with a Peak detector and all final readings of measurement from Test Receiver are Quasi-Peak and Average values.
- (4) The test results are reported on Section 3.7.

3.7. Conducted Disturbance at Mains Terminals Test Results

EUT	: Video Brochure	Test Date	: 2016.07.06
M/N	: C7028	Temperature	: 25℃
Test Engineer	: Reak Yang	Humidity	: 51%
Test Mode	: Exchange data with PC		
Test Results	: PASS		
Note: 1. The test results are listed in next pages. 2. This mode is worst case mode, so this report only reflected the worst mode. 3. If the limits for the measurement with the average detector are met when using a receiver with a peak detector, the test unit shall be deemed to meet both limits and the measurement with the average detector and quasi-peak detector need not be carried out. 4. If the limits for the measurement with the average detector are met when using a receiver with a quasi-peak detector, the test unit shall be deemed to meet both limits and the measurement with the average detector need not be carried out.			

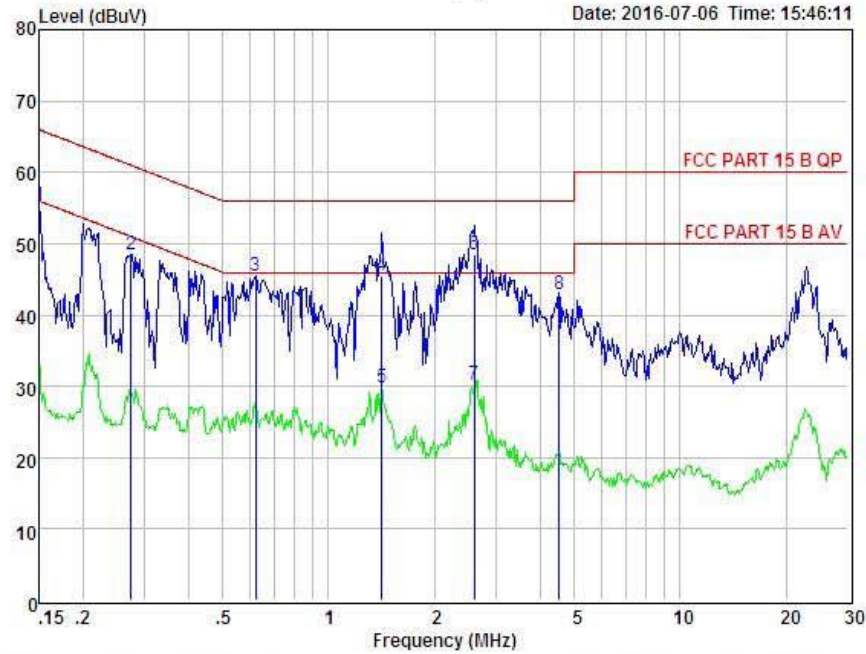


Shenzhen Alpha Product Testing Co., Ltd.
 Building B, East Area of Nanchang Second Industrial Zone,
 Gushu 2nd Road, Bao'an District, Shenzhen 518126, P.R. China
 Tel: +86-755-29766001 FAX: +86-755-86375565
 Website: http://www.a-lab.cn Email: service@a-lab.cn

Data: 9

File: E:\Test Data\2016.06.06.EM6 (12)

Date: 2016-07-06 Time: 15:46:11



Condition : FCC PART 15 B QP POL: NEUTRAL Temp: 25°C Hum: 51 %
 EUT :
 Model No :
 Test Mode :
 Power :
 Test Engineer :
 Remark :

Item	Freq MHz	Read Level dBuV	LISN Factor dB	Preamp Factor dB	Cable Loss dB	Level dBuV	Limit dBuV	Margin dBuV	Remark
1	0.150	45.62	0.03	-9.49	0.10	55.24	66.00	-10.76	Peak
2	0.274	38.89	0.03	-9.56	0.10	48.58	60.98	-12.40	Peak
3	0.621	35.81	0.03	-9.59	0.10	45.53	56.00	-10.47	Peak
4	1.418	35.63	0.05	-9.66	0.10	45.44	56.00	-10.56	QP
5	1.418	19.90	0.05	-9.66	0.10	29.71	46.00	-16.29	Average
6	2.594	38.53	0.06	-9.76	0.11	48.46	56.00	-7.54	QP
7	2.594	20.40	0.06	-9.76	0.11	30.33	46.00	-15.67	Average
8	4.525	32.69	0.09	-9.90	0.12	42.80	56.00	-13.20	Peak

Remark: Level = Read Level + LISN Factor - Preamp Factor + Cable Loss

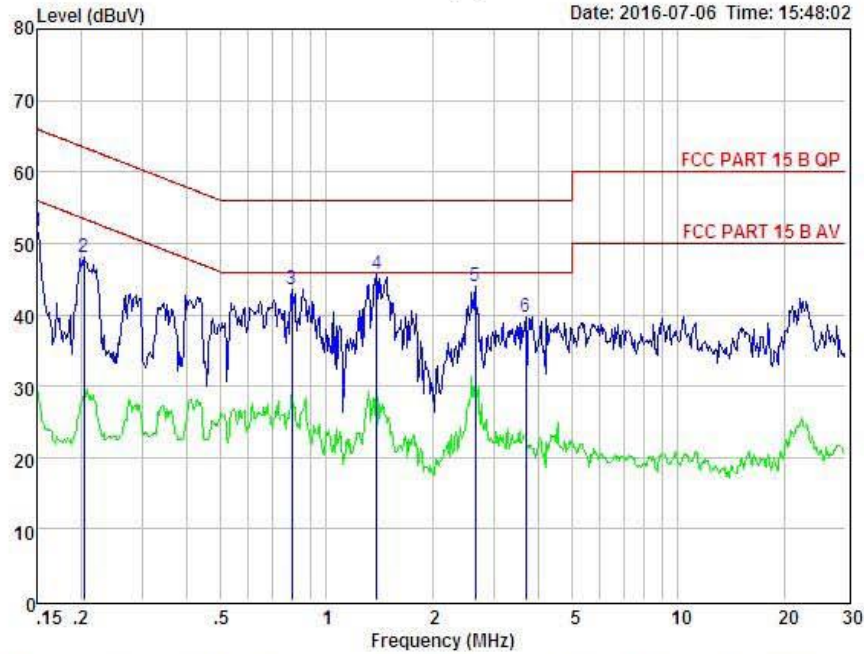


Shenzhen Alpha Product Testing Co., Ltd.
 Building B, East Area of Nanchang Second Industrial Zone,
 Gushu 2nd Road, Bao'an District, Shenzhen 518126, P.R. China
 Tel: +86-755-29766001 FAX: +86-755-86375565
 Website: <http://www.a-lab.cn> Email: service@a-lab.cn

Data: 11

File: E:\Test Data\2016.06.06.EM6 (12)

Date: 2016-07-06 Time: 15:48:02



Condition : FCC PART 15 B QP POL: LINE Temp: 25°C Hum: 51 %
 EUT :
 Model No :
 Test Mode :
 Power :
 Test Engineer :
 Remark :

Item	Freq MHz	Read Level dBuV	LISN Factor dB	Preamp Factor dB	Cable Loss dB	Level dBuV	Limit dBuV	Margin dBuV	Remark
1	0.150	41.99	0.03	-9.49	0.10	51.61	66.00	-14.39	Peak
2	0.204	38.45	0.03	-9.52	0.10	48.10	63.45	-15.35	Peak
3	0.796	33.84	0.00	-9.60	0.10	43.54	56.00	-12.46	Peak
4	1.388	35.90	0.05	-9.66	0.10	45.71	56.00	-10.29	Peak
5	2.650	33.94	0.06	-9.76	0.11	43.87	56.00	-12.13	Peak
6	3.681	29.70	0.08	-9.86	0.12	39.76	56.00	-16.24	Peak

Remark: Level = Read Level + LISN Factor - Preamp Factor + Cable Loss

4. RADIATED EMISSION TEST

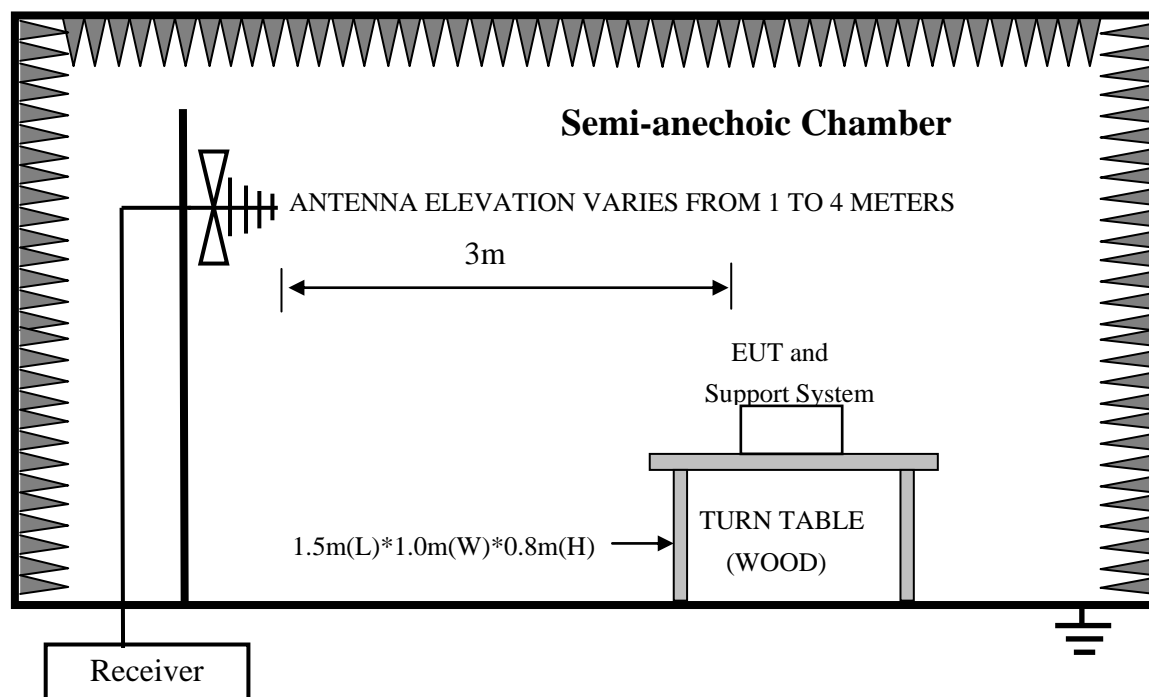
4.1. Test Equipment

For frequency range 30MHz~1GHz (At Semi Anechoic Chamber)						
Item	Equipment	Manufacturer	Model No.	Serial No.	Last Cal.	Cal. Interval
1	Test Receiver	Rohde&Schwarz	ESCI	101165	2016.01.17	1 Year
2	Amplifier	HP	HP8347A	2834A00455	2016.01.19	1 Year
3	Bilog Antenna	Schwarzbeck	VULB 9168	9168-438	2016.01.19	2 Year
4	Cable	Resenberger	SUCOFLEX 104	309972/4	2016.01.17	1 Year

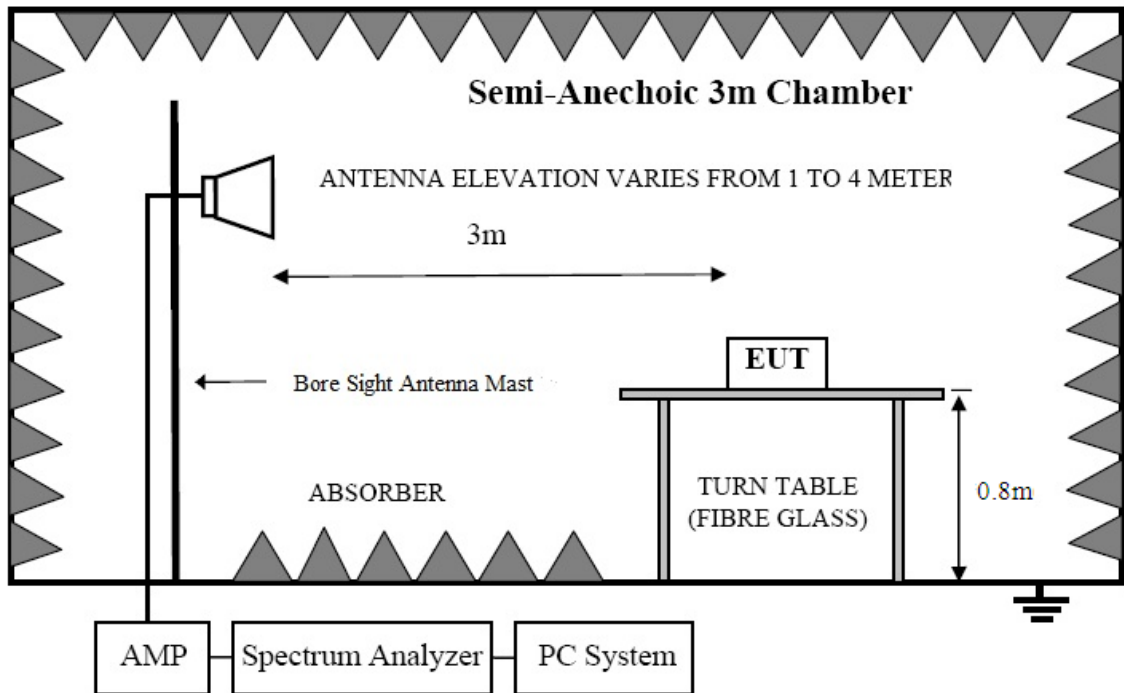
For frequency range above 1GHz (At Semi Anechoic Chamber (3m))						
Item	Equipment	Manufacturer	Model No.	Serial No.	Last Cal.	Cal. Interval
1	Spectrum Analyzer	Agilent	E4407B	MY49510055	2016.01.17	1 Year
2	Horn Antenna	Schwarzbeck	BBHA 9120 D	BBHA 9120 D(1201)	2016.01.21	1 Year
3	Amplifier	Agilent	8449B	3008A02664	2016.01.19	1 Year
4	Cable	Resenberger	SUCOFLEX 104	329112/4	2016.01.17	1 Year

4.2. Block Diagram of Test Setup

In Semi Anechoic Chamber (3m) Test Setup Diagram for 30MHz~1000MHz



In Semi Anechoic Chamber (3m) Test Setup Diagram for Above 1GHz



4.3.Radiated Emission Limit

Frequency MHz	Distance (Meters)	Field Strengths Limits dB(μ V)/m
30 ~ 88	3	40.0
88 ~ 216	3	43.5
216 ~ 960	3	46.0
960 ~ 1000	3	54.0
Above 1GHz	3	74(Peak) 54(Average)

- Notes:
1. Emission level = Read level + Antenna Factor - Preamp Factor + Cable Loss
 2. The smaller limit shall apply at the cross point between two frequency bands.
 3. Distance is the distance in meters between the measuring instrument, antenna and the closest point of any part of the device or system.
 4. Frequency range of radiated measurements:

Highest frequency generated or used in the device or on which the device operates or tunes (MHz)	Upper frequency of measurement range (MHz)
Below 1.705	30
1.705-108	1000
108-500	2000
500-1000	5000
Above 1000	5th harmonic of the highest frequency or

	40 GHz, whichever is lower.
--	-----------------------------

4.4.Configuration of EUT on Test

The following equipment are installed on Radiated Emission Test to meet the commission requirements and operating regulations in a manner that tends to maximize its emission characteristics in normal application.

4.5.Operating Condition of EUT

- (1) Setup the EUT as shown as Section 4.2.
- (2) Turn on the power of all equipment.
- (3) Let the EUT work in test mode and 15 minutes before taking the test.

4.6.Test Procedure

- (1) The EUT was placed on a non-metallic table, 80 cm above the ground plane inside a semi-anechoic chamber. An antenna was located 3m from the EUT on an adjustable mast. A pre-scan was first performed in order to find prominent radiated emissions. For final emissions measurements at each frequency of interest, the EUT were rotated and the antenna height was varied between 1m and 4m in order to maximize the emission. Measurements in both horizontal and vertical polarities were made and the data was recorded. In order to find the maximum emission, the relative positions of equipments and all of the interface cables were changed according to ANSI C63.4:2014 on Radiated Emission test.
- (2) For the radiated emission test above 1GHz:
Place the measurement antenna away from each area of the EUT determined to be a source of emissions at the specified measurement distance, while keeping the measurement antenna aimed at the source of emissions at each frequency of significant emissions, with polarization oriented for maximum response. The measurement antenna may have to be higher or lower than the EUT, depending on the radiation pattern of the emission and staying aimed at the emission source for receiving the maximum signal. The final measurement antenna elevation shall be that which maximizes the emissions. The measurement antenna elevation for maximum emissions shall be restricted to a range of heights of from 1 m to 4 m above the ground or reference ground plane.
- (3) The frequency range from 30MHz to 1000MHz is checked, the bandwidth of test receiver (R&S TEST RECEIVER ESCI) is set at 120kHz.
- (4) The frequency range from above 1GHz is checked, the bandwidth of spectrum analyzer (Analyzer Spectrum Analyzer E4407B) is set at 1MHz.
- (5) The frequency range from 30MHz to 1000MHz was pre-scanned with a peak detector and all final readings of measurement from Test Receiver are Quasi-Peak values, the frequency range from 1GHz to 6GHz was pre-scanned with a peak detector and all final readings of measurement from Spectrum Analyzer are peak and average values checked, all measurement distance is 3m in 3m semi anechoic chamber.
- (6) The test results are reported on Section 4.7.

4.7.Radiated Disturbance Test Results

Frequency Range : 30MHz~1000MHz	
EUT : Video Brochure	Test Date : 2016.07.04
M/N : C7028	Temperature : 23℃
Test Engineer : Reak Yang	Humidity : 56%
Test Mode : Exchange data with PC	
Test Results : PASS	
Note: 1. The test results are listed in next pages. 2. This mode is worst case mode, so this report only reflected the worst mode. 3. If the limits for the measurement with the quasi-peak detector are met when using a receiver with a peak detector, the test unit shall be deemed to meet both limits and the measurement with the quasi-peak detector need not be carried out.	

Frequency Range : Above 1GHz	
EUT : Video Brochure	Test Date : 2016.07.04
M/N : C7028	Temperature : 23℃
Test Engineer : Reak Yang	Humidity : 56%
Test Mode : Exchange data with PC	
Test Results : PASS	
Note: 1. The test results are listed in next pages. 2. This mode is worst case mode, so this report only reflected the worst mode. 3. If the limits for the measurement with the average detector are met when using a receiver with a peak detector, the test unit shall be deemed to meet both limits and the measurement with the average detector need not be carried out.	

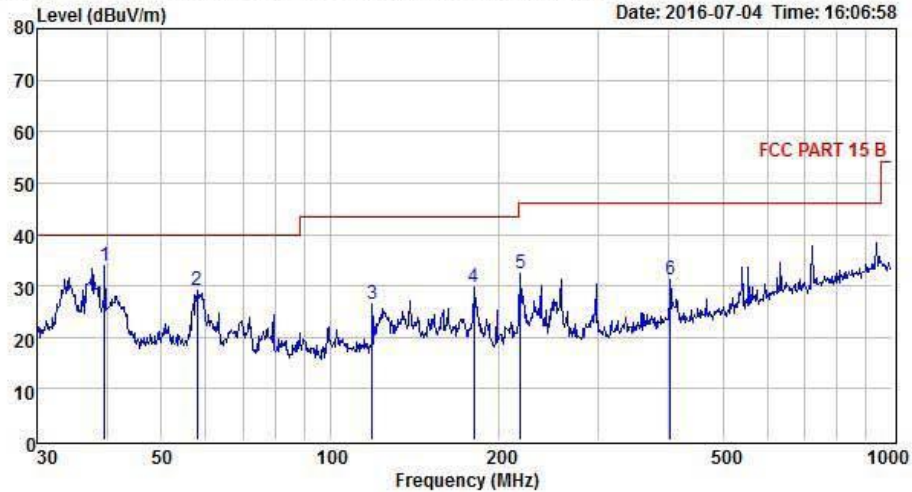


Shenzhen Alpha Product Testing Co., Ltd.
 Building B, East Area of Nanchang Second Industrial Zone,
 Gushu 2nd Road, Bao'an District, Shenzhen 518126, P.R. China
 Tel: +86-755-29766001 FAX: +86-755-86375565
 Website: <http://www.a-lab.cn> Email: service@a-lab.cn

Data: 17

File: F:\TEST DATA 2016\G\谷道\2016.07.04.EM6 (18)

Date: 2016-07-04 Time: 16:06:58



Condition : FCC PART 15 B POL: VERTICAL
 EUT :
 Model No :
 Test Mode :
 Power :
 Test Engineer :
 Remark :
 Temp : 23C
 Hum : 56%

Item	Freq MHz	Read Level dBuV	Antenna Factor dB	Preamp Factor dB	Cable Loss dB	Level dBuV	Limit dBuV	Margin dBuV	Remark
1	39.58	50.50	14.07	30.84	0.17	33.90	40.00	-6.10	Peak
2	57.80	46.98	12.91	30.89	0.23	29.23	40.00	-10.77	Peak
3	118.60	43.80	12.06	29.74	0.35	26.47	43.50	-17.03	Peak
4	180.02	46.74	11.68	29.01	0.47	29.88	43.50	-13.62	Peak
5	218.31	49.65	10.53	28.45	0.63	32.36	46.00	-13.64	Peak
6	403.25	42.88	14.84	27.30	0.72	31.14	46.00	-14.86	Peak

Remark: Level = Read Level + Antenna Factor - Preamp Factor + Cable Loss

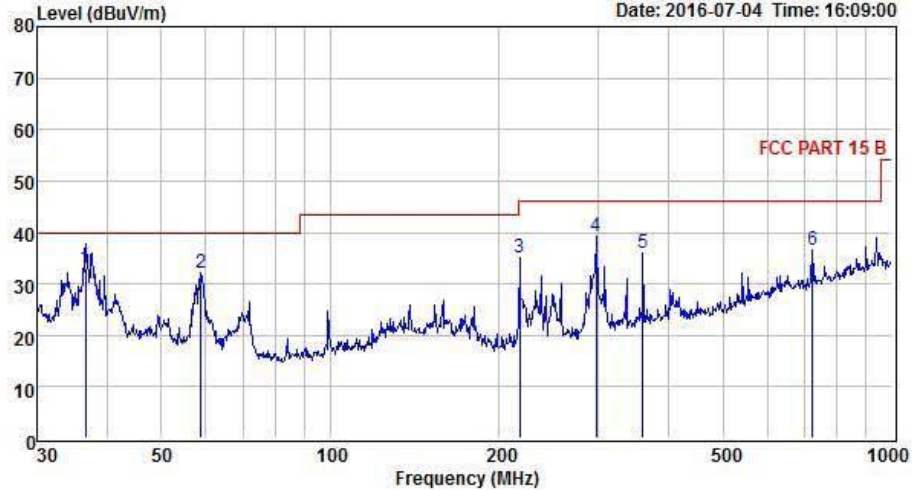


Shenzhen Alpha Product Testing Co., Ltd.
 Building B, East Area of Nanchang Second Industrial Zone,
 Gushu 2nd Road, Bao'an District, Shenzhen 518126, P.R. China
 Tel: +86-755-29766001 FAX: +86-755-86375565
 Website: <http://www.a-lab.cn> Email: service@a-lab.cn

Data: 18

File: F:\TEST DATA 2016\G\谷道\2016.07.04.EM6 (18)

Date: 2016-07-04 Time: 16:09:00



Condition : FCC PART 15 B POL: HORIZONTAL
 EUT :
 Model No :
 Test Mode :
 Power :
 Test Engineer :
 Remark :
 Temp : 23C
 Hum : 56%

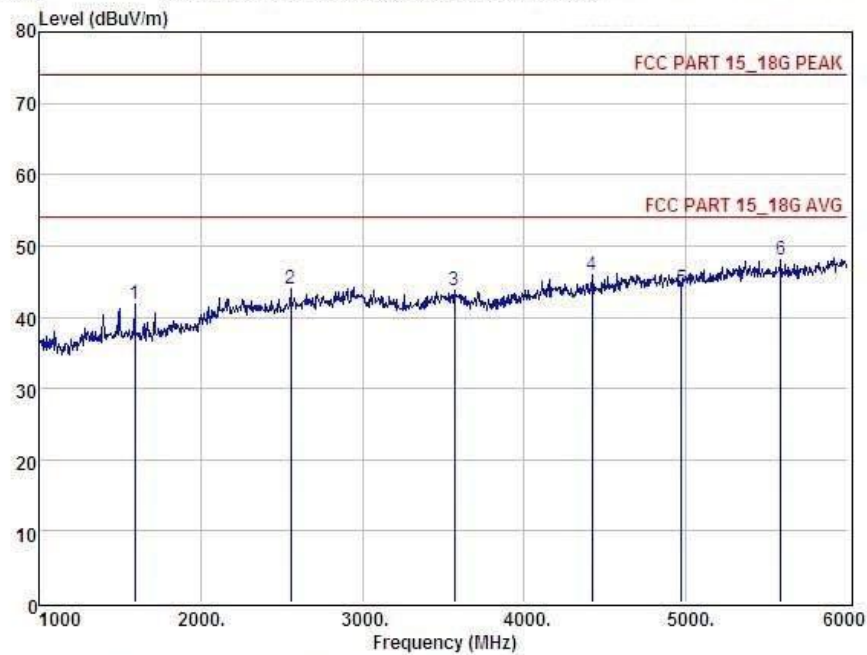
Item	Freq MHz	Read Level dBuV	Antenna Factor dB	Preamp Factor dB	Cable Loss dB	Level dBuV	Limit dBuV	Margin dBuV	Remark
1	36.64	50.23	13.39	30.83	0.10	32.89	40.00	-7.11	QP
2	58.82	50.09	12.75	30.89	0.32	32.27	40.00	-7.73	Peak
3	217.54	52.29	10.53	28.46	0.59	34.95	46.00	-11.05	Peak
4	297.22	53.58	12.76	28.03	0.94	39.25	46.00	-6.75	Peak
5	360.45	48.92	14.03	27.65	0.66	35.96	46.00	-10.04	Peak
6	721.73	41.16	19.92	25.69	1.26	36.65	46.00	-9.35	Peak

Remark: Level = Read Level + Antenna Factor - Preamp Factor + Cable Loss



Shenzhen Alpha Product Testing Co., Ltd.
 Building B, East Area of Nanchang Second Industrial Zone,
 Gushu 2nd Road, Bao'an District, Shenzhen 518126, P.R. China
 Tel: +86-755-29766001 FAX: +86-755-86375565
 Website: <http://www.a-lab.cn> Email: service@a-lab.cn

Data: 8 File: F:\TEST DATA 2016\G\谷道\2016.07.04.EM6 (18)



Condition : FCC PART 15_18G PEAK 3m POL: VERTICAL
 EUT :
 Model No :
 Test Mode :
 Power :
 Test Engineer :
 Remark :
 Temp : 23C
 Hum : 56%

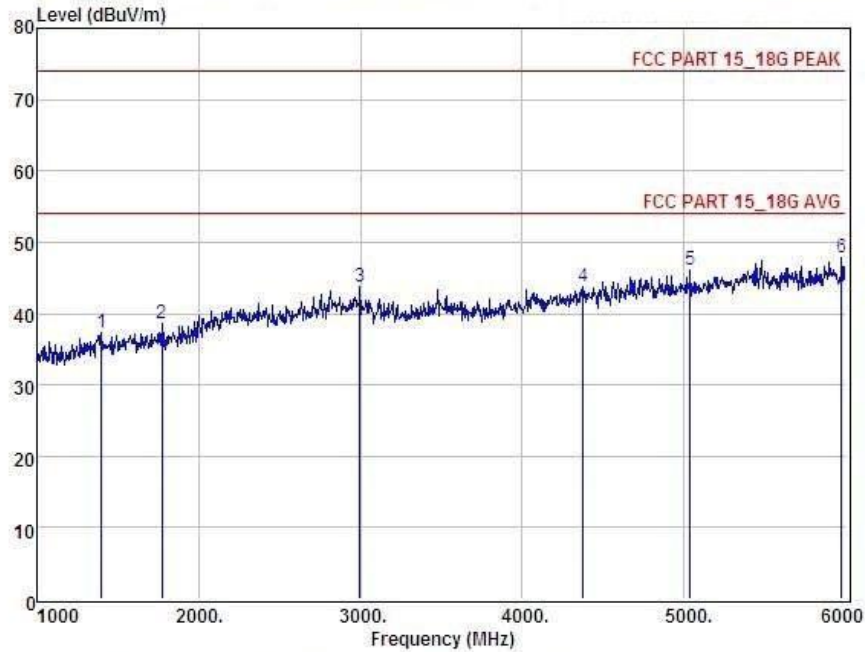
Item	Freq MHz	Read Level dBuV	Antenna Factor dB	Preamp Factor dB	Cable Loss dB	Level dBuV	Limit dBuV	Margin dBuV	Remark
	11595.00	48.76	24.86	34.74	3.05	41.93	74.00	-32.07	Peak
	22555.00	47.12	27.67	34.98	4.06	43.87	74.00	-30.13	Peak
	33570.00	44.99	28.69	34.90	4.90	43.68	74.00	-30.32	Peak
	44420.00	44.44	30.42	34.49	5.45	45.82	74.00	-28.18	Peak
	54970.00	40.64	31.53	34.05	5.80	43.92	74.00	-30.08	Peak
	65585.00	43.31	32.01	33.53	6.18	47.97	74.00	-26.03	Peak

Remark: Level = Read Level + Antenna Factor - Preamp Factor + Cable Loss



Shenzhen Alpha Product Testing Co., Ltd.
 Building B, East Area of Nanchang Second Industrial Zone,
 Gushu 2nd Road, Bao'an District, Shenzhen 518126, P.R. China
 Tel: +86-755-29766001 FAX: +86-755-86375565
 Website: <http://www.a-lab.cn> Email: service@a-lab.cn

Data: 7 File: F:\TEST DATA 2016\G\谷道\2016.07.04.EM6 (18)



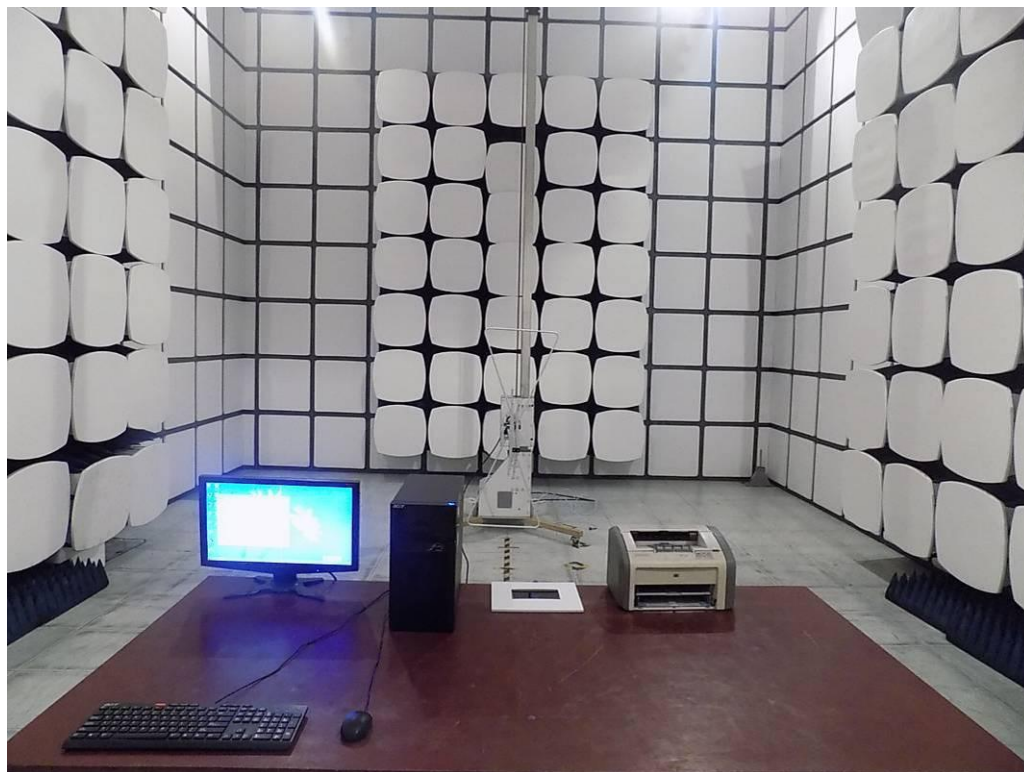
Condition : FCC PART 15_18G PEAK 3m POL: HORIZONTAL
 EUT :
 Model No :
 Test Mode :
 Power :
 Test Engineer :
 Remark :
 Temp : 23C
 Hum : 56%

Item	Freq MHz	Read Level dBuV	Antenna Factor dB	Preamp Factor dB	Cable Loss dB	Level dBuV	Limit dBuV	Margin dBuV	Remark
	11400.00	44.30	25.14	34.82	2.68	37.30	74.00	-36.70	Peak
	21775.00	45.21	24.92	34.83	3.38	38.68	74.00	-35.32	Peak
	32995.00	46.02	28.20	34.98	4.43	43.67	74.00	-30.33	Peak
	44375.00	42.42	30.34	34.51	5.42	43.67	74.00	-30.33	Peak
	55040.00	42.76	31.58	33.99	5.85	46.20	74.00	-27.80	Peak
	65975.00	42.42	32.75	33.71	6.40	47.86	74.00	-26.14	Peak

Remark: Level = Read Level + Antenna Factor - Preamp Factor + Cable Loss

5. PHOTOGRAPH

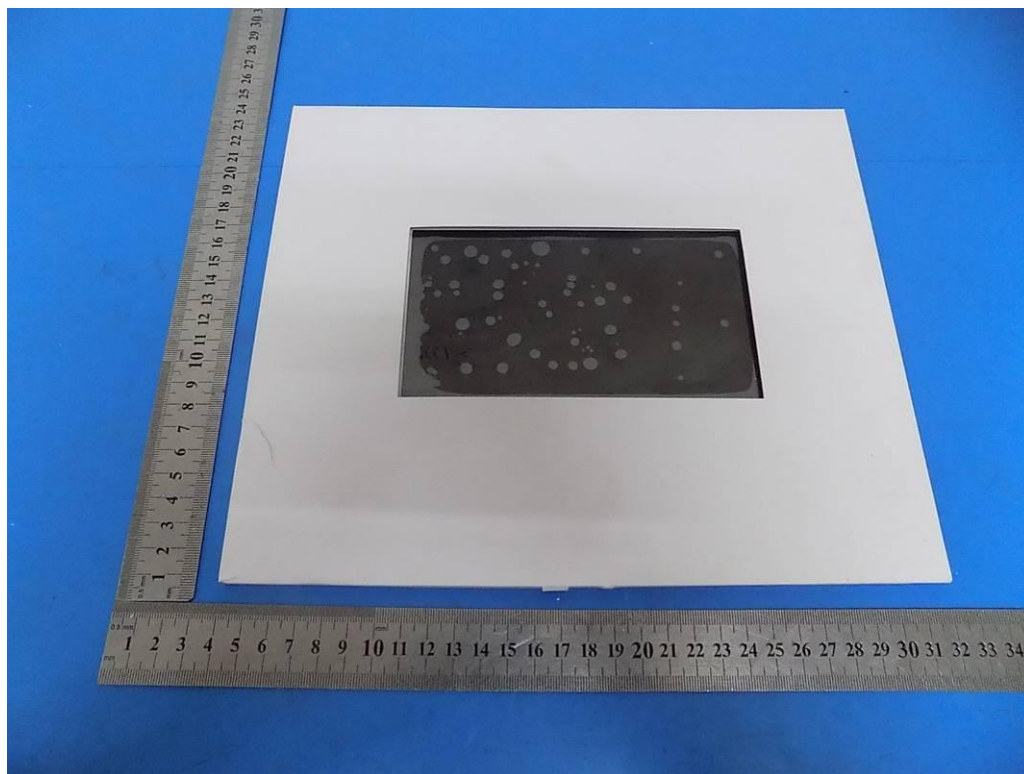
5.1.Photos of Radiated Emission Test (In Semi Anechoic Chamber)



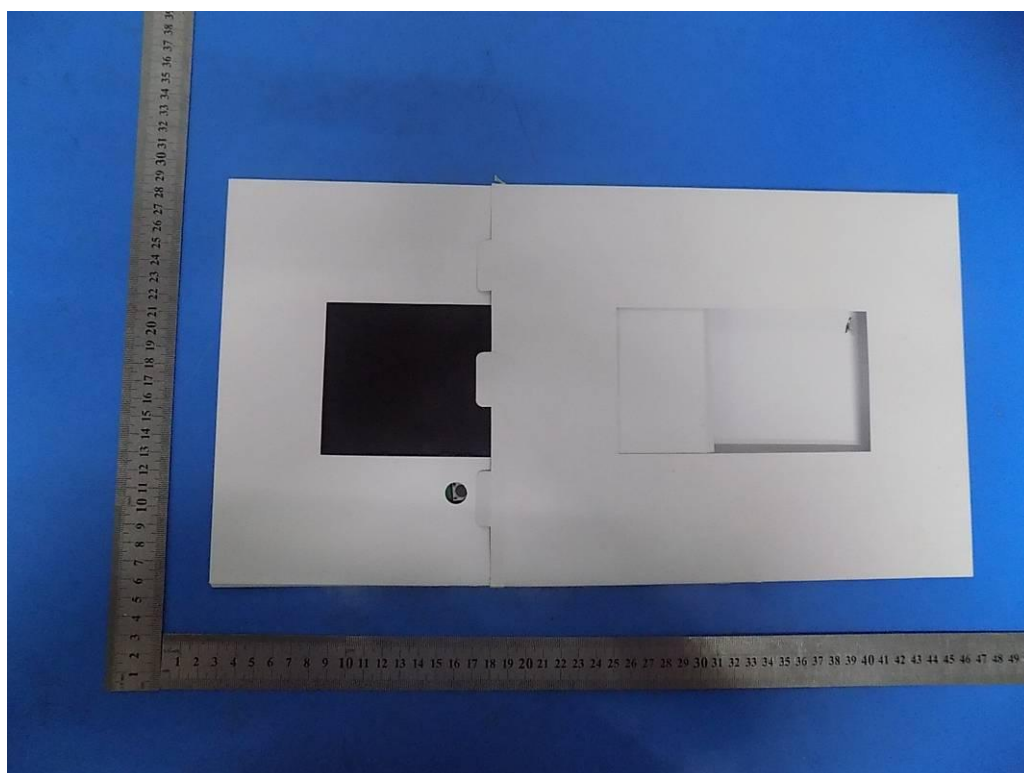
5.2.Photos of Power Line Conducted Emission Test



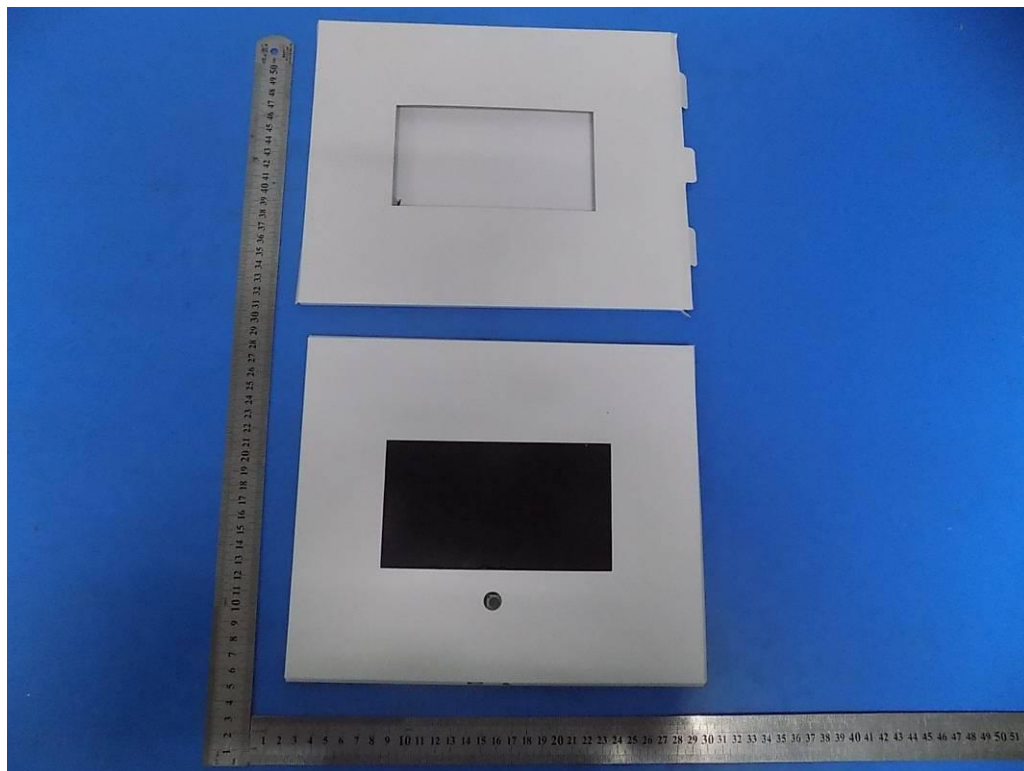
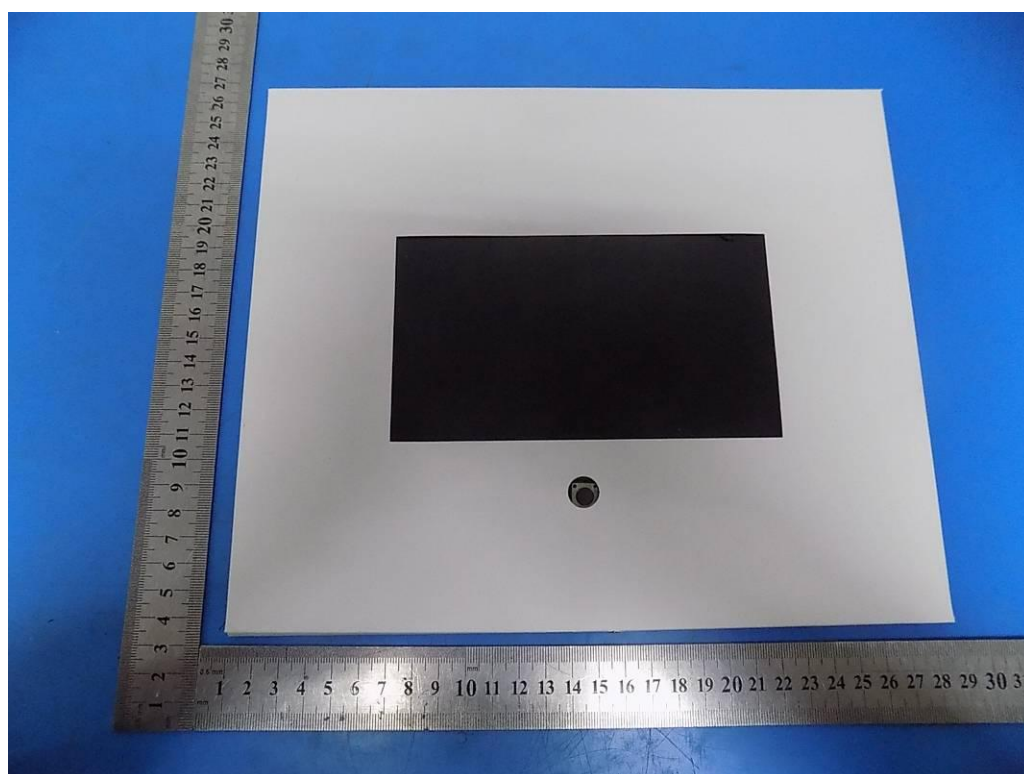
6. PHOTOS OF THE EUT

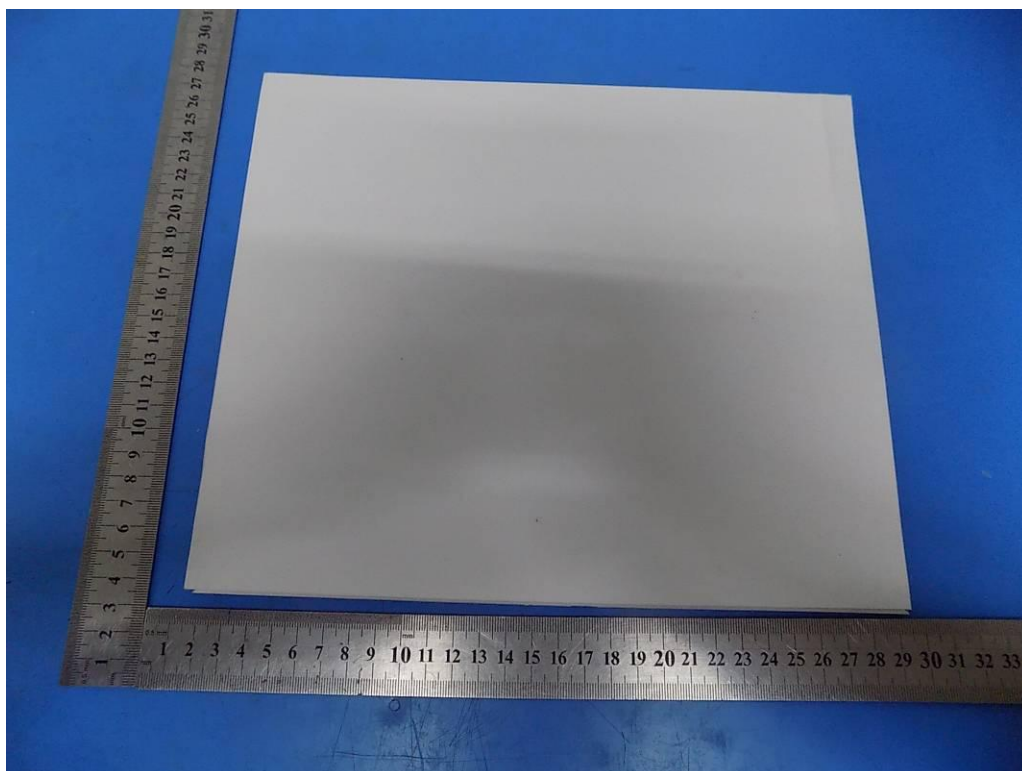
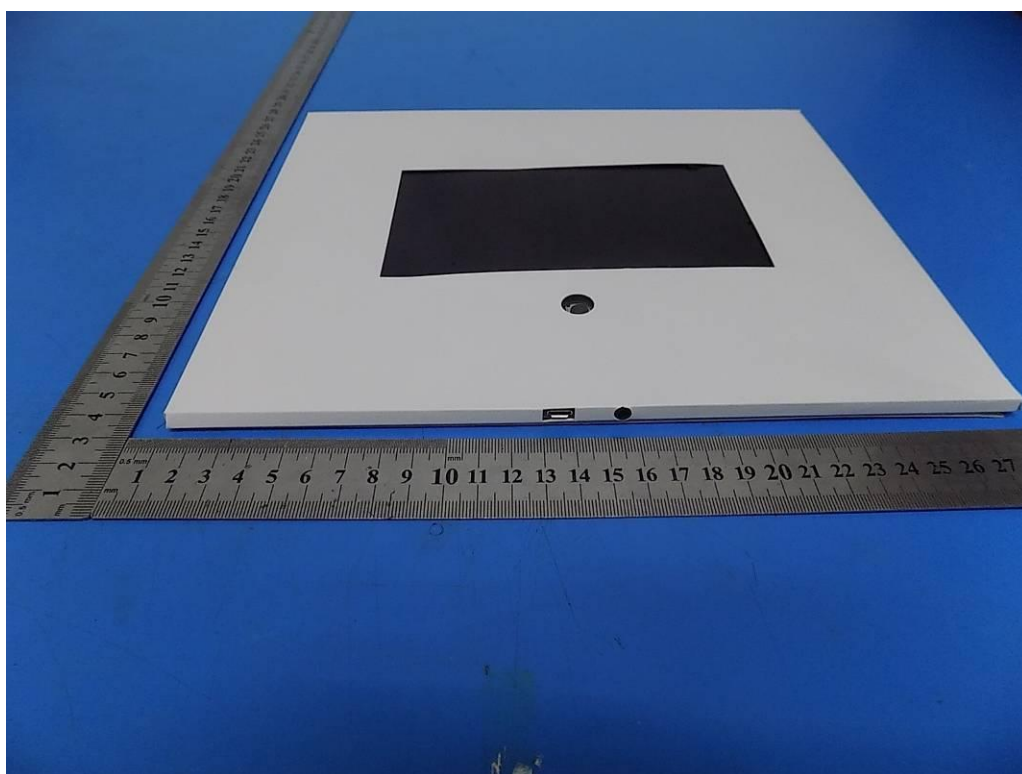


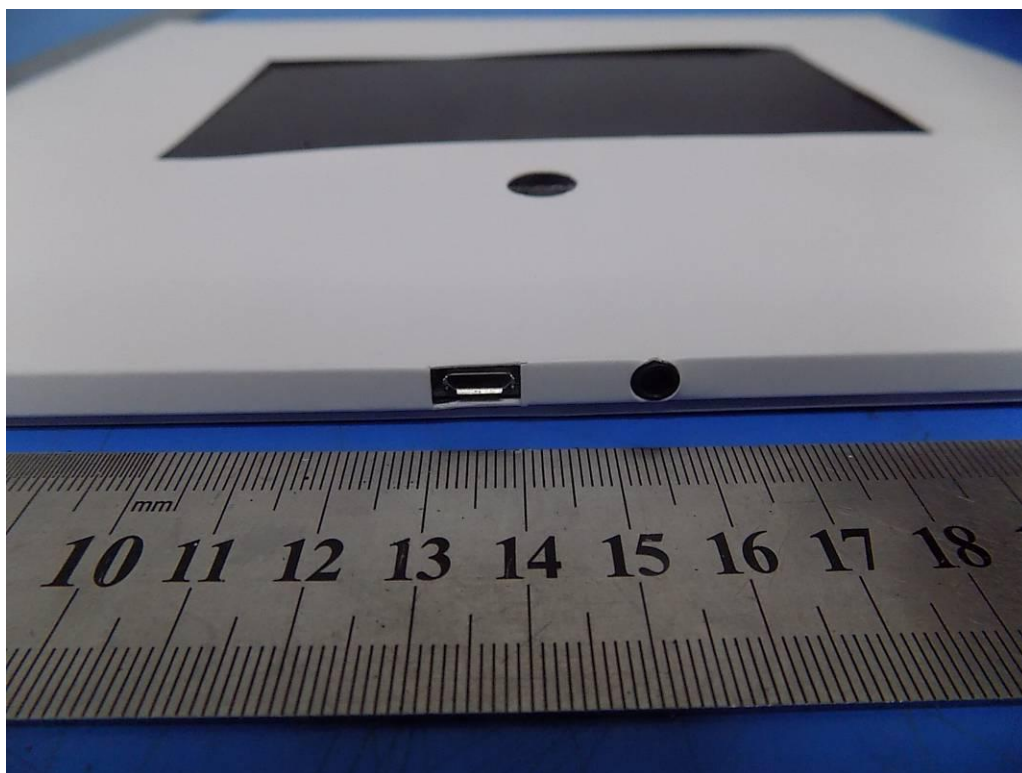
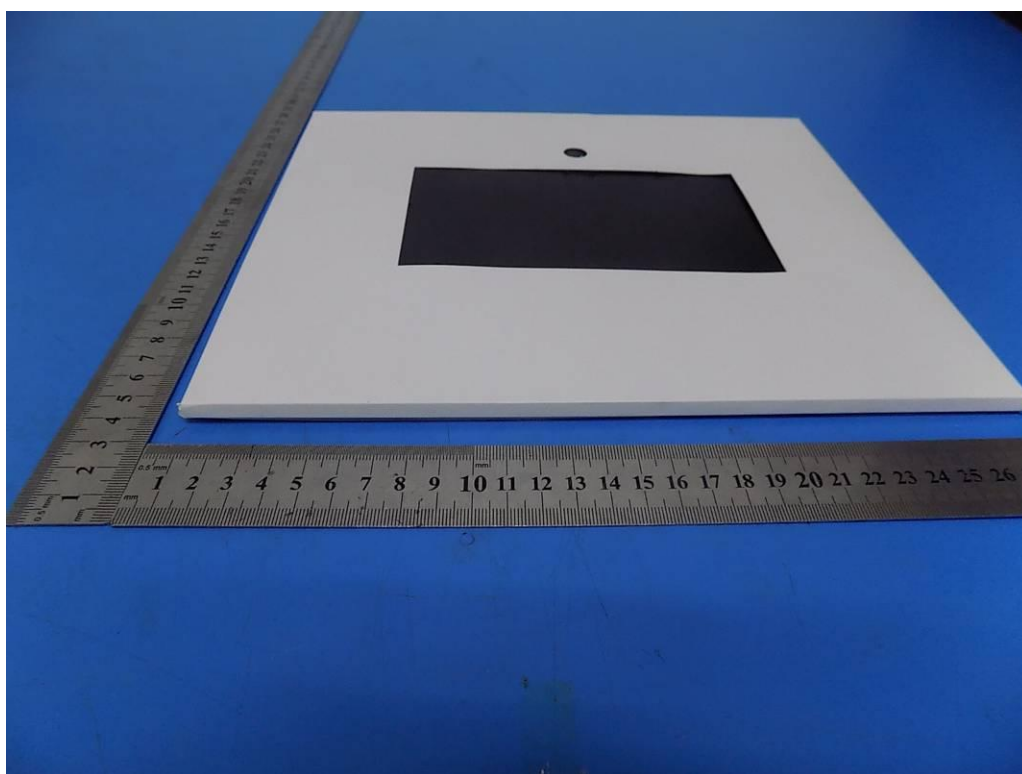
EUT View

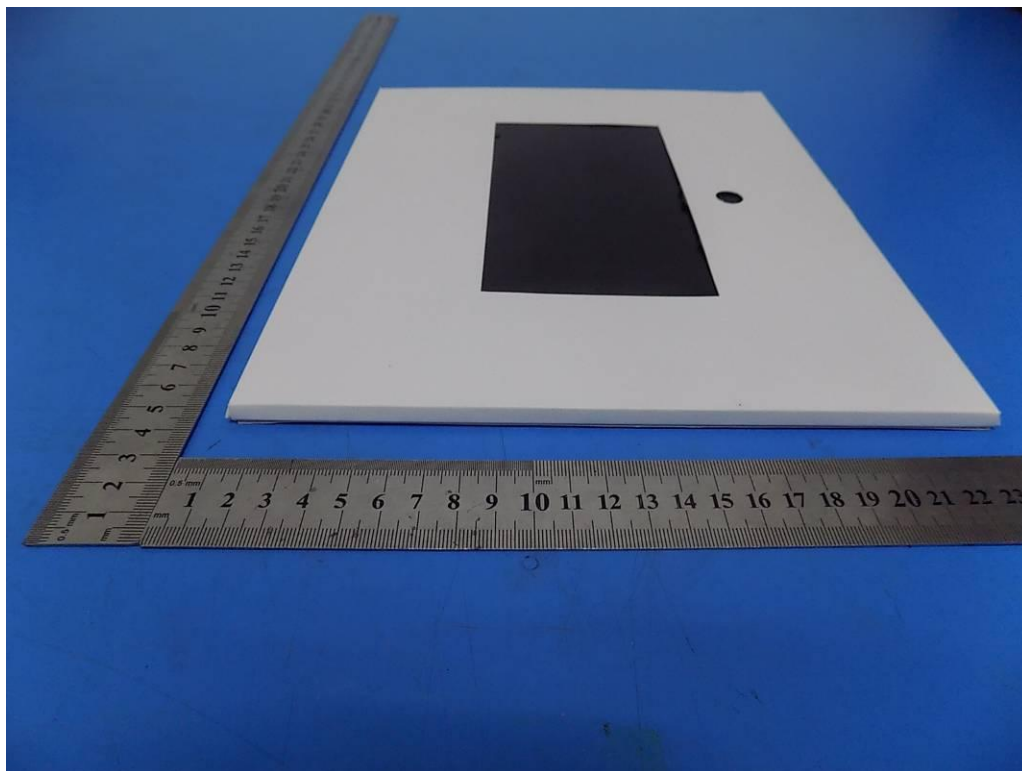
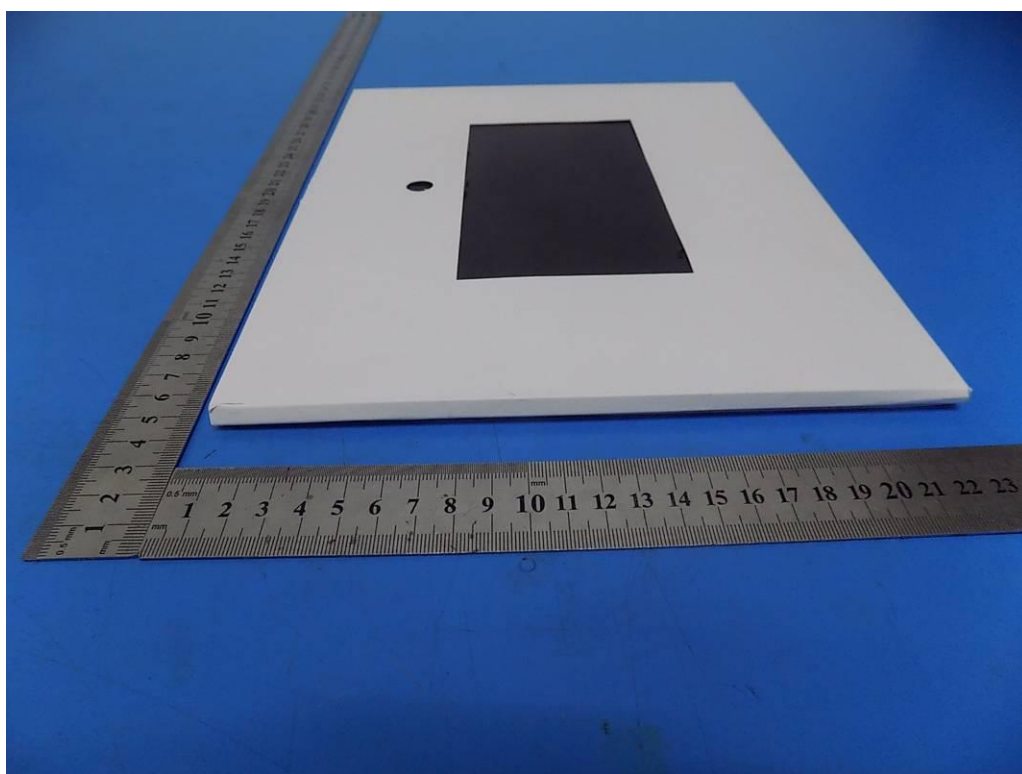


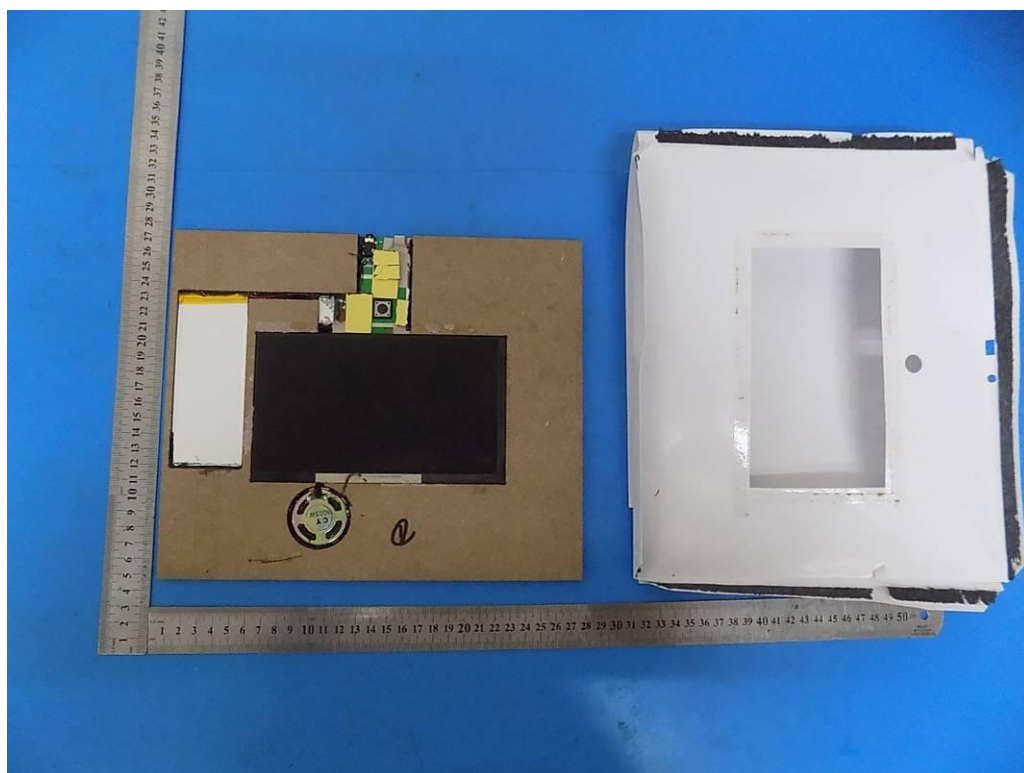
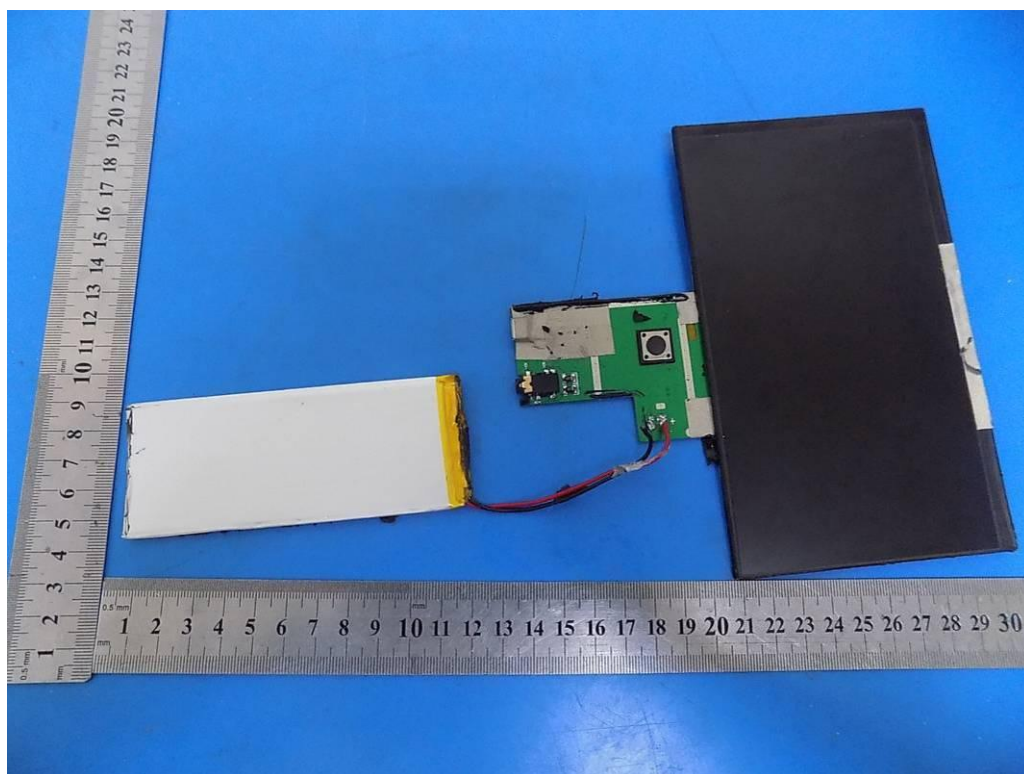
EUT View

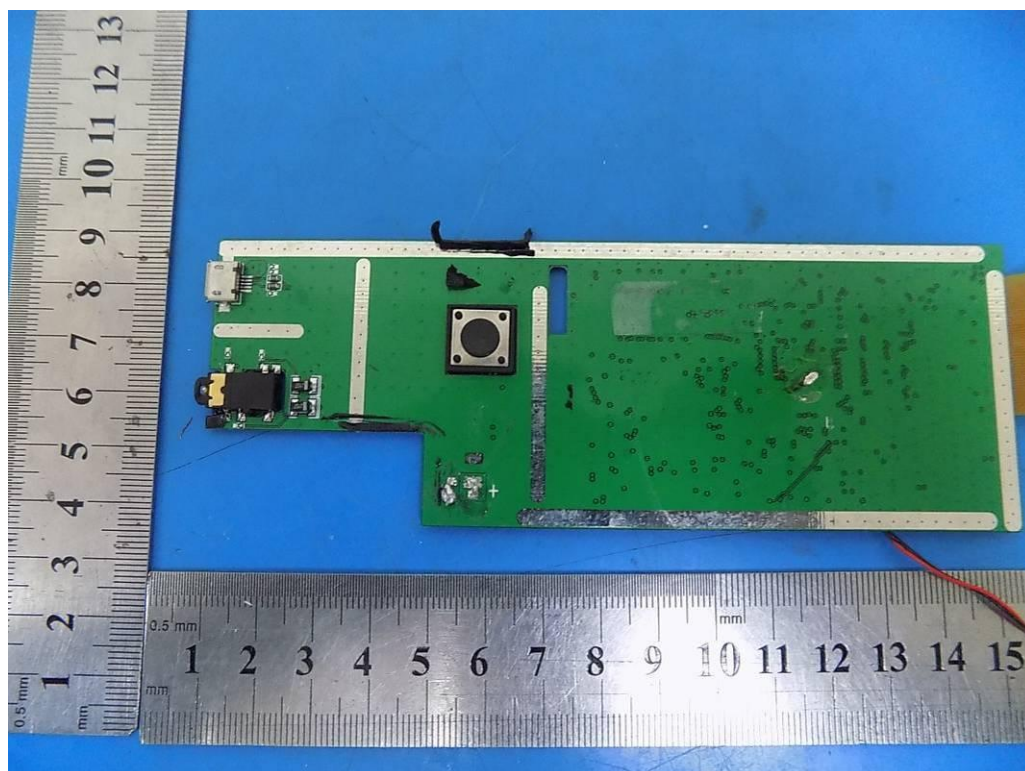
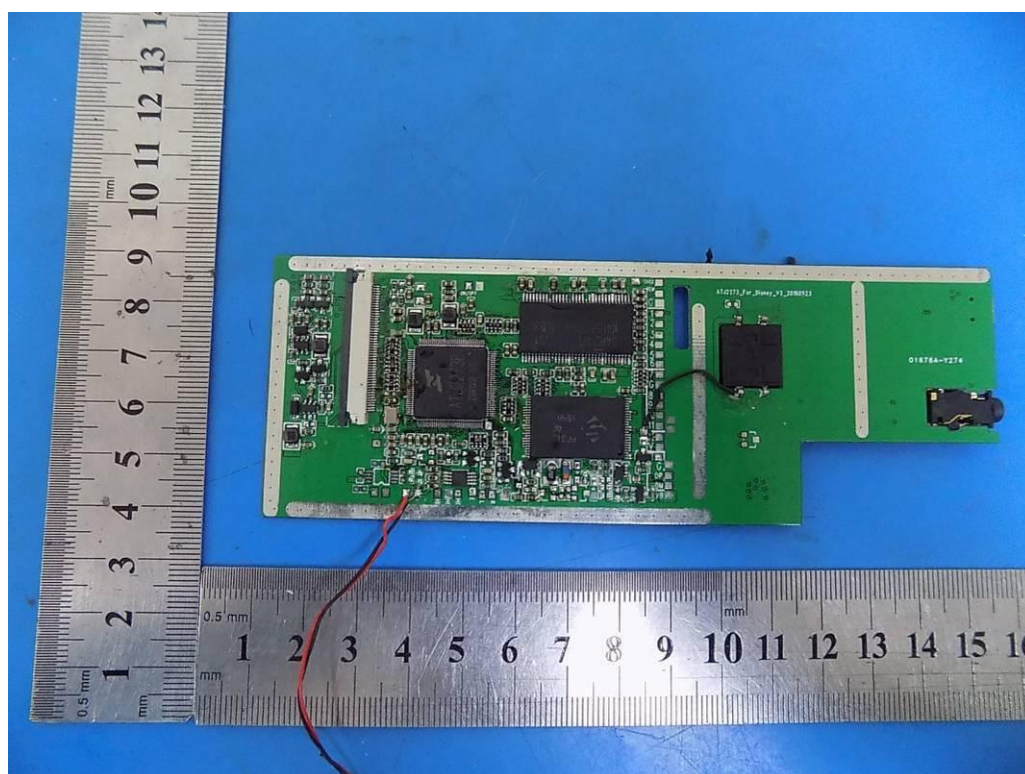
**EUT View****EUT View**

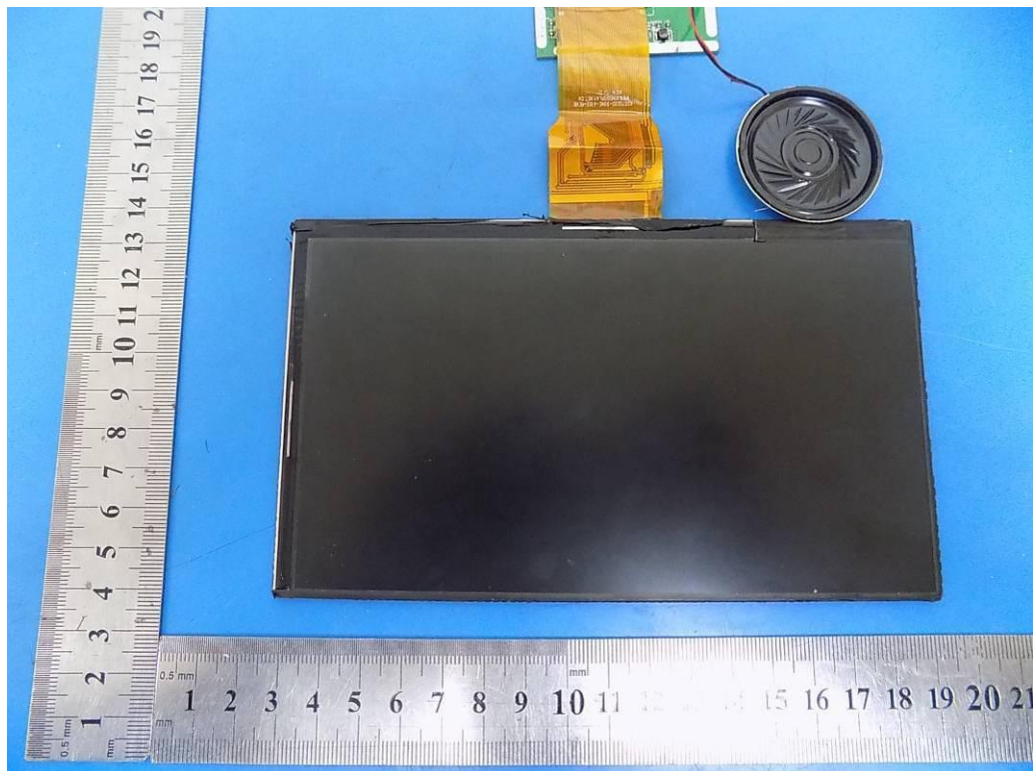
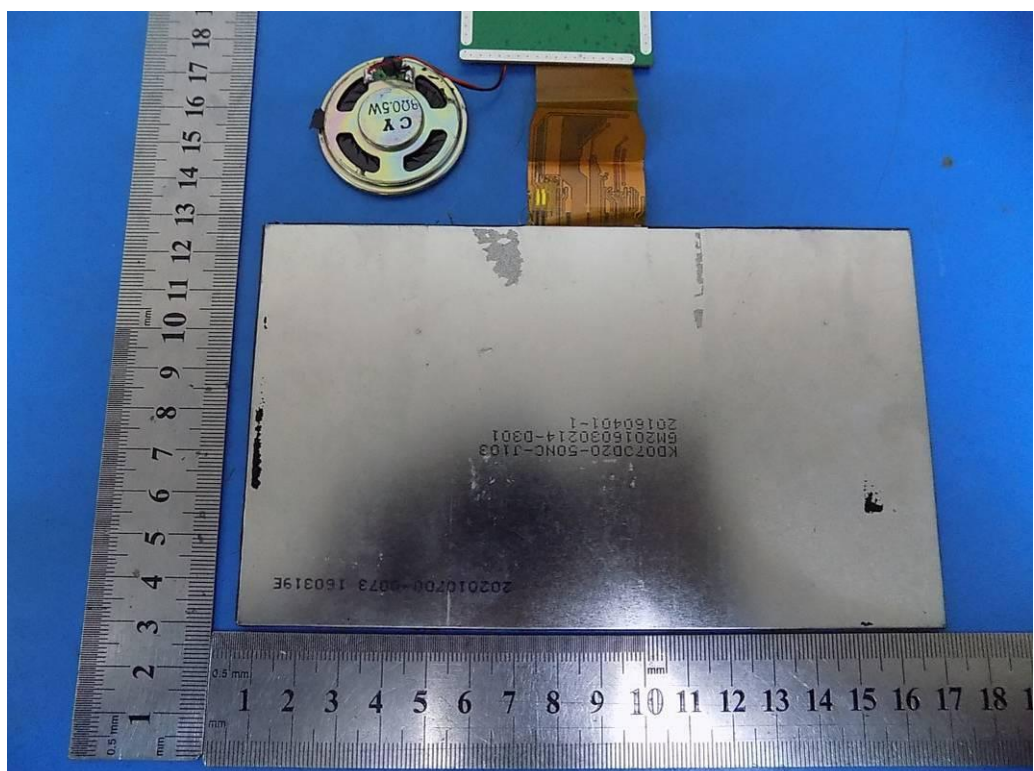
**EUT View****EUT View**

**EUT View****EUT View**

**EUT View****EUT View**

**EUT View****EUT View**

**EUT View****EUT View**

**EUT View****EUT View**

-----END OF REPORT-----