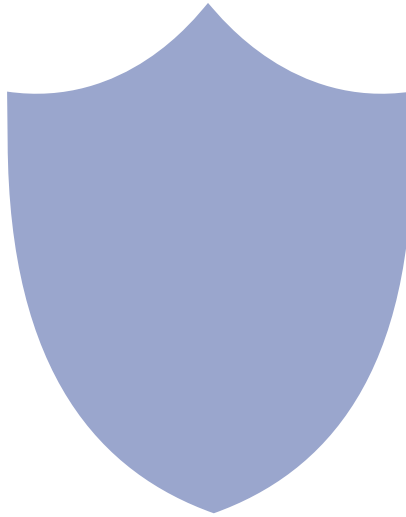


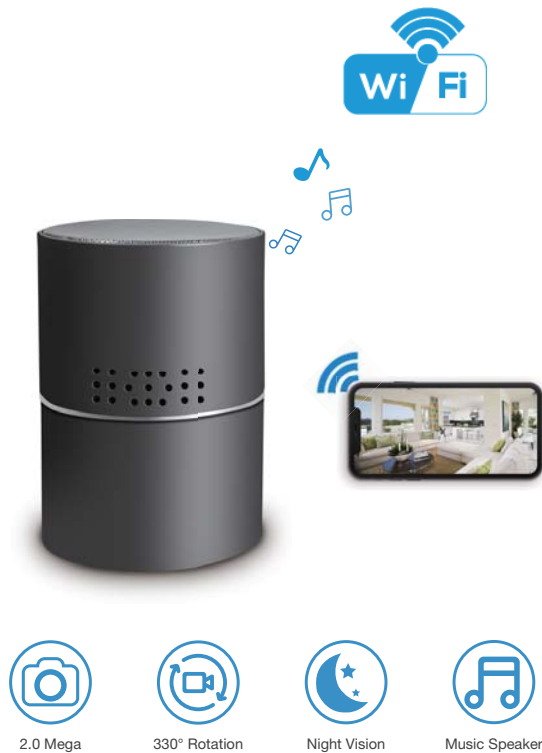
Full HD 1080P Stereo Speaker Wi-Fi Security Camera

User Manual
Version: August, 2018



Contents

Quick Guide.....	P2
Overview.....	P3
Packing List.....	P3
Product Structure	P4
Speaker Operation	P5
Camera Part Setting.....	P6
Camera name and password setting.....	P10
App Introduction.....	P11
PC Setting(LAN).....	P13
PC Setting(WAN).....	P15
Specifications.....	P16
FAQ.....	P16



1

Quick guide of Wi-Fi camera

1. Download the free app **Pro iCam** from App Store or Google Play;
2. Plug the device into a wall outlet using the power cord
On the back of the device use the ON/OFF switch to turn the device on. On the back of the unit a light will flash red and blue slowly;
3. On your smartphone open the WiFi settings. Search and connect to the device, with WiFi name: CM#####. Wait until your smartphone shows that it is connected to the Wifi;
4. Open the APP, press top right "🔍" icon → Select camera → Press Ok → The camera is now online;
TIPS: 1. Select **【Change】** to change device password for security **【default: 8888】** ;
2. After this step, P2P mode is enabled and the user can check video locally when there is no Wifi.
5. Press the gear icon ⚙️ → Device Settings → Wi-Fi Config → Select your Wi-Fi → Input password → Press Ok;
6. Quit the app, wait 30 seconds. Device will restart automatically and connect to your Wi-Fi
(The light on the back will be solid red and slowly blinking blue);
7. Enter APP to check live video locally or remotely anywhere.

2

Overview

The Full HD 1080P Stereo Speaker Wi-Fi Security Camera is a powerful Wi-Fi P2P IP camera for home and business security, which has a professional wireless stereo speaker.

It can be easily connected to Wi-Fi and allowing the user to watch live video, or remotely take photos and video with the app from anywhere; Supports Point to Point (P2P) function, connect the APP to a smartphone for local live video without Wi-Fi.

The item also supports motion detection alarm functionality, cycle recording and works when charging.

Usages: Nanny camera, Home/ Shop/ Office/ Warehouse

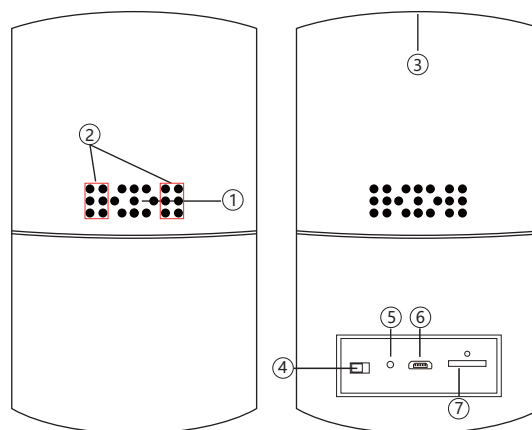
Warning : " illegal use is not allowed! Or, there will be consequences to bear! "

In the box

- 1x Wi-Fi camera
- 1x USB cable
- 1x AC power adapter
- 1x CD driver
- 1x User manual

3

Product structure



- ① Camera
- ② Invisible night vision led
- ③ Speaker
- ④ ON/OFF (For Wi-Fi Camera)
- ⑤ Reset
- ⑥ USB port
- ⑦ Micro SD card slot

4

Getting Started: Wifi Camera

Step1: Download and install APP

Scan below QR code or search and download the free APP "Pro iCam" in Apple APP store, Google play or Electronic market, and install it.



[Pro iCam] APP QR code



5

Step2: Connect power and turn on device


Turn on backside switch, and wait for 1 minute (Light on the back of the unit will blink red and blue slowly);

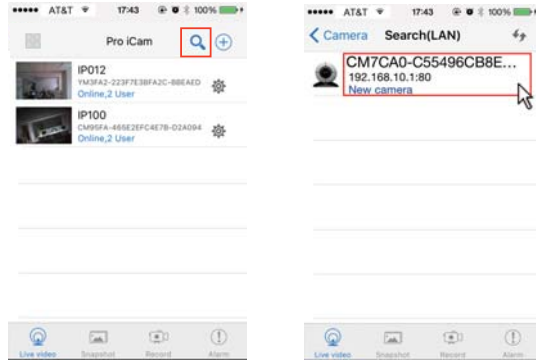
Step 3: Connect Wi-Fi

1. Open smartphone Wifi settings, search and connect Wi-Fi to the device's wireless signal named "CM#####", wait for wifi to be connected.



6


2. Enter APP, press top right “” icon → Select camera
 → Press Ok → camera will then be online;

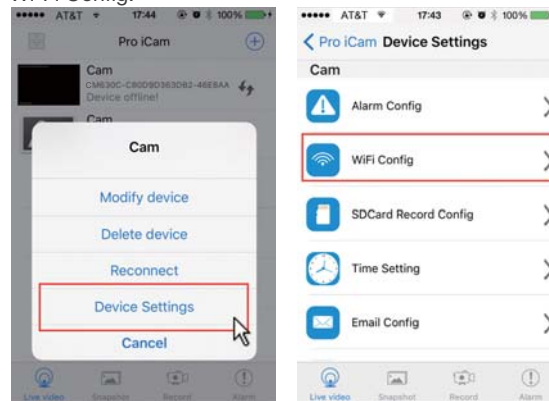


TIPS: 1. Select **【Change】** to change device password for security **【default: 8888】** ;

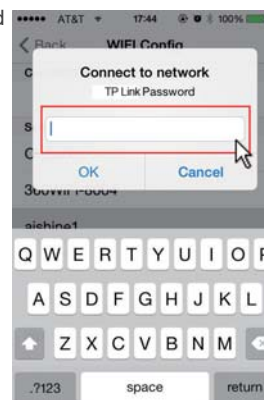
2. After this step, P2P mode is enabled and the user can check video locally when there is no Wifi.

7

3. Press the gear icon  after the camera or press and hold the desired camera and select Device Settings, select Wi-Fi Config.



4. Select the router Wi-Fi and input password, camera will be connected to the router Wi-Fi. The smartphone will disconnect the signal from device and connect to the router Wi-Fi.




5. Quit APP, and device will restart automatically and be ready again in 30 seconds.

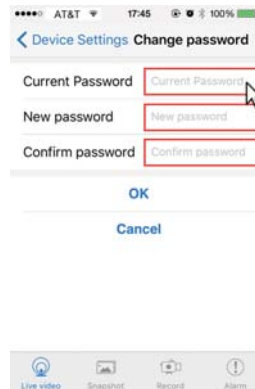
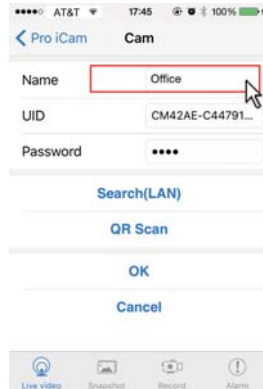
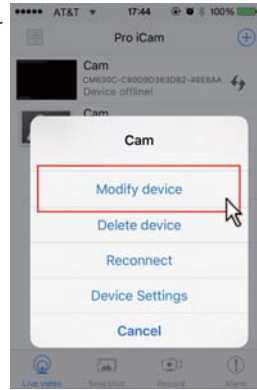
6. Enter the app and check live video locally or remotely anywhere. (The light on the back will be solid red and slowly blinking blue).

8

Set camera name and password

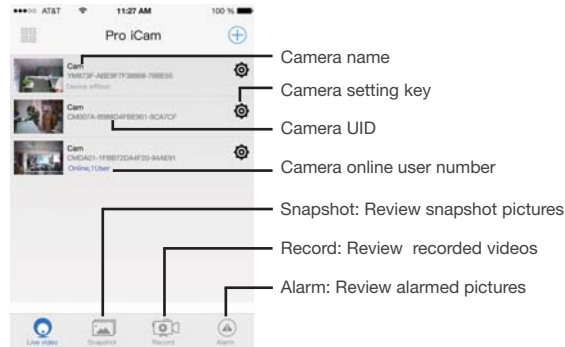
Set name: Press the  after the camera or Press and hold the camera, select Modify device, select Name and revise name like Office, Room.....

Set code: Press and hold the camera and select Device Settings, select Change password. Default password is 8888.

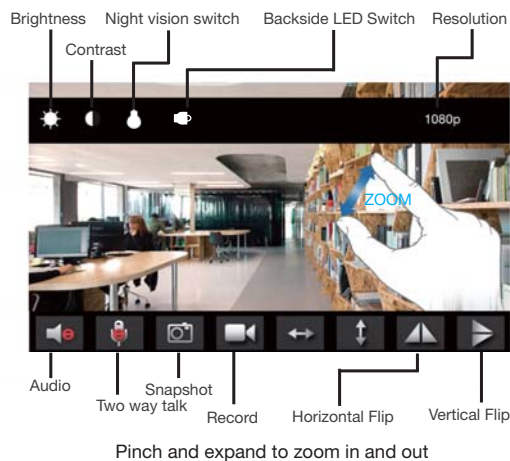


9

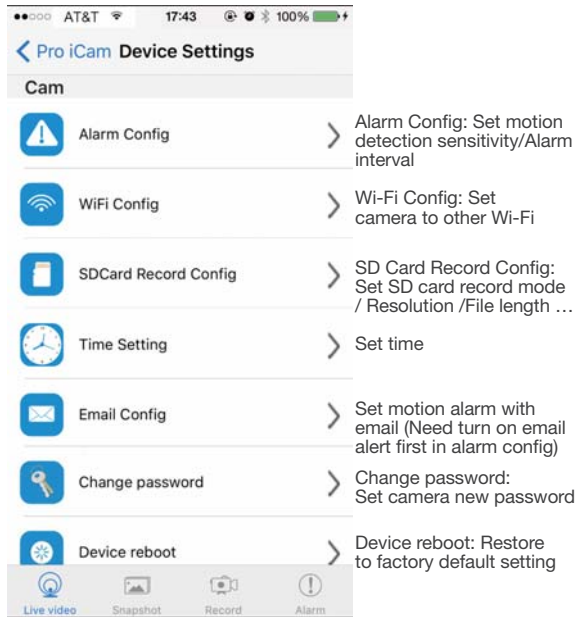
APP introduction



Live video page - Click camera to check



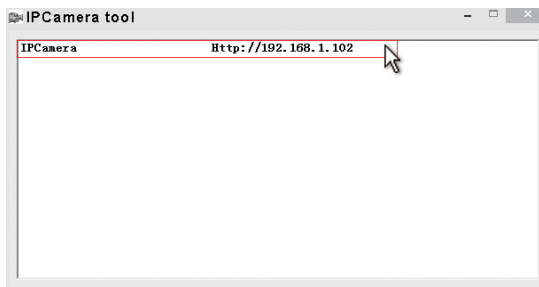
10



TIPS: After changing settings in Device Settings, please scroll down and press ok to save the setting.


Set and watch by PC in LAN

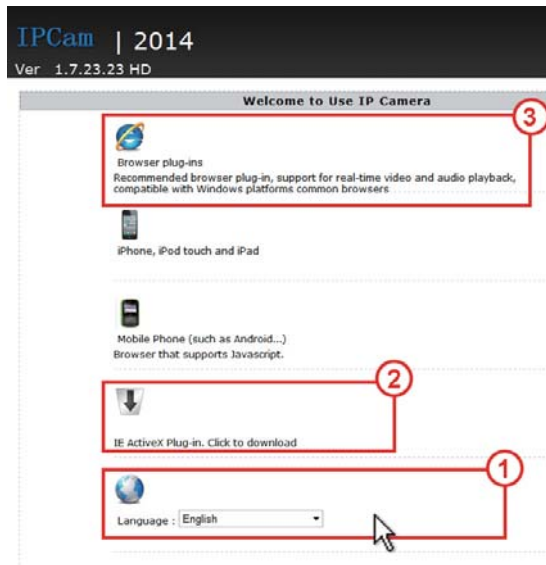
1. Once camera is connected with the Wi-Fi, install software "IPCamera" from included CD and open software to find the connected device's IP address.



2. Double click the IP address, insert name "admin" (no password) and press ok.



3. After above steps, you can insert setting interface. For first use, choose language, then click  to download and install plug-in.



13

4. Click  to go to the final setting interface.



5. Click left options to set other needed functions.



6. On the left side click System--> About (to check wifi camera's firmware version).

Set and watch by PC remotely (WAN)


Check details in included CD for instructions and software.


14

Specification

Item	Wireless Stereo speaker Wi-Fi Security Camera
Lens	2.0 Mega COMS
Resolution	1920*1080
Frames	Max 25fps
Compressed format	H.264
View Angel	Rotatable 330 degree
Night Vision	Invisible 3M
Type of Memory Card	TF>=Class 4/10 HC Marked
Capacity of Memory Card	Max 128GB
PC operation system	Windows 7,8/Mac OS X
Mobile Phone operation system	Android/iOS
Video Player	VLC Player/SM Player
Battery Capacity	No/Work with Adapter
Recording	1min/20mb
Working time	8-10 hours
Charging time	10-12 hours
Power adapter	5V/2A

FAQ

1. Q: Cannot get device Wi-Fi signal?
 A: 1). Low battery, charge the device.
 2). Press reset key for 5 seconds and wait 2 mins;
2. Q: Cannot add or set camera after connected with camera Wi-Fi?
 A: Check that the device is connected to the Wi-Fi.
3. Q: When live video is opened it is a black screen and nothing displays?
 A: If camera's connected Wi-Fi speed is slow, please wait 10-30 seconds for live video appear;
TIPS: If local Wi-Fi speed is slow, please choose lower resolution for better video and audio.
4. Q: Live video is not smooth and clear?
 A: Select suitable resolution according to the real time network environment.
5. Q: Only 1 user, but shows 2 or more users?
 A: 1). If logging in often, the previous session may still be registering as logged in;
 2). For security and safety, change camera's password when first use (Page 11).
6. Q: Motion detection setup and alarm?
 A: 1). Set motion detection sensitivity in Device Settings - Alarm Config, and scroll down press OK;
 2). When motion is detected, the camera will push an alarm message will be sent to your phone and take 3 pictures available in the APP [Page 11 - Alarm - ].
7. Q: Micro SD card instruction?
 A: 1). Format card before inserting;
 2). When the switch on the back of the device is on, every time you insert micro SD card, it will record automatically;
 3). Once connected, can set SD management in app [Advance Config - SD Card Record Config].

8. Q: How to play and remove the micro SD card video?
A: 1). Use a card reader to read and play;
2). Use APP to play back [Page 11 - Record - ];
3). Press and hold on recorded photos or videos, choose "Share" on other APP or SNS social media.
9. Q: After connecting to Wi-Fi, what is the status of camera when the Wi-Fi off?
A: 1). If the modem is off and the router is on, the camera can still check locally, if it is in local area network (LAN) ;
2). If the modem and the router are both off, the camera will keep searching for the connected Wi-Fi and connect again once on.
10. Q: Camera does not hold set Wi-Fi, lost contact or is offline?
A: 1). Make sure camera is inside the range of good Wi-Fi signal;
2). Low battery, check if power adapter is connected properly for long term use.
3). Make sure your phone network(4G/Wi-Fi) works well in remote area when checking the camera;
11. Q: How does the indicator light work?
A: Red light indicates charging, blue light indicates Wi-Fi working status.
12. Q: The indicator light on the back is not hidden?
A: Refer to Page 12, to turn on/off the light per preferences on APP.
13. Q: Forget camera password, or item goes abnormal?
A: Turn on the camera and wait for 2 minutes,

17

key 5 seconds until the indicators on the back turn off to restore factory default. Camera will restart and be ready again in 2 minutes.

14. Q: App content similar but not exactly same as in manual?
A: App is always being optimized with improvements to the interface and functions.



[[Download CD Driver](#)]

FCC Warning

This device complies with Part 15 of the FCC Rules.
Operation is subject to the following two conditions:

(1) This device may not cause harmful interference, and (2)
This device must accept any interference received, including
interference that may cause undesired operation.

NOTE 1: This equipment has been tested and found to comply with the limits for a Class B digital device, pursuant to part 15 of the FCC Rules. These limits are designed to provide reasonable protection against harmful interference in a residential installation. This equipment generates, uses and can radiate radio frequency energy and, if not installed and used in accordance with the instructions, may cause harmful interference to radio communications. However, there is no guarantee that interference will not occur in a particular installation. If this equipment does cause harmful interference to radio or television reception, which can be determined by turning the equipment off and on, the user is encouraged to try to correct the interference by one or more of the following measures:

- Reorient or relocate the receiving antenna.
- Increase the separation between the equipment and receiver.
- Connect the equipment into an outlet on a circuit different from that to which the receiver is connected.
- Consult the dealer or an experienced radio/TV technician for help.

NOTE 2: Any changes or modifications to this unit not expressly approved by the party responsible for compliance could void the user's authority to operate the equipment.