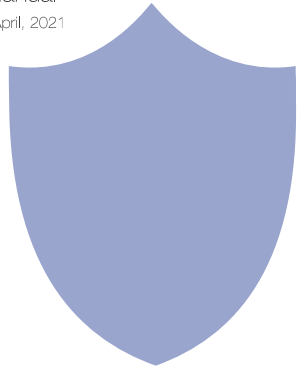



HD 1080P Wireless Security Wi-Fi Camera

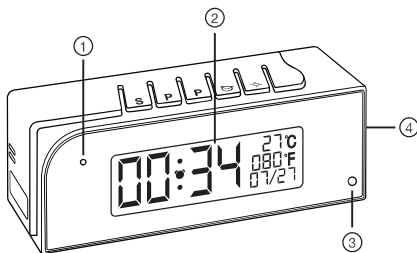
User Manual

Version: :April, 2021



5. Press  icon on the right corner of camera --> WiFi Config --> Select local Wi-Fi (SSID) --> Input password --> Tap Next;
 6. Quit APP , wait 30 seconds (device restart automatically) and connected with set Wi-Fi(Wi-Fi indicator is solid);
 7. Enter APP to check live video locally or remotely anywhere.
- P.S.: Contact local dealer for tutorial video setting up.

Product structure of Tiny Clock②:



- ① Camera
- ② Display
- ③ Invisible night vision leds (Turn ON/OFF Automatically)
- ④ Device UID & QR code



Size: 109x39x46mm



Tiny Clock ①

Overview:

These two fashion designed tiny clock, local temperature and humidity info which auto-sync from internet once connected with Wi-Fi; The most important, it is integrated with a powerful 1080p smart invisible Wi-Fi camera comes with 6 meters powerful night vision.

First, it can be used for watching live streaming video day and night , or taking photo and video by APP in smart-phone remotely after Wi-Fi connected; Also, it supports Point to Point (P2P) function, easily connected for local live video without Wi-Fi.

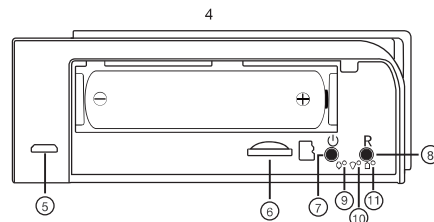
Second, it also support motion detect alarm function, cycle recording and work when charging.

Usages: Nanny camera, Home/ Shop/ Office/ Warehouse surveillance camera.....

Warning : " illegal use is not allowed! Or, there will be consequences to bear! "



In the box:

- 1 x Camera Unit
- 1 x 5V2A power adapter
- 1 x Micro SD Card Reader
- 1 x USB Cable
- 1 x User Manual



- ⑤ USB port
- ⑥ Micro SD card slot
- ⑦ ON/OFF Key
- ⑧ Reset Key
- ⑨ Power indicator
- ⑩ Wi-Fi indicator
- ⑪ Charging indicator

Clock part of Tiny Clock②:

- S Time/Alarm set
- P₁ Hour/Month set / 12 vs 24Hour
- P₂ Minute/Day set / 12 vs 24Hour
-  Alarm on/off
-  Turn off/on display

Tips: Local Time and Temperature info will be updated automatically every 2 hours after connecting to local Wi-Fi.

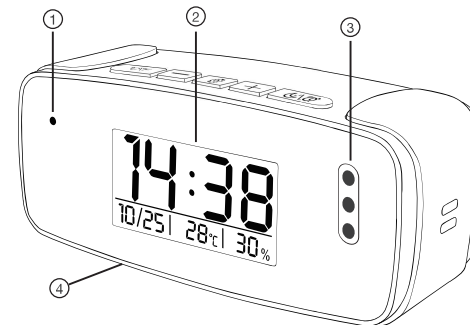


Size: 112x40x43mm



Tiny Clock ②

Product structure of Tiny Clock ①:



- ① Camera
- ② Display
- ③ Invisible night vision leds (Turn ON/OFF Automatically)
- ④ Device UID & QR code

Wi-Fi Camera Connection Setting

Step1: Download and install APP

Scan below QR code or search and download free APP named <TinyCam Pro> in Apple APP store, Google play or Electronic market, and install it;

Tips: Please allow "TinyCam Pro" to access your location while you are using the app(for syncing local weather info).




Quick guide of Wi-Fi camera function:

1.Download Free App <TinyCam Pro> from App Store or Google Play.

Tips: Please allow "TinyCam Pro" to access smartphone location while using the APP.

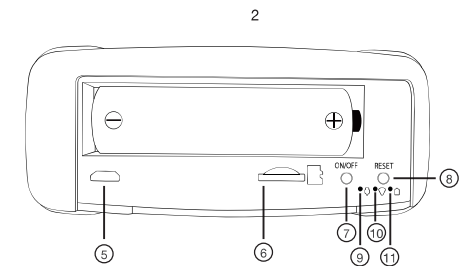
2.Take off back cover and pull out the battery insulator --> Insert micro SD card --> Press the ON/OFF key , wait for 1 minute (Power indicator and Wi-Fi indicator is flashing regularly.);

Tips: After above operation, please put on back cover and plug power adapter for long time use.

3.Enter smartphone settings --> Search and connect device's Wi-Fi named: AIS.....wait till phone status bar appear Wi-Fi symbol  ;

4. Enter APP, tap below  icon --> LAN search --> Tap the found device --> Tap Add --> Camera Online then;

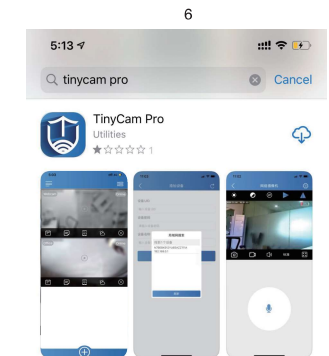
Tips: This step = P2P mode, can check video locally when without Wi-Fi.



- ⑤ USB port
- ⑥ Micro SD card slot
- ⑦ ON/OFF Key
- ⑧ Reset Key
- ⑨ Power indicator
- ⑩ Wi-Fi indicator
- ⑪ Charging indicator

Clock part of Tiny Clock ①:

- °C/°F Short press = Centigrade degree to Fahrenheit
- + Long press = Turn off / on display
- ⚙ 12h / 24h
- ⌚ Time set
- ⌚ Short press = Snooze
- ⌚ Long press = Turn off clock setting

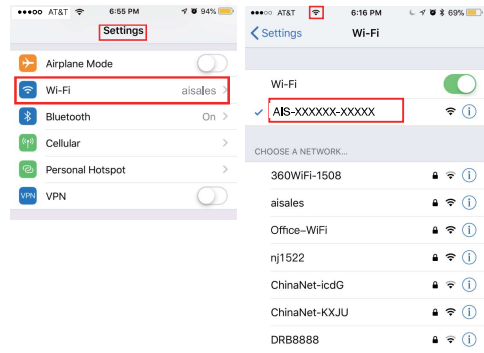


Step 2: Take off back cover and pull out the battery insulator --> Insert micro SD card --> Press the ON/OFF key , wait for 1 minute (Power indicator and Wi-Fi indicator is flashing regularly.);

Tips: After above operation, please put on back cover and plug power adapter for long time use.

Step 3: Connect Wi-Fi

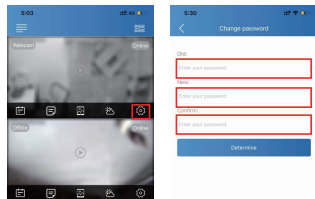
1. Open smartphone settings, search and connect the device's wireless signal named "AIS.....", wait Wi-Fi connected, and phone status bar appear Wi-Fi symbol.



11

Set camera name and private code

Set name: Tap the gear icon after the camera, Input a new name (like Office ...) in Device Name;
Set new password: Tap the gear icon after the camera, Tap Device Password --> Old password = 123456.



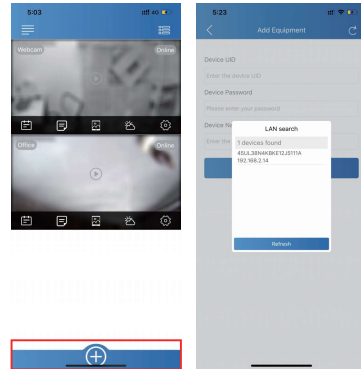
15

Specification

Resolution	1 Mega CMOS
Video pixel in phone	Max 1920*1080
Video pixel in card	1080*720
Frames	Max 25fps
Compressed format	H.264
View angle	120 Degree
Type of memory card	TF card>=Class 4/10 and HC marked
Maximum capacity of memory card	128GB
PC operation system	Windows 7, 8 / Mac OS X
Play software	VLCPlayer/SMPlayer
Mobile phone operation system	Android/iOS
Web browser	IE7 and above, chrome, firefox
Power consumption	300MA/3.7V
Battery Capacity	Rechargeable 3000 mA
Recording	1 minute/ around 20MB
Working time in day time	Around 8 hours
Working time in night time	Around 3 hours
Charging time	3-4 hours
Power adapter	5V / 2A

19

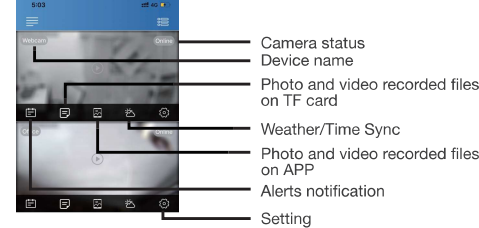
2. Enter APP, tap below “+” icon --> LAN search --> Tap the found device --> Tap Add --> Camera Online then;



Tips: This step = P2P mode, can check video locally when without Wi-Fi.

12

APP introduction:



Tips: 1. Please confirm phone setting has allowed TinyCam Pro App to access the location services;
2. A TF card (Micro SD card) must be inserted for saving alerts pictures.

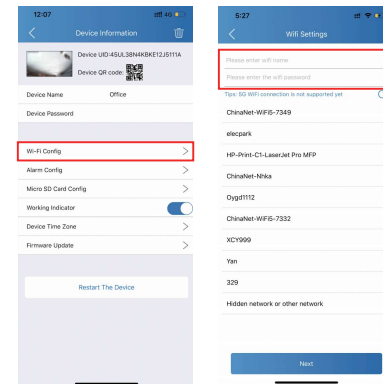
16

FAQ

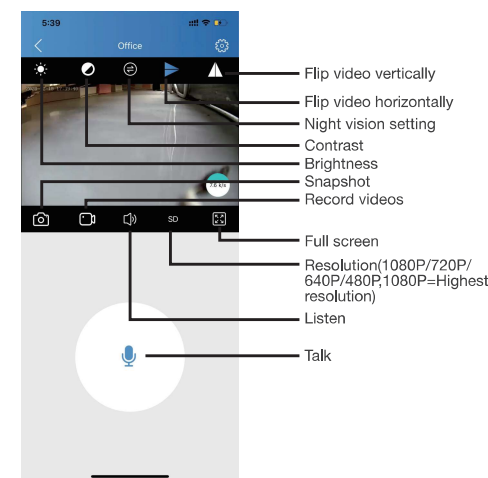
- Q: Time display is not stable, always blinking?
A: It's with low battery, please charge it.
- Q: Can't get device Wi-Fi signal?
A: Press reset key for 10 seconds and wait 1 minute.
- Q: Live video not smooth and clear?
A: Select suitable resolution according to the real time network environment.
- Q: Motion detect set and alarm?
A: 1). Set motion detect sensitivity in App Setting > Alarm Config;
2). When motion detected, camera will push a alarm message to your phone and take one picture for checking in the APP [Page 16 - Alert notification]. (A micro sd card MUST be inserted for saving alarm pictures)

20

3. Tap gear icon on the right corner of camera --> Wi-Fi Config --> Select local Wi-Fi (SSID) --> Input password --> Tap Next;



13

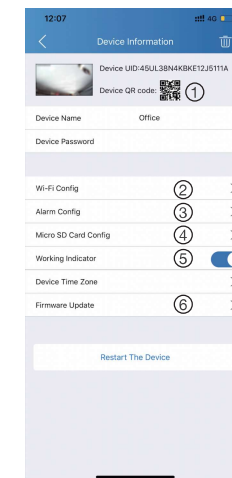


17

4. Quit APP , wait 30 seconds (device restart automatically) and connected with set Wi-Fi (Wi-Fi indicator is solid) ;
5. Enter APP and check live video locally or remotely anywhere.

This device complies with part 15 of the FCC Rules. Operation is subject to the following two conditions: (1) This device may not cause harmful interference, and
(2) This device must accept any interference received, including interference that may cause undesired operation.
Changes or modifications not expressly approved by the party responsible for compliance could void the user's authority to operate the equipment. This equipment has been tested and found to comply with the limits for a Class B digital device, pursuant to Part 15 of the FCC Rules. These limits are designed to provide reasonable protection against harmful interference in a residential installation. This equipment generates uses and can radiate radio frequency energy and, if not installed and used in accordance with the instructions, may cause harmful interference to radio communications. However, there is no guarantee that interference will not occur in a particular installation. If this equipment does cause harmful interference to radio or television reception, which can be determined by turning the equipment off and on, the user is encouraged to try to correct the interference by one or more of the following measures:
-- Reorient or relocate the receiving antenna.
-- Increase the separation between the equipment and receiver.
-- Connect the equipment into an outlet on a circuit different from that to which the receiver is connected.
-- Consult the dealer or an experienced radio/TV technician for help.
This equipment complies with the FCC RF radiation exposure limits set forth for an uncontrolled environment. This equipment should be installed and operated with a minimum distance of 20cm between the radiator and any part of your body.

14



18

- 1 Share camera with others by QR code
- 2 Wi-Fi Config: Set camera to connect to local Wi-Fi
- 3 Alarm Config: Set motion detection sensitivity
- 4 Micro SD Card Record Config: Set SD card record mode / Resolution / File length...
- 5 Working Indicator: To turn on/off device's working led
- 6 Firmware Update: Update device's latest firmware by app



The end!

21