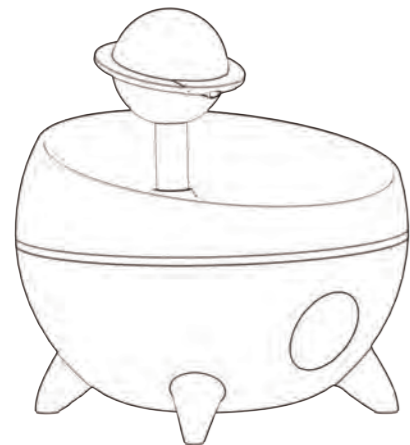


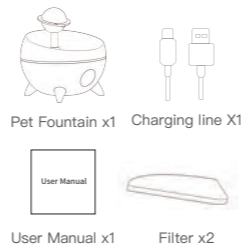
# USER MANUAL

Please read the user manual carefully before using the product



Checking the product is intact or not when you received it.

Please check with the list to confirm that accessories are complete.



## Functional specifications

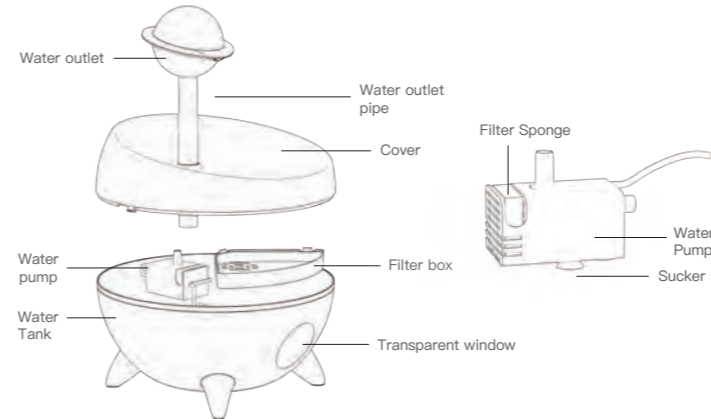
### Product Parameters

WiFi: 2.4G Wifi	Power supply: 5V/1A
Maximum Capacity: 2.1L	Weight: 1kg
Material: ABS+PC	Size: 239.8x239.8x246.2 mm
Assembly: Upper and lower cover rotation buckle	

### Indicator Light

Power on: Blue light	A lack of water: The red light is flashing
Networking success: Green light	Light Mode: RGB colors alternative
Connecting the internet: The green light is flashing	

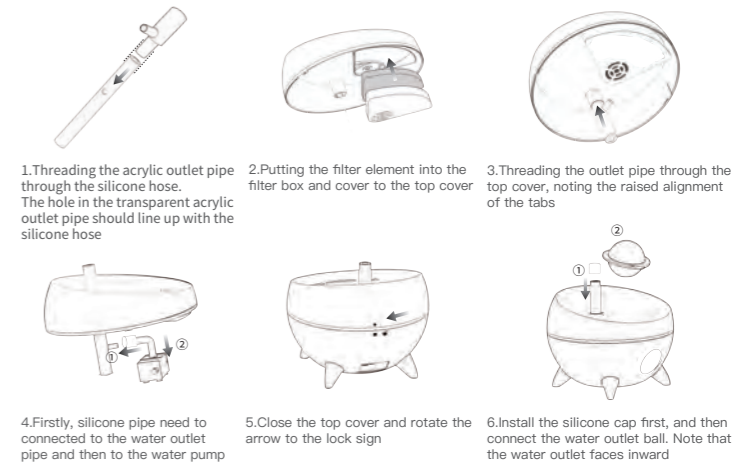
## Product Diagram



## Tips

1. It is recommended to replace the filter every 15 days.
2. It is recommended to replace the water pump filter sponge every 15 days.
3. It is recommended to clean the water tank every 7 days.
4. When cleaning the water tank, do not soak in water.

## Pet Fountain Assembly



## Installation Video

Scan the QR code on the left to watch product assembly and product showcase videos

# APP operation instruction

Pet water fountain



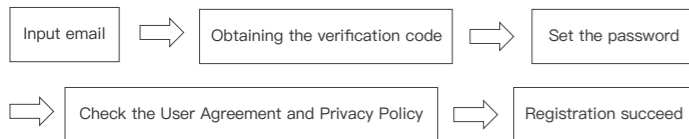
Install APP

1.Scanning the above QR-code to download the latest vision app.

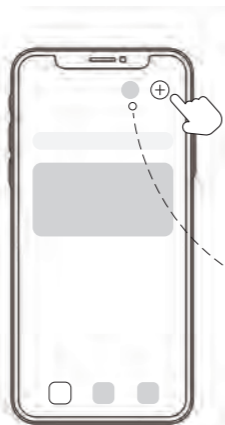
2.IOS system can download the app through the App store by searching "Pet Fountain" .

3.Android system can download the app through Google Play by searching "Pet Fountain" .

## ① Sign in



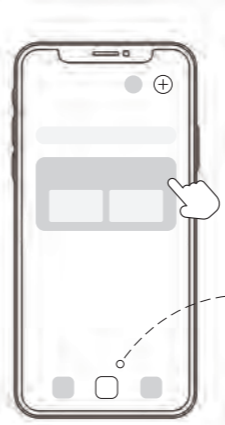
## ② Add Device



**Add device**  
Three methods to add device:  
① Scanning the QR-code on the device.  
② Enter the device number to add a device.  
③ Through searching nearby device to add the device.

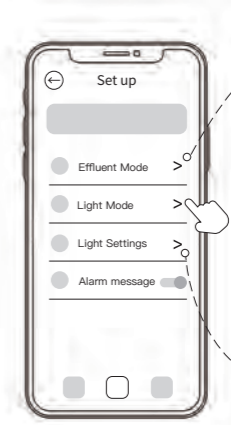
Alarm notification

## ③ Set up



Click the device list to see more details of the data.

Enter the setting page



Two effluent modes:  
① Induced effluent  
② Continuous effluent

Three light modes:  
① Monochromatic mode  
② Breathing mode  
③ Gradient mode

Light color: All RGB colors alternative

## FCC Warning Statement

Changes or modifications not expressly approved by the party responsible for compliance could void the user's authority to operate the equipment. This equipment has been tested and found to comply with the limits for a Class B digital device, pursuant to Part 15 of the FCC Rules. These limits are designed to provide reasonable protection against harmful interference in a residential installation. This equipment generates uses and can radiate radio frequency energy and, if not installed and used in accordance with the instructions, may cause harmful interference to radio communications.

However, there is no guarantee that interference will not occur in a particular installation. If this equipment does cause harmful interference to radio or television reception, which can be determined by turning the equipment off and on, the user is encouraged to try to correct the interference by one or more of the following measures:

- - Reorient or relocate the receiving antenna.
- - Increase the separation between the equipment and receiver.
- - Connect the equipment into an outlet on a circuit different from that to which the receiver is connected.
- - Consult the dealer or an experienced radio/TV technician for help.

## FCC Radiation Exposure Statement

The antennas used for this transmitter must be installed to provide a separation distance of at least 20 cm from all persons and must not be co - located for operating in conjunction with any other antenna or transmitter.

This device complies with Part 15 of the FCC Rules.

Operation is subject to the following two conditions:

- (1) This device may not cause harmful interference, and
- (2) This device must accept any interference received, including interference that may cause undesired operation.