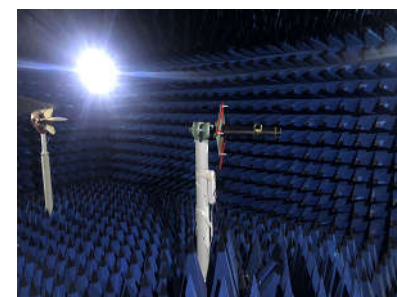


# Test Report for headset Antenna

RF: Ke Hong Chen

Date: 2022-12-15

Ccontact: 19925137130



1

Brief for test

2

Version outline for the Report

4

Data for the positive Antenna

5

Test environment



Brief for test

<b>Model</b>	Headset			
<b>PCB</b>	Main Board			
<b>Frequency Band and Material type</b>	<b>Main Antenna</b>	<b>Frequency Band</b>		<b>Material Type</b>
		Bluetooth	OTA	
<b>Test requirements</b>	By customer requirements			

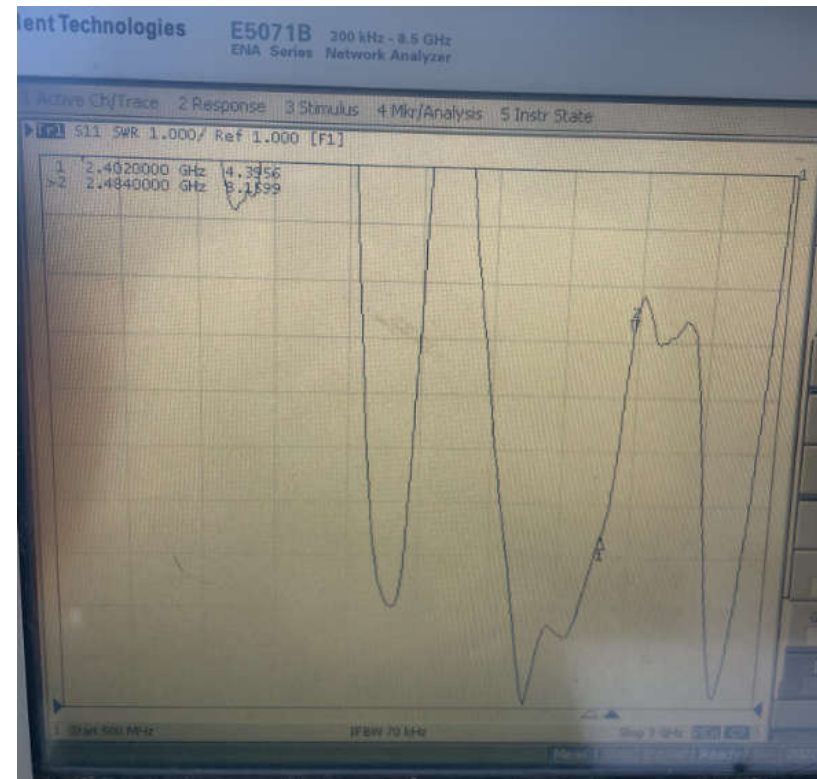
## Antenna Positive Data

Channel No.	Free space test data	
	TRP (dBm)	TIS (dBm)
0	5.23	-90.99
39	4.44	-90.37
78	4.43	-90.20

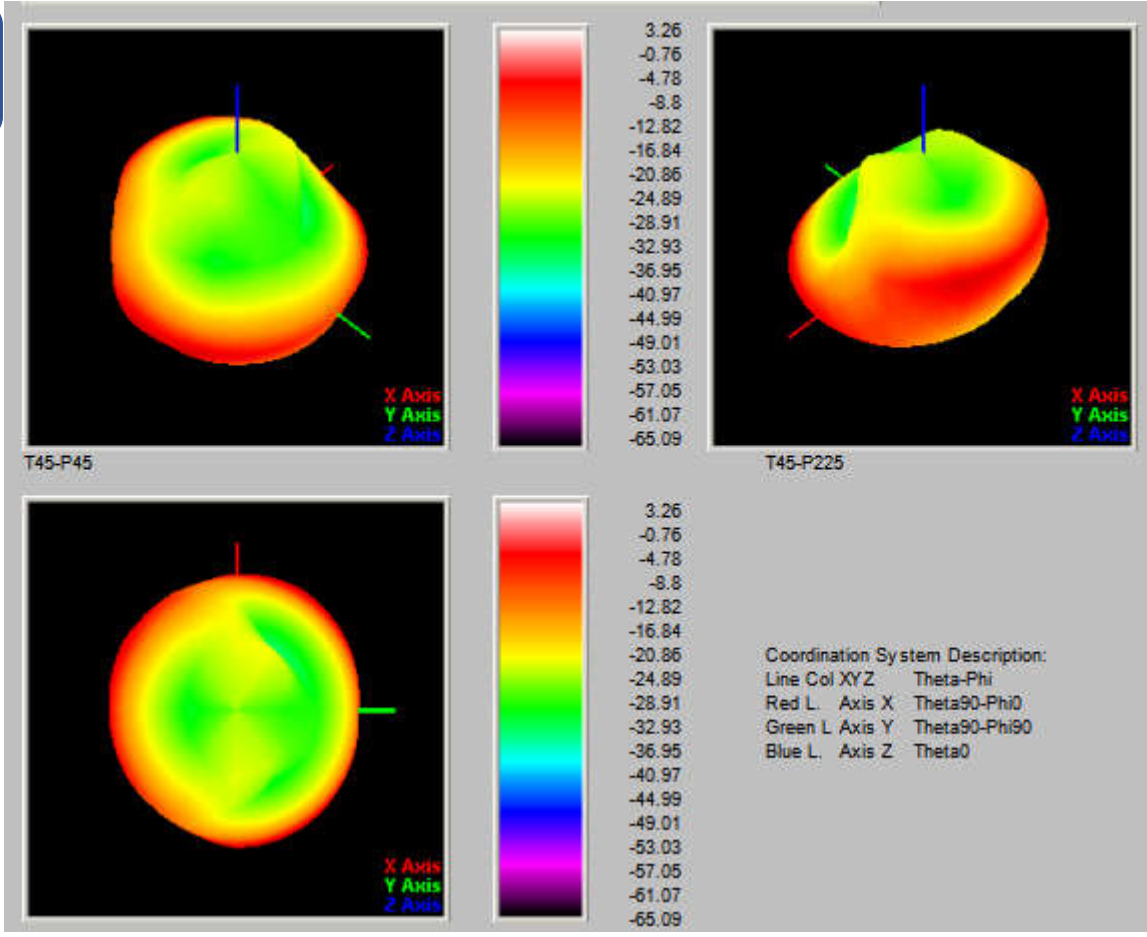
Channel No.	Head/ear test data	
	TRP (dBm)	TIS (dBm)
0	4.19	-89.14
39	3.67	-88.70
78	3.85	-88.74

## Antenna Passive Data

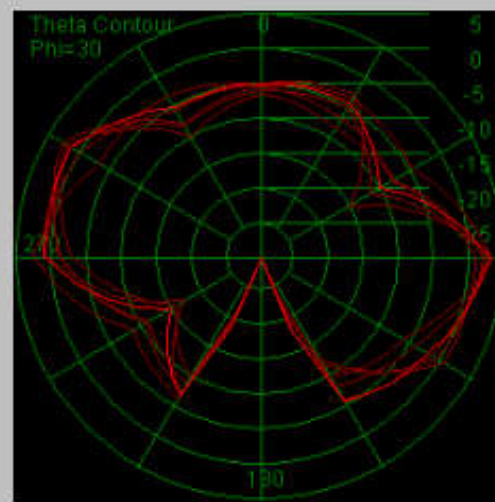
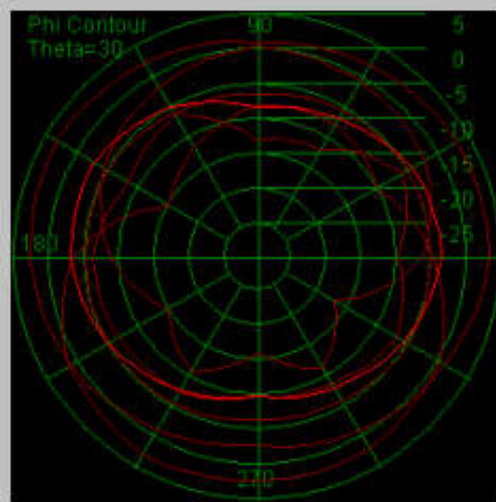
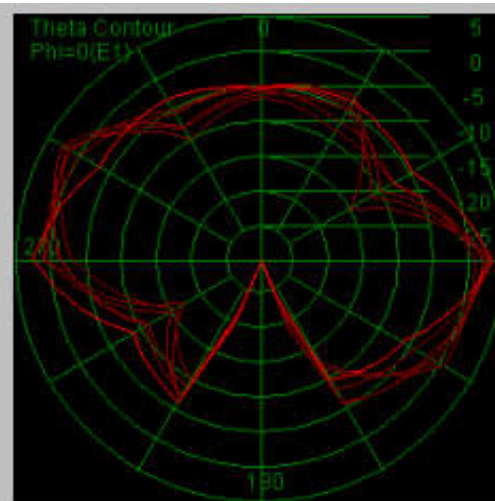
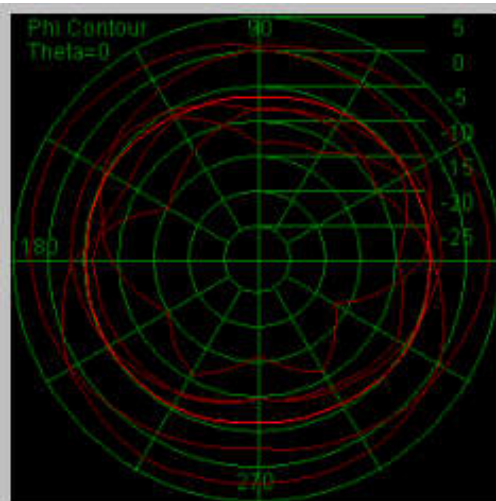
Freq(2.4G)	Effi (%)	gain (dbi)
2400MHZ	44.4	-1.8
2410MHZ	44.7	-1.6
2420MHZ	45.3	-1.7
2430MHZ	46.8	-1.6
2440MHZ	46.2	-1.5
2450MHZ	44.1	-1.6
2460MHZ	40.6	-1.5
2470MHZ	36.0	-1.7
2480MHZ	38.2	-1.8
2490MHZ	39.9	-2.0
2500MHZ	37.8	-1.9



Antenna Apple Graph



Petal diagram  
(2450Mhz)



Test Setup





**CMW500**



**E5071B**

