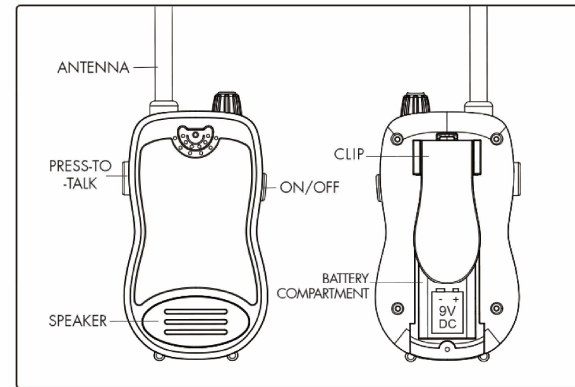


Battery Installation:

- 1) Make sure Walkie Talkie is in the power OFF position.
- 2) Push and slide down to remove clip. (Pic. 1 - ① ②)
- 3) Use a screwdriver to remove the screw. (Pic. 1 - ③)
- 4) Push and slide down the battery compartment cover. (Pic. 2 - ④)
- 5) Insert a 9V battery (not included) according to the "+" and "-" polarity. (Pic. 2 - ⑤)
- 6) Slide the battery compartment cover back in. (Pic. 3 - ⑥)
- 7) Put the screw to secure the battery compartment cover. (Pic. 3 - ⑦)
- 8) Slide the clip back in. (Pic. 3 - ⑧)

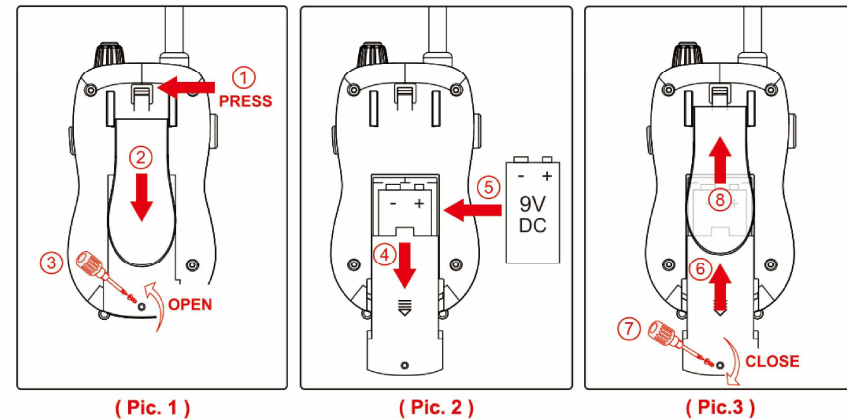


Operation Guide:

- 1) Make sure Walkie Talkie is in the power ON position.
- 2) Push the side button to talk and release it to listen.
- 3) Suggest to hold the Walkie Talkie few inches away for better experience.

Warning:

- Keep batteries away from Children.
- Batteries should only be inserted or changed by adult.
- Remove batteries from product before extended storage.
- Do not mix old and new batteries.
- Do not mix alkaline, standard (carbon-zinc), or rechargeable (nickel-cadmium) batteries.



Note:

This equipment has been tested and found to comply with the limits for a Class B digital device, pursuant to Part 15 of the FCC Rules. These limits are designed to provide reasonable protection against harmful interference in a residential installation. This equipment generates, uses and can radiate radio frequency energy and, if not installed and used in accordance with the instructions, may cause harmful interference to radio communications. However, there is no guarantee that interference will not occur in a particular installation. If this equipment does cause harmful interference to radio or television reception, which can be determined by turning the equipment off and on, the user is encouraged to try to correct the interference by one or more of the following measures:

- Reorient or relocate the receiving antenna.
- Increase the separation between the equipment and receiver.
- Connect the equipment into an outlet on a circuit different from that to which the receiver is connected.
- Consult the dealer or an experienced radio/TV technician for help.

Warning:

Changes or modifications to this unit not expressly approved by the party for compliance could void the user's authority to operate the equipment.

Customer Service USA:
1 844 8099030