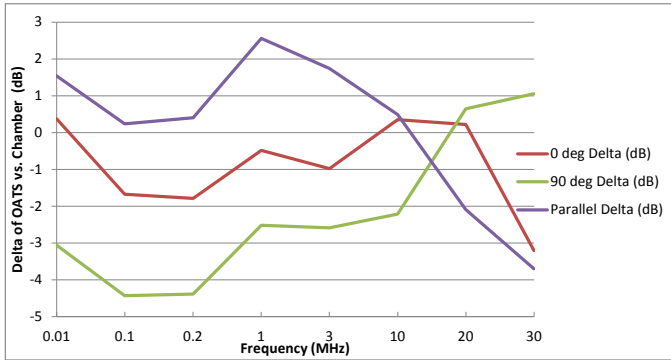


Frequency (MHz)	Open Area 0 Deg (dB)	Chamber 0 Deg (dBuA/m)	0 deg Delta (dB)		Open Area 90 Deg (dBuA/m)	Chamber 90 Deg (dBuA/m)	90 deg Delta (dB)		Open Area Parallel (dBuA/m)	Chamber Parallel (dBuA/m)	Parallel Delta (dB)
0.01	34.894	34.521	0.373		28.699	31.756	-3.057		29.405	27.867	1.538
0.1	20.172	21.85	-1.678		14.405	18.83	-4.425		14.939	14.699	0.24
0.2	15.14	16.928	-1.788		9.559	13.945	-4.386		10.206	9.805	0.401
1	12.11	12.59	-0.48		7.332	9.846	-2.514		7.954	5.397	2.557
3	0.347	1.326	-0.979		-3.953	-1.368	-2.585		-3.947	-5.685	1.738
10	-3.058	-3.405	0.347		-9.082	-6.871	-2.211		-10.694	-11.182	0.488
20	-4.334	-4.55	0.216		-7.816	-8.46	0.644		-17.199	-15.111	-2.088
30	-5.677	-2.478	-3.199		-3.636	-4.693	1.057		-10.539	-6.843	-3.696



Note - Worst-case delta is 1.05dB at 30MHz if only considering 0/90 measurements. Please ensure all test emissions below 30 MHz has greater than 3x dB margin of the specified frequency or 3.25 dB (worst-case).

Note - Worst-case delta is 2.56 dB at 1MHz when considering all antenna orientation arrangements (0/90/Parallel). Please ensure all test emissions below 30 MHz has greater than 3x dB margin of the specified frequency or 7.75 dB (worst-case) if using 0/90 and Parallel.

Frequency (MHz)	Generator Tx Level (dBm)	Level at Tx Ant (dBm)	Receive Cable Path Loss (dB)	Tx H Ant Factor	Rx H Ant Factor	Measured Field (dBuV)	Corrected Level (dBuA/m)
0.01	-10	-9.99	0.08	9	24.7	10.114	34.894
0.1	-10	-10.13	0.26	4.1	5.9	14.012	20.172
0.2	-10	-10.06	0.23	4.7	0.9	14.01	15.14
1.001	-10	-10.18	0.55	-4.7	-10.2	21.76	12.11
3	-20	-20.2	0.93	-13	-13.6	13.017	0.347
10.001	-20	-20.11	1.56	-16.6	-14.3	9.682	-3.058
20	-20	-20.21	2.3	-17.4	-14.2	7.566	-4.334
30	-20	-20.3	2.96	-18.2	-14.5	5.863	-5.677
Tx Cable	ATA172	MIL-C-17	33 feet				
Rx Cable		RG-223					
Tx Ant <1MHz	AT0037						
Tx Ant <=1MHz	AT0036						
Rx Ant	AT0008						
Analyzer Settings							
RBW	30Hz						
VBW	10Hz						
Attn	10dB						
Coupling	DC						
Detector	Peak						

Frequency (MHz)	Generator Tx Level (dBm)	Level at Tx Ant (dBm)	Receive Cable Path Loss (dB)	Tx H Ant Factor	Rx H Ant Factor	Measured Field (dBuV)	Corrected Level (dBA/m)
0.01	-10	-9.99	0.08	9	24.7	3.919	28.699
0.1	-10	-10.13	0.26	4.1	5.9	8.245	14.405
0.2	-10	-10.06	0.23	4.7	0.9	8.429	9.559
1.001	-10	-10.18	0.55	-4.7	-10.2	16.982	7.332
3	-20	-20.2	0.93	-13	-13.6	8.717	-3.953
10.001	-20	-20.11	1.56	-16.6	-14.3	3.658	-9.082
20	-20	-20.21	2.3	-17.4	-14.2	4.084	-7.816
30	-20	-20.3	2.96	-18.2	-14.5	7.904	-3.636
Tx Cable	ATA172	MIL-C-17	33 feet				
Rx Cable		RG-223					
Tx Ant <1MHz	AT0037						
Tx Ant <=1MHz	AT0036						
Rx Ant	AT0008						
Analyzer Settings							
RBW	30Hz						
VBW	10Hz						
Attn	10dB						
Coupling	DC						
Detector	Peak						

Frequency (MHz)	Generator Tx Level (dBm)	Level at Tx Ant (dBm)	Receive Cable Path Loss (dB)	Tx H Ant Factor	Rx H Ant Factor	Measured Field (dBuV)	Corrected Level (dBA/m)	Notes
0.01	-10	-9.99	0.08	9	24.7	4.625	29.405	
0.1	-10	-10.13	0.26	4.1	5.9	8.779	14.939	
0.2	-10	-10.06	0.23	4.7	0.9	9.076	10.206	
1.001	-10	-10.18	0.55	-4.7	-10.2	17.604	7.954	
3	-20	-20.2	0.93	-13	-13.6	8.723	-3.947	
10.001	-20	-20.11	1.56	-16.6	-14.3	2.046	-10.694	
20	-20	-20.21	2.3	-17.4	-14.2	-5.299	-17.199	Noise Floor at -20dBuV
30	-10	-10.3	2.96	-18.2	-14.5	1.001	-10.539	
Tx Cable	ATA172	MIL-C-17	33 feet					
Rx Cable		RG-223						
Tx Ant <1MHz	AT0037							
Tx Ant <=1MHz	AT0036							
Rx Ant	AT0008							
Analyzer Settings								
RBW	30Hz							
VBW	10Hz							
Attn	10dB							
Coupling	DC							
Detector	Peak							

Frequency (MHz)	Generator Tx Level (dBm)	Level at Tx Ant (dBm)	Receive Cable Path Loss (dB)	Tx H Ant Factor	Rx H Ant Factor	Measured Field (dBuV)	Corrected Level (dBA/m)
0.01	-10	-9.99	0.08	9	24.7	9.741	34.521
0.1	-10	-10.13	0.26	4.1	5.9	15.69	21.85
0.2	-10	-10.06	0.23	4.7	0.9	15.798	16.928
1.001	-10	-10.18	0.55	-4.7	-10.2	22.24	12.59
3	-20	-20.2	0.93	-13	-13.6	13.996	1.326
10.001	-20	-20.11	1.56	-16.6	-14.3	9.335	-3.405
20	-20	-20.21	2.3	-17.4	-14.2	7.35	-4.55
30	-20	-20.3	2.96	-18.2	-14.5	9.062	-2.478
Tx Cable	ATA172	MIL-C-17	33 feet				
Rx Cable		RG-223					
Tx Ant <1MHz	AT0037						
Tx Ant <=1MHz	AT0036						
Rx Ant	AT0008						
Analyzer Settings							
RBW	30Hz						
VBW	10Hz						
Attn	10dB						
Coupling	DC						
Detector	Peak						

Frequency (MHz)	Generator Tx Level (dBm)	Level at Tx Ant (dBm)	Receive Cable Path Loss (dB)	Tx H Ant Factor	Rx H Ant Factor	Measured Field (dBuV)	Corrected Level (dBA/m)
0.01	-10	-9.99	0.08	9	24.7	6.976	31.756
0.1	-10	-10.13	0.26	4.1	5.9	12.67	18.83
0.2	-10	-10.06	0.23	4.7	0.9	12.815	13.945
1.001	-10	-10.18	0.55	-4.7	-10.2	19.496	9.846
3	-20	-20.2	0.93	-13	-13.6	11.302	-1.368
10.001	-20	-20.11	1.56	-16.6	-14.3	5.869	-6.871
20	-20	-20.21	2.3	-17.4	-14.2	3.44	-8.46
30	-20	-20.3	2.96	-18.2	-14.5	6.847	-4.693
Tx Cable	ATA172	MIL-C-17	33 feet				
Rx Cable		RG-223					
Tx Ant <1MHz	AT0037						
Tx Ant <=1MHz	AT0036						
Rx Ant	AT0008						
Analyzer Settings							
RBW	30Hz						
VBW	10Hz						
Attn	10dB						
Coupling	DC						
Detector	Peak						

Frequency (MHz)	Generator Tx Level (dBm)	Level at Tx Ant (dBm)	Receive Cable Path Loss (dB)	Tx H Ant Factor	Rx H Ant Factor	Measured Field (dBuV)	Corrected Level (dBA/m)
0.01	-10	-9.99	0.08	9	24.7	3.087	27.867
0.1	-10	-10.13	0.26	4.1	5.9	8.539	14.699
0.2	-10	-10.06	0.23	4.7	0.9	8.675	9.805
1.001	-10	-10.18	0.55	-4.7	-10.2	15.047	5.397
3	-20	-20.2	0.93	-13	-13.6	6.985	-5.685
10.001	-20	-20.11	1.56	-16.6	-14.3	1.558	-11.182
20	-20	-20.21	2.3	-17.4	-14.2	-3.211	-15.111
30	-10	-10.3	2.96	-18.2	-14.5	4.697	-6.843
Tx Cable	ATA172	MIL-C-17	33 feet				
Rx Cable		RG-223					
Tx Ant <1MHz	AT0037						
Tx Ant <=1MHz	AT0036						
Rx Ant	AT0008						
Analyzer Settings							
RBW	30Hz						
VBW	10Hz						
Attn	10dB						
Coupling	DC						
Detector	Peak						