

APDM Inc.

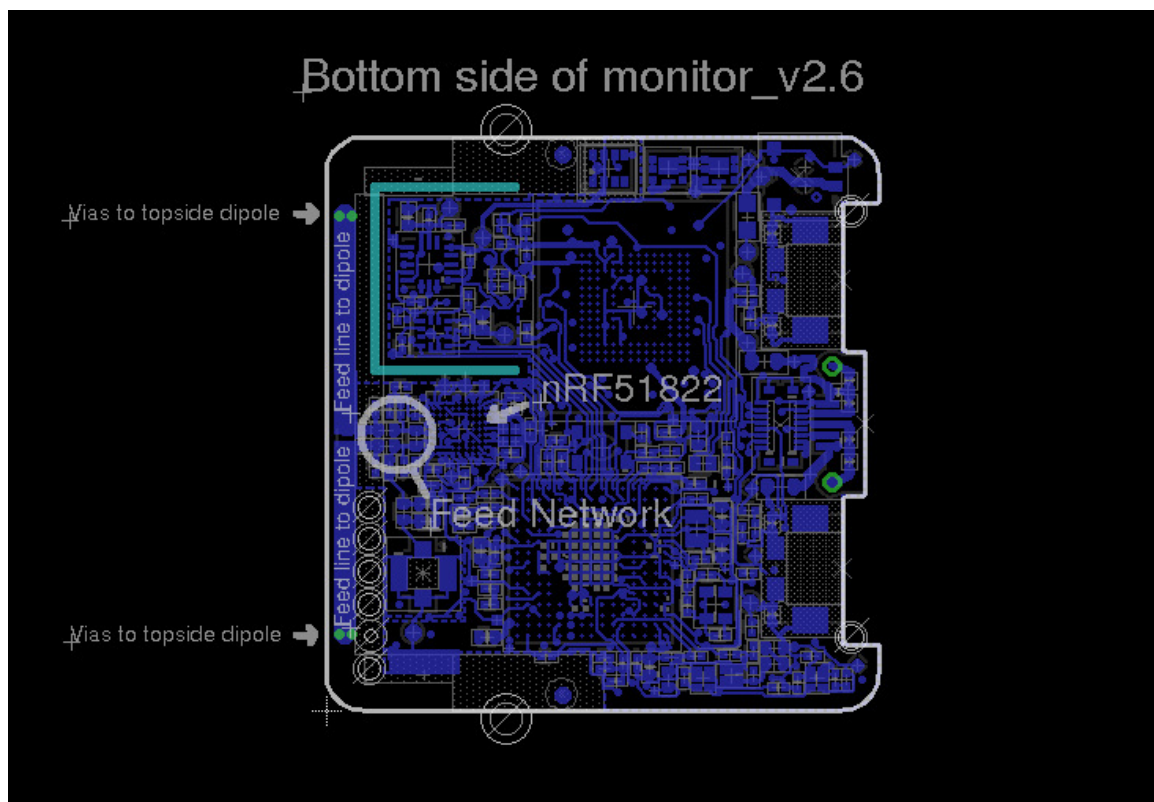
## Antenna Information – Opal

The antenna used within the Opal transmitter is a custom printed dipole antenna.

The gain of the antenna is approximately 2.5 dBi at 2.4 GHz

The antenna is permanently affixed to the Opal printed circuit board, and is not accessible to the end user, thus ensuring compliance with FCC 15.203

Drawing showing Opal antenna:



# Top side of monitor\_v2.6

Dipole radiating end



2015

MW-2.6

ADDA

22pF coupling cap



Vias to bottomside dipole feed



Dipole radiating end

