

**APDM Wearable Technologies Inc**

2828 S Corbett Ave ste 135, Portland, OR 97201

**PROPRIETARY AND CONFIDENTIAL**

# APDM Opal v1 Access Point (AP) Internal Photos

2020-09-23

Contact: Andrew Greenberg ([andrew.g@apdm.com](mailto:andrew.g@apdm.com)), 503-708-7711

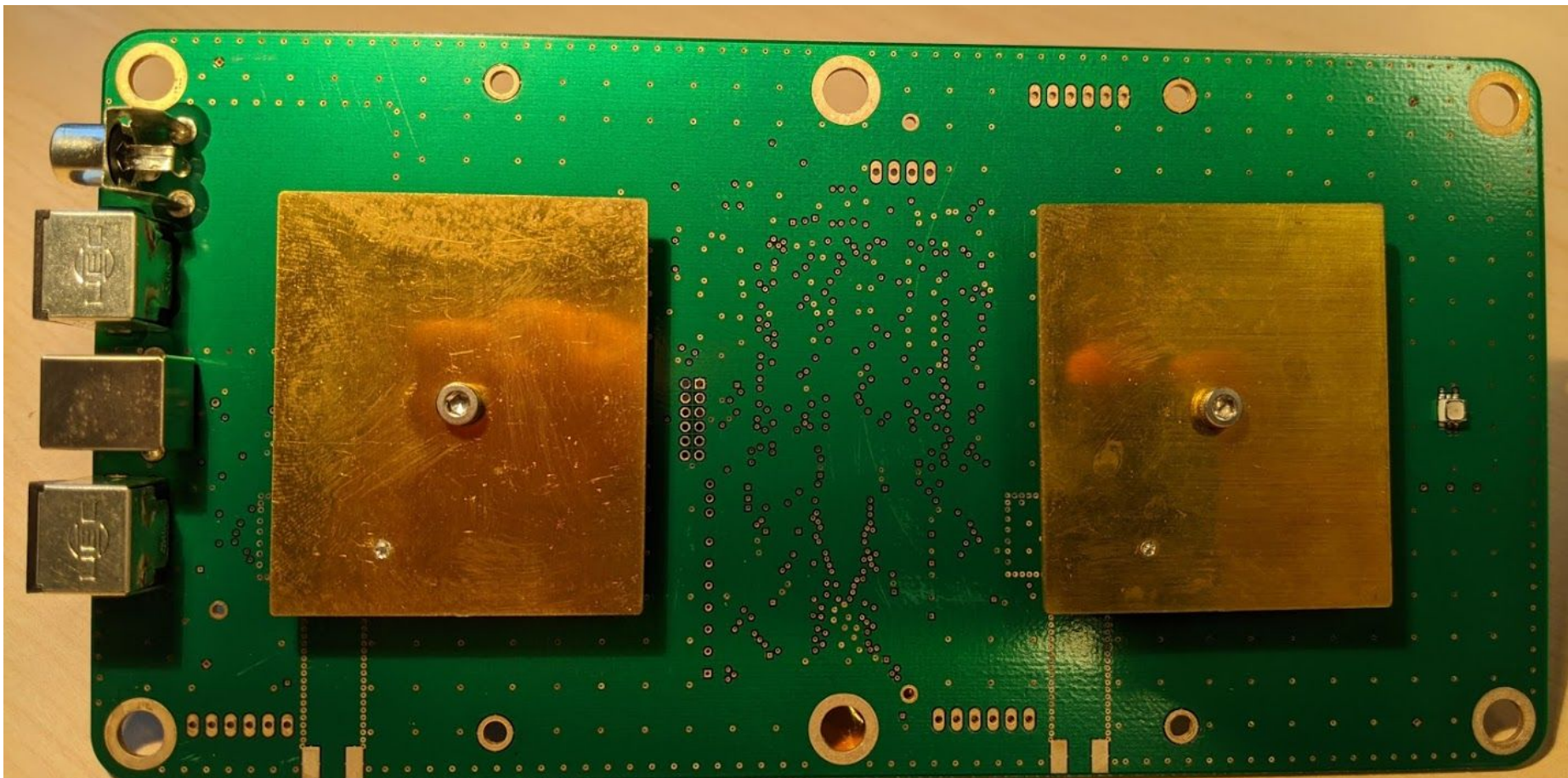


Figure 1: Front of PCBA, showing both 2.4 GHz RHCP patch antennas.  
Note the central fastener and small feed pin in the lower left hand corner of each patch.  
Antenna 1 is on the right, Antenna 2 is on the left.

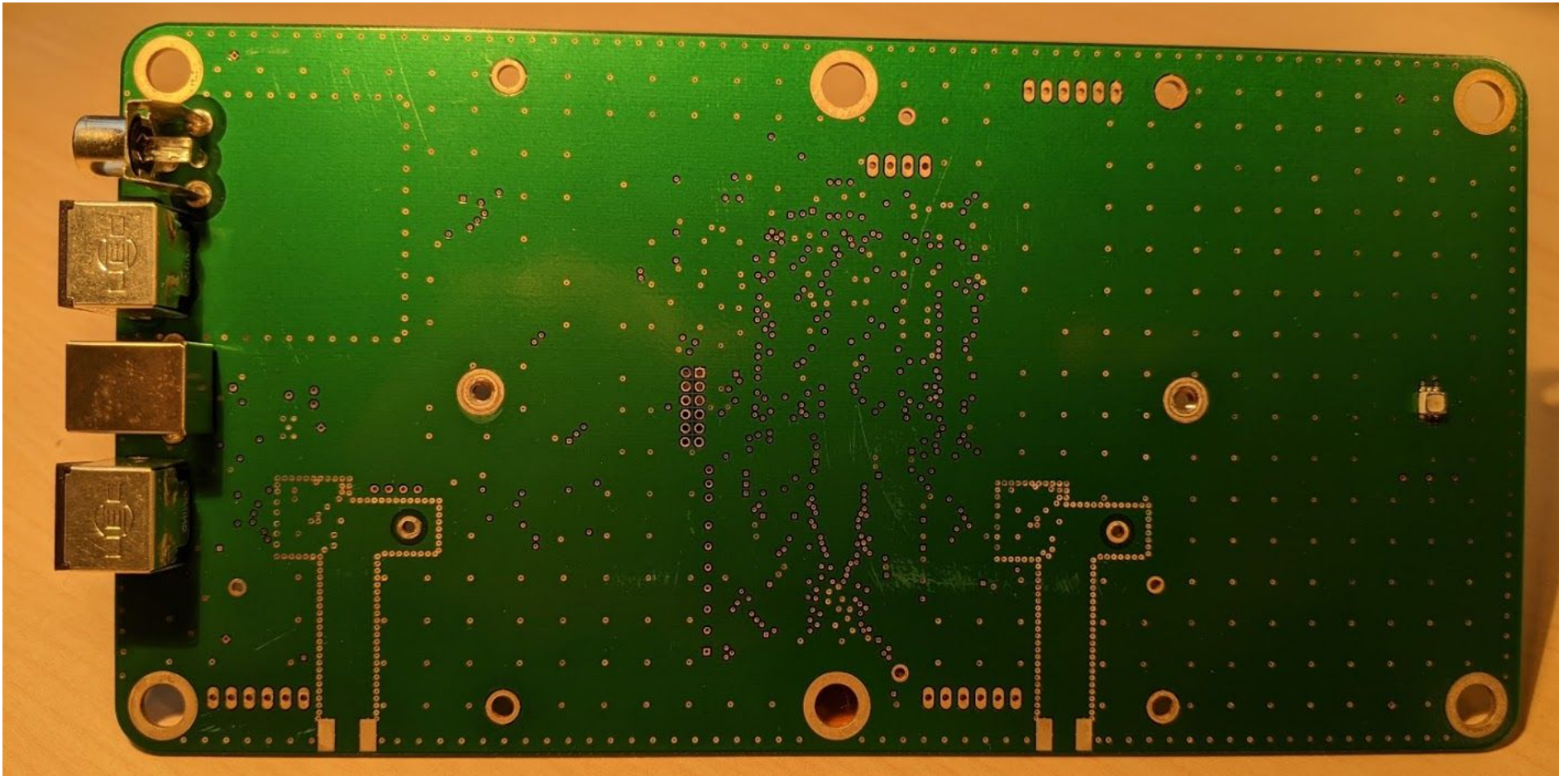


Figure 2: Front of PCBA, with patch antennas removed.  
Note that there are no active components on the top surface of the PCBA.



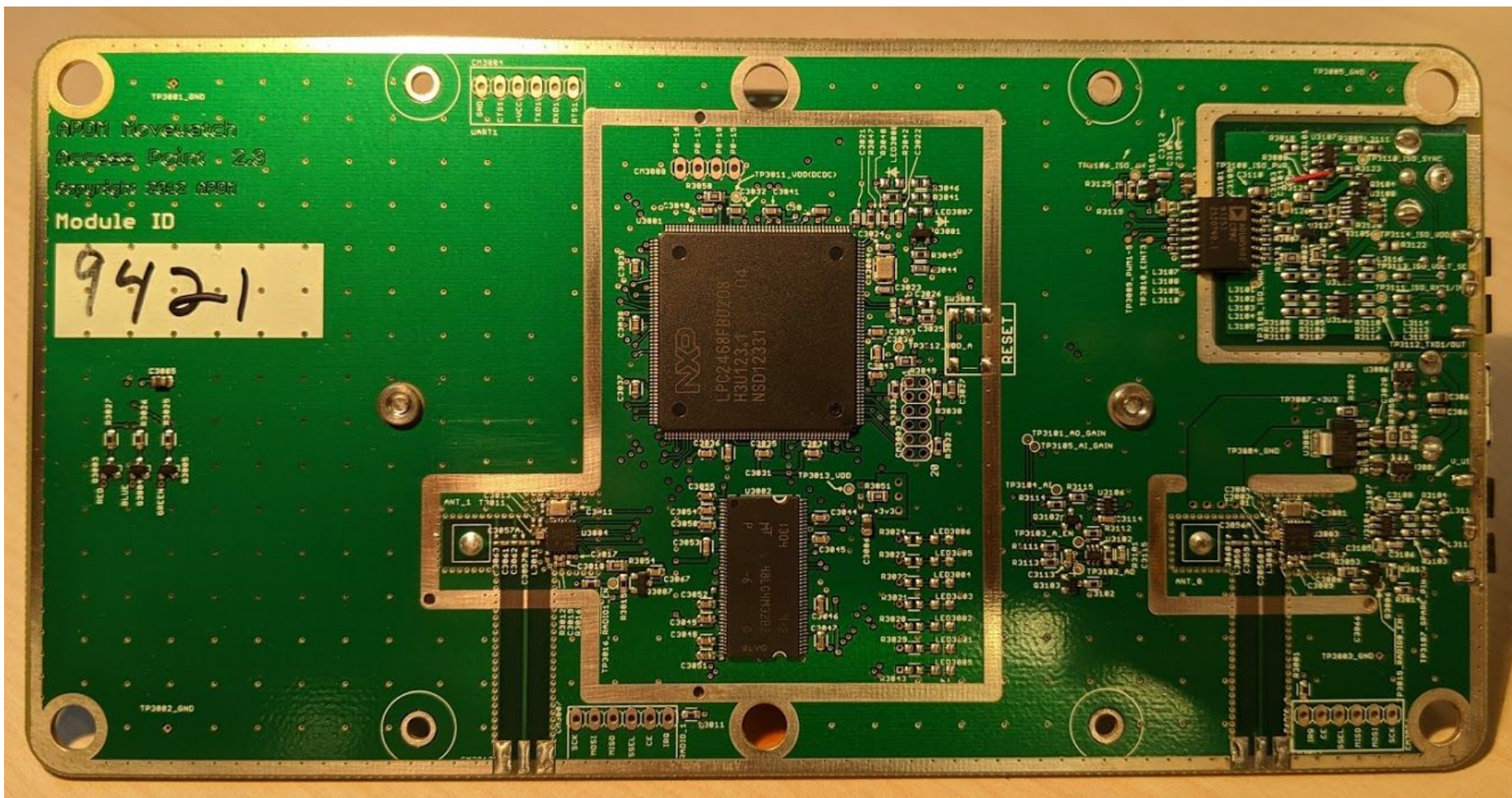


Figure 3: Back of the PCBA, showing the active components.



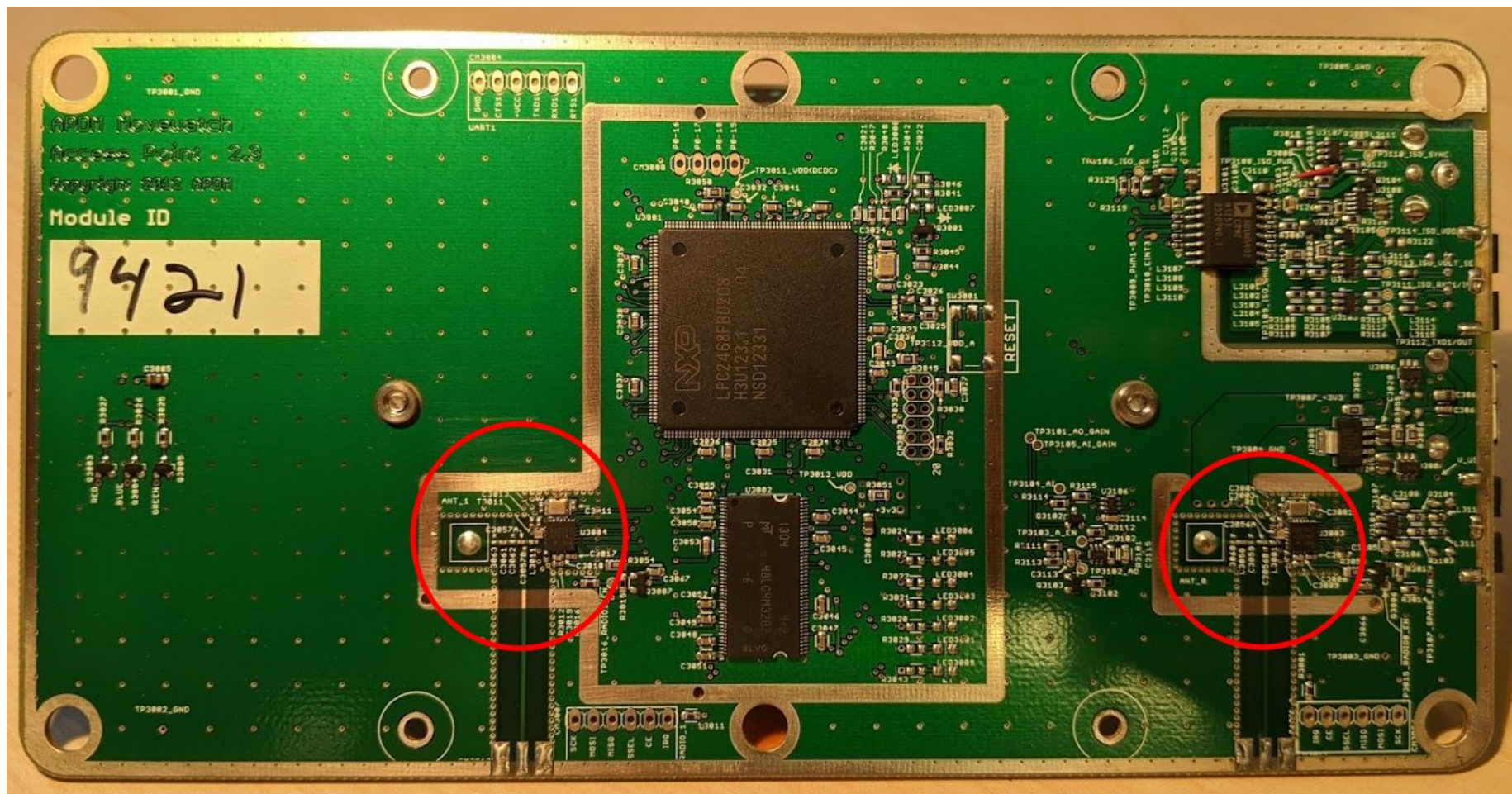


Figure 4: Back of the PCBA, nRF24L01+ radio ICs identified by red circles.  
Radio 1 is on the left, Radio 2 is on the right.

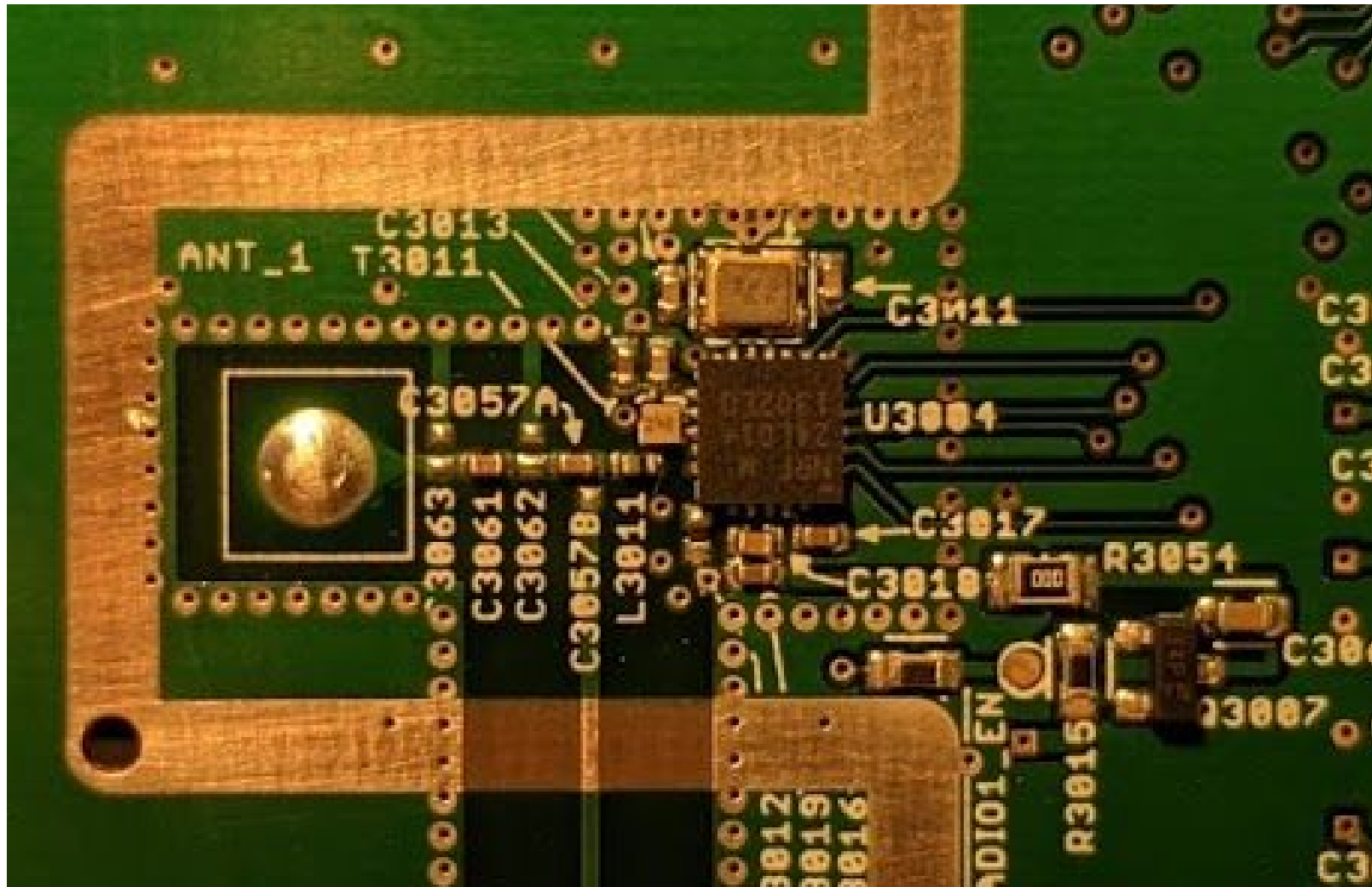


Figure 5: Detail of Radio 1 on back of PCBA which goes to Antenna 1

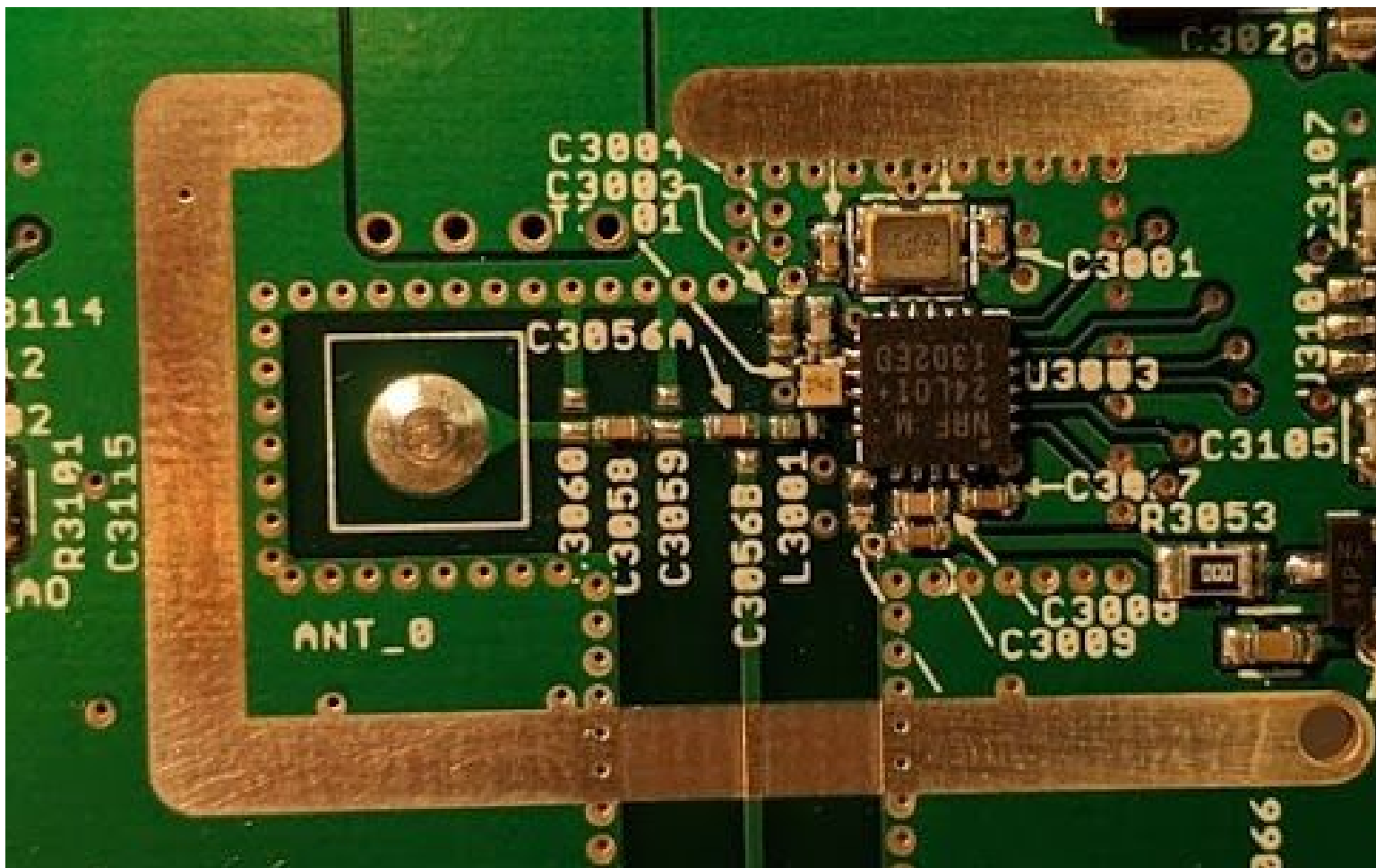


Figure 6: Detail of Radio 2 on back of PCBA which goes to Antenna 2