

SAR Test Report

Part 2 of 3

Project Number: 4942239 **Quotation Number:** SUW-202112002041

Report Number: 4942239EMC05.2 **Revision Level:** 1

Client: Riskband LLC

Equipment Under Test: Wearable Emergency Device

Host Model Name: ARIES

Host Model Number: RBD30060

Host FCC ID: 2AHZ7-300602022

Host IC: 21986-300602022

Module FCC ID: 2AHZ7-R20082B00

Module IC: 21986-R20082B00

Applicable Standards: IEC 62209-1528

Report issued on: 15 November 2022

Test Result: Compliant



FOR THE SCOPE OF ACCREDITATION UNDER CERTIFICATE NUMBER: 3212.01

This report must not be used by the client to claim product certification, approval, or endorsement by A2LA, NIST, or any agency of the Federal Government.

Tested / Evaluated by:

Paul Lorenzo, Senior EMC Technician

Reviewed by:

Stephen C. Whalen, EMC/RF Exposure Manager

Remarks: This document is issued by the Company subject to its General Conditions of Service printed overleaf, available on request or accessible at <http://www.sgs.com/en/Terms-and-Conditions.aspx>. And for electronic format documents, subject to Terms and Conditions for Electronic Documents at <http://www.sgs.com/en/Terms-and-Conditions/terms-e-document.aspx>.

Attention is drawn to the limitation of liability, indemnification and jurisdiction issues defined therein. Any holder of this document is advised that information contained hereon reflects the Company's findings at the time of its intervention only and within the limits of Client's instructions, if any. The Company's sole responsibility is to its Client and this document does not exonerate parties to a transaction from exercising all their rights and obligations under the transaction documents. This document cannot be reproduced except in full, without prior written approval of the Company. Any unauthorized alteration, forgery or falsification of the content or appearance of this document is unlawful and offenders may be prosecuted to the fullest extent of the law. Unless otherwise stated the results shown in this test report refer only to the sample(s) tested and such sample(s) are retained for a maximum of 30 days only.



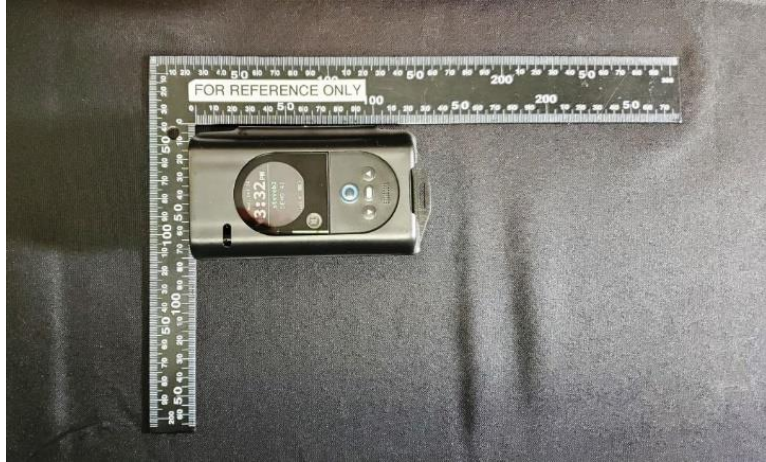
Table of Contents

APPENDIX A - PHOTOS OF EUT AND TEST POSITION(S)..... 3
APPENDIX B - LTE DATA 5
APPENDIX D – SYSTEM VERIFICATIONS 11
REVISION HISTORY 16

APPENDIX A - PHOTOS OF EUT AND TEST POSITION(S)

EUT Standalone

Front



Side



Back



EUT Test Position



EUT with holster clip against flat area of phantom with 0mm spacing

APPENDIX B - LTE DATA

Test Laboratory: SGS SAR Laboratory North America

Date/Time: 10/14/2022 12:33:49 PM

Plot #1

DUT: Risk Band RBD30060

DASY5 Configuration:

- Communication System: UID 10169 - CAE, LTE-FDD (SC-FDMA, 1 RB, 20 MHz, QPSK); Frequency: 1880 MHz;
- Probe: ES3DV3 - SN3272; ConvF(5, 5, 5) @ 1880 MHz; Calibrated: 3/1/2022
- Medium parameters used: $f = 1880$ MHz; $\sigma = 1.398$ S/m; $\epsilon_r = 36.265$; $\rho = 1000$ kg/m³; Phantom: ELI v5.0; Phantom section: Flat Section
- Electronics: DAE4 Sn1287; Calibrated: 2/23/2022
- Measurement SW: DASY52, Version 52.10 (4); SEMCAD X Version 14.6.14 (7483)

Below 2GHz Body/Body Scan/Area Scan (61x101x1):

Interpolated grid: dx=1.500 mm, dy=1.500 mm

Reference Value = 18.17 V/m; Power Drift = -0.39 dB

Below 2GHz Body/Body Scan/Zoom Scan 2 (5x5x7)/Cube 0:

Measurement grid: dx=7.5mm, dy=7.5mm, dz=5mm

Reference Value = 18.17 V/m; Power Drift = -0.39 dB

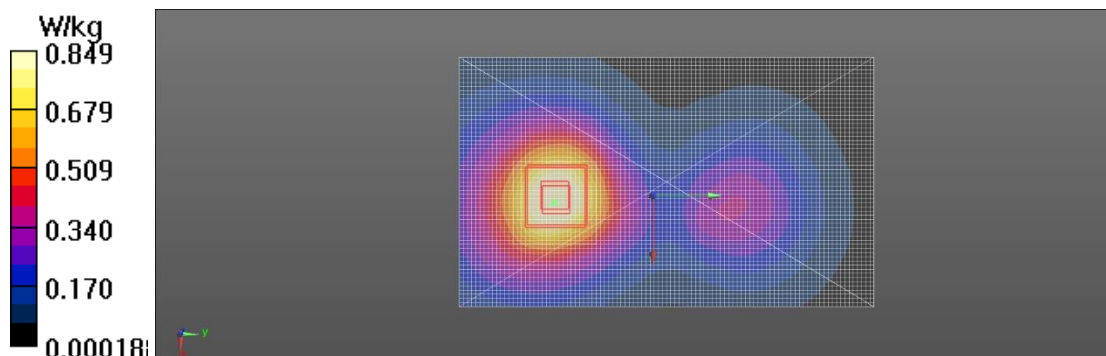
Peak SAR (extrapolated) = 1.14 W/kg

SAR(1 g) = 0.716 W/kg; SAR(10 g) = 0.439 W/kg (SAR corrected for target medium)

Smallest distance from peaks to all points 3 dB below = 22.9 mm

Ratio of SAR at M2 to SAR at M1 = 62.5%

Maximum value of SAR (measured) = 0.859 W/kg



Test Laboratory: SGS SAR Laboratory North America

Date/Time: 10/17/2022 11:39:37 AM

Plot #2

DUT: Risk Band RBD30060

DASY5 Configuration:

- Communication System: UID 10169 - CAE, LTE-FDD (SC-FDMA, 1 RB, 20 MHz, QPSK); Frequency: 1754.3 MHz;
- Probe: ES3DV3 - SN3272; ConvF(5.13, 5.13, 5.13) @ 1754.3 MHz; Calibrated: 3/1/2022
- Medium parameters used (interpolated): $f = 1754.3$ MHz; $\sigma = 1.309$ S/m; $\epsilon_r = 36.362$; $\rho = 1000$ kg/m³ ; Phantom: ELI v5.0; Phantom section: Flat Section
- Electronics: DAE4 Sn1287; Calibrated: 2/23/2022
- Measurement SW: DASY52, Version 52.10 (4); SEMCAD X Version 14.6.14 (7483)

Below 2GHz Body/Body Scan/Area Scan (61x101x1):

Interpolated grid: dx=1.500 mm, dy=1.500 mm
 Reference Value = 18.03 V/m; Power Drift = -0.25 dB

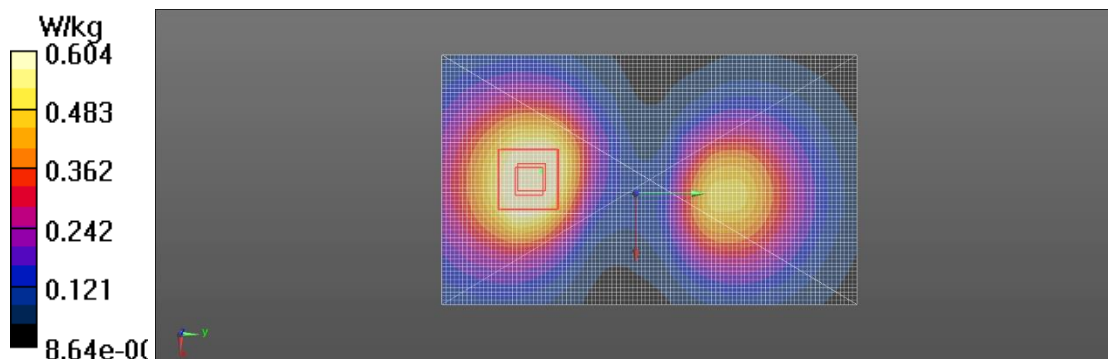
Below 2GHz Body/Body Scan/Zoom Scan 2 (5x5x7)/Cube 0:

Measurement grid: dx=7.5mm, dy=7.5mm, dz=5mm
 Reference Value = 18.03 V/m; Power Drift = -0.25 dB
 Peak SAR (extrapolated) = 0.794 W/kg

SAR(1 g) = 0.546 W/kg; SAR(10 g) = 0.348 W/kg (SAR corrected for target medium)
 Smallest distance from peaks to all points 3 dB below = 19 mm
 Ratio of SAR at M2 to SAR at M1 = 66.6%

Info: Interpolated medium parameters used for SAR evaluation.

Maximum value of SAR (measured) = 0.617 W/kg



Test Laboratory: SGS SAR Laboratory North America

Date/Time: 10/17/2022 1:57:14 PM

Plot #3

DUT: Risk Band RBD30060

DASY5 Configuration:

- Communication System: UID 10154 - CAG, LTE-FDD (SC-FDMA, 50% RB, 10 MHz, QPSK); Frequency: 848.3 MHz;
- Probe: ES3DV3 - SN3272; ConvF(5.82, 5.82, 5.82) @ 848.3 MHz; Calibrated: 3/1/2022
- Medium parameters used (interpolated): $f = 848.3$ MHz; $\sigma = 0.903$ S/m; $\epsilon_r = 38.193$; $\rho = 1000$ kg/m³ ; Phantom: ELI v5.0; Phantom section: Flat Section
- Electronics: DAE4 Sn1287; Calibrated: 2/23/2022
- Measurement SW: DASY52, Version 52.10 (4); SEMCAD X Version 14.6.14 (7483)

Below 2GHz Body/Body Scan/Area Scan (61x101x1):

Interpolated grid: dx=1.500 mm, dy=1.500 mm

Reference Value = 19.73 V/m; Power Drift = -0.04 dB

Below 2GHz Body/Body Scan/Zoom Scan 2 (5x5x7)/Cube 0:

Measurement grid: dx=7.5mm, dy=7.5mm, dz=5mm

Reference Value = 19.73 V/m; Power Drift = -0.04 dB

Peak SAR (extrapolated) = 0.406 W/kg

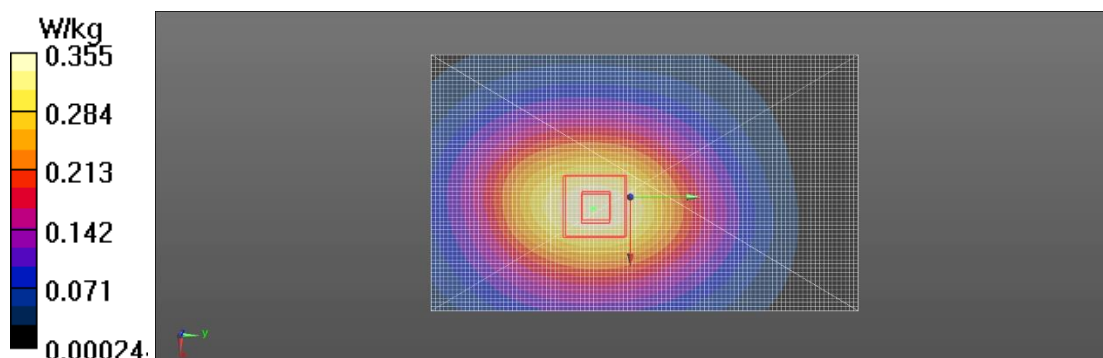
SAR(1 g) = 0.310 W/kg; SAR(10 g) = 0.223 W/kg (SAR corrected for target medium)

Smallest distance from peaks to all points 3 dB below: Larger than measurement grid

Ratio of SAR at M2 to SAR at M1 = 75.2%

[Info: Interpolated medium parameters used for SAR evaluation.](#)

Maximum value of SAR (measured) = 0.349 W/kg



Test Laboratory: SGS SAR Laboratory North America

Date/Time: 10/18/2022 10:36:13 AM

Plot #4

DUT: Risk Band RBD30060

DASY5 Configuration:

- Communication System: UID 10154 - CAG, LTE-FDD (SC-FDMA, 50% RB, 10 MHz, QPSK); Frequency: 715.3 MHz;
- Probe: ES3DV3 - SN3272; ConvF(6.23, 6.23, 6.23) @ 715.3 MHz; Calibrated: 3/1/2022
- Medium parameters used (interpolated): $f = 715.3$ MHz; $\sigma = 0.882$ S/m; $\epsilon_r = 39.392$; $\rho = 1000$ kg/m³ ; Phantom: ELI v5.0; Phantom section: Flat Section
- Electronics: DAE4 Sn1287; Calibrated: 2/23/2022
- Measurement SW: DASY52, Version 52.10 (4); SEMCAD X Version 14.6.14 (7483)

Below 2GHz Body/Body Scan/Area Scan (61x101x1):

Interpolated grid: dx=1.500 mm, dy=1.500 mm
 Reference Value = 21.80 V/m; Power Drift = 0.06 dB

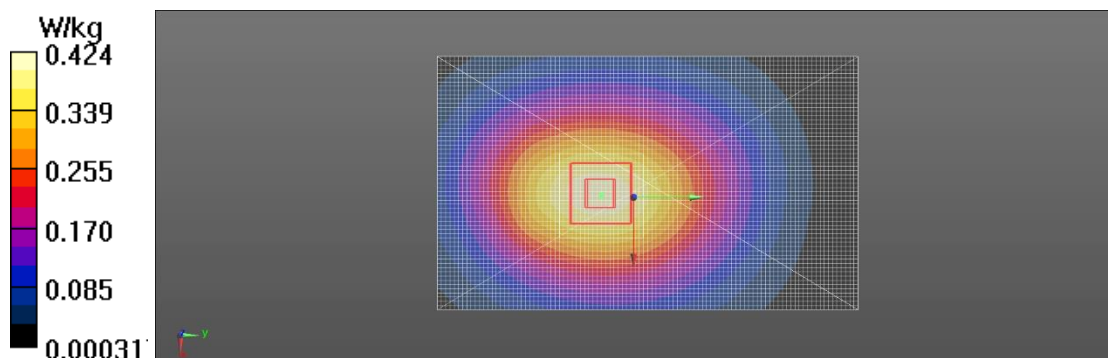
Below 2GHz Body/Body Scan/Zoom Scan 2 (5x5x7)/Cube 0:

Measurement grid: dx=7.5mm, dy=7.5mm, dz=5mm
 Reference Value = 21.80 V/m; Power Drift = 0.06 dB
 Peak SAR (extrapolated) = 0.484 W/kg

SAR(1 g) = 0.371 W/kg; SAR(10 g) = 0.270 W/kg (SAR corrected for target medium)
 Smallest distance from peaks to all points 3 dB below: Larger than measurement grid
 Ratio of SAR at M2 to SAR at M1 = 75.8%

Info: Interpolated medium parameters used for SAR evaluation.

Maximum value of SAR (measured) = 0.419 W/kg



Test Laboratory: SGS SAR Laboratory North America

Date/Time: 10/20/2022 12:17:31 PM

Plot 5

DUT: Risk Band RBD30060

DASY5 Configuration:

- Communication System: UID 10012 - CAB, IEEE 802.11b WiFi 2.4 GHz (DSSS, 1 Mbps); Frequency: 2412 MHz;
- Probe: ES3DV3 - SN3272; ConvF(4.59, 4.59, 4.59) @ 2412 MHz; Calibrated: 3/1/2022
- Medium parameters used: $f = 2412$ MHz; $\sigma = 1.716$ S/m; $\epsilon_r = 36.001$; $\rho = 1000$ kg/m³; Phantom: ELI v5.0; Phantom section: Flat Section
- Electronics: DAE4 Sn1287; Calibrated: 2/23/2022
- Measurement SW: DASY52, Version 52.10 (4); SEMCAD X Version 14.6.14 (7483)

2-3GHz Body/Body Scan/Area Scan (71x121x1):

Interpolated grid: dx=1.200 mm, dy=1.200 mm

Reference Value = 1.081 V/m; Power Drift = -0.89 dB

2-3GHz Body/Body Scan/Zoom Scan (6x6x7)/Cube 0:

Measurement grid: dx=7.5mm, dy=7.5mm, dz=5mm

Reference Value = 1.081 V/m; Power Drift = -0.89 dB

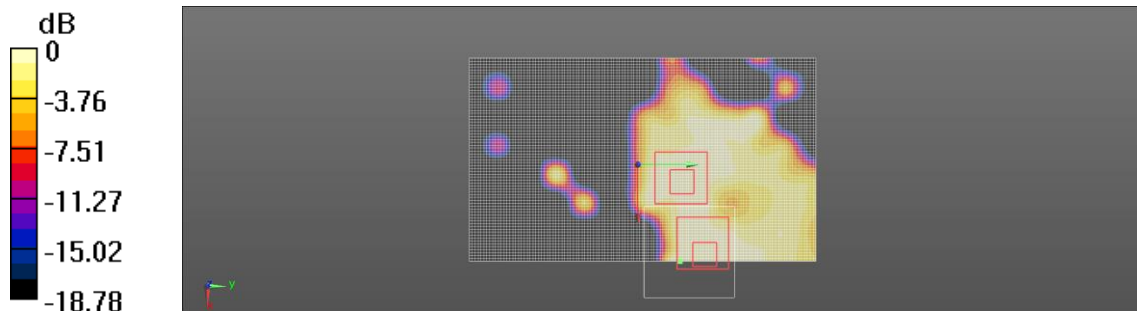
Peak SAR (extrapolated) = 0.0120 W/kg

SAR(1 g) = 0.00246 W/kg; SAR(10 g) = 0.000962 W/kg (SAR corrected for target medium)

Smallest distance from peaks to all points 3 dB below: Larger than measurement grid

Ratio of SAR at M2 to SAR at M1 = 48.3%

Maximum value of SAR (measured) = 0.00324 W/kg



Test Laboratory: SGS SAR Laboratory North America

Date/Time: 10/20/2022 2:01:16 PM

Plot #6

DUT: Risk Band RBD30060

DASY5 Configuration:

- Communication System: UID 10038 - CAA, IEEE 802.15.1 Bluetooth (8-DPSK, DH5); Frequency: 2480 MHz;
- Probe: ES3DV3 - SN3272; ConvF(4.59, 4.59, 4.59) @ 2480 MHz; Calibrated: 3/1/2022
- Medium parameters used: $f = 2480$ MHz; $\sigma = 1.764$ S/m; $\epsilon_r = 35.901$; $\rho = 1000$ kg/m³; Phantom: ELI v5.0; Phantom section: Flat Section
- Electronics: DAE4 Sn1287; Calibrated: 2/23/2022
- Measurement SW: DASY52, Version 52.10 (4); SEMCAD X Version 14.6.14 (7483)

2-3GHz Body/Body Scan/Area Scan (71x121x1):

Interpolated grid: dx=1.200 mm, dy=1.200 mm
 Reference Value = 0.6430 V/m; Power Drift = -5.04 dB

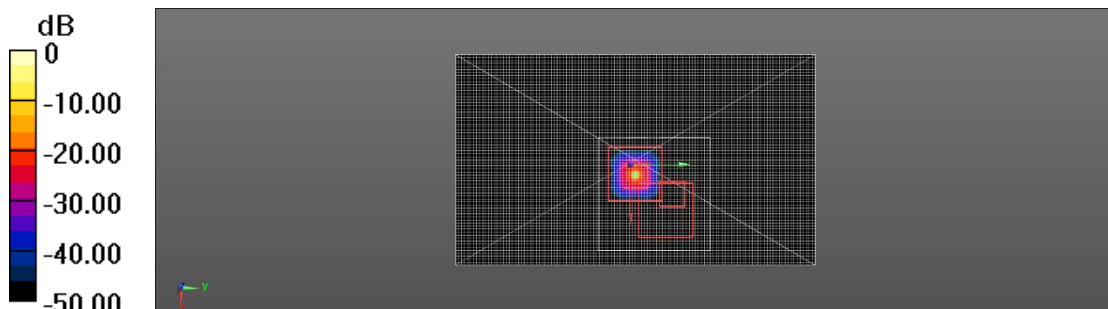
2-3GHz Body/Body Scan/Zoom Scan (7x7x7)/Cube 0:

Measurement grid: dx=7.5mm, dy=7.5mm, dz=5mm
 Reference Value = 0.6430 V/m; Power Drift = -5.04 dB
 Peak SAR (extrapolated) = 0.00171 W/kg

SAR(1 g) = 7.96e-005 W/kg; SAR(10 g) = 9.15e-006 W/kg (SAR corrected for target medium)
 Smallest distance from peaks to all points 3 dB below: Larger than measurement grid
 Ratio of SAR at M2 to SAR at M1 = 14.2%
 Maximum value of SAR (measured) = 0.00171 W/kg

Comments:

Signal was verified and monitored during testing using a spectrum analyzer.



APPENDIX D – SYSTEM VERIFICATIONS

Test Laboratory: SGS SAR Laboratory North America Date/Time: 10/14/2022 9:48:56 AM

DUT: Dipole 1900 MHz D1900V2

DASY5 Configuration:

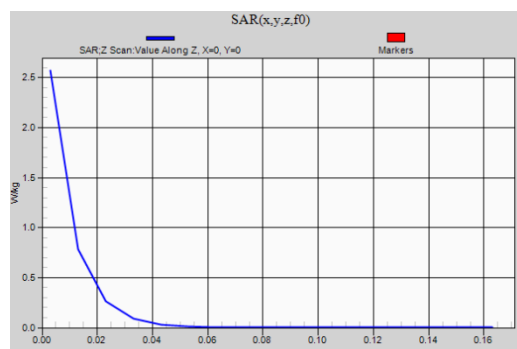
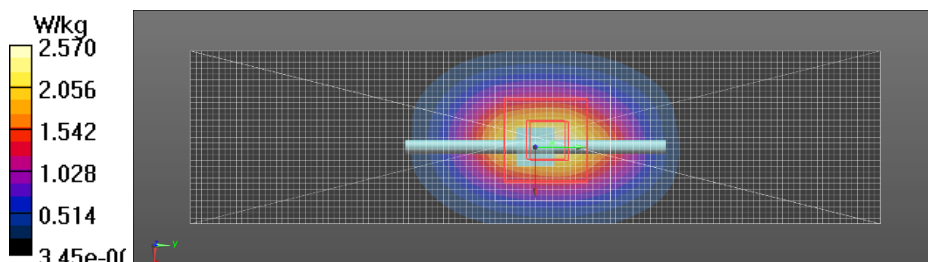
- Communication System: UID 0, CW (0); Frequency: 1900 MHz;
- Probe: ES3DV3 - SN3272; ConvF(5, 5, 5) @ 1900 MHz; Calibrated: 3/1/2022
- Medium parameters used: $f = 1900$ MHz; $\sigma = 1.409$ S/m; $\epsilon_r = 36.237$; $\rho = 1000$ kg/m³; Phantom: ELI v5.0; Phantom section: Flat Section
- Electronics: DAE4 Sn1287; Calibrated: 2/23/2022
- Measurement SW: DASY52, Version 52.10 (4); SEMCAD X Version 14.6.14 (7483)

System validation below 2GHz/System verification/Dipole Area Scan 2 (31x121x1): Interpolated grid:
 dx=1.500 mm, dy=1.500 mm
 Reference Value = 43.64 V/m; Power Drift = 0.12 dB

System validation below 2GHz/System verification/0 degree Zoom Scan (5x5x7)/Cube 0:
 Measurement grid: dx=7.5mm, dy=7.5mm, dz=5mm
 Reference Value = 43.64 V/m; Power Drift = 0.12 dB
 Peak SAR (extrapolated) = 3.65 W/kg

SAR(1 g) = 1.94 W/kg; SAR(10 g) = 1.01 W/kg (SAR corrected for target medium)
 Smallest distance from peaks to all points 3 dB below = 10.5 mm
 Ratio of SAR at M2 to SAR at M1 = 54.7%
 Maximum value of SAR (measured) = 2.54 W/kg

System validation below 2GHz/System verification/Z Scan (1x1x17):
 Measurement grid: dx=20mm, dy=20mm, dz=10mm
 Maximum value of SAR (measured) = 2.57 W/kg



Test Laboratory: SGS SAR Laboratory North America
Date/Time: 10/17/2022 10:54:28 AM

DUT: Dipole 1750 MHz D1750V2

DASY5 Configuration:

- Communication System: UID 0, CW (0); Frequency: 1750 MHz;
- Probe: ES3DV3 - SN3272; ConvF(5.13, 5.13, 5.13) @ 1750 MHz; Calibrated: 3/1/2022
- Medium parameters used: $f = 1750$ MHz; $\sigma = 1.307$ S/m; $\epsilon_r = 36.369$; $\rho = 1000$ kg/m³; Phantom: ELI v5.0; Phantom section: Flat Section
- Electronics: DAE4 Sn1287; Calibrated: 2/23/2022
- Measurement SW: DASY52, Version 52.10 (4); SEMCAD X Version 14.6.14 (7483)

System validation below 2GHz/System verification/Dipole Area Scan 2 (31x121x1): Interpolated grid:

$dx=1.500$ mm, $dy=1.500$ mm

Reference Value = 43.30 V/m; Power Drift = -0.04 dB

System validation below 2GHz/System verification/0 degree Zoom Scan (5x5x7)/Cube 0:

Measurement grid: $dx=7.5$ mm, $dy=7.5$ mm, $dz=5$ mm

Reference Value = 43.30 V/m; Power Drift = -0.04 dB

Peak SAR (extrapolated) = 3.14 W/kg

SAR(1 g) = 1.79 W/kg; SAR(10 g) = 0.950 W/kg (SAR corrected for target medium)

Smallest distance from peaks to all points 3 dB below = 10.5 mm

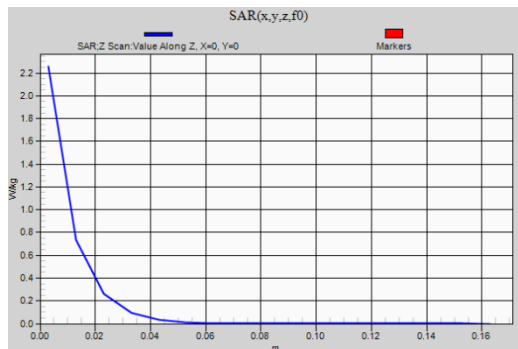
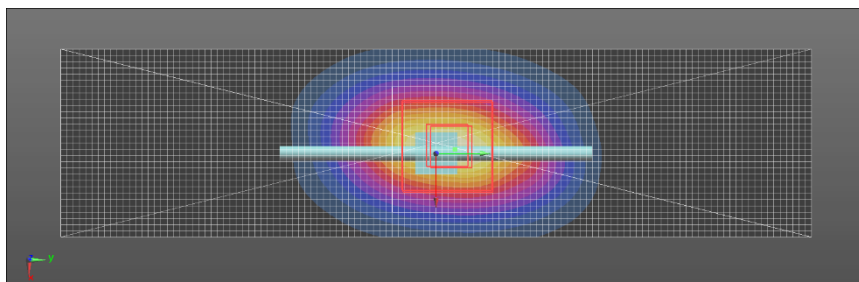
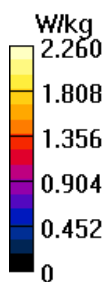
Ratio of SAR at M2 to SAR at M1 = 56.6%

Maximum value of SAR (measured) = 2.24 W/kg

System validation below 2GHz/System verification/Z Scan (1x1x17): Measurement grid: $dx=20$ mm,

$dy=20$ mm, $dz=10$ mm

Maximum value of SAR (measured) = 2.26 W/kg



Test Laboratory: SGS SAR Laboratory North America
Date/Time: 10/17/2022 12:47:04 PM

DUT: Dipole 835 MHz D835V2

DASY5 Configuration:

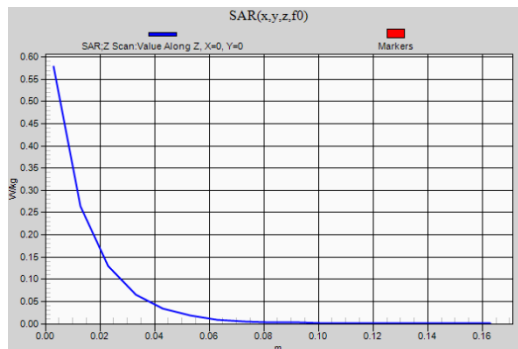
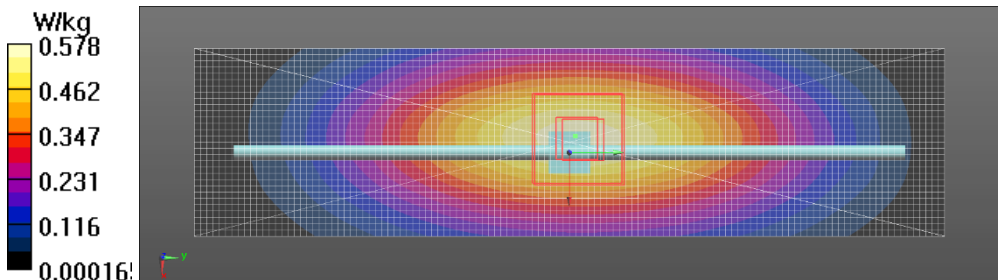
- Communication System: UID 0, CW (0); Frequency: 835 MHz;
- Probe: ES3DV3 - SN3272; ConvF(5.82, 5.82, 5.82) @ 835 MHz; Calibrated: 3/1/2022
- Medium parameters used: f = 835 MHz; $\sigma = 0.898$ S/m; $\epsilon_r = 38.234$; $\rho = 1000$ kg/m³; Phantom: ELI v5.0; Phantom section: Flat Section
- Electronics: DAE4 Sn1287; Calibrated: 2/23/2022
- Measurement SW: DASY52, Version 52.10 (4); SEMCAD X Version 14.6.14 (7483)

System validation below 2GHz/System verification/Dipole Area Scan 2 (31x121x1): Interpolated grid:
 dx=1.500 mm, dy=1.500 mm
 Reference Value = 26.15 V/m; Power Drift = 0.02 dB

System validation below 2GHz/System verification/0 degree Zoom Scan (5x5x7)/Cube 0:
 Measurement grid: dx=7.5mm, dy=7.5mm, dz=5mm
 Reference Value = 26.15 V/m; Power Drift = 0.02 dB
 Peak SAR (extrapolated) = 0.723 W/kg

SAR(1 g) = 0.492 W/kg; SAR(10 g) = 0.322 W/kg (SAR corrected for target medium)
 Smallest distance from peaks to all points 3 dB below: Larger than measurement grid
 Ratio of SAR at M2 to SAR at M1 = 67.6%
 Maximum value of SAR (measured) = 0.578 W/kg

System validation below 2GHz/System verification/Z Scan (1x1x17):
 Measurement grid: dx=20mm, dy=20mm, dz=10mm
 Maximum value of SAR (measured) = 0.578 W/kg



Test Laboratory: SGS SAR Laboratory North America
Date/Time: 10/18/2022 9:22:23 AM

DUT: Dipole 750 MHz D750V3

DASY5 Configuration:

- Communication System: UID 0, CW (0); Frequency: 750 MHz;
- Probe: ES3DV3 - SN3272; ConvF(6.23, 6.23, 6.23) @ 750 MHz; Calibrated: 3/1/2022
- Medium parameters used: $f = 750$ MHz; $\sigma = 0.894$ S/m; $\epsilon_r = 39.234$; $\rho = 1000$ kg/m³; Phantom: ELI v5.0; Phantom section: Flat Section
- Electronics: DAE4 Sn1287; Calibrated: 2/23/2022
- Measurement SW: DASY52, Version 52.10 (4); SEMCAD X Version 14.6.14 (7483)

System validation below 2GHz/System verification/Dipole Area Scan 2 (31x121x1):

Interpolated grid: dx=1.500 mm, dy=1.500 mm
 Reference Value = 24.42 V/m; Power Drift = 0.02 dB

System validation below 2GHz/System verification/0 degree Zoom Scan (5x5x7)/Cube 0:

Measurement grid: dx=7.5mm, dy=7.5mm, dz=5mm
 Reference Value = 24.42 V/m; Power Drift = 0.02 dB
 Peak SAR (extrapolated) = 0.625 W/kg

SAR(1 g) = 0.416 W/kg; SAR(10 g) = 0.274 W/kg (SAR corrected for target medium)

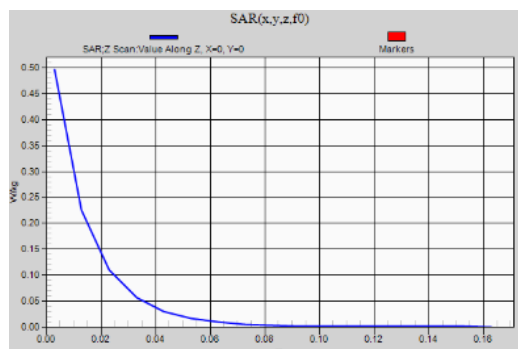
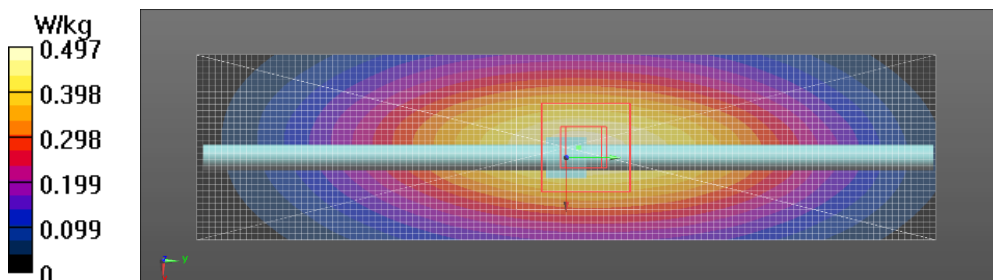
Smallest distance from peaks to all points 3 dB below: Larger than measurement grid

Ratio of SAR at M2 to SAR at M1 = 67.2%

Maximum value of SAR (measured) = 0.497 W/kg

System validation below 2GHz/System verification/Z Scan (1x1x17):

Measurement grid: dx=20mm, dy=20mm, dz=10mm
 Maximum value of SAR (measured) = 0.497 W/kg



Test Laboratory: SGS SAR Laboratory North America
Date/Time: 10/20/2022 10:37:15 AM

DUT: Dipole 2450 MHz D2450V2

DASY5 Configuration:

- Communication System: UID 0, CW (0); Frequency: 2450 MHz;
- Probe: ES3DV3 - SN3272; ConvF(4.59, 4.59, 4.59) @ 2450 MHz; Calibrated: 3/1/2022
- Medium parameters used: $f = 2450$ MHz; $\sigma = 1.743$ S/m; $\epsilon_r = 35.947$; $\rho = 1000$ kg/m³; Phantom: ELI v5.0; Phantom section: Flat Section
- Electronics: DAE4 Sn1287; Calibrated: 2/23/2022
- Measurement SW: DASY52, Version 52.10 (4); SEMCAD X Version 14.6.14 (7483)

System validation 2-3GHz rev1/System verification/Dipole Area Scan 2 (41x71x1): Interpolated grid:

$dx=1.200$ mm, $dy=1.200$ mm
 Reference Value = 47.70 V/m; Power Drift = 0.03 dB

System validation 2-3GHz rev1/System verification/0 degree Zoom Scan (7x7x7)/Cube 0:

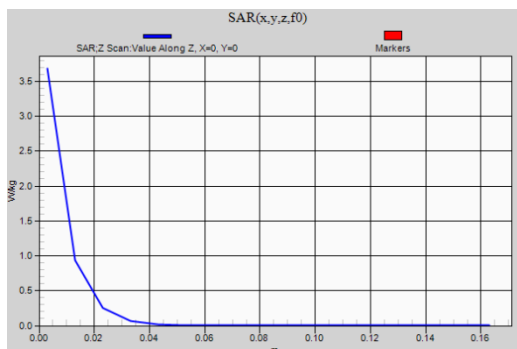
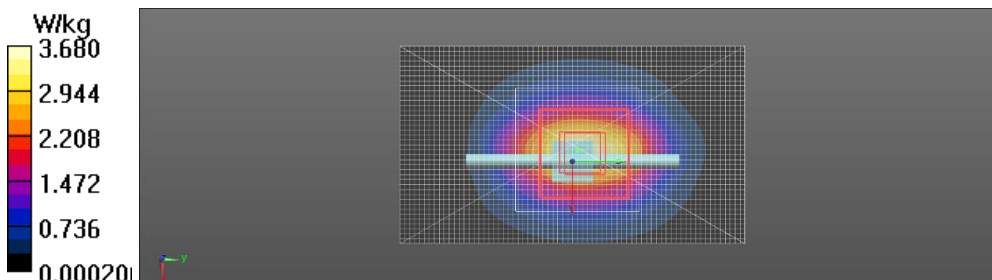
Measurement grid: $dx=5$ mm, $dy=5$ mm, $dz=5$ mm
 Reference Value = 47.70 V/m; Power Drift = 0.03 dB
 Peak SAR (extrapolated) = 5.63 W/kg

SAR(1 g) = 2.78 W/kg; SAR(10 g) = 1.3 W/kg (SAR corrected for target medium)

Smallest distance from peaks to all points 3 dB below = 9.5 mm
 Ratio of SAR at M2 to SAR at M1 = 50.4%
 Maximum value of SAR (measured) = 3.66 W/kg

System validation 2-3GHz rev1/System verification/Z Scan (1x1x17):

Measurement grid: $dx=20$ mm, $dy=20$ mm, $dz=10$ mm
 Maximum value of SAR (measured) = 3.68 W/kg



REVISION HISTORY

Revision Level	Description of changes	Revision Date
0	Initial release	15 November 2022
1	Cover Page - Module FCC/IC IDs were added.	26 January 2023