

CHARGING

- 1 Open USB door and connect the cable to a computer or USB power source to charge.
- 2 Light will turn solid red when charging and turn blue when fully charged.
- 3 To ensure the water resistance of your JBuds Pro, the cover for the Micro USB port must be firmly closed.

FITTING

- 1 Rotate Earbud to desired position. Move ear tip to desired position.
- 2 ATP (ADJUSTABLE TIP PLACEMENT)
POSITION 1: Snug, Deeper Fit
POSITION 2: Relaxed, Shallow Fit
- 3 Try various ear tips and Cush Fins™ to find the best fit.
- 4 Attach the optional apparel clip behind the cable clip.

Warm-up Your Headphones

Optional: Burn-in your audio equipment with the JLab Audio App or access the burn-in method at: jlabaudio.com/burnin

JLab Audio + Burn-in Tool

3 MONTHS pandora FREE

With purchase, Visit jlabaudio.com/pandoraoffer

US Compliance

FCC Information

FCC ID: 24HYUNVMC2

This equipment has been tested and found to comply with the limits for a Class B digital device, pursuant to Part 15 of the FCC Rules. These limits are designed to provide reasonable protection against harmful interference in a residential installation. This equipment generates, uses and can radiate radio frequency energy and, if not installed and used in accordance with the instructions, may cause harmful interference to radio communications. However, there is no guarantee that interference will not occur in a particular installation. If this equipment does cause harmful interference to radio or television reception, which can be determined by turning the equipment off and on, the user is encouraged to try to correct the interference by one or more of the following measures:

- Reorient or relocate the receiving antenna.
- Increase the separation between the equipment and receiver.
- Connect the equipment into an outlet different from that to which the receiver is connected.
- Consult the dealer or an experienced radio/TV technician for help.

If you cannot eliminate the interference, the FCC requires that you stop using your product. Changes or modifications not expressly by the party responsible for compliance could void the user's authority to operate the equipment.

This device complies with Part 15 of the FCC Rules. Operation is subject to the following two conditions: (1) this device may not cause harmful interference, and (2) this device must accept any interference received, including interference that may cause undesired operation.

EU Compliance

PEAC LLC dba JLab Audio hereby declares that this device is in compliance with the essential requirements and other relevant provisions of the RED directive.

A copy of the EU Declaration of Conformity is available at jlabaudio.com/compliance

JLab Audio 2281 Las Palmas Drive, Suite 101, Carlsbad, CA 92011, USA

The symbol above indicates that this product and/or battery should not be disposed of with household waste. When you decide to dispose of this product and/or its battery, do so in accordance with local environmental laws and guidelines.

Battery Caution & Disposal Information

Please take care of your battery. Do not: disassemble, burn, puncture, crush or bend your battery. Improper operation of the battery may produce smoke. In such an event, ventilate the area. Extinguish any flames with carbon dioxide, dry-powder fire extinguisher, or cover with sand or mud. Take care to avoid conditions of excessive moisture for prolonged periods and do not immerse. Do not expose to temperatures above 50°C (122°F). Charge battery fully before storage or if stored for longer than three months.

Disposal
At the end of its life, please take care to dispose of this product responsibly. Electronic products and batteries contain materials that can be harmful to the environment. Please do not dispose to unsorted waste. Take your electronic waste to a designated collection or recycling facility to be recycled properly. Your local council authority will be able to tell you where your nearest facilities are. There may be one at your local supermarket.

Contact Us

If you're unsatisfied with your purchase, please contact us and we'll take care of you! You can contact our US based customer support team:
Website: jlabaudio.com/contact
Email: support@jlabaudio.com
Phone U.S.: +1 (405) 445-7219 (M-F 9am-5pm PT)
Phone U.K.: +44 (20) 3884 3322 (M-F 1600-0100 GMT)
Visit jlabaudio.com/warranty to initiate a return or exchange.

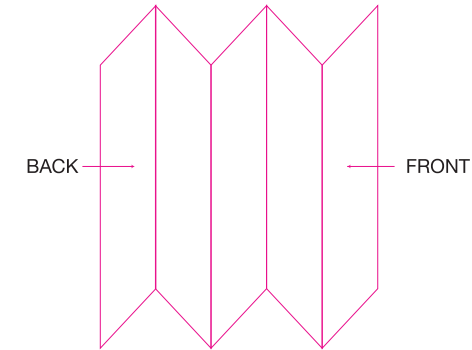
Bluetooth

QUICK START GUIDE

6+ HOURS BATTERY

JBUDSPRO WIRELESS

SIGNATURE EARBUDS
UNIVERSAL MIC with
VOLUME + TRACK CONTROL



BLUETOOTH PAIRING

- 1 Turn on Bluetooth in your device settings.

- 2 Press and hold button for 10 seconds. Release. Light will flash blue/red.

- 3 Select "JLab BT" in your device's Bluetooth settings to connect.

Light will slow blink blue when Bluetooth is paired.

INSIDE

BUTTON FUNCTIONS

VOLUME UP: Click once.
TRACK FORWARD: Click and hold 2+ seconds.

POWER ON: Click and hold 3 seconds.
POWER OFF: Click and hold 5 seconds.
ANSWER/HANG UP CALLS: Click once.
ACTIVATE SIRI (IOS) OR "OK GOOGLE" (ANDROID): Click twice.
BLUETOOTH PAIRING: See Bluetooth Pairing page.

VOLUME DOWN: Click once.
TRACK BACKWARD: Click and hold 2+ seconds.

EQUALIZER MODES

Quick press both buttons for different EQ settings (JBuds Pro will cycle 3 EQ settings)

- JLAB SIGNATURE (One Bleep)**
JLab C3™ signature sound with amplified vocals and bass
- BALANCED (Two Beeps)**
Even sound with no additional sound enhancements
- BASS BOOST (Three Beeps)**
Amplified bass and sub-bass

MLS OFFICIAL AUDIO PARTNER OF MAJOR LEAGUE SOCCER

#FINDYOURGO

QUICK START GUIDE

For full User Manual + other JLab products visit JLABAUDIO.COM

15.19 “This device complies with part 15 of the FCC Rules. Operation is subject to the following two conditions:
(1) This device may not cause harmful interference, and
(2) this device must accept any interference received, including interference that may cause undesired operation.”

	Date: 11.13.18
PROJECT: JBuds PRO Wireless QSG	
STOCK: 157g, MATTE	
INK: 4/4 CMYK/CMYK	
FLAT SIZE: 12.5" x 5.023"	
FOLDED SIZE: 2.5" x 5.023"	