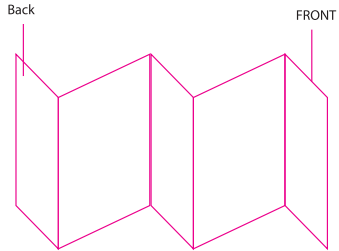


BT-857

材质：157g 双铜纸，表面过哑胶，双面印刷
Size：108 * 108mm



108mm

ACCESSORIES

- UNIVERSAL MIC VOLUME TRACK CONTROL POWER ON / OFF
- CUSHION HEADBAND WITH FAUX LEATHER
- CLOUD FOAM™ CUSHION WITH FAUX LEATHER
- ADJUSTABLE INDUSTRIAL GRADE IPOD MICRO USB CABLE

108mm

Warm-up Your Headphones
Optional: Burn-in your audio equipment with the JLab Audio App or access the burn-in method at: JLabaudio.com/burnin

JLab Audio + Burn-in Tool

3 MONTHS pandora™ FREE PREMIUM With purchase. Visit JLabaudio.com/pandoraoffer

US Compliance

FCC ID: 2AHYVSTUDIO

FCC Information
This equipment has been tested and found to comply with the limits for a Class B digital device, pursuant to part 15 of the FCC Rules. These limits are designed to provide reasonable protection against harmful interference in a residential installation. This equipment generates, uses, and can radiate radio frequency energy and, if not installed and used in accordance with the instructions, may cause harmful interference to radio communications. However, there is no guarantee that interference will not occur in a particular installation. If the equipment does cause harmful interference to radio or television reception, which can be determined by turning the equipment off and on, the user is encouraged to try to correct the interference by one or more of the following measures:

- Reorient or relocate the receiving antenna.
- Increase the separation between the equipment and receiver.
- Connect the equipment into an outlet on a circuit different from that to which the receiver is connected.
- Consult the dealer or an experienced radio/TV technician for help.

If you cannot eliminate the interference, the FCC requires that you stop using your product. Changes or modifications not approved by the party responsible for compliance could void the user's authority to operate the equipment. This device complies with part 15 of the FCC Rules. Operation is subject to the following two conditions: (1) This device may not cause harmful interference, and (2) this device must accept any interference received, including interference that may cause undesired operation.

#FINDYOURGO

OFFICIAL AUDIO PARTNER OF MAJOR LEAGUE SOCCER

QUICK START GUIDE

For full User Manual + other JLab products visit JLABAUDIO.COM

108mm

EU Compliance

CE

Radio Lab JLab Audio hereby declares that this device in compliance with the essential requirements and other relevant provisions of the RED directive.
A copy of the EU Declaration of Conformity is available at: JLabaudio.com/ce
JLab Audio
2281 Van Ness Ave, Suite 101, Colma, CA 94015, USA

The symbol above indicates that the product and/or battery should not be disposed of with household waste. When you decide to dispose of this product and/or battery, please see appropriate local environmental laws and guidelines.

Battery Caution & Disposal Information
Please take care of your battery. Do not disassemble, short, puncture, crush or bend your battery. Improper operation of the battery may produce smoke, fire or even, in rare cases, explosion. Always use caution always. Check the label on your product and always use or work with the manufacturer's instructions. Always check the label on the battery, or cover with sand or soil. Take care to avoid conditions of excessive moisture for an extended period and do not immerse. Do not expose to temperatures above 60°C (140°F). Charge battery in a battery storage unit rated for longer than three months.

Disposal
At the end of its life, please take care to dispose of the product responsibly. Electronic products and batteries contain materials that can be harmful to the environment. Please do not dispose to unlicensed waste. Use your electronic waste to a designated location or recycling facility to be recycled properly. Your local community authority will help you when you need to dispose. There may be one or more local options.

Contact Us
If you're unsatisfied with your purchase, please contact us and we'll take care of you. You can contact our US based customer support team:
Website: JLabaudio.com/contact
Email: support@JLabaudio.com
Phone US: +1 (408) 445-2219 (M-F 9am-5pm PT)
Phone UK: +44 (0)20 3884 3322 (M-F 1000-0100 GMT)
Visit JLabaudio.com/warranty to initiate a return of exchange.

108mm

STUDIO WIRELESS ON-EAR HEADPHONES

with UNIVERSAL MIC + VOLUME TRACK CONTROL

30+ HOURS BATTERY*

108mm

FIRST TIME SETUP: BLUETOOTH PAIRING

- Turn on Bluetooth in your device settings.
- Press and hold button for 10 seconds. Indirect lights will flash blue/red.
- Select "JLab Studio" in your device settings to connect.

PAIRING NEW/ADDITIONAL DEVICES:
Turn OFF Bluetooth on your previously paired device and turn ON Bluetooth on new device. Repeat FIRST TIME SETUP process for new devices.

BUTTON FUNCTIONS

- VOLUME UP: Click once.
- TRACK FORWARD: Click and hold 2+ seconds.
- VOLUME DOWN: Click once.
- TRACK BACKWARD: Click and hold 2+ seconds.
- POWER ON/OFF: Click and hold 2+ seconds.
- PLAY/PAUSE/ANSWER/HANG UP CALLS: Click once.
- REJECT/INCOMING CALL: Click and hold 1 second.
- ACTIVATE Siri (iOS) OR "OK GOOGLE" (ANDROID): Click twice.
- BLUETOOTH PAIRING: See FIRST TIME SETUP.

CHANGE EQ: Press both buttons simultaneously. Studio will cycle 3 EQ settings.

- SIGNATURE (One Beep):** JLab EQ designed to be used with amplified vocals and bass.
- BALANCED (Two Beeps):** Even sound with no additional sound enhancements.
- BASS BOOST (Three Beeps):** Amplified bass and sub-bass.

CHARGING

Connect to a computer or USB to output device.

CHARGING (Red light)

FULLY CHARGED (Blue light)

Note: Studio Bluetooth can still be used while charging. Power on and connect to device after charging occurs.

NOTE: This equipment has been tested and found to comply with the limits for a Class B digital device, pursuant to part 15 of the FCC Rules. These limits are designed to provide reasonable protection against harmful interference in a residential installation. This equipment generates, uses, and can radiate radio frequency energy and, if not installed and used in accordance with the instructions, may cause harmful interference to radio communications. However, there is no guarantee that interference will not occur in a particular installation. If the equipment does cause harmful interference to radio or television reception, which can be determined by turning the equipment off and on, the user is encouraged to try to correct the interference by one or more of the following measures:

- Reorient or relocate the receiving antenna.
- Increase the separation between the equipment and receiver.
- Connect the equipment into an outlet on a circuit different from that to which the receiver is connected.
- Consult the dealer or an experienced radio/TV technician for help.

Changes or modifications not expressly approved by the party responsible for compliance could void the user's authority to operate the equipment.

This device complies with part 15 of the FCC Rules. Operation is subject to the following two conditions:
(1) This device may not cause harmful interference, and
(2) this device must accept any interference received, including interference that may cause undesired operation.

PROJECT: JLab Studio BT OSG

Date: 02.07.19

STOCK: 220g, MATTE

INK: 4/4 CMYK / CMYK

FLAT SIZE: 17" x 4.25"

FOLDED SIZE: 4.25" x 4.25"