

**ACCESSORIES**

EPIC BLUETOOTH

6 GEL CUSHION TIPS

CABLE MANAGEMENT CLIPS

MOBILE CASE + WAIST CLIP

**USB CHARGING CABLE**

**CHARGING**

- 1 Locate the Micro USB door and plug in the cable and connect the USB to a computer or AC power source.
- 2 Red light indicates charging and will turn off once battery is fully charged. Full charge is approximately 4 hrs.

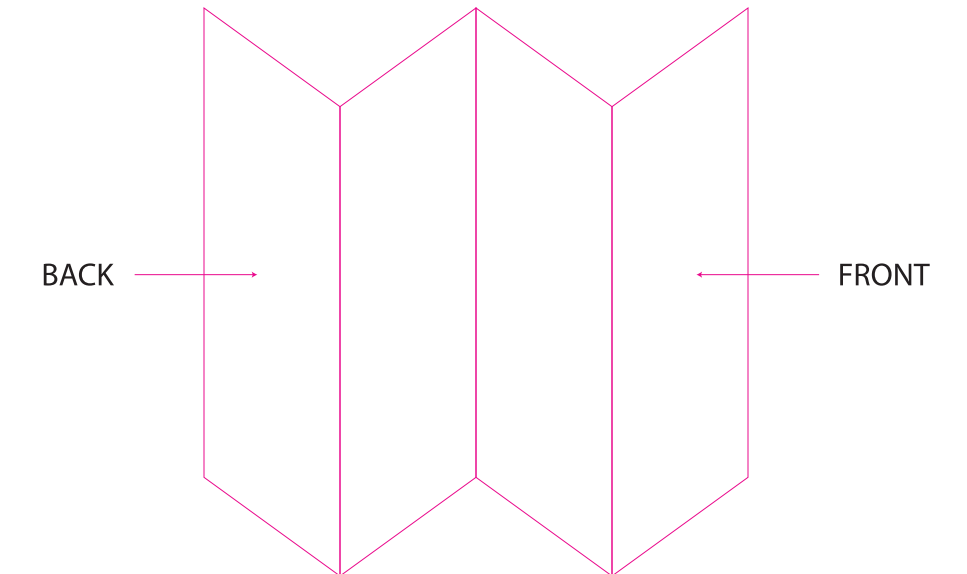
**BLUETOOTH PAIRING**

- 1 When power is off, press and hold for 10+ seconds. Voice prompt "Pairing" followed by blue and red blinking lights indicate Epic is in pairing mode.
- 2 Look for Epic BT in your device settings and connect. If a password is required type in "0000". Voice prompt "Your headset is connected" followed by slow blue blinking light indicates connection.

**NOTE:** The Epic will automatically pair with the last device connected to when turned on.

**EPIC**  
Bluetooth  
PREMIUM WIRELESS EARBUDS

URUB® QUICK START GUIDE



Ink: 4/4  
 Stock: 220 gsm Matte  
 TRIM: 10" X 5.125"  
 FOLDED: 2.5" X 5.125"

**BUTTON FUNCTIONS**

- VOLUME UP:** Click once.
- TRACK FORWARD:** Click and hold 2+ seconds.
- VOLUME DOWN:** Click once.
- TRACK BACKWARD:** Click and hold 2+ seconds.
- POWER ON:** Click and hold 3 second.
- POWER OFF:** Click and hold 5 seconds.
- ANSWER/HANG UP CALLS:** Click once.
- BLUETOOTH PAIRING:** See Bluetooth Pairing page

**CABLE MANAGEMENT CLIPS**

- 1 Create a desired length by looping the cable.
- 2 Secure a cable clip on one end of the loop by pushing in from the top and bottom.
- 3 Secure the second cable clip on the other end of the looped cable.
- 4 Cable clips should be secured to both ends of cable.

**FITTING**

- 1 Place the earbud housing to your ear while wrapping the memory wire behind the ear.
- 2 Rotate earbud in ear canal and adjust memory wire to your desired fit.

This device complies with Industry Canada licence-exempt RSS standard(s). Operation is subject to the following two conditions: (1) this device may not cause interference, and (2) this device must accept any interference, including interference that may cause undesired operation of the device.

Le présent appareil est conforme aux CNR d'Industrie Canada applicables aux appareils radio exempts de licence. L'exploitation est autorisée aux deux conditions suivantes : (1) l'appareil ne doit pas produire de brouillage, et (2) l'utilisateur de l'appareil doit accepter tout brouillage radioélectrique subi, même si le brouillage est susceptible d'en compromettre le fonctionnement.

NOTE: This equipment has been tested and found to comply with the limits for a Class B digital device, pursuant to part 15 of the FCC Rules. These limits are designed to provide reasonable protection against harmful interference in a residential installation. This equipment generates uses and can radiate radio frequency energy and, if not installed and used in accordance with the instructions, may cause harmful interference to radio communications. However, there is no guarantee that interference will not occur in a particular installation. If this equipment does cause harmful interference to radio or television reception, which can be determined by turning the equipment off and on, the user is encouraged to try to correct the interference by one or more of the following measures:

- Reorient or relocate the receiving antenna.
- Increase the separation between the equipment and receiver.
- Connect the equipment into an outlet on a circuit different from that to which the receiver is connected.
- Consult the dealer or an experienced radio/TV technician for help

Changes or modifications not expressly approved by the party responsible for compliance could void the user's authority to operate the equipment. This device complies with Part 15 of the FCC Rules. Operation is subject to the following two conditions:

- (1) this device may not cause harmful interference, and
- (2) this device must accept any interference received, including interference that may cause undesired operation.

RF Exposure Information:

This product is compliance to FCC RF Exposure requirements and refers to FCC website <https://apps.fcc.gov/oetcf/eas/reports/GenericSearch.cfm> search for FCC ID: 2AHYVEPICBT.