

## WITH LOVE FROM THE LAB

We have lots of different ways to show we care.

### GET STARTED + FREE GIFT

Product updates | How-to tips | FAQs & more  
Go to [jlab.com/register](http://jlab.com/register) or [intl.jlab.com/register](http://intl.jlab.com/register)  
to unlock your customer benefits including a free gift.

Gift for US only. No APO/FPO/DPO addresses.

### WE GOT YOUR BACK

We're obsessed with creating the best possible experience around owning our products. If you have any questions, concerns, or feedback, we're here for you. Contact a real human on our U.S.-based customer support team:

Website: [jlab.com/contact](http://jlab.com/contact)

Email: [support@jlab.com](mailto:support@jlab.com)

Phone U.S.: +1 (405) 445-7219

Phone U.K./EU: +44 (20) 8142 9361 (Check hours [jlab.com/hours](http://jlab.com/hours))

Visit [jlab.com/warranty](http://jlab.com/warranty) to initiate a return or exchange.

For international, visit [intl.jlab.com/warranty](http://intl.jlab.com/warranty) to initiate a return or exchange.

### LATEST AND GREATEST

Our team is constantly improving your product experience. This model may have new features or controls which are not detailed in this guide.



For the latest version of the manual, scan the QR code.

For support visit:  
[HELP.JLAB.COM](http://HELP.JLAB.COM)  
or [INTL.JLAB.COM/MANUALS](http://INTL.JLAB.COM/MANUALS)

FCC ID: 2AHYV-EOPSP  
IC: 21316-EOPSP

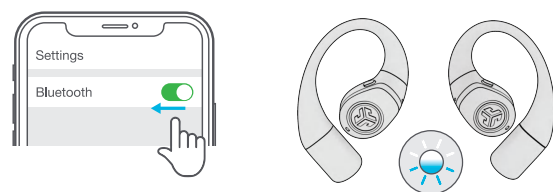
Distributed in U.K. by:  
JLab o/o Tigo Limited  
21 Headlands Business Park, Ringwood,  
Hampshire BH24 3PS United Kingdom

EU Importer:  
JLab  
5927 Landaui Ct.  
Cost Mesa, CA 92008, USA



## MULTIPOINT

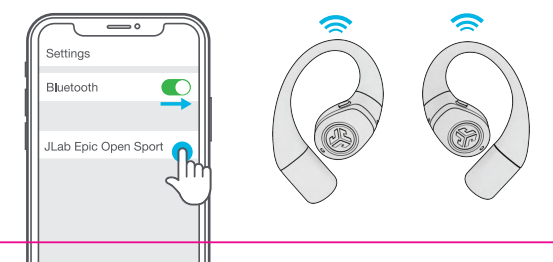
- 1 Once **FIRST** device is connected, turn off Bluetooth in device settings. Earbuds will auto enter Bluetooth Pairing.



- 2 Enter your **SECOND** device Bluetooth settings and connect.



- 3 Enter your **FIRST** device Bluetooth settings. Turn on Bluetooth and connect to Epic Open Sport.



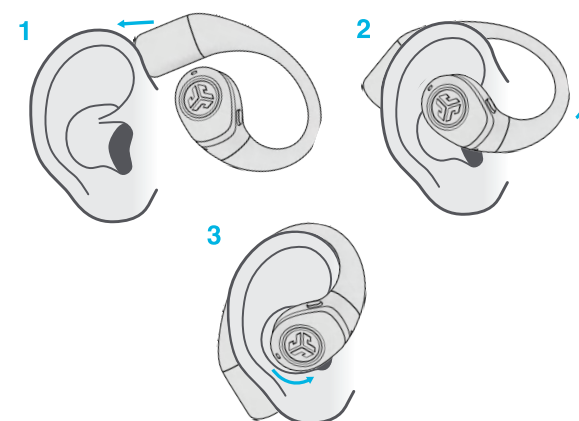
## THE RIGHT SOUND FOR EVERY MOMENT

### EQUALIZER MODES

- "JLab SIGNATURE"  
JLab C3™ signature sound with amplified vocals and bass
- "BALANCED"  
Even sound with no additional sound enhancements
- "CUSTOM"  
Personalize your EQ through the JLab App.

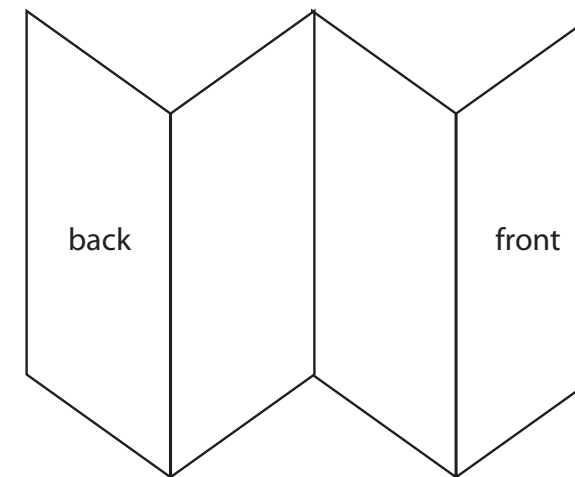
### FIND YOUR FIT

Try all ear tips for best fit and proper seal.



**EPIC OPEN SPORT**  
AIR CONDUCTION WIRELESS EARBUDS

**QUICK START GUIDE**



## WELCOME TO THE LAB

The Lab is where you'll find real people, developing really great products, in a real place called San Diego.

### PERSONAL TECH DONE BETTER



#### Designed for You

We actually listen to what you want and we're always looking for ways to make everything easier and better for you.



#### Lab Quality Sound

Choose from different settings and customize your sound style to match exactly what you're doing.



#### Surprisingly Awesome Value

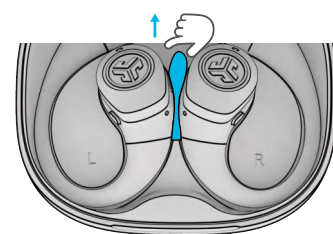
We always pack in the most functionality and fun into every product at a truly accessible price.

#yourkindoftech

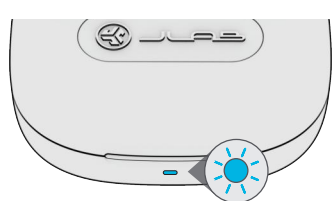
Tech-iff about you.

## PAIR UP

- 1 Remove pull tab and close case door.



- 2 Blue light on case indicates charge. Remove earbuds.

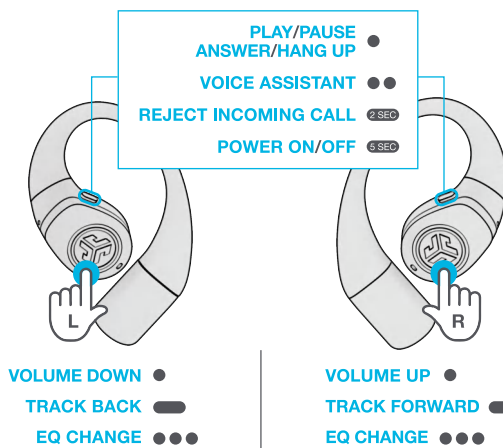


- 3 One earbud blinks blue/white = Ready to Pair. Connect to JLab Epic Open Sport in your device settings.



## GO AHEAD, PRESS THE BUTTON

1x ● 2x ●● 3x ●●● Press Hold ●●●



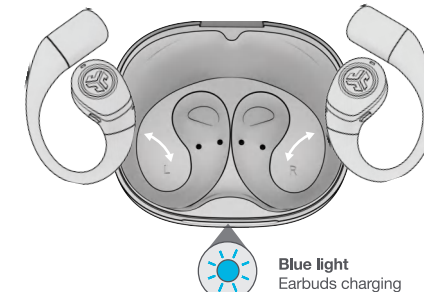
## DOWNLOAD THE APP

Customize Epic Open Sport features and update the latest software. Download the **JLab App** in Apple/Google Play Store.

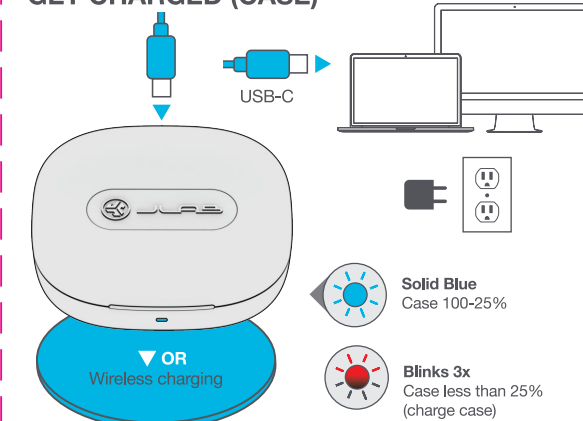


## GET CHARGED (EARBUDS)

Earbuds auto power off and start charging when placed in case. Earbuds will auto-connect when removed.



## GET CHARGED (CASE)



	Date: 01.13.25
PROJECT: Epic Open Sport QSG	
STOCK: 157g, MATTE	
INK: 4/4 CMYK/CMYK	
FLAT SIZE: 340mm x 120mm	
FOLDED SIZE: 85mm x 120mm	