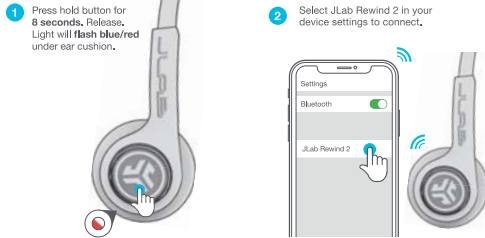


杰里电商版

128g 双铜板纸,表面过哑油, 正反印刷

Size:304.8*171.5mm (对折152.4x171.5)

PAIR UP



GO AHEAD, PRESS THE BUTTON

1x ● 2x ●● 3x ●●● Press Hold ●●●

PLAY/PAUSE ●
TRACK FORWARD 15S ●
SRC/OK GOOGLE ●●
CHANGE EQ ●●●
ANSWER/HANG UP ●
POWER 15S ●



DOWNLOAD THE MOBILE APP

Customize Rewind 2 features and update the latest software.

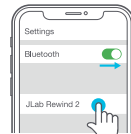
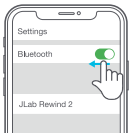


SCAN ME



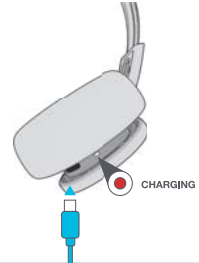
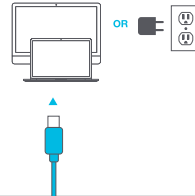
BLUETOOTH MULTIPOINT (Connect 2 devices simultaneously)

- Once **FIRST** device is connected, turn off Bluetooth in device settings. Rewind 2 will auto enter Bluetooth Pairing.
- Enter your **SECOND** device Bluetooth settings and connect to Rewind 2.
- Enter your **FIRST** device settings. Turn on Bluetooth and reconnect to Rewind 2.



GET CHARGED

Connect the USB-C cable to a computer or USB 5V output device.



SHARE MODE (Share between two Rewind 2 headphones)

- Connect **FIRST** headphone to device.
- SECOND** headphone should be powered off. Press hold until flashing blue/red.
- Then 5x Press and blinks blue.
- FIRST** headphone 5x Press to share.



WELCOME TO THE LAB

The Lab is where you'll find real people, developing really great products, in a real place called San Diego.

PERSONAL TECH DONE BETTER



Designed for You
We actually listen to what you want and we're always looking for ways to make everything easier and better for you.



Lab Quality Sound
Choose from different settings and customize your sound style to match exactly what you're doing.



Surprisingly Awesome Value
We always pack in the most functionality and fun into every product at a truly accessible price.

#yourkindoftech

hashtag

WITH LOVE FROM THE LAB

We have lots of different ways to show we care.

GET STARTED + FREE GIFT

Product updates | How-to tips | FAQs & more

Go to jlab.com/register to unlock your customer benefits including a free gift.

Gift for US only. No APO/FPO/DPO addresses.

WE GOT YOUR BACK

We're obsessed with creating the best possible experience around owning our products. If you have any questions, concerns, or feedback, we're here for you. Contact a real human on our U.S.-based customer support team.

Website: jlab.com/contact

Email: support@jlab.com

Phone U.S.: +1 (405) 445-7219

Phone U.K./EU: +44 (20) 8142 9361

(Check hours jlab.com/hours)

Visit jlab.com/warranty to initiate a return or exchange.

LATEST AND GREATEST

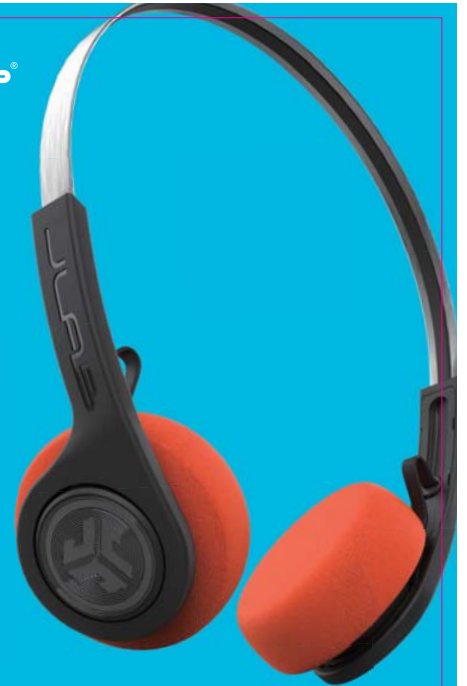
Our team is constantly improving your product experience. This model may have new features or controls which are not detailed in this guide.

For the latest version of the manual, scan the QR code below.



FCC ID: 2AHHV-REWIND2
IC ID: 21316-REWIND2

Complies with IMDA Standards
DA00006A



REWIND²
WIRELESS
RETRO HEADPHONES

QUICK START GUIDE