



FREE GIFT

when you register this product
jlab.com/register
Product updates | How-to tips
FAQs & more

Gift for US only. No APO/FPO/DPO addresses.

3 MONTHS FREE
TIDAL

Instructional videos at:
JLAB.COM/MANUALS

FCC ID: 2AHYV-JMOUSE
FCC ID: 2AHYV-JEDGL1



size: 108*166MM

● 306C ● Cool Gray 11C

JBUDSMOUSE

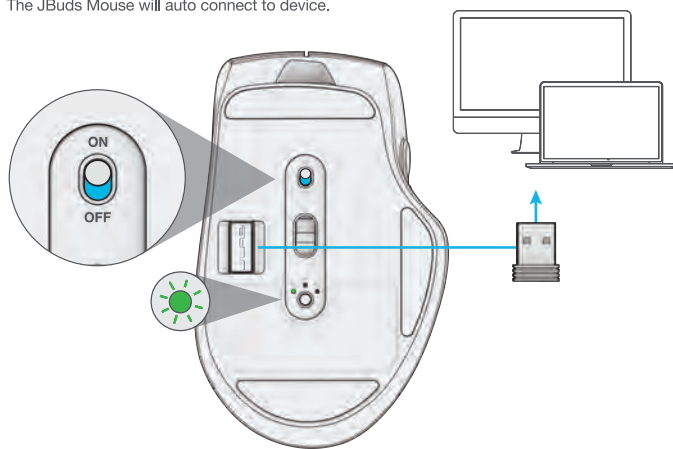
BLUETOOTH MOUSE

QUICK START GUIDE

SETUP

1 2.4 Connect

Plug in the USB dongle to computer and turn on.
The JBuds Mouse will auto connect to device.



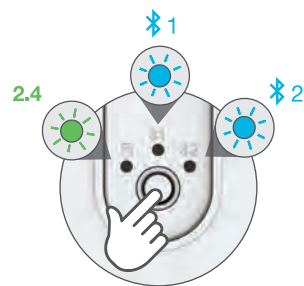
2 Bluetooth Connect

Quick Press to toggle to 1 or 2
Then Press Hold to enter Pairing Mode (Flashing light)
Select "JLab JBuds Mouse" in device settings

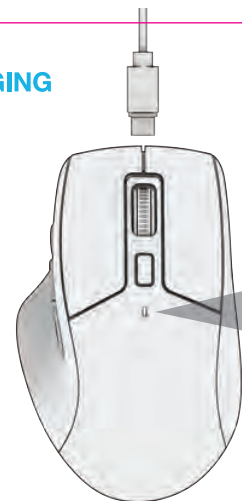
QUICK PRESS
TO TOGGLE
PRESS HOLD TO PAIR

PAIRING
MODE:
Flashing

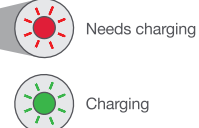
PAIRED:
Solid



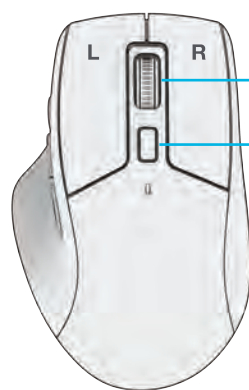
CHARGING



Connect the JBuds Mouse into computer
or USB 5V 1A (or less) to charge.

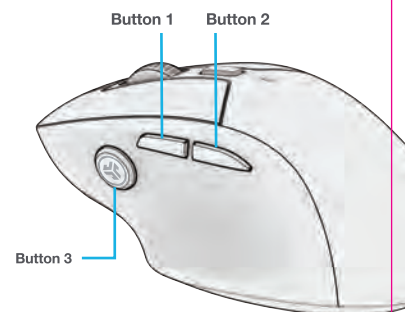


INTERFACE



Scroll +
Middle Button

DPI Button:
Toggle mouse
sensitivity
(1200,1600,
2000,2400)



Button 3

Download the JLab App (for Mac and PC)
to fully customize the JBuds Mouse at:
JLAB.COM/SOFTWARE



(2.4 dongle needs to be plugged in for customizing software)

180mm

60mm

Caution FCC and IC Statement for Users (US and Canada Only)

This device complies with part 15 of the of the FCC rules. Operation is subject to the following two conditions: (1) This device may not cause harmful interference, and (2) this device must accept any interference received, including interference that may cause undesired operation.

IC Statement: CAN ICES-3(B)/NMB-3(B)

This device complies with Industry Canada license-exempt RSS standard(s). Operation is subject to the following two conditions: (1) this device may not cause harmful interference, and (2) this device must accept any interference received, including interference that may cause undesired operation.



The symbol above indicates that this product and/or battery should not be disposed of with household waste. When you decide to dispose of this product and/or its battery, do so in accordance with local environmental laws and guidelines.



Federal Communication Commission Interference Statement

This equipment has been tested and found to comply with the limits for a Class B digital device, pursuant to part 15 of the FCC Rules. These limits are designed to provide reasonable protection against harmful interference in a residential installation. This equipment generates, uses and can radiate radio frequency energy and, if not installed and used in accordance with the instructions, may cause harmful interference to radio communications.

However, there is no guarantee that interference will not occur in a particular installation. If this equipment does cause harmful interference to radio or television reception, which can be determined by turning the equipment off and on, the user is encouraged to try to correct the interference by one or more of the following measures:

- Reorient or relocate the receiving antenna.
- Increase the separation between the equipment and receiver.
- Connect the equipment into an outlet on a circuit different from that to which the receiver is connected.
- Consult the dealer or an experienced radio/TV technician for help.
- If you cannot eliminate the interference, the FCC requires that you stop using your product. Changes or Modifications not expressly by the party responsible for compliance could void the user's authority to operate the equipment.

FCC/IC Radiation Exposure Statement

This equipment complies with FCC/IC RSS-102 radiation exposure limits set forth for an uncontrolled environment.

For Products that Include Batteries.

Battery Caution & Disposal Information

Please take care of your battery. Do not; disassemble, burn, puncture, crush or bend your battery. Improper operation of the battery may produce smoke. In such an event, ventilate the area. Extinguish any flames with carbon dioxide, dry-powder fire extinguisher, or cover with sand or mud. Take care to avoid conditions of excessive moisture for prolonged periods and do not immerse. Do not expose to temperatures above 50 C/122 F. Charge battery fully before storage or if stored for longer than three months. The operating temperature of this product is 0 C (32 F) to 40 C (104 F). Ambient temperature should not exceed 45 C (113 F).

Disposal

At the end of its life, please take care to dispose of this product responsibly. Electronic products and batteries contain materials that can be harmful to the environment. Please do not dispose to unsorted waste. Take your electronic waste to a designated collection or recycling facility to be recycled properly. Your local council authority will be able to tell you where your nearest facilities are. There may be one at your local supermarket.

JLab can help you recycle. Learn more intl.jlab.com/recycle

Folded

