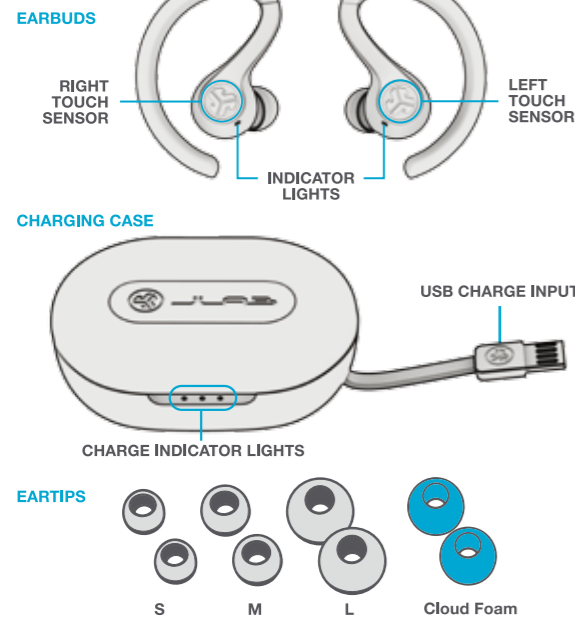


113mm±2mm

IN THE BOX



WARNING

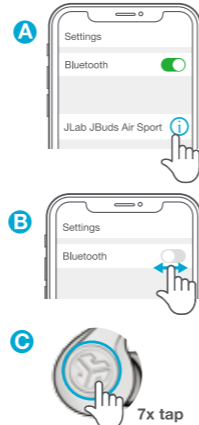
Fully dry off earbuds before placing in the charging case. If the earbuds are damp or wet, this will cause damage to the charging case. The warranty will be voided if the charging case shows damage by water/sweat.

TROUBLESHOOTING: No audio in left earbud or earbuds disconnected from each other (Manual Reset)

- 1 Enter your Bluetooth device settings and forget the JBuds Air Sport. Fig A
- 2 Take out ONE earbud from the charging case and quickly tap the touch sensor 7x times. Light turns Blue then turns OFF. Once OFF, put back in the charging case. Fig C
- 3 Repeat with other earbud. Take out and quickly tap the touch sensor 7x times. Light turns Blue then turns OFF. Then put back in the charging case. Fig C
- 4 Take both earbuds out of the charging case. Wait for Left earbud to turn solid white and Right to blink blue/white. You are now ready to pair to your Bluetooth device.

Bluetooth device does not connect/reconnect

- 1 Enter your Bluetooth device settings and forget the JBuds Air Sport. Fig A
- 2 Turn OFF then ON Bluetooth. Fig B
- 3 Take the earbuds out of the case. Wait for Left to turn solid white and Right blinking blue/white.
- 4 Select "JLab JBuds Air Sport" in device settings to reconnect.



Instructional videos at: JLABAUDIO.COM

3 MONTHS FREE TIDAL
With purchase. Visit jlabaudio.com/tidal

Warm-up Your Headphones
Optional: Burn-in your audio equipment with the JLab Audio App or access the burn-in method at: jlabaudio.com/burnin



JLab Audio + Burn-in Tool

US Compliance

FCC Information

This equipment has been tested and found to comply with the limits for a Class B digital device, pursuant to Part 15 of the FCC Rules. These limits are designed to provide reasonable protection against harmful interference in a residential installation. This equipment generates, uses and can radiate radio frequency energy and, if not installed and used in accordance with the instructions, may cause harmful interference to radio communications. However, there is no guarantee that interference will not occur in a particular installation. If this equipment does cause harmful interference to radio or television reception, which can be determined by turning the equipment off and on, the user is encouraged to try to correct the interference by one or more of the following measures:

- Reorient or relocate the receiving antenna.
- Increase the separation between the equipment and receiver.
- Connect the equipment into an outlet on a circuit different from that to which the receiver is connected.
- Consult the dealer or an experienced radio/TV technician for help.

If you cannot eliminate the interference, the FCC requires that you stop using your product. Changes or modifications not expressly by the party responsible for compliance could void the user's authority to operate the equipment.

This device complies with Part 15 of the FCC Rules. Operation is subject to the following two conditions: (1) this device may not cause harmful interference, and (2) this device must accept any interference received, including interference that may cause undesired operation.

The device has been evaluated to meet general RF exposure statement. The device can be used in portable exposure condition without restriction.

EU Compliance



PEAG LLC dba JLab Audio hereby declares that this device is in compliance with the essential requirements and other relevant provisions of the RED directive. A copy of the EU Declaration of Conformity is available at jlabaudio.com/compliance

JLab Audio
2281 Las Palmas Drive, Suite 101, Carlsbad, CA 92011, USA



The symbol above indicates that this product and/or battery should not be disposed of with household waste. When you decide to dispose of this product and/or its battery, do so in accordance with local environmental laws and guidelines.

Battery Caution & Disposal Information

Please take care of your battery. Do not; disassemble; burn; puncture; crush or bend your battery. Improper operation of the battery may produce smoke. In such an event, ventilate the area. Extinguish any flames with carbon dioxide, dry-powder fire extinguisher, or cover with sand or mud. Take care to avoid conditions of excessive moisture for prolonged periods and do not immerse. Do not expose to temperatures above 50°C/122°F. Charge battery fully before storage or if stored for longer than three months.

Disposal

At the end of its life, please take care to dispose of this product responsibly. Electronic products and batteries contain materials that can be harmful to the environment. Please do not dispose to unsorted waste. Take your electronic waste to a designated collection or recycling facility to be recycled properly. Your local council authority will be able to tell you where your nearest facilities are. There may be one at your local supermarket.

Contact Us

If you're unsatisfied with your purchase, please contact us and we'll take care of you! You can contact our US based customer support team:

Website: jlabaudio.com/contact

Email: support@jlabaudio.com

Phone U.S.: +1 (405) 445-7219 (M-F 8am-5pm PT)

Phone U.K.: +44 (20) 3884 3322 (M-F 1600-0100 GMT)

Visit jlabaudio.com/warranty to initiate a return or exchange.



FIRST TIME SETUP

- 1 **AUTO-CONNECTING EARBUDS**
A. Take earbuds out of the charging case and remove stickers.
B. Press and hold both touch sensors 3+ seconds to turn ON. Left earbud turns solid white and Right earbud blinks blue/white indicating ready to pair to your device.
- 2 **CONNECTING BLUETOOTH**
Select "JLab JBuds Air Sport" in your device settings. Voice prompt "Bluetooth connected" followed by solid white lights will indicate you are connected.

ADDING NEW/ADDITIONAL BLUETOOTH DEVICES: Turn OFF Bluetooth from any previously connected device. Turn ON Bluetooth from new device. Take earbuds out of the case. Earbuds will automatically enter Bluetooth Pairing. Select "JLab JBuds Air Sport" in new device settings to connect.

BUTTON FUNCTIONS

- VOLUME DOWN:** Single tap
- SIRI (iOS) or "OK GOOGLE" (ANDROID):** Double tap
- TRACK BACK:** Press & hold 1+ sec
- EQ CHANGE:** Triple tap (Cycles through 3 EQ settings)
- POWER ON:** Press & hold 3+ sec
- VOLUME UP:** Single tap
- PLAY / PAUSE:** Double tap
- TRACK FORWARD:** Press & hold 1+ sec
- ANSWER:** Single tap
- HANGUP:** Double tap
- REJECT INCOMING CALLS:** Press & hold 1+ sec
- BE AWARE MODE ON / OFF:** Triple tap
- POWER ON:** Press & hold 3+ sec

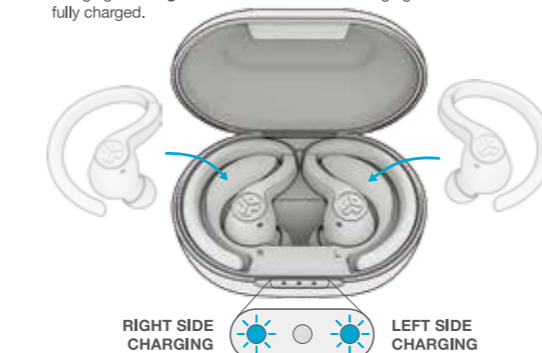
TURN OFF EARBUDS WITHOUT CHARGING CASE: Enter your Bluetooth device settings and disconnect the JBuds Air Sport. Earbuds will power OFF after 3 minutes.

EQ SETTINGS: Voice prompts will indicate EQ settings.

- JLab SIGNATURE:** JLab C3™ signature sound with amplified vocals and bass
- BALANCED:** Even sound with no additional enhancements
- BASS BOOST:** Amplified bass and sub-bass

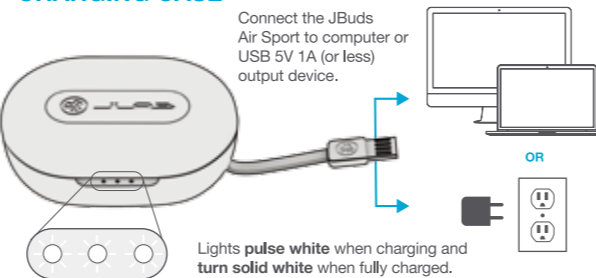
CHARGING EARBUDS

- 1 Placing the earbuds in the charging case will power OFF earbuds and start charging. Blue lights indicate earbuds are charging and will turn OFF when fully charged.



- 2 When earbuds are taken out of the case, they will auto power ON and reconnect to your device.

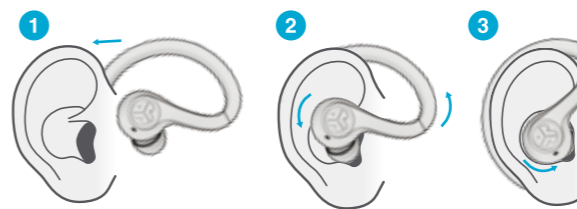
CHARGING CASE



VOICE PROMPTS

- "Hello": Power ON
- "Earbuds joined": Earbuds paired to each other
- "Ready to Pair": JBuds Air Sport are ready to pair to Bluetooth device
- "Bluetooth Connected": Earbud is connected to device
- "Battery Full": 100-80%
- "Battery Medium": 80-20%
- "Low Battery": Less than 20%
- When power decreases to 10%, "Low Battery" will play
- "Goodbye": Power OFF

FITTING



QUICK TIPS

- Fully dry off the earbuds before putting in the charging case.
- The Bluetooth connection is established from the right earbud. For the most stable connection, keep the device near right hand side or in right pocket.
- If you prefer to wear only one earbud, you must wear the right earbud as this is the main earbud connected to Bluetooth.
- Choosing the correct ear tip makes a significant improvement in audio quality due to the proper seal for the driver. Test all ear tips for best results.
- Only ONE Bluetooth device can be connected at a time. Turn off Bluetooth on unwanted devices and turn on Bluetooth on chosen device to connect.

For full User Manual and troubleshooting, please visit JLABAUDIO.COM

420mm±2mm