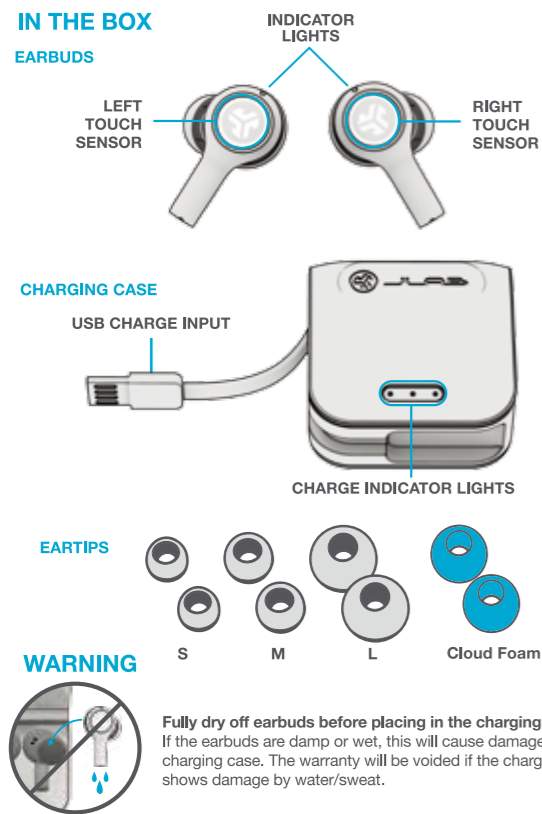


113mm±2mm

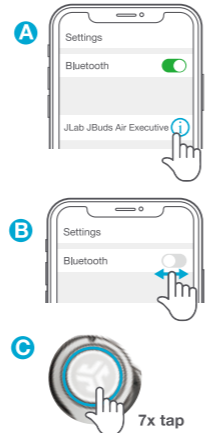


TROUBLESHOOTING: No audio in left earbud or earbuds disconnected from each other (Manual Reset)

- 1 Enter your Bluetooth device settings and forget the JBuds Air Executive. Fig A
- 2 Take out ONE earbud from the charging case and quickly tap the touch sensor 7x times. Light turns Blue then turns OFF. Once OFF, put back in the charging case. Fig C
- 3 Repeat with other earbud. Take out and quickly tap the touch sensor 7x times. Light turns Blue then turns OFF. Once OFF, put back in the charging case. Fig C
- 4 Take both earbuds out of the charging case. Wait for Left earbud to turn solid white and Right to blink blue/white. You are now ready to pair to your Bluetooth device.

Bluetooth device does not connect/reconnect

- 1 Enter your Bluetooth device settings and forget the JBuds Air Executive. Fig A
- 2 Turn OFF then ON Bluetooth. Fig B
- 3 Take the earbuds out of the case. Wait for Left to turn solid white and Right blinking blue/white.
- 4 Select "JLab JBuds Air Executive" in device settings to reconnect.



Instructional videos at: JLABAUDIO.COM

3 MONTHS FREE TIDAL
With purchase. Visit jlabaudio.com/tidal

Warm-up Your Headphones
Optional: Burn-in your audio equipment with the JLab Audio App or access the burn-in method at: jlabaudio.com/burnin



US Compliance

FCC Information FCC ID: 2A4HV-JAIREXEC
This equipment has been tested and found to comply with the limits for a Class B digital device, pursuant to Part 15 of the FCC Rules. These limits are designed to provide reasonable protection against harmful interference in a residential installation. This equipment generates, uses and can radiate radio frequency energy and, if not installed and used in accordance with the instructions, may cause harmful interference to radio communications. However, there is no guarantee that interference will not occur in a particular installation. If this equipment does cause harmful interference to radio or television reception, which can be determined by turning the equipment off and on, the user is encouraged to try to correct the interference by one or more of the following measures:
• Reorient or relocate the receiving antenna.
• Increase the separation between the equipment and receiver.
• Connect the equipment into an outlet on a circuit different from that to which the receiver is connected.
• Consult the dealer or an experienced radio/TV technician for help.
If you cannot eliminate the interference, the FCC requires that you stop using your product. Changes or modifications not expressly by the party responsible for compliance could void the user's authority to operate the equipment.
This device complies with Part 15 of the FCC Rules. Operation is subject to the following two conditions: (1) this device may not cause harmful interference, and (2) this device must accept any interference received, including interference that may cause undesired operation.
The device has been evaluated to meet general RF exposure statement.
The device can be used in portable exposure condition without restriction.

EU Compliance

CE
PEAG LLC dba JLab Audio hereby declares that this device is in compliance with the essential requirements and other relevant provisions of the RED directive.
A copy of the EU Declaration of Conformity is available at jlabaudio.com/compliance
JLab Audio
2281 Las Palmas Drive, Suite 101, Carlsbad, CA 92011, USA
The symbol above indicates that this product and/or battery should not be disposed of with household waste. When you decide to dispose of this product and/or its battery, do so in accordance with local environmental laws and guidelines.

Battery Caution & Disposal Information
Please take care of your battery. Do not: disassemble, burn, puncture, crush or bend your battery. Improper operation of the battery may produce smoke. In such an event, ventilate the area. Extinguish any flames with carbon dioxide, dry-powder fire extinguisher, or cover with sand or mud. Take care to avoid conditions of excessive moisture for prolonged periods and do not immerse. Do not expose to temperatures above 50°C/122°F. Charge battery fully before storage or if stored for longer than three months.
Disposal
At the end of its life, please take care to dispose of this product responsibly. Electronic products and batteries contain materials that can be harmful to the environment. Please do not dispose to unsorted waste. Take your electronic waste to a designated collection or recycling facility to be recycled properly. Your local council authority will be able to tell you where your nearest facilities are. There may be one at your local supermarket.

Contact Us

If you're unsatisfied with your purchase, please contact us and we'll take care of you!
You can contact our US based customer support team:
Website: jlabaudio.com/contact
Email: support@jlabaudio.com
Phone U.S.: +1 (405) 445-7219 (M-F 8am-5pm PT)
Phone U.K.: +44 (20) 3884 3322 (M-F 1600-0100 GMT)
Visit jlabaudio.com/warranty to initiate a return or exchange.

30+ HOURS of PLAYTIME

JBUDS AIREXECUTIVE
TRUE WIRELESS

QUICK START GUIDE

FIRST TIME SETUP

1 AUTO-CONNECTING EARBUDS
A. Take earbuds out of the charging case and remove stickers.
B. Press and hold both touch sensors 3+ seconds to turn ON. Left earbud turns solid white and Right earbud blinks blue/white indicating ready to pair to your device.

2 CONNECTING BLUETOOTH
Select "JLab JBuds Air Executive" in your device settings. Voice prompt "Bluetooth connected" followed by solid white lights will indicate you are connected.

ADDING NEW/ADDITIONAL BLUETOOTH DEVICES:
Turn OFF Bluetooth from any previously connected device. Turn ON Bluetooth from new device. Take earbuds out of the case. Earbuds will automatically enter Bluetooth Pairing. Select "JLab JBuds Air Executive" in device settings to connect.

BUTTON FUNCTIONS

LEFT TOUCH SENSOR **RIGHT TOUCH SENSOR**

VOLUME DOWN: Single tap
SIRI (iOS) or "OK GOOGLE" (ANDROID): Double tap
TRACK BACK: Press & hold 1+ sec
EQ CHANGE: Triple tap (Cycles through 3 EQ settings)
POWER ON: Press & hold 3+ sec

VOLUME UP: Single tap
PLAY / PAUSE: Double tap
TRACK FORWARD: Press & hold 1+ sec
ANSWER: Single tap
HANGUP: Double tap
REJECT INCOMING CALLS: Press & hold 1+ sec
BE AWARE MODE ON / OFF: Triple tap
POWER ON: Press & hold 3+ sec

TURN OFF EARBUDS WITHOUT CHARGING CASE:
Enter your Bluetooth device settings and disconnect the JBuds Air Executive. Earbuds will power OFF after 3 minutes.

EQ SETTINGS: Voice prompts will indicate EQ settings.

- JLab SIGNATURE:** JLab C3™ signature sound with amplified vocals and bass
- BALANCED:** Even sound with no additional enhancements
- BASS BOOST:** Amplified bass and sub-bass

CHARGING EARBUDS

1 Placing the earbuds in the charging case will power OFF earbuds and start charging. Blue lights indicate earbuds are charging and will turn off when fully charged.

2 When earbuds are taken out of the case, they will auto power ON and reconnect to your device.

CHARGING CASE
Connect the JBuds Air Executive to computer or USB 5V 1A (or less) output device.
OR
Lights pulse white when charging and turn solid white when fully charged.

VOICE PROMPTS

"Hello": Power ON
"Earbuds joined": Earbuds paired to each other
"Ready to Pair": JBuds Air Executive are ready to pair to Bluetooth device
"Bluetooth Connected": Earbud is connected to device
"Battery Full": 100-80%
"Battery Medium": 80-20%
"Low Battery": Less than 20%
When power decreases to 10%, "Low Battery" will play
"Goodbye": Power OFF

FITTING
Try the optional Cush Fins and all ear tips for best fit and proper seal.
Place the earbud in the ear canal and slightly rotate to adjust for best fit.

QUICK TIPS

- Fully dry off the earbuds before putting in the charging case to avoid any damage to the case. The earbuds are sweat/water resistant but the case is not.
- The Bluetooth connection is established from the right earbud. For the most stable connection, keep the device near right hand side or in right pocket.
- If you prefer to wear only one earbud, you must wear the right earbud.
- Only ONE Bluetooth device can be connected at a time. Turn off Bluetooth on unwanted devices and turn on Bluetooth on chosen device to connect.

For full User Manual and troubleshooting, please visit JLABAUDIO.COM

OFFICIAL AUDIO PARTNER OF MAJOR LEAGUE SOCCER

#FINDYOURGO

QUICK START GUIDE

For full User Manual + other JLab products visit JLABAUDIO.COM

420mm±2mm