

WELCOME TO THE LAB

The Lab is where you'll find real people, developing really great products, in a real place called San Diego.

PERSONAL TECH DONE BETTER



Designed for You

We actually listen to what you want and we're always looking for ways to make everything easier and better for you.



Lab Quality Sound

Choose from different settings and customize your sound style to match exactly what you're doing.



Surprisingly Awesome Value

We always pack in the most functionality and fun into every product at a truly accessible price.

#yourkindoftech

Tech all about you

WITH LOVE FROM THE LAB

We have lots of different ways to show we care.

GET STARTED + FREE GIFT

Product updates | How-to tips | FAQs & more

Go to jlab.com/register to unlock your customer benefits including a free gift.

Gift for US only. No APO/FPO/DPO addresses.

3 MONTHS FREE

Get 3 free months of Tidal with your purchase.

Visit jlab.com/tidal. Happy listening!



THE COMPLETE EXPERIENCE



Download the JLab Store app for sound tools, exclusive product alerts, and the latest news.



WE GOT YOUR BACK

We're obsessed with creating the best possible experience around owning our products. If you have any questions, concerns, or feedback, we're here for you. Contact a real human on our U.S.-based customer support team:

Website: jlab.com/contact

Email: support@jlab.com

Phone U.S.: +1 (405) 445-7219

Phone U.K./EU: +44 (20) 8142 9361

(Check hours jlab.com/hours)

Visit jlab.com/warranty to initiate a return or exchange.

LATEST AND GREATEST

Our team is constantly improving your product experience. This model may have new features or controls which are not detailed in this guide.

For the latest version of the manual, scan the QR code below.



OFFICIAL AUDIO PARTNER OF MAJOR LEAGUE SOCCER

BETTER TOGETHER

JLab is a proud to provide Major League Soccer athletes and gamers with the best personal tech in the locker rooms, for travel and pre-game focus. We're introducing JLab's real innovation and surprisingly awesome value to the passionate, authentic fans of MLS.

FCC ID: 2AHYV-GWKPOP IC: 21316-GWKPOP



JLAB®



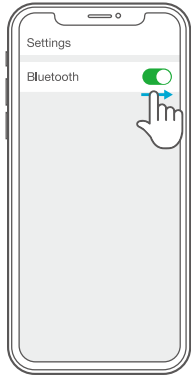
GO WORK POP

QUICK START GUIDE

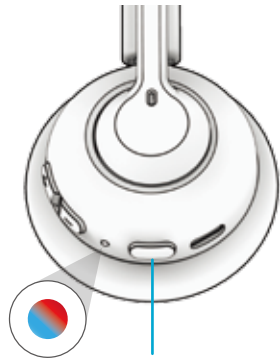
BLUETOOTH PAIRING

1

Turn on Bluetooth in your device settings.



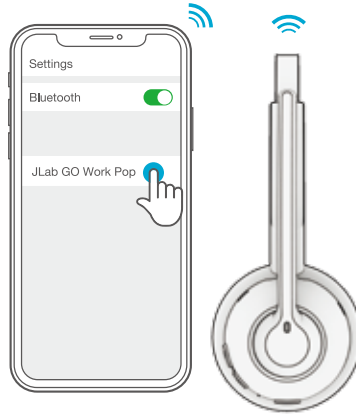
2



Press and hold button for **8 seconds**. Release. Lights will flash blue/red.

3

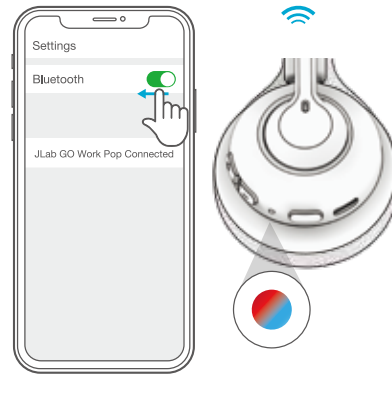
Select "JLab GO Work Pop" in your device settings to connect.



MULTIPOINT (CONNECT 2 DEVICES SIMULTANEOUSLY)

1

Once **FIRST** device is connected, turn off Bluetooth in device settings. GO Work Pop will auto enter Bluetooth Pairing.



2

Enter your **SECOND** device Bluetooth settings and connect to GO Work Pop.



3

Enter your **FIRST** device settings. Turn on Bluetooth and reconnect to GO Work Pop.



For more info and troubleshooting on MULTIPOINT visit: [JLAB.COM/MULTIPOINT](https://www.jlab.com/multi-point)

BUTTON FUNCTIONS

VOLUME UP:
1x press

TRACK FORWARD:
Press and hold 2+ seconds

VOLUME DOWN:
1x press

TRACK BACKWARD:
Press and hold 2+ seconds

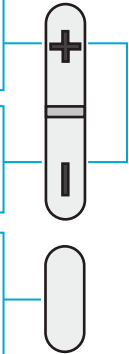
POWER ON/OFF:
Press and hold 2+ seconds

**PLAY/PAUSE/ANSWER/
HANG UP CALLS:**
1x press

REJECT INCOMING CALL:
Press and hold 1+ second

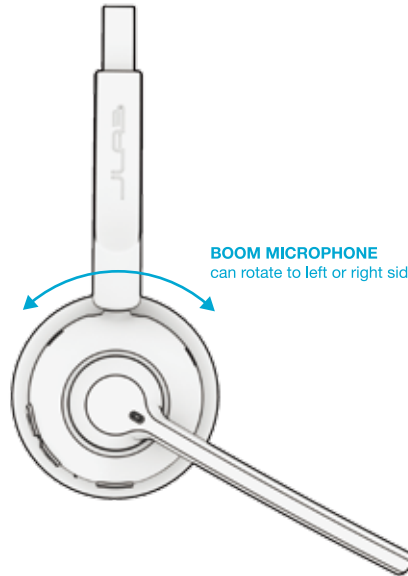
**ACTIVATE SIRI (iOS) OR
"OK GOOGLE" (ANDROID):**
2x press

BLUETOOTH PAIRING:
See Bluetooth Pairing page.



**SWITCH EQ
VOICE / MUSIC:**
Press and hold both buttons
simultaneously

BOOM MICROPHONE
can rotate to left or right side

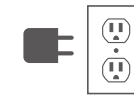


CHARGING

Connect to computer or USB 5v 1A (or less) output device.



OR



CHARGING