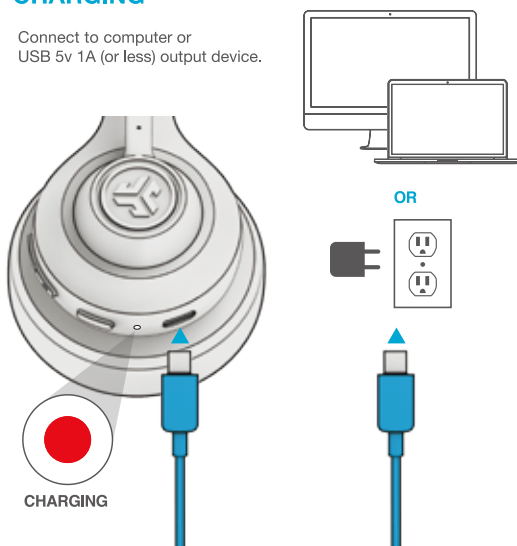


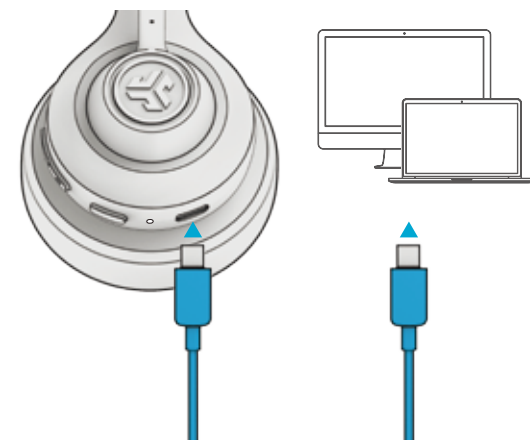
### CHARGING

Connect to computer or USB 5v 1A (or less) output device.



### WIRED CONNECTION

Connect the GO Work 2 cable to computer. Check your PC/Mac Input and Output settings.



### DOWNLOAD THE APP

Customize GO Work 2 features and update the latest software.



SCAN ME



### TROUBLESHOOTING

#### WINDOWS 7/8/10/11: NO MICROPHONE AUDIO

Depending on your PC, the Bluetooth might not detect the proper Bluetooth protocol. This is a known issue with certain Windows OS.

1. Open the Bluetooth & Device settings and enter the View more devices tab.
2. Remove all Bluetooth devices that are already connected.
3. Reconnect your GO Work 2 FIRST to your PC, followed by other Bluetooth devices. The GO Work 2 should display "Connected voice, music".

For more info and troubleshooting visit: [JLAB.COM/SUPPORT](https://www.jlab.com/support)

## WELCOME TO THE LAB

The Lab is where you'll find real people, developing really great products, in a real place called San Diego.

### PERSONAL TECH DONE BETTER



**Designed for You**  
We actually listen to what you want and we're always looking for ways to make everything easier and better for you.



**Lab Quality Sound**  
Choose from different settings and customize your sound style to match exactly what you're doing.



**Surprisingly Awesome Value**  
We always pack in the most functionality and fun into every product at a truly accessible price.

## #yourkindoftech

Tech all about you

### WITH LOVE FROM THE LAB

We have lots of different ways to show we care.

#### GET STARTED + FREE GIFT

Product updates | How-to tips | FAQs & more

Go to [jlab.com/register](https://www.jlab.com/register) to unlock your customer benefits including a free gift.

*Gift for US only. No APO/FPO/DPO addresses.*



### WE GOT YOUR BACK

We're obsessed with creating the best possible experience around owning our products. If you have any questions, concerns, or feedback, we're here for you. Contact a real human on our U.S.-based customer support team:

Website: [jlab.com/contact](https://www.jlab.com/contact)

Email: [support@jlab.com](mailto:support@jlab.com)

Phone U.S.: +1 (405) 445-7219

Phone U.K./EU: +44 (20) 8142 9361

(Check hours [jlab.com/hours](https://www.jlab.com/hours))

Visit [jlab.com/warranty](https://www.jlab.com/warranty) to initiate a return or exchange.

### LATEST AND GREATEST

Our team is constantly improving your product experience. This model may have new features or controls which are not detailed in this guide.

For the latest version of the manual, scan the QR code below.



202~JKM045

202~JKM056

FCC ID: 2AHYV-GOWORK2

FCC ID: 2AHYV-GWDGL1

JLAB GO WORK 2

CMIT ID: XXXXXXXXXXXX

IC: 21316-GOWORK2

IC: 21316-GWDGL1

JLAB GO WORK 2-DONGLE

CMIT ID: XXXXXXXXXXXX



ENERGY PERFORMANCE VERIFIED

ENERGY STAR

ENERGY STAR

ENERGY STAR

ENERGY STAR

ENERGY STAR

ENERGY STAR

ENERGY STAR

ENERGY STAR

ENERGY STAR

ENERGY STAR

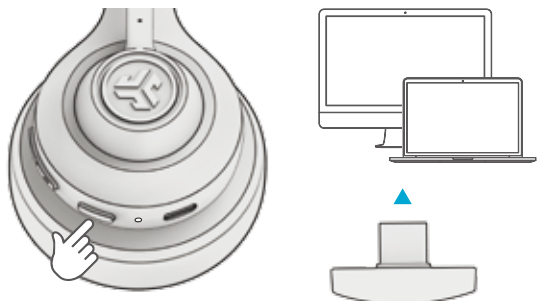
ENERGY STAR

### USB-C DONGLE CONNECTION

1

Power on GO Work 2 and plug in USB-C dongle into PC/Mac/Android. (avoid hubs/adapters)

This connection will override any current Bluetooth connections.



2

Check your device settings.



#### SETUP DONGLE WITH PC (WINDOWS 7/8/10/11)

1. From the Start menu, select the Control Panel.
2. From the Control Panel, select the Sound icon.
3. Select the Recording tab and select "JLab GO Work 2".
4. Select the Playback tab and select "JLab GO Work 2".

#### SETUP DONGLE WITH MAC (macOS 10.10 or HIGHER)

1. Open System Preferences and select the Sound icon.
2. Select the Input tab and select "JLab GO Work 2".
3. Select Output tab and select "JLab GO Work 2".
4. From this screen, set the Output volume to desired level.

### MULTIPOINT (CONNECT 2 DEVICES SIMULTANEOUSLY)

Multipoint is supported when connecting to two devices via Bluetooth. The USB-C Dongle and Wired connection methods create dedicated connection channels and do not support Multipoint.

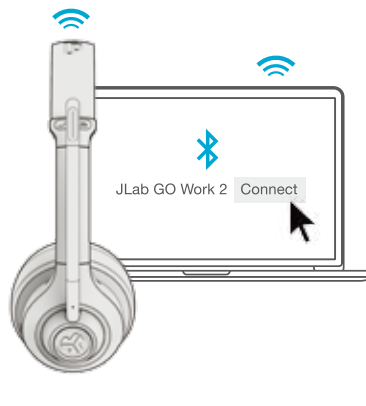
1

Once **FIRST** device is connected, turn off Bluetooth in device settings. GO Work 2 will auto enter Bluetooth Pairing.



2

Enter your **SECOND** device Bluetooth settings and connect to GO Work 2.



3

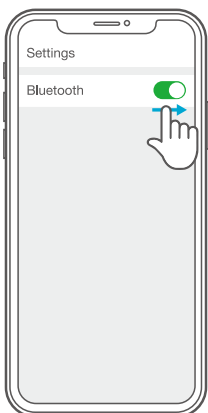
Enter your **FIRST** device settings. Turn on Bluetooth and reconnect to GO Work 2.



### BLUETOOTH CONNECTION

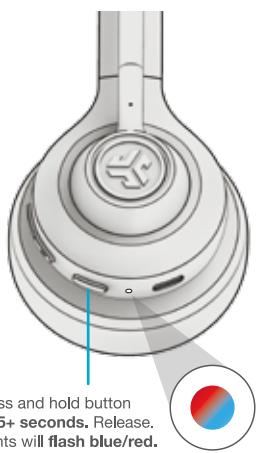
1

Turn on Bluetooth in your device settings.



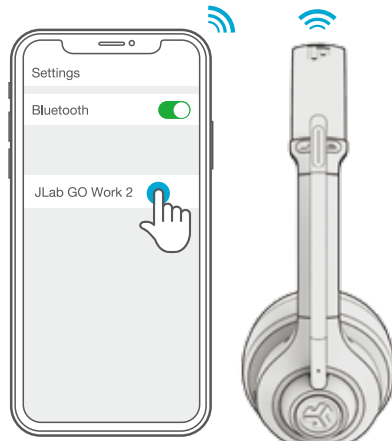
2

Press and hold button for 5+ seconds. Release. Lights will flash blue/red.



3

Select "JLab GO Work 2" in your device settings to connect.



### BUTTON FUNCTIONS

**VOLUME UP:**  
1x press

**TRACK FORWARD:**  
Press and hold 2+ seconds

**VOLUME DOWN:**  
1x press

**TRACK BACKWARD:**  
Press and hold 2+ seconds

**POWER ON/OFF:**  
Press and hold 2+ seconds

**PLAY/PAUSE/ANSWER/  
HANG UP CALLS:**  
1x press

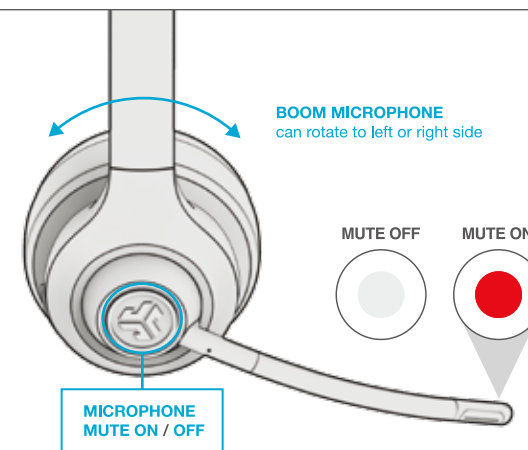
**REJECT INCOMING CALL:**  
Press and hold 1+ second

**ACTIVATE SIRI (IOS) OR  
"OK GOOGLE" (ANDROID):**  
2x press

**HEAR YOURSELF ON/OFF:**  
3x press (when on call)



**SWITCH EQ  
VOICE / MUSIC:**  
Press and hold both buttons simultaneously



**BOOM MICROPHONE**  
can rotate to left or right side

**MUTE OFF**

**MUTE ON**

**MICROPHONE  
MUTE ON / OFF**



# JLAB®



## GO WORK 2nd Gen WIRELESS ON-EAR HEADSET

### QUICK START GUIDE