

Antenna Sample Datasheet

customer:	Dongguan yuanfenglun Technology Co., LTD
entry name:	JT1005-R
Material category:	BT antenna
Antenna Type	PIFA
Antenna Material	FPC
edition:	A12
Date:	2024.7.6

Contents

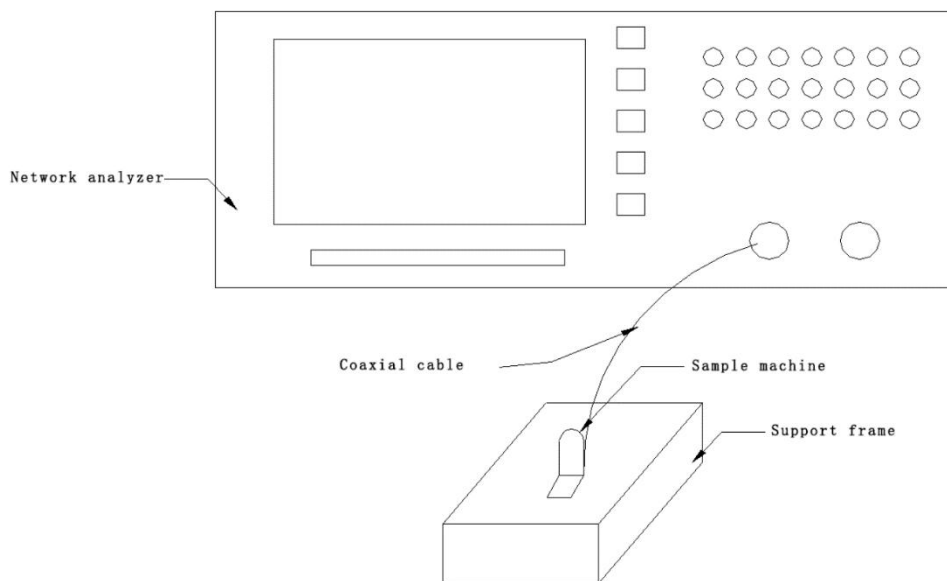
1: Antenna test equipment.....	1
2: Passive test report.....	3
3: Matching circuit.....	4
4: Structural drawing.....	5
5: Antenna diagram.....	6

1: Antenna test equipment

List of meters: Agilent 5071B;

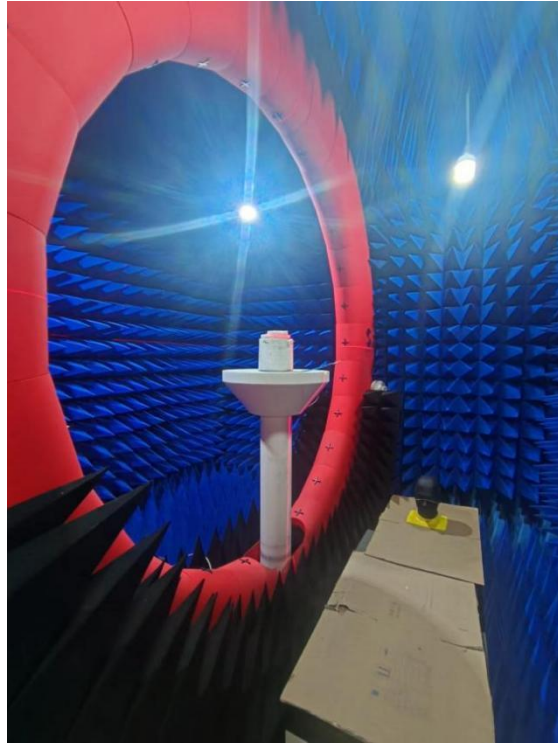


1.1 The principle diagram of the ETS anechoic chamber



Picture1. Antenna static test connection method

1.2 Pictures of the ETS anechoic chamber



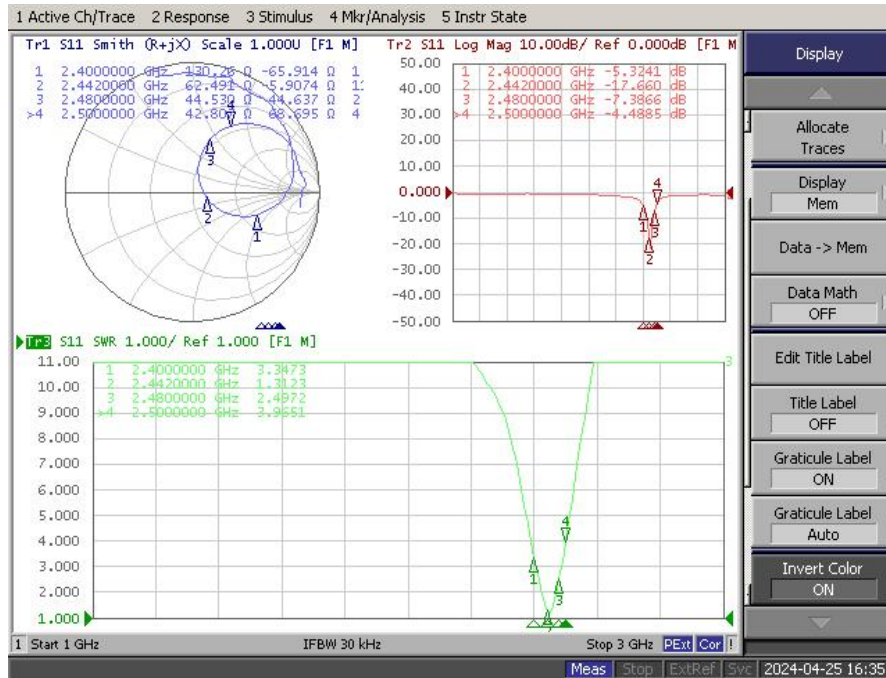
Inside the ETS anechoic chamber



Test Machine

2: Passive test report

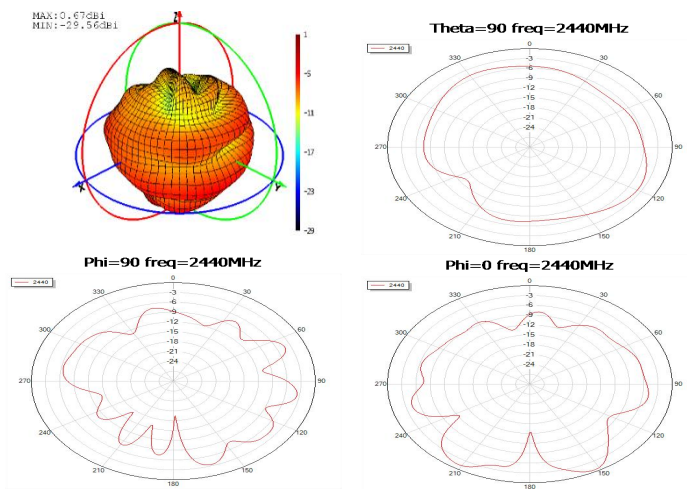
2.1: BT antenna S11 parameters



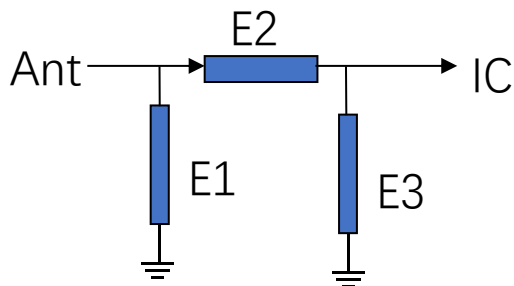
2.2: Passive efficiency of antenna

Freq(MHz)	Gain(dBi)	Efficiency(%)
2400	-1.93	9.81
2410	-1.31	10.62
2420	-0.56	12.35
2430	0.09	14.45
2440	0.67	16.75
2450	1.22	20.51
2460	1.4	22.52
2470	1.16	22.74
2480	0.26	20.72

2.3: Passive pattern of BT antenna

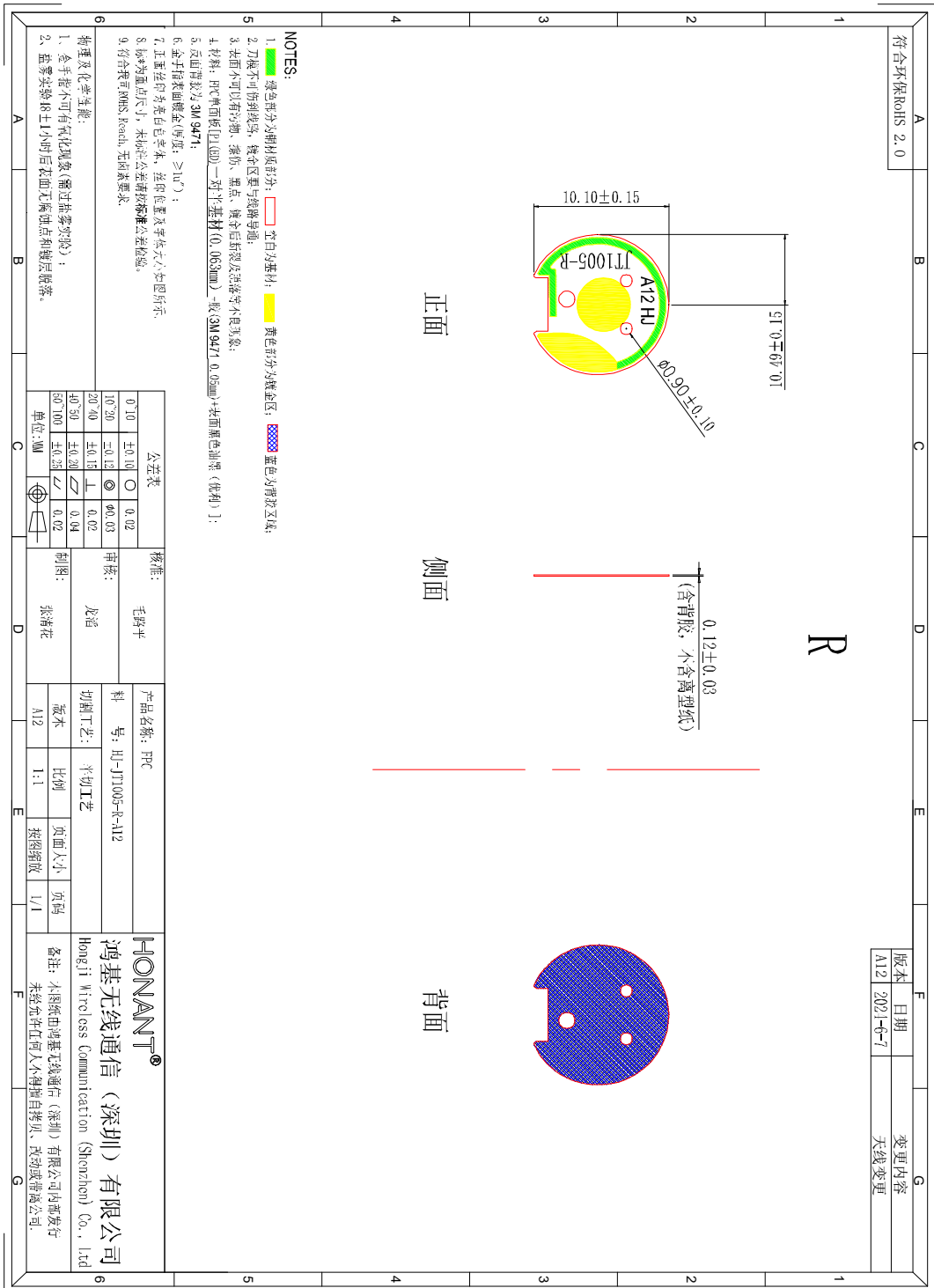


3: Matching circuit



Element	Value
E1	N/A
E2	0R
E3	N/A

4: Structural drawing



5: Antenna diagram

