



## LATEST AND GREATEST

Our team is constantly improving your product experience. This model may have new features or controls which are not detailed in this guide.

For the latest version of the manual, scan the QR code below.



FCC ID: 2AHYV-GOTWS

## WITH LOVE FROM THE LAB

We have lots of different ways to show we care.

### GET STARTED + FREE GIFT

Product updates | How-to tips | FAQs & more

Go to [jlab.com/register](https://jlab.com/register) to unlock your customer benefits including a free gift.

Gift for US only. No APO/FPO/DPO addresses.

### WE GOT YOUR BACK

We're obsessed with creating the best possible experience around owning our products. If you have any questions, concerns, or feedback, we're here for you. Contact a real human on our U.S.-based customer support team:

**Website:** [jlab.com/contact](https://jlab.com/contact) **Email:** [support@jlab.com](mailto:support@jlab.com)

**Phone U.S.:** +1 (405) 445-7219

**Phone U.K./EU:** +44 (20) 8142 9361  
(Check hours [jlab.com/hours](https://jlab.com/hours))

Visit [jlab.com/warranty](https://jlab.com/warranty) to initiate a return or exchange.

## THE RIGHT SOUND FOR EVERY MOMENT

We get it, sound is personal. Choose your sound preferences from our EQ3 settings and customize your sound style to match exactly what you're doing.

### EQUALIZER MODES

**"JLab SIGNATURE"**  
JLab C3™ signature sound with amplified vocals and bass

**BEST FOR**  
Best option for most music  
Pop, rock, country, electronic and more

**"BALANCED"**  
Even sound with no additional sound enhancements

**BEST FOR**  
Podcasts, Audiobooks  
Classical music

**"BASS BOOST"**  
Amplified bass and sub-bass

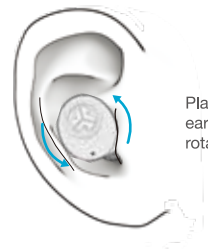
**BEST FOR**  
Working out, sport and fitness  
Hip hop, rap, electronic

**"CUSTOM"**  
Personalize your EQ through the JLab App.

## FIND YOUR FIT



Try all ear tips for best fit and proper seal.



Place the earbud in the ear canal and slightly rotate to adjust for best fit.

## QUICK TIPS

• The left or right earbud can be used independently for music and phone calls. Simply choose one and take out of the case to connect.

• Fully dry off earbuds before putting in the charging case to avoid any damage to the case. The earbuds are sweat/water resistant but the case is not.

## TROUBLESHOOTING CONNECTION FAILURE OR EARBUDS DISCONNECTED FROM EACH OTHER (MANUAL RESET)

- 1 Keep the earbuds in the charging case and forget JLab GO from your Bluetooth device settings.
- 2 Quick tap 7x on one earbud in charging case. Earbud blinks blue 4 times.
- 3 Quick tap 7x on other earbud in charging case. Earbud blinks blue 4 times.
- 4 Take both earbuds out of the charging case. One earbud will be solid white and other will blink blue/white indicating ready to pair to your device.

Instructional videos at:  
[HELP.JLAB.COM](https://help.jlab.com)



**GO**  
TRUE WIRELESS EARBUDS

**QUICK START** GUIDE





## WELCOME TO THE LAB

The Lab is where you'll find real people, developing really great products, in a real place called San Diego.

### PERSONAL TECH DONE BETTER



#### Designed for You

We actually listen to what you want and we're always looking for ways to make everything easier and better for you.



#### Lab Quality Sound

Choose from different settings and customize your sound style to match exactly what you're doing.



#### Surprisingly Awesome Value

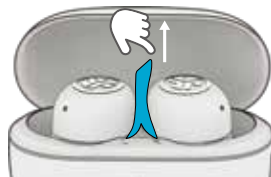
We always pack in the most functionality and fun into every product at a truly accessible price.

## #yourkindoftech

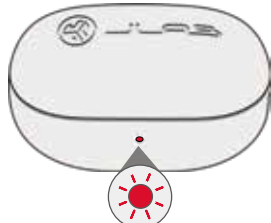
Tech all about you

### PAIR UP

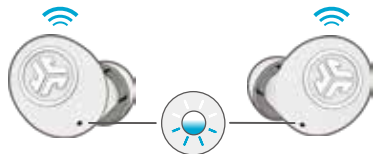
- 1 Remove tab and close door.



- 2 Red light on case indicates charge. Remove earbuds from case.

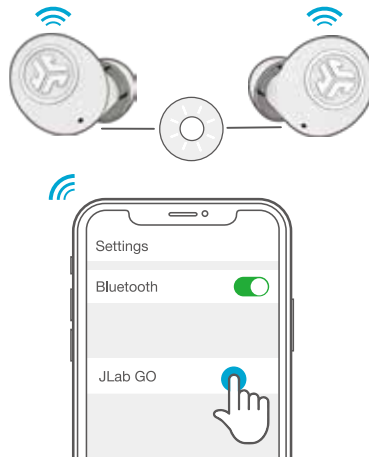


- 3 One earbud will blink blue/white indicating ready to pair to your device.



4

Select JLab GO in your device's Bluetooth settings to connect.



Voice prompt "Bluetooth connected" followed by **blinking white lights** will indicate connection.

### ADDING NEW/ADDITIONAL BLUETOOTH DEVICES:

Turn OFF Bluetooth from any previously connected device. Turn ON Bluetooth from new device. Take earbuds out of the case. Earbuds will automatically enter Bluetooth Pairing. Select JLab GO in device settings to connect.

### GO AHEAD, PRESS THE BUTTON

1x ● 2x ●● 3x ●●● Press Hold —

LEFT



VOLUME DOWN ●  
SIRI/OK GOOGLE ●●  
EQ CHANGE ●●●  
TRACK BACK —

RIGHT



VOLUME UP ●  
PLAY/PAUSE ●●  
BE AWARE ●●●  
TRACK FORWARD —

ANSWER CALL ●

HANG UP ●●

REJECT INCOMING CALLS —

### DOWNLOAD THE APP

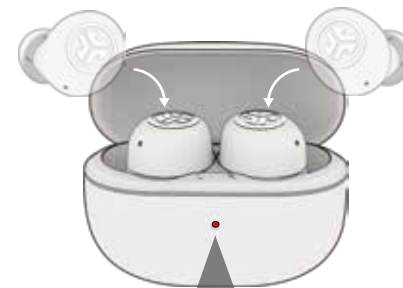
Customize GO features and update the latest software.

Download the **JLab App** in Apple/Google Play Store.



### GET CHARGED (EARBUDS)

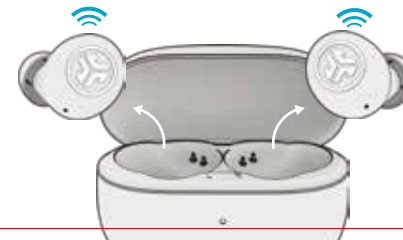
- 1 Earbuds will power off when placed in the case and start charging the earbuds.



**Solid Red**  
Case 100-25%

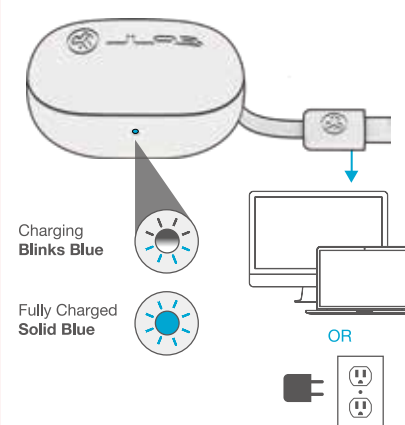
**Blinks 3x Red**  
Case less than 25%  
(charge case)

- 2 Earbuds will auto power on and connect to your device when removed.



### GET CHARGED (CASE)

Connect the GO into a computer or USB-C 5V 1A (or less) output device.



Charging  
**Blinks Blue**

Fully Charged  
**Solid Blue**

OR

