

119mm

FITTING

Try all ear tips for best fit and proper seal. Place the earbud in the ear canal and slightly rotate to adjust for best fit.

VOICE PROMPTS

"Hello": Power ON
"Ready to Pair": GO Air is ready to pair to your Bluetooth device
"Bluetooth Connected": Earbud is connected to device
"Battery Full": 100-75%
"Battery Medium": 75-50%
"Low Battery": Less than 25% (When power decreases to 10%, "Low Battery" will play one time)
"Goodbye": Power OFF

EQUALIZER MODES

JLab SIGNATURE
 JLab C3™ signature sound with amplified vocals and bass

BALANCED
 Even sound with no additional sound enhancements

BASS BOOST
 Amplified bass and sub-bass

CHARGING CASE

Connect the GO Air into a computer or USB 5V 1A (or less) output device.

Charging OR Fully Charged

QUICK TIPS

- The left or right earbud can be used independently for music and phone calls. Simply choose one and take out from the case to connect.
- Only ONE Bluetooth device can be connected at a time. Turn off Bluetooth on unwanted devices and turn on Bluetooth on chosen device to connect.
- Fully dry off earbuds before putting in the charging case to avoid any damage to the case. The earbuds are sweat/water resistant but the case is not.

3 MONTHS FREE TIDAL

With purchase, Visit Jlabaudio.com/tidal

Warm-up Your Headphones

Optional: Burn-in your audio equipment with the JLab Audio App or access the burn-in method at: Jlabaudio.com/burnin

US Compliance

FCC Information FCC ID: 2AHY-GOAIR
 This equipment has been tested and found to comply with the limits for a Class B digital device, pursuant to Part 15 of the FCC Rules. These limits are designed to provide reasonable protection against harmful interference in a residential installation. This equipment generates, uses and can radiate radio frequency energy and, if not installed and used in accordance with the instructions, may cause harmful interference to radio communications. However, there is no guarantee that interference will not occur in a particular installation. If this equipment does cause harmful interference to radio or television reception, which can be determined by turning the equipment off and on, the user is encouraged to try to correct the interference by one or more of the following measures:

- Reorient or relocate the receiving antenna.
- Increase the separation between the equipment and receiver.
- Connect the equipment into an outlet on a circuit different from that to which the receiver is connected.
- Consult the dealer or an experienced radio/TV technician for help.

If you cannot eliminate the interference, the FCC requires that you stop using your product. Changes or modifications not expressly by the party responsible for compliance could void the user's authority to operate the equipment.

This device complies with Part 15 of the FCC Rules. Operation is subject to the following two conditions: (1) This device may not cause harmful interference, and (2) this device must accept any interference received, including interference that may cause undesired operation.

EU Compliance

CE

FRAG, LLC (dba: JLab Audio) hereby declares that this device is in compliance with the essential requirements and other relevant provisions of the RED directive. A copy of the EU Declaration of Conformity is available at Jlabaudio.com/compliance.
 JLab Audio 2281 Las Palmas Drive, Suite 101, Carlsbad, CA 92011, USA

The symbol above indicates that this product and/or battery should not be disposed of with household waste. When you decide to dispose of this product and/or its battery, do so in accordance with local environmental laws and guidelines.

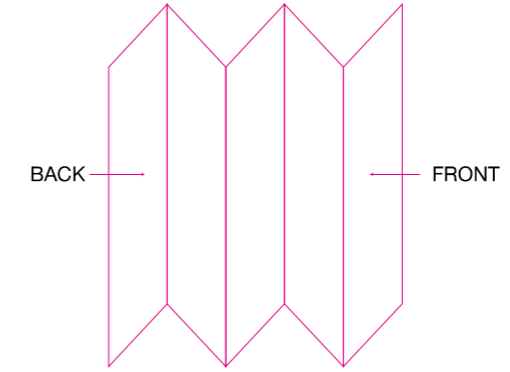
Battery Caution & Disposal Information
 Please take care of your battery. Do not disassemble, burn, puncture, crush or bend your battery. Improper operation of the battery may produce smoke. In such an event, ventilate the area. Extinguish any flames with carbon dioxide, dry-chemical fire extinguisher, or cover with sand or dirt. Take care to avoid conditions of excessive moisture for prolonged periods and do not immerse. Do not expose to temperatures above 50°C/122°F. Charge battery fully before storage or if stored for longer than three months.

Disposal
 At the end of its life, please take care to dispose of this product responsibly. Electronic products and batteries contain materials that can be harmful to the environment. Please do not dispose to unsorted waste. Take your electronic waste to a designated collection or recycling facility by your nearest retailers area. There may be one at your local supermarket.

Contact Us
 If you're unsatisfied with your purchase, please contact us and we'll take care of you! You can contact our US based customer support team:
 Website: Jlabaudio.com/contact
 Email: support@Jlabaudio.com
 Phone U.S.: +1 (408) 445-7219 (M-F 8am-5pm PT)
 Phone U.K.: +44 (20) 3884 3322 (M-F 1600-0100 GMT)
 Visit Jlabaudio.com/warranty to initiate a return or exchange.



正面



306.7mm

BLUETOOTH PAIRING

- Remove pull tab. The charging case light will start pulsing blue.
- Remove earbuds by pulling straight up or from side.
- One earbud will blink blue/white indicating ready to pair to your device.

- Select "JLab GO Air" in your device's Bluetooth settings to connect.

Voice prompt "You're connected" followed by solid white lights will indicate you are connected.

ADDING NEW/ADDITIONAL BLUETOOTH DEVICES:

Turn OFF Bluetooth from any previously connected device. Turn ON Bluetooth from new device. Take earbuds out of the case. Earbuds will automatically enter Bluetooth Pairing. Select "JLab GO Air" in device settings to connect.

BUTTON FUNCTIONS

LEFT

VOLUME DOWN: Single tap
SIRI (IOS) or "OK GOOGLE" (ANDROID): Double tap
TRACK BACK: Press & hold 1+ sec
EQ CHANGE: Triple Tap
POWER ON: Press & hold 3+ sec

RIGHT

VOLUME UP: Single tap
PLAY/PAUSE: Double tap
TRACK FORWARD: Press & hold 1+ sec
ANSWER: Single tap
HANGUP: Double tap
REJECT INCOMING CALLS: Press & hold 1+ sec
EQ CHANGE: Triple Tap
POWER ON: Press & hold 3+ sec

CHARGING EARBUDS

- Earbuds will power off when placed in the case and first show charging case battery level.
- Then pulsing blue light indicates earbuds are charging and turns off when fully charged.
- Earbuds will auto power on and connect to your device when removed.

Solid green 100-25% Blinking red less than 25% (charge case)



反面

品名: A901-05说明书		版本: V1
料号: 415-A9010511-JA1		
发行日期: 20191207		
更新日志		
要求		
尺寸: 306.7*119mm		
折叠尺寸: 61.2*199mm		
材质: 157g双铜		
工艺: 过哑油		
<ol style="list-style-type: none"> 使用材质足重足克; 表面划伤面积小于总面积0.5%; 印刷色差小于10%; 折合对齐、平整; 展开正负公差小于2mm,折合正负公差小于1mm。 		
颜色		
制作: Che	<p>Make sound more beautiful and life smarter.</p> <p>本资料的图案及文字均为科奈德科技有限公司的知识产权。任何未经授权的影印/转写或照相的复制行为, 将受到法律的追究。</p>	
审核:		
批准:		