

FREE GIFT

when you register this product jlabaudio.com/register
Product updates | How-to tips | FAQs & more

Gift for US only. No PO Boxes or APO/FPO/DPO addresses.

3 MONTHS FREE TIDAL

With purchase. Visit jlabaudio.com/tidal

Shop products | Product alerts | Burn-in your headphones



JLab Audio + Burn-in Tool



US Compliance

FCC Information

FCC ID: 2AHYV-GAME8

This equipment has been tested and found to comply with the limits for a Class B digital device, pursuant to Part 15 of the FCC Rules. These limits are designed to provide reasonable protection against harmful interference in a residential installation. This equipment generates, uses and can radiate radio frequency energy and, if not installed and used in accordance with the instructions, may cause harmful interference to radio communications. However, there is no guarantee that interference will not occur in a particular installation. If this equipment does cause harmful interference to radio or television reception, which can be determined by turning the equipment off and on, the user is encouraged to try to correct the interference by one or more of the following measures:

- Reorient or relocate the receiving antenna.
- Increase the separation between the equipment and receiver.
- Connect the equipment into an outlet on a circuit different from that to which the receiver is connected.
- Consult the dealer or an experienced radio/TV technician for help.

If you cannot eliminate the interference, the FCC requires that you stop using your product. Changes or modifications not expressly by the party responsible for compliance could void the user's authority to operate the equipment. This device complies with Part 15 of the FCC Rules. Operation is subject to the following two conditions: (1) this device may not cause harmful interference, and (2) this device must accept any interference received, including interference that may cause undesired operation.

EU Compliance



PEAG LLC dba JLab Audio hereby declares that this device is in compliance with the essential requirements and other relevant provisions of the RED directive.

A copy of the EU Declaration of Conformity is available at jlabaudio.com/compliance

JLab Audio
2281 Las Palmas Drive, Suite 101, Carlsbad, CA 92011, USA



The symbol above indicates that this product and/or battery should not be disposed of with household waste. When you decide to dispose of this product and/or its battery, do so in accordance with local environmental laws and guidelines.

Battery Caution & Disposal Information

Please take care of your battery. Do not; disassemble, burn, puncture, crush or bend your battery. Improper operation of the battery may product smoke. In such an event, ventilate the area. Extinguish any flames with carbon dioxide, dry-powder fire extinguisher, or cover with sand or mud. Take care to avoid conditions of excessive moisture for prolonged periods and do not immerse. Do not expose to temperatures above 50°C/122°F. Charge battery fully before storage or if stored for longer than three months.

Disposal

At the end of its life, please take care to dispose of this product responsibly. Electronic products and batteries contain materials that can be harmful to the environment. Please do not dispose to unsorted waste. Take your electronic waste to a designated collection or recycling facility to be recycled properly. Your local council authority will be able to tell you where your nearest facilities are. There may be one at your local supermarket.

Contact Us

If you're unsatisfied with your purchase, please contact us and we'll take care of you! You can contact our US based customer support team:

Website: jlabaudio.com/contact

Email: support@jlabaudio.com

Phone U.S.: +1 (405) 445-7219 (M-Th 8am-5pm, F 8am-3pm PT)

Phone U.K.: +44 (20) 3884 3322 (M-Th 1600-0100, F 1600-2300 GMT)

Visit jlabaudio.com/warranty to initiate a return or exchange.

QUICK START GUIDE

For full User Manual
+ other JLab products visit
JLABAUDIO.COM



OFFICIAL AUDIO PARTNER OF MAJOR LEAGUE SOCCER

#FINDYOURGO



22+ HOURS
of PLAYTIME
for **MOBILE**
— **GAMING**

Compatible with Console Cord



XBOX™

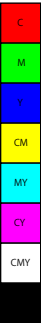
PLAYSTATION™

NINTENDO®



PLAY GAMING

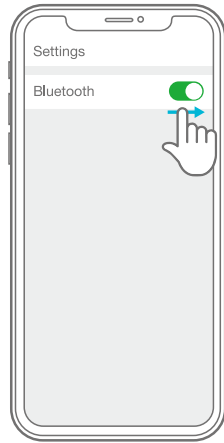
WIRELESS HEADSET



BLUETOOTH PAIRING

1

Turn on Bluetooth in your device settings.



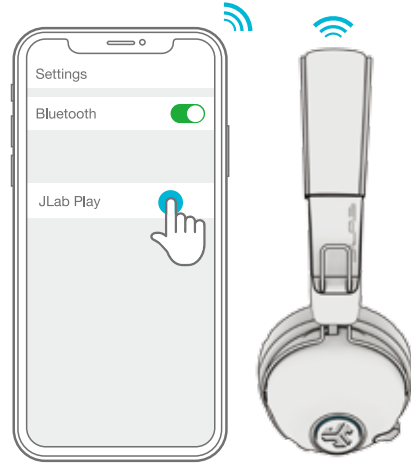
2

Press and hold button for 8 seconds. Lights will flash blue/red.



3

Select "JLab Play" in your device settings to connect.



PC/MAC SETUP IF CONNECTED TO BLUETOOTH

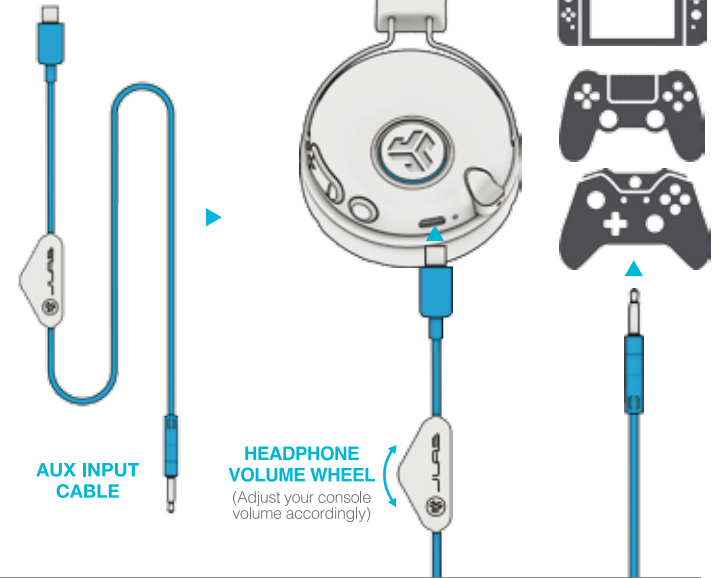
SETUP with PC (Windows 7, 8, or 10):

1. From the Start Menu, select the Control Panel.
2. Select Hardware and Sound category.
3. Select the Sound category.
4. The Playback tab should show JLab Play Gaming Headphones connected as the Default Device.
5. Click the next tab that says Recording.
6. Right click the JLab Play Gaming Headphones icon and select "Set as Default Device".
7. Click OK box to save changes.

SETUP with MAC (macOS 10.1 and higher):

1. Open System Preferences and select the Sound icon.
2. Select the Input tab and select "JLab Play".
3. Select Output tab and select "JLab Play".
4. From this screen, set the Output volume to desired level.
5. Closing out of the window will save settings.

CONSOLE+MOBILE GAMING

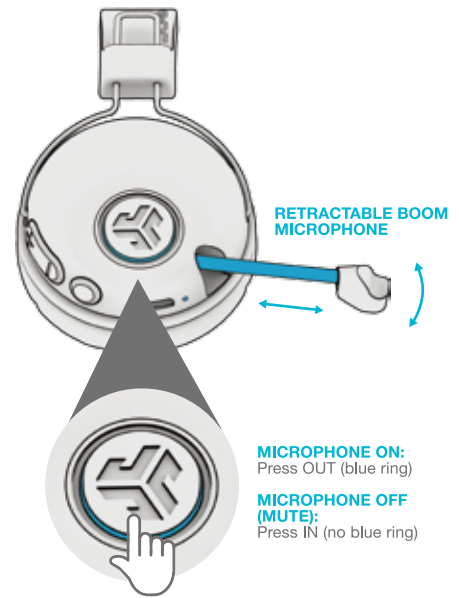


BUTTON FUNCTIONS

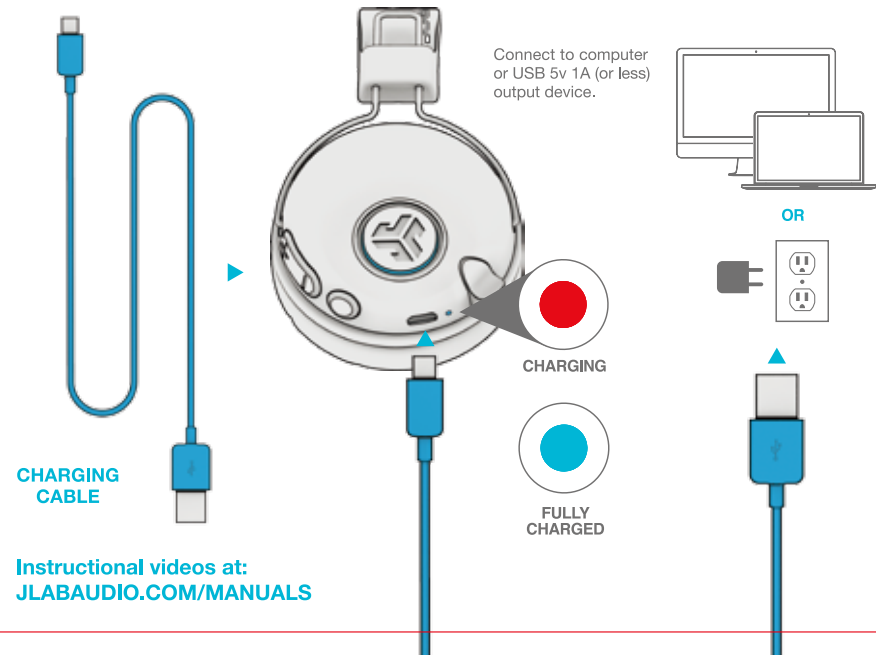
- VOLUME UP:** Press once
- TRACK FORWARD:** Press and hold 2+ seconds
- VOLUME DOWN:** Press once
- TRACK BACKWARD:** Press and hold 2+ seconds
- POWER ON / OFF:** Press and hold 2+ seconds
- PLAY / PAUSE / ANSWER / HANG UP CALLS:** Press once
- REJECT INCOMING CALL:** Press and hold 1+ second
- ACTIVATE SIRI (iOS) OR "OK GOOGLE" (ANDROID):** Press twice
- BLUETOOTH PAIRING:** See Bluetooth Pairing page

- SWITCH GAMING / MUSIC EQ:** Press and hold 1+ second both buttons simultaneously
- GAMING:** 1 Beep
- MUSIC:** 2 Beeps

- GAMING:** Increased mid-high frequency response for clear vocals and spatial awareness.
- MUSIC:** Amplified vocals and bass for enhanced music listening



CHARGING



Connect to computer or USB 5v 1A (or less) output device.

- CHARGING:** Red light indicator
- FULLY CHARGED:** Blue light indicator

Instructional videos at: JLABAUDIO.COM/MANUALS

NOTES:

- When using the AUX INPUT, the microphone and game volume will also be determined by your console settings. Adjust accordingly.
- The boom microphone and mute function works in both Bluetooth and AUX INPUT modes.
- The button functions on the headphone ear cup will only work in Bluetooth mode.

NOTE: This equipment has been tested and found to comply with the limits for a Class B digital device, pursuant to part 15 of the FCC Rules. These limits are designed to provide reasonable protection against harmful interference in a residential installation. This equipment generates uses and can radiate radio frequency energy and, if not installed and used in accordance with the instructions, may cause harmful interference to radio communications. However, there is no guarantee that interference will not occur in a particular installation. If this equipment does cause harmful interference to radio or television reception, which can be determined by turning the equipment off and on, the user is encouraged to try to correct the interference by one or more of the following measures:

- Reorient or relocate the receiving antenna.
- Increase the separation between the equipment and receiver.
- Connect the equipment into an outlet on a circuit different from that to which the receiver is connected.
- Consult the dealer or an experienced radio/TV technician for help

Changes or modifications not expressly approved by the party responsible for compliance could void the user's authority to operate the equipment.

This device complies with Part 15 of the FCC Rules. Operation is subject to the following two conditions:

- (1) this device may not cause harmful interference, and
- (2) this device must accept any interference received, including interference that may cause undesired operation.