



JLAB®  
| EPIC LAB EDITION  
| EARBUDS

**We love that you are rocking JLab!**  
**We take pride in our products and fully stand behind them.**



#### YOUR WARRANTY

All warranty claims are subject to JLab authorization and at our sole discretion. Retain your proof of purchase to ensure warranty coverage.



#### CONTACT US

Reach out to us at [support@jlab.com](mailto:support@jlab.com) or visit [jlab.com/contact](http://jlab.com/contact)

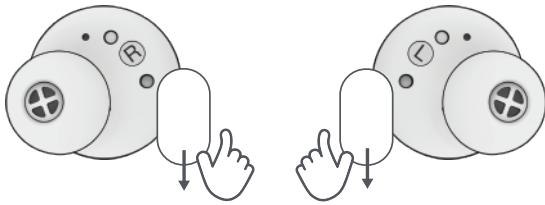
### REGISTER TODAY

[jlab.com/register](http://jlab.com/register)

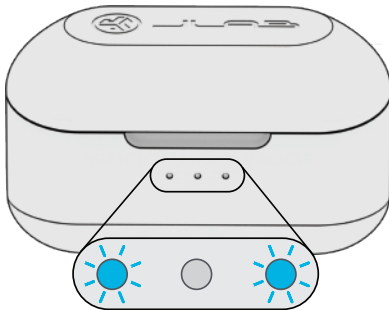
[Product updates](#) | [How-to tips](#)  
[FAQs & more](#)

## PAIR UP (BLUETOOTH)

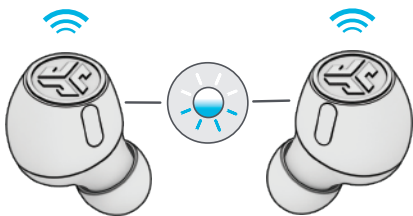
- 1** Remove stickers and place earbuds back in case.



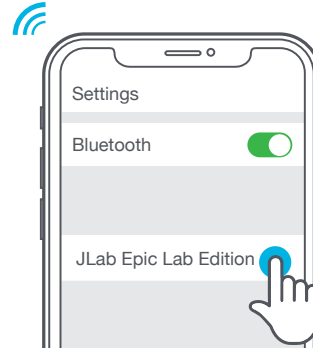
- 2** Lights on case indicate charging. Remove earbuds from case.



- 3** One earbud blinks blue/white = Ready to Pair



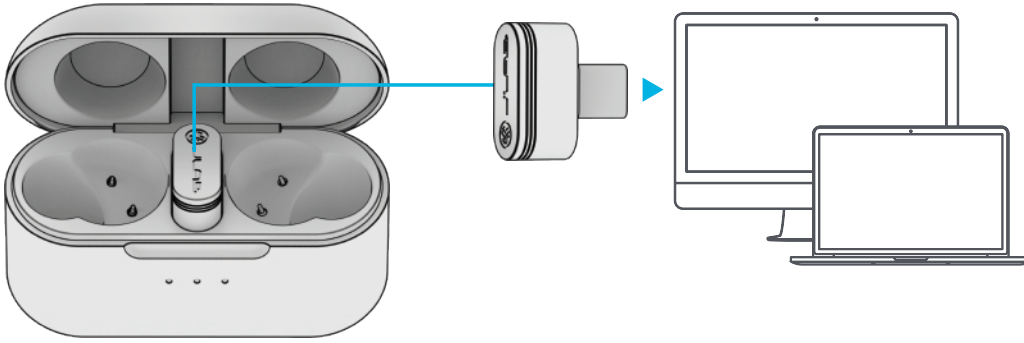
- 4** Select "JLab Epic Lab Edition" in your Bluetooth settings to connect.



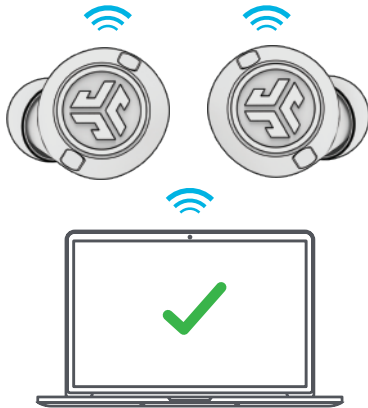
Voice prompt "Bluetooth connected" followed by **lights off** will indicate connection.

## PAIR UP (LE AUDIO)

- 1 Connect the USB-C dongle into PC/Mac/Android. (Dongle should be connected directly without any hubs or adapters to work properly.)



- 2 The earbuds will auto connect to the USB-C dongle and take priority over any previous Bluetooth connection. Removing the dongle will revert back to previous Bluetooth connections.



### SETUP DONGLE WITH PC (WINDOWS 7/8/10/11)

1. In the Settings menu, click System
2. From the System menu, click Sound
3. In the Output section, select Epic Lab Edition Dongle
4. In the Input section, select Epic Lab Edition Dongle

### SETUP DONGLE WITH MAC (macOS 10.10 or HIGHER)

1. Open System Preferences and select the Sound icon
2. Select the Input tab and select Epic Lab Edition Dongle
3. Select Output tab and select Epic Lab Edition Dongle
4. From this screen, set the Output volume to desired level

## GO AHEAD, PRESS THE BUTTON

LEFT



**VOLUME DOWN:** 1x

**VOICE ASSISTANT:** 2x

**NOISE CONTROLS:** Press Hold

**EQ CHANGE:** 3x

RIGHT



**VOLUME UP:** 1x

**PLAY/PAUSE:** 2x

**TRACK FORWARD:** Press Hold

**EQ CHANGE:** 3x

**ANSWER CALL:** 1x

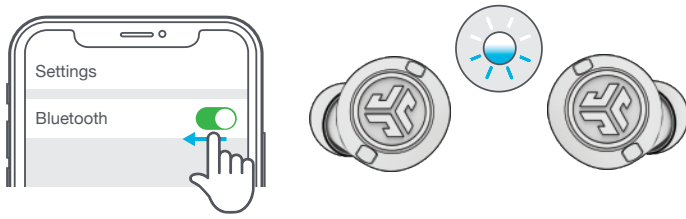
**HANG UP CALL:** 2x

**REJECT INCOMING CALL:** Press Hold

**Note:** The controls are based on Bluetooth connection. Depending on your device and OS, controls will have varied results with USB-C Dongle connection.

# MULTIPOINT

- 1 Once **FIRST** device is connected, turn off Bluetooth in device settings. Earbuds will auto enter Bluetooth Pairing.



- 3 Enter your **FIRST** device Bluetooth settings. Turn on Bluetooth and connect to Epic Lab Edition.

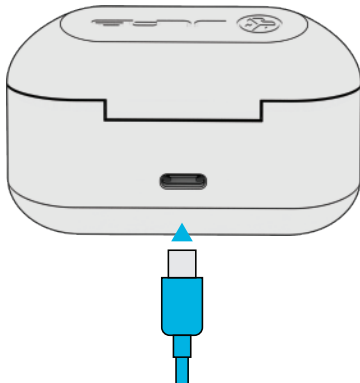


- 2 Enter your **SECOND** device Bluetooth settings and connect to Epic Lab Edition.



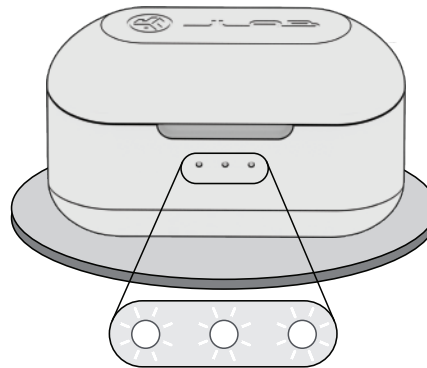
## GET CHARGED (CASE)

Connect the Epic Lab Edition to computer or USB 5V 1A (or less) output device.



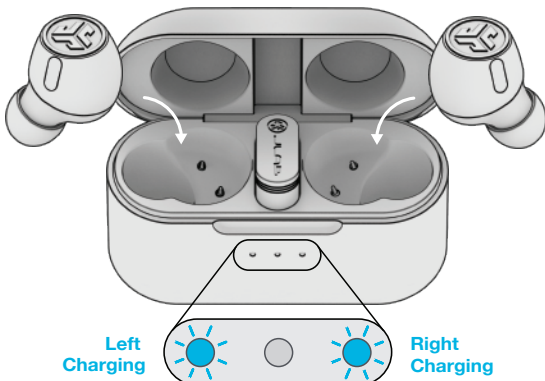
OR

Place on wireless charging pad.



Blinking white = Charging

## GET CHARGED (EARBUDS)



Blue light indicates charging when placed in the case.

Earbuds will auto power on and connect when removed.

# THE RIGHT SOUND FOR EVERY MOMENT

## EQUALIZER MODES



### JLab SIGNATURE

JLab C3™ signature sound with amplified bass and vocals

#### BEST FOR

Best option for most music: Pop, rock, country, electronic and more



### BALANCED

Even sound with no additional enhancements

#### BEST FOR

Podcasts, Audiobooks  
Classical music



### BASS BOOST

Amplified bass and sub-bass

#### BEST FOR

Working out, sport and fitness, Hip hop, rap, electronic



### “CUSTOM”

Personalize your EQ through the JLab App.

## DOWNLOAD THE APP

Customize Epic Lab Edition features and update the latest software.

Download the **JLab App** in Apple/Google Play Store.



## TROUBLESHOOTING

### BLUETOOTH OR EARBUD CONNECTION FAILURE (MANUAL RESET)

- 1 Keep the earbuds in the charging case and forget “JLab Epic Lab Edition” from your Bluetooth device settings.
- 2 Quick tap 7x on one earbud in charging case. Earbud blinks blue 4 times.
- 3 Quick tap 7x on other earbud in charging case. Earbud blinks blue 4 times.
- 4 Take both earbuds out of the charging case. One earbud will be solid white and other will blink blue/white indicating ready to pair to your device.

Instructional videos at: [JLAB.COM/MANUALS](https://www.jlab.com/manuals)



[Shop products](#) | [Product alerts](#) | [Burn-in your headphones](#)

JLab Store + Burn-in Tool



FCC ID: 2AHYV-EPICLE

HVIN: Epic Lab Edition L

HVIN: Epic Lab Edition R

IC: 21316-EPICLE