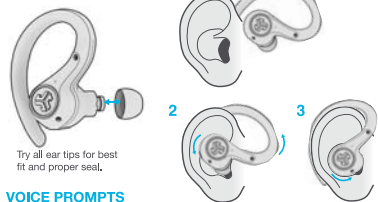


FITTING



Try all ear tips for best fit and proper seal.

VOICE PROMPTS

"Hello": Power ON
"Ready to Pair": Epic Air Sport ANC is ready to pair to your Bluetooth device
"Be Aware": Hear your surroundings
"ANC Low": Noise canceling low
"ANC High": Noise canceling high
"Bluetooth Connected": Earbud is connected to device

"Battery Full": 100-75%
"Battery Medium": 75-25%
"Low Battery": Less than 25% (When power decreases to 10%, "Low Battery" will play one time)
"Goodbye": Power OFF

EQUALIZER MODES

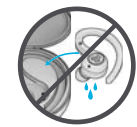
JLab SIGNATURE
 JLab C31™ signature sound with amplified vocals and bass

Customize the EQ settings by downloading the **JLab Air ANC App** in Apple/Google Play Store

BALANCED
 Even sound with no additional sound enhancements

BASS BOOST
 Amplified bass and sub-bass

WARNING



Fully dry off the earbuds before placing in the charging case. If the earbuds are damp or wet, this will cause damage to the charging case. The warranty will be voided if the charging case shows damage by water/sweat.

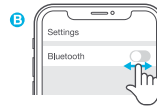
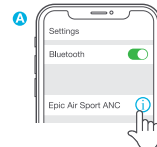
TROUBLESHOOTING:

No audio in one earbud or earbuds are disconnected (Manual Reset)

- 1 Enter your Bluetooth device settings and forget the Epic Air Sport ANC. Fig A
- 2 Keep the earbuds in the charging case and on ONE earbud quickly tap the touch sensor 7x times. Light blinks blue 3 times. Fig B
- 3 Repeat with other earbud. Quickly tap the touch sensor 7x times. Light blinks blue 3 times. Fig C
- 4 Take both earbuds out of the charging case. Wait for Left earbud to turn solid white and Right to blink blue/white. You are now ready to pair to your Bluetooth device.

Bluetooth device does not connect/reconnect

- 1 Enter your Bluetooth device settings and forget the Epic Air Sport ANC. Fig A
- 2 Turn OFF then ON Bluetooth. Fig B
- 3 Take the earbuds out of the case. Wait for one to turn solid white and one to blink blue/white.
- 4 Select "Epic Air Sport ANC" in devices settings to reconnect.



Quick 7x times

Instructional videos at: JLABAUDIO.COM/MANUALS

FREE GIFT

when you register this product Jlabaudio.com/register
 Product updates | How-to tips | FAQs & more

Gift for US only. NO PO Boxes or APO/FPO/DPO addresses.

3 MONTHS FREE
TIDAL

With purchase. Visit Jlabaudio.com/tidal

Shop products | Product alerts | Burn-in your headphones



JLab Audio + Burn-In Tool



US Compliance

FCC Information

This equipment has been tested and found to comply with the limits for a Class B digital device, pursuant to Part 15 of the FCC Rules. These limits are designed to provide reasonable protection against harmful interference in a residential installation. This equipment generates, uses and can radiate radio-frequency energy and, if not installed and used in accordance with the instructions, may cause harmful interference to radio communications. However, there is no guarantee that interference will not occur in a particular installation. If this equipment does cause harmful interference to radio or television reception, which can be determined by turning the equipment off and on, the user is encouraged to try to correct the interference by one or more of the following measures:

- Reorient or relocate the receiving antenna.
- Increase the separation between the equipment and receiver.
- Connect the equipment into an outlet on a circuit different from that to which the receiver is connected.
- Consult the dealer or an experienced radio/TV technician for help.

If you cannot eliminate the interference, the FCC requires that you stop using your product. Changes or modifications not expressly by the party responsible for compliance could void the user's authority to operate the equipment.

This device complies with Part 15 of the FCC Rules. Operation is subject to the following two conditions: (1) this device may not cause harmful interference, and (2) this device must accept any interference received, including interference that may cause undesired operation.

FCC ID: 2AHYV-EARSPORTNC

EU Compliance



HEAD LLC dba JLab Audio hereby declares that this device is in compliance with the essential requirements and other relevant provisions of the RED Directive.

A copy of the EU Declaration of Conformity is available at Jlabaudio.com/compliance

JLab Audio

2281 Las Plumas Drive, Suite 101, Castro Valley, CA 94541, USA



The symbol above indicates that this product and/or battery should not be disposed of with household waste. When you decide to dispose of this product and/or its battery, do so in accordance with local environmental laws and guidelines.

Battery Caution & Disposal Information

Please take care of your battery. Do not: disassemble, burn, puncture, crush or bend your battery. Improper operation of the battery may produce smoke. In such an event, ventilate the area. Extinguish any flames with carbon dioxide, dry-chemical fire extinguisher, or cover with sand or mud. Take care to avoid conditions of excessive moisture for prolonged periods and do not immerse. Do not expose to temperatures above 50°C (122°F). Charge battery fully before storage or if stored for longer than three months.

Disposal
 At the end of its life, please take care to dispose of this product responsibly. Electronic products and batteries contain materials that can be harmful to the environment. Please do not dispose to unsorted waste. Take your electronic waste to a designated collection or recycling facility to be recycled properly. Your local council authority will be able to tell you where your nearest facilities are. There may be one at your local supermarket.

Contact Us

If you're unsatisfied with your purchase, please contact us and we'll take care of you! You can contact our US based customer support team:

Website: Jlabaudio.com/contact

Email: support@Jlabaudio.com

Phone U.S.: +1 (405) 445-7219 (M-Th 8am-5pm, F 8am-3pm PT)

Phone U.K.: +44 (20) 3884 3322 (M-Th 1000-0100, F 1000-2300 GMT)

Visit Jlabaudio.com/warranty to initiate a return or exchange.



QUICK START GUIDE

Bluetooth

70+ HOURS PLAYTIME*
 3 NOISE CONTROL - MODES -
 NOISE CANCELING

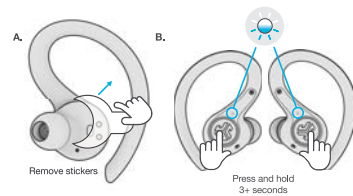


EPIC AIR
SPORT ANC
 TRUE WIRELESS

FIRST TIME SETUP

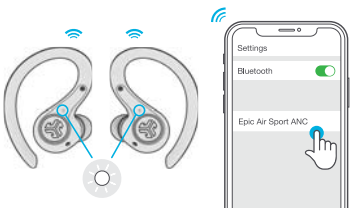
1 AUTO-CONNECTING EARBUDS

- A. Take earbuds out of the charging case and remove stickers.
- B. Press and hold 3+ seconds on each earbud. Blinking blue and white light on one earbud will indicate ready to pair to your device.



2 CONNECTING BLUETOOTH

Select "Epic Air Sport ANC" in your device settings. Voice prompt "Bluetooth connected" followed by solid white lights will indicate you are connected.



ADDING NEW/ADDITIONAL BLUETOOTH DEVICES:
 Turn OFF Bluetooth from any previously connected devices. Turn ON Bluetooth from new device. Take earbuds out of the case. Earbuds will automatically enter Bluetooth Pairing. Select "Epic Air Sport ANC" in new device settings to connect.

CONTROLS



VOLUME DOWN: Single Tap

BE AWARE MODE ON / OFF: Double Tap

NOISE CANCELING LOW / HIGH / OFF: Press and hold 1+ second

EQ CHANGE: Triple Tap

VOLUME UP: Single Tap

PLAY / PAUSE: Double Tap

TRACK FORWARD: Press and hold 1+ second

ANSWER: Single Tap

HANG UP: Double Tap

REJECT INCOMING CALL: Press and hold 2+ seconds

SIRI (IOS) OR "OK GOOGLE" (ANDROID): Triple Tap

MUSIC / MOVIE MODE: Press and hold both touch sensors simultaneously 3+ seconds

POWER OFF WITHOUT CHARGING CASE: Turn off your Bluetooth from your device settings. The earbuds will then power off after 5 minutes.

DOWNLOAD THE APP

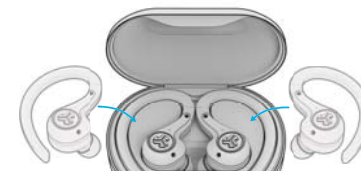
Customize Epic Air Sport ANC features and update the latest software. Download the **JLab Air ANC App** in Apple/Google Play Store



Open your camera and snap the QR code

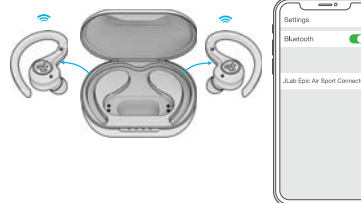
AUTO-POWER ON/OFF

- 1 Placing the earbuds in the charging case will power OFF earbuds and start charging. Blue lights indicate earbuds are charging and will turn OFF when fully charged.



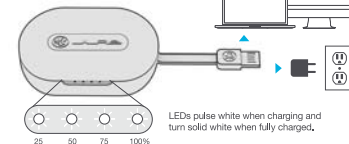
LEFT SIDE CHARGING | RIGHT SIDE CHARGING

- 2 When taken out of the charging case, they will auto power ON and connect.



WIRED CHARGING

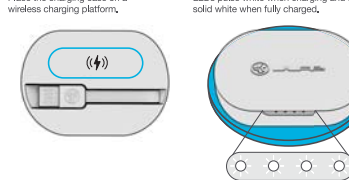
Connect the Epic Air Sport to computer or USB 5v 1A (or less) output device.



LEDs pulse white when charging and turn solid white when fully charged.

WIRELESS CHARGING

Place the charging case on a wireless charging platform.



LEDs pulse white when charging and stay solid white when fully charged.

QUICK TIPS

- The left or right earbud can be used independently for music or phone calls. Simply choose one and take out from the case to connect.
- Only ONE Bluetooth device can be connected at a time. Turn off Bluetooth on unwanted devices and turn on Bluetooth on chosen device to connect.
- Fully dry off earbuds before putting in the charging case to avoid any damage to the case.

For full User Manual and troubleshooting, please visit JLABAUDIO.COM



OFFICIAL AUDIO PARTNER OF MAJOR LEAGUE SOCCER

#FINDYOURGO

QUICK START GUIDE

For full User Manual + other JLab products visit JLABAUDIO.COM