

### FITTING

Try all ear tips for best fit and proper seal.



Place in ear canal and slightly rotate to adjust for best fit.



### VOICE PROMPTS

**"Hello"**: Power ON  
**"Ready to Pair"**: Epic Air Sport ANC is ready to pair to your Bluetooth device  
**"Be Aware"**: Hear your surroundings  
**"ANC Low"**: Noise canceling low  
**"ANC High"**: Noise canceling high  
**"Bluetooth Connected"**: Earbud is connected to device

**"Battery Full"**: 100-75%  
**"Battery Medium"**: 75-50%  
**"Low Battery"**: Less than 25%  
 (When power decreases to 10%, "Low Battery" will stay one time)  
**"Goodbye"**: Power OFF

### EQUALIZER MODES

**JLab SIGNATURE**  
 JLab C3™ signature sound with amplified vocals and bass

**BALANCED**  
 Even sound with no additional sound enhancements

**BASS BOOST**  
 Amplified bass and sub-bass

Customize the EQ settings by downloading the **JLab Air ANC App** in Apple/Google Play Store

### WARNING



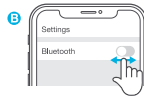
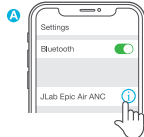
Fully dry off the earbuds before placing in the charging case. If the earbuds are damp or wet, this will cause damage to the charging case. The warranty will be voided if the charging case shows damage by water/sweat.

### TROUBLESHOOTING: No audio in one earbud or earbuds are disconnected (Manual Reset)

- 1 Enter your Bluetooth device settings and forget the JLab Epic Air ANC. Fig. A
- 2 Keep the earbuds in the charging case and on **ONE** earbud quickly tap the touch sensor 7x times. Light blinks blue 3 times. Fig. B
- 3 Repeat with other earbud. Quickly tap the touch sensor 7x times. Light blinks blue 3 times. Fig. C
- 4 Take both earbuds out of the charging case. Wait for one earbud to turn solid white and one to blink blue/white. You are now ready to pair to your Bluetooth device.

### Bluetooth device does not connect/reconnect

- 1 Enter your Bluetooth device settings and forget the JLab Epic Air ANC. Fig. A
- 2 Turn OFF then ON Bluetooth. Fig. B
- 3 Take the earbuds out of the case. Wait for one to turn solid white and one to blink blue/white.
- 4 Select "JLab Epic Air ANC" in devices settings to reconnect.



Instructional videos at: [JLABAUDIO.COM/MANUALS](http://JLABAUDIO.COM/MANUALS)

Quick 7x times

### FREE GIFT

When you register this product [jlabaudio.com/register](http://jlabaudio.com/register)  
 Product updates | How-to tips | FAQs & more

Gift for US only. No PO Boxes or APO/FPO/DPO addresses.

### 3 MONTHS FREE TIDAL

With purchase. Visit [jlabaudio.com/tidal](http://jlabaudio.com/tidal)

Shop products | Product alerts | Burn-in your headphones



JLab Audio - Burn-In Tool



### US Compliance

#### FCC Information

This equipment has been tested and found to comply with the limits for a Class B digital device, pursuant to Part 15 of the FCC Rules. These limits are designed to provide reasonable protection against harmful interference in a residential installation. This equipment generates, uses and can radiate radio frequency energy and, if not installed and used in accordance with the instructions, may cause harmful interference to radio communications. However, there is no guarantee that interference will not occur in a particular installation. If the equipment does cause harmful interference to radio or television reception, which can be determined by turning the equipment off and on, the user is encouraged to try to correct the interference by one or more of the following measures:

- Reorient or relocate the receiving antenna.
- Increase the separation between the equipment and receiver.
- Connect the equipment into an outlet on a circuit different from that to which the receiver is connected.
- Consult the dealer or an experienced radio/TV technician for help.

If you cannot eliminate the interference, the FCC requires that you stop using your product. Changes or modifications not expressly by the party responsible for compliance could void the user's authority to operate the equipment.

This device complies with the 15 of the FCC Rules. Operation is subject to the following two conditions: (1) this device may not cause harmful interference, and (2) this device must accept any interference received, including interference that may cause undesired operation.

FCC ID: 2A974E1ANC

### EU Compliance



FRANCOUBA JLab Audio hereby declares that this device is in compliance with the essential requirements and other relevant provisions of the RED directive.  
 A copy of the EU Declaration of Conformity is available at [jlabaudio.com/compliance](http://jlabaudio.com/compliance)

JLab Audio  
 2281 Lee Palms Drive, Suite 101, Colton, CA 92011, USA



The symbol above indicates that the product and/or battery should not be disposed of with household waste. When you decide to dispose of this product and/or its battery, do so in accordance with local environmental laws and guidelines.

#### Battery Caution & Disposal Information

Please take care of your battery. Do not, disassemble, burn, puncture, crush or bend your battery. Improper operation of the battery may produce smoke in such as smell, venting the case, extinguish any flames with carbon dioxide, dry-chemical fire extinguisher, or cover with sand or mud. Take care to avoid conditions of excessive moisture for prolonged periods and do not immerse. Do not expose to temperatures above 50°C/122°F. Charge battery fully before storage or if stored for longer than three months.

#### Disposal

At the end of its life, please take care to dispose of this product responsibly. Electronic products and batteries contain materials that can be harmful to the environment. Please do not dispose to unsorted waste. Take your electronic waste to a designated collection or recycling facility to be recycled properly. Your local council authority will be able to tell you where your nearest facilities are. There may be one at your local supermarket.

### Contact Us

If you're unsatisfied with your purchase, please contact us and we will take care of you! You can contact our US based customer support team:  
 Website: [jlabaudio.com/contact](http://jlabaudio.com/contact)  
 Email: [support@jlabaudio.com](mailto:support@jlabaudio.com)  
 Phone U.S.: +1 (405) 445-7219 (M-Th 9am-6pm, F 9am-3pm PT)  
 Phone U.K.: +44 (20) 3884 3332 (M-Th 10am-5pm, F 10am-3pm GMT)  
 Visit [jlabaudio.com/warranty](http://jlabaudio.com/warranty) to initiate a return or exchange.

**Bluetooth**

**48+ HOURS PLAYTIME\***

**3 NOISE CONTROL MODES - NOISE CANCELING**

**QUICK START GUIDE**

**EPIC AIR ANC TRUE WIRELESS**

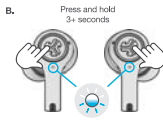
### FIRST TIME SETUP

#### 1 AUTO-CONNECTING EARBUDS

- A. Take earbuds out of the charging case and remove stickers.
- B. Press and hold 3+ seconds on each earbud. Blinking blue and white light on one earbud will indicate ready to pair to your device.



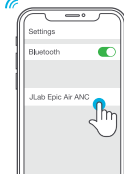
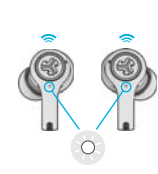
Remove stickers



Press and hold 3+ seconds

#### 2 CONNECTING BLUETOOTH

- Select "JLab Epic Air ANC" in your device settings. Voice prompt "Bluetooth connected" followed by solid white lights will indicate you are connected.



**ADDING NEW/ADDITIONAL BLUETOOTH DEVICES:** Turn OFF Bluetooth from any previously connected device. Turn ON Bluetooth from new device. Take earbuds out of the case. Earbuds will automatically enter Bluetooth Pairing. Select "JLab Epic Air Sport" in new device settings to connect.

### CONTROLS



**VOLUME DOWN:** Single Tap  
**BE AWARE MODE ON / OFF:** Double Tap  
**NOISE CANCELING LOW / HIGH / OFF:** Press and hold 1+ second  
**EQ CHANGE:** Triple Tap

**VOLUME UP:** Single Tap  
**PLAY / PAUSE:** Double Tap  
**TRACK FORWARD:** Press and hold 1+ second  
**ANSWER:** Single Tap  
**HANG UP:** Double Tap  
**REJECT INCOMING CALL:** Press and hold 2+ seconds  
**SIRI (iOS) OR "OK GOOGLE" (ANDROID):** Triple Tap

**MUSIC / MOVIE MODE:** Press and hold both touch sensors simultaneously 3+ seconds

**POWER OFF WITHOUT CHARGING CASE:** Turn off your Bluetooth from your device settings. The earbuds will then power off after 3 minutes.

### DOWNLOAD THE APP

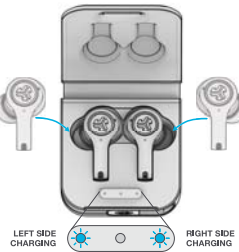
Customize Epic Air Sport ANC features and update the latest software. Download the **JLab Air ANC App** in Apple/Google Play Store



Open your camera and snap the QR code

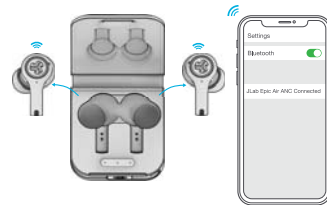
### AUTO-POWER ON/OFF

- Placing the earbuds in the charging case will power OFF earbuds and start charging. Blue lights indicate earbuds are charging and will turn OFF when fully charged.



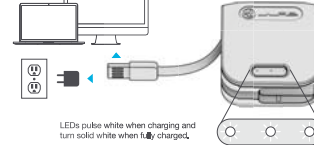
LEFT SIDE CHARGING RIGHT SIDE CHARGING

- When taken out of the charging case, they will auto power ON and connect.



### WIRED CHARGING

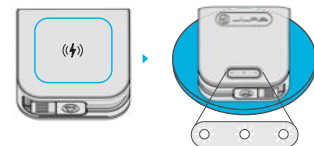
Connect the Epic Air ANC to computer or USB 5v 1A (or less) output device.



LEDs pulse white when charging and turn solid white when fully charged.

### WIRELESS CHARGING

Place the charging case on a wireless charging platform. LEDs pulse white when charging and stay solid white when fully charged.



### QUICK TIPS

- The left or right earbud can be used independently for music on a phone call. Simply choose one and take out from the case to connect.
- Only ONE Bluetooth device can be connected at a time. Turn off Bluetooth on unwanted devices and turn on Bluetooth on chosen device to connect.
- Fully dry off earbuds before putting in the charging case to avoid any damage to the case. For full User Manual and troubleshooting, please visit [JLABAUDIO.COM](http://JLABAUDIO.COM)

Anywhere GO TRUE WIRELESS TRAIN GO POWER GO AD

OFFICIAL AUDIO PARTNER OF MAJOR LEAGUE SOCCER

**#FINDYOURGO**

**QUICK START GUIDE**

For full User Manual + other JLab products visit [JLABAUDIO.COM](http://JLABAUDIO.COM)

GO HIKE GO KID-SO GO MONSTER GO TR