

NÜVISION[®]

TM800W610L Quick Start Guide

Customer Service

NuVision Customer Service
www.nuvision.com/assistance

Phone: (800) 890-1288

Hours: 8:30am to 5:30pm PST M-F

Email: cs@nuvision.com



Register your tablet today at www.nuvision.com

Introduction

Thank you for purchasing the NuVision TM800W610L “Signature Edition” PC Tablet. The device runs on Windows 10, the latest and best operating system yet, utilizing tablet touch technology to make your personal computing and media content experience convenient, productive and immersive. It is the perfect companion for accomplishing everyday tasks, enhancing productivity on the go, playing video games, streaming music and movies, taking photos, checking emails, engaging with social media and so much more.

New features in Windows 10 include Cortana, your voice-activated personal assistant who can search the web, find files for you, keep track of your personal calendar, and tell you today’s weather. Microsoft Edge is the new replacement browser for Internet Explorer, that is faster and more convenient to use. Other features include Bluetooth connectivity, front & rear cameras, and a memory card slot for up to an additional 64GB of storage. With a sleek design and bright high-definition IPS touch screen that ensures ultra wide viewing angles, you’ll enjoy the TM800W610L for many years to come.

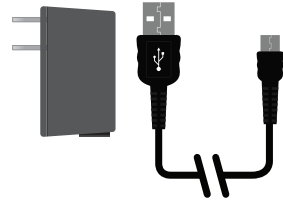
The following information will help you get the most out of your tablet. We strongly recommend reading it thoroughly before first use, and go to our website to register your tablet. For more information, check out the on-line user manual at www.nuvision.com

Features & Package Contents

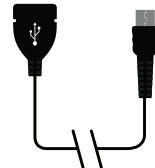
TM800W610L Tablet

- 8" 1920 x 1200 IPS HD Touch Screen Tablet
- Intel® Atom™ Processor
- AC Wall Adapter
- Windows 10 Operating System
- 32GB Internal Storage; 2GB RAM
- 2.0MP Front and 5.0MP Rear Camera
- Bluetooth/ WiFi 802.11b/g/n
- Dual Microphones
- HD Video Output
- Micro USB Port
- TF Memory Card Slot
(Up to 64GB Additional Storage)
- Cortana - Personal Assistant

AC Adapter



Transfer Cable



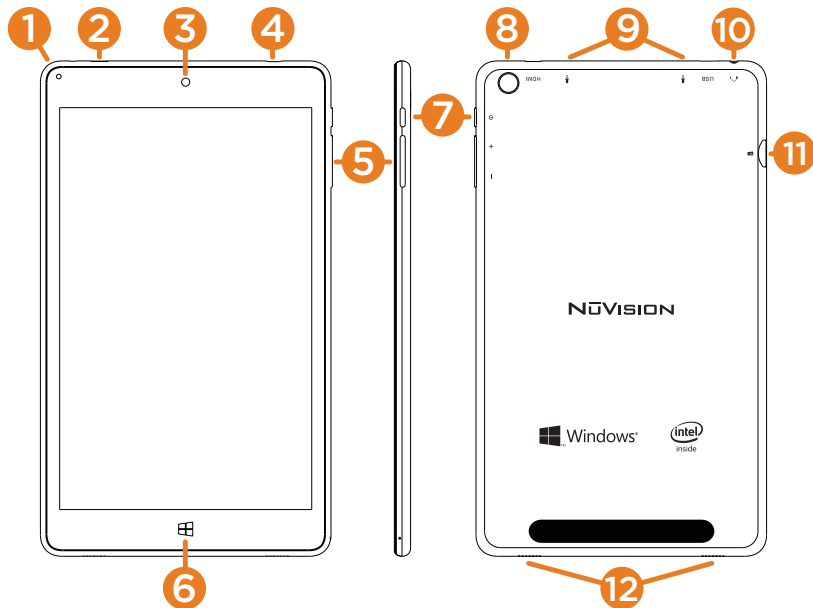
Important Safety Instructions


This device complies with part 15 of the FCC rules. Operation is subject to the following two conditions: (1) this device may not cause harmful interference, and (2) this device must accept any interference received, including interference that may cause undesired operation.

Please read the following instructions and notices before using your tablet.

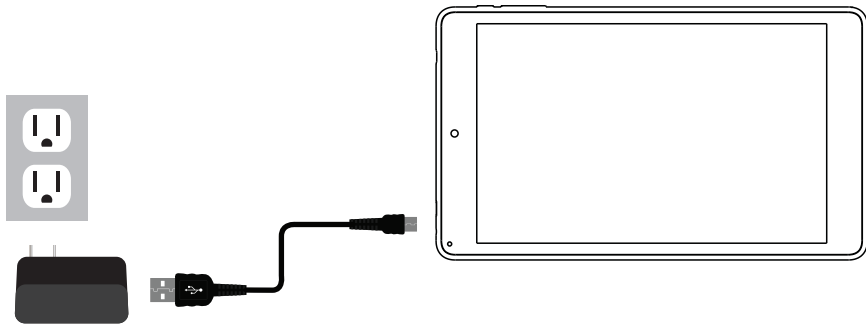
1. Avoid using in extremely hot, cold, dusty, damp or wet environments.
2. The tablet is not moisture or water-resistant. Avoid using the tablet around sources of water.
3. Avoid dropping or forcibly placing the tablet onto a hard surface. This may damage the screen or internal electronic components and void the warranty.
4. Do not use alcohol, thinner or benzene to clean the surface of the tablet. Use only cleaning products designed for computer tablet devices.
5. Do not use the tablet while walking or driving.
6. Excessive use of earphones at high volume may lead to hearing impairment. Limit earphone usage, and adjust the volume to a moderate level only.
7. The images in this manual may vary slightly from the actual product.
8. Charge the tablet battery under any of the following circumstances:
 - a. Battery level icon indicates low power
 - b. Tablet powers-off automatically, continuing to do so even after restarting.
 - c. On-screen keys or display does not function properly.
9. Do not suddenly disconnect the tablet when formatting, uploading or downloading data. This may lead to program errors (e.g., system or screen “freezing”.)
10. Static discharge is normal and can occur in an electronic device. Although not life threatening, it may corrupt files or damage memory and its content. Do not use accessories that are not from Nuvision.
11. Dismantling the tablet will void the manufacturer’s warranty. If you are experiencing problems, review this quick start guide or visit the FAQ online at www.nuvision.com.
12. Tablet functions, hardware, software, and warranty information may be revised by the manufacturer or their respective owners, and subject to change without notice.
13. Warning: This product may contain a chemical known to the State of California to cause cancer, birth defects, or other reproductive harm.

Tablet Overview



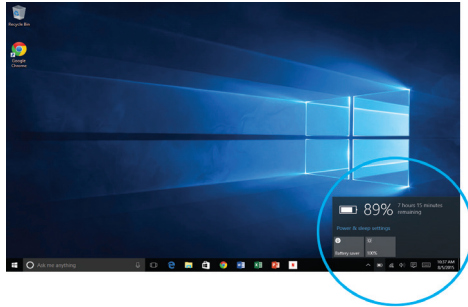
1. **DC Indicator:** Illuminates when unit is charging.
2. **Micro USB Power Port:** Connect to power supply to recharge tablet; connect an external flash drive or other compatible device.
3. **Front Camera:** Built in 2.0MP front camera to take HD photos or videos.
4. **HDMI:** Connect to view HD quality images on your HDTV or projector.
5. **Volume - / Volume +:** Decrease or increase volume level for speakers or headphones.
6.  **Window:** Press to return to Home/Start Menu.
7. **Power:** Press and hold for 3 seconds to turn on the tablet. Press momentarily to enter Sleep mode. This will turn off display and save battery life. Press and hold to turn off.
8. **Rear Camera:** Built in 5.0MP rear camera to take HD photos or videos.
9. **Microphones:** Built-in dual microphones to speak to Cortana, or for personal voice recording.
10. **Headphone:** Insert headphones for private listening or connect with amplified speakers.
11. **Micro TF Memory Card Slot:** The built-in storage card reader slot supports an optional TF memory card for additional storage.
12. **Speaker:** Built in audio speakers to listen to music, pod casts, etc., without headphones.

Charging the Battery



Connect the power adapter to a wall outlet, then to the tablet's micro USB port as shown. It is recommended to fully charge the battery before first use. A battery status indicator appears in the lower right corner of the Task Bar. Tap to view the current battery level, time remaining, brightness control, and settings for power and sleep modes.

It is normal for the tablet to become warmer while charging, streaming video, or multi-tasking. Battery life between charges will vary depending on display brightness, apps that remain open, and most importantly, your internet use. For example, streaming movies from the internet will consume more battery resources than most other applications.




Battery Care

Operating temperature: Your device is designed to function between 32°F and 95°F (or 0°C to 35°C). Lithium-ion batteries are sensitive to higher temperatures so keep away from direct sun light. Don't leave in a closed environment susceptible to extreme temperatures (ie: a vehicle on a hot sunny day).

Recharge anytime: You can recharge the internal battery at any time. However, we recommend discharging the battery down to 10% or lower at least once each month before recharging.

Starting your Tablet

Power On/Off/Standby Mode/Reset

ON: Press and hold the side POWER  button on the side for a couple of seconds until the logo screen appears, then release.

OFF: Press and hold the side POWER  button on the side of the tablet.

When prompted, slide finger downward to shut down your PC.

STANDBY MODE: While the tablet is on, press the side Power button quickly to turn off the display only. The tablet will enter Sleep mode to minimize battery functions. Press the Power button quickly to wake from Sleep mode.

NOTE: To avoid excessive battery drainage, turn the tablet off completely.

First time Setup Wizard

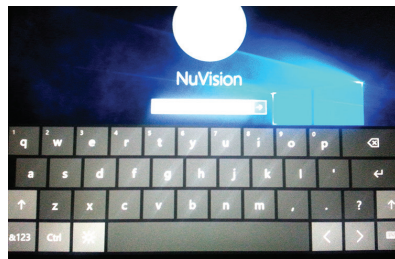
The first time you turn on the device, a Setup Wizard will guide you through a number of steps before use to choose a language, personalize your tablet, set up WiFi, etc.

User and Password Setup

To set up passwords, enter the Action Center window by swiping inward from the right edge of display. Open “All Settings” > “Accounts” > Sign In Options to add Passwords.

NOTE: Password policy settings may not be available if you’ve added a work email account to the Mail app.

Lock Screen and Password



The Lock Screen is the starting point when the tablet is turned ON. Swipe your finger upward from the bottom of the display to exit the Lock Screen, then enter your Password.

NOTE: To reset your Password, go to ACCOUNT.LIVE.COM/PASSWORD/RESET

Start Menu / Tablet Task Bar Overview



The Start Menu screen consists of colorful static and live tiles that provide quick access to built-in apps, mail, entertainment, and the latest in news, weather, and sports. You can reposition tiles to other areas of the screen, resize them, or pin them to the Desktop Task Bar. To do so, press and hold a tile for one second to display available options.

1. **Power:** Restart > Shutdown > Sleep.
2. **App Menu:** View all apps arranged alphabetically.
3. **Start Menu :** View colorful static and live tiles. Drag along the edges to resize
4. **Back:** Go back to the previous page.
5. **Search :** Search Windows or the internet.
6. **Task View:** View all open apps at one time.
7. **Battery Level:** View percentage of battery level and the time remaining; adjust power-saving and display settings.
8. **WiFi:** View network settings or activate Airplane mode.
9. **Volume:** Adjust volume level.
10. **Action Center:** View alerts, notifications, and tablet settings.
11. **Keyboard:** While in Desktop Mode, tap or click to use the virtual keyboard.
12. **Date & Time:** Adjust settings.

Common Finger Gestures

Swipe from the edges:

Swipe right from the left edge to access open apps.

Swipe left from the right edge to open the Action Center.



Pinch to Zoom in/out: Some apps (such as Maps, Browser, and Gallery) allow you to zoom in and out by placing two fingers on the screen at once. Spread fingers apart to zoom in or pinch together to zoom out.




Swipe downward from the top edge to reduce the size of an active window. Move it to one area then open a second app to view both windows side by side.



Swipe finger side to side and up and down to move images.

Apps Menu



To display the convenient and easy to use Apps menu, tap or click the  All Apps button in the Start Menu. Launch apps, features and programs that are set up alphabetically. Slide your finger or scroll up and down to view all apps on your tablet.

Add / Remove / Resize Apps

You can reconfigure the tiles within the Start Menu quite easily. To create, or pin a tile from an app located in the App Menu, select and drag your selection to place the tile in a preferred location. To change the tile size or to remove (unpin) it, tap or click and hold for one second to display available options.